

### ATD-3039 LATE MODEL HARMONIC DAMPENER PULLER AND HOLDING TOOL SET



#### Includes:

- 3-jaw puller with a 3/4" hex for wrench or socket use
- (4) lengths of forcing rods
- Forcing screw with 3/8" square drive for ratchet use
- Chrysler harmonic balancer holding tool

### ATD-3041 HARMONIC BALANCER PULLER

#### Features:

- Heavy-duty flange-type puller
- Quickly and easily pulls harmonic balancers, timing gears and other parts with bolt circle diameters from 1-1/2" to 4-5/8"
- Works on most automobiles large and small, foreign and domestic
- Will pull parts with tapped holes like flywheels, gears and pulleys



### ATD-3044 5-TON, 2- OR 3-JAW REVERSIBLE PULLER

#### Features:

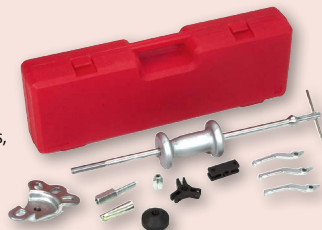
- Ideal for pulling smaller gears, bearings, pulleys and other press fit parts
- Jaws are reversible to make (4) other pullers
- 8-way, 2- or 3-jaw reversible pullers
- Max Reach: 5-1/2"
- Max Spread: 7"
- Max Screw Size: 9/16"-20 x 6-15/16"



### ATD-3045 SLIDE HAMMER PULLER SET

#### Features:

- Eases removal of flange-type axles, oil seals, bearings and other press fit parts
- Jaws can be set up for 2- or 3-jaw internal or external pulling jobs
- 5 lbs. heavy-duty slide hammer
- 8-function internal or external 3-jaw puller - Range: 1-1/4" to 3-1/8"
- Internal or external 2-jaw puller - Range: 1-1/4" to 3-1/8"
- Puller hook, rear axle puller
- Dent puller



PLACE  
STAMP  
HERE



[www.atdtools.com](http://www.atdtools.com)

©2025 ATD Tools, Inc. All rights reserved. Trademarks of companies mentioned herein appear for identification purposes only and are the property of their respective companies. Rev. 03.05.25



# PULLERS

## ATD-3046 PITMAN ARM PULLER

### Features:

- For the mechanic who prefers the safe and steady pull of a screw-type puller
- Eliminates the necessity of having several different tools for Pitman arms
- Heavy-duty center screw and heat-treated yoke drop forged from high-grade alloy steel
- Heavy-duty yoke eliminates spreading and breakage
- Maximum width - 2.5"



## ATD-3047 5-TON STRAIGH PULLER

### Features:

- More convenient than standard pullers
- Versatile and easy to use
- Puller arms slide back and forth on yoke to adjust to many sizes
- 5" maximum reach
- Includes: 9" bar and (3) pairs of puller arms



## ATD-3048 10-TON STRAIGHT PULLER

### Features:

- More convenient than standard pullers
- Versatile and easy to use
- Puller arms slide back and forth on yoke to adjust to many sizes
- 8" maximum reach
- Includes: 10" bar and (4) pairs of puller arms



## ATD-3052 PULLEY PULLER AND INSTALLER

### Features:

- Removes pressed-on alternator and power steering pulleys on late-model GM, Ford and Chrysler engines
- The threaded end installs late model GM alternator and power steering pulleys, including Quad 4
- Reverse the jaws to pull the alternator internal bearing
- This puller fits some AMC vehicles
- Will not work on 3.3L and 3.5L Chrysler engines
- Molded storage case included



## ATD-3053 REAR AXLE PULLER SET

### Features:

- Slide Screw: 5/8"-18T x 22-1/2"
- Axle Yoke
- (3) Bearing Adapters
- 3-3/4 lbs. Slide Hammer
- 5/8" Lock Nut
- Bearing Hook
- Molded storage case included



## ATD-3056 5-TON BAR-TYPE PULLER/BEARING SEPARATOR SET

### Features:

- Perfect set for a wide variety of pulling jobs
- Can be used separately or with other pullers or tools
- Drop forged and heat treated
- Includes: 2" and 3" bearing separators, 5" puller cross bar with 6-1/4" forcing screw, (4) sets hex push-puller legs, Molded storage and carrying case



## ATD-3059 DELUXE STEERING WHEEL REMOVER AND STEERING COLUMN SERVICE TOOL SET

### Includes:

- Puller and (4) sets of cap screws for various steering wheel threads
- Special puller legs and collar for use on steering wheels without threads
- Steering wheel lock plate compressor to remove and install snap rings - a must for accessing turn signal switches



## ATD-3630 A/C CLUTCH HUB PULLER/INSTALLER KIT

### Includes:

- Contains compressor clutch hub pullers and installers for GM, Ford, Chrysler and imports
- Compressor ID chart is included



## ATD-5160 MUSCLE MAX 10 LBS. HEAVY-DUTY DENT PULLER SET

### Includes:

- 10 lbs. slide hammer
- Hex nut
- Molded storage case
- (2) Pipes
- Chain and hook
- 7/8" x 14 thread pitch for accessories
- 2-hole pipe
- (5) Plates
- 26.75" long

## ATD-3057 FLANGE TYPE AXLE & FRONT WHEEL HUB PULLER

### Features:

- For use on domestic and import cars and light trucks
- Range is 3-3/4" to 4-1/2"
- For use on four, five, or six bolt stud design and all non-C lock GM axles
- Can be used with ATD-3045, heavy-duty puller set



## ATD-3058 HUB PULLER

### Features:

- Tool will remove wheel hubs mounted on tapered axles and press fit rear brake drums
- Can be adjusted by legs from 2.5" to an 8" diameter bolt circle
- Made of alloy steel and drop forged, this heavy-duty tool has a center screw 1"-14 x 9" with a 1-1/8" hex head



## ATD-3075 RATCHETING HARMONIC BALANCER PULLER

### Features:

- Eliminates the need to remove major engine components
- Ratcheting function holds jaws in place during the application
- Ratcheting yoke has a 7-Ton pulling capacity



## ATD-7541 HEAVY-DUTY DENT PULLER

### Features:

- Heavy-duty dent puller/slide hammer with vinyl cushion finger grip handle
- Puller comes with extra screw and hook for pulling bearings and seals
- Shaft 12mm x 1.75 thread
- 1.75 lbs. slide hammer



## ATD-91700 PILOT BEARING PULLER WITH SLIDE HAMMER

### Features:

- Removes bearings or bushings on flywheel, pump, generator, etc.
- Includes 1/2-in to 1-3/8-in ID capacity jaws
- Includes 3 lbs. Slide Hammer

