



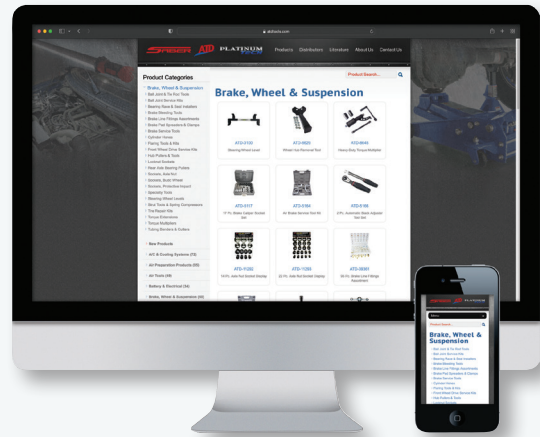
# BRAKE, WHEEL & SUSPENSION



Since 1977, ATD Tools, Inc. has focused on providing professional automotive tools and equipment at competitive prices. After over forty years, we are still committed to providing the quality tools you need at a price you can afford.

Our tools and equipment are quality control tested at the manufacturer, by independent labs and in the field to ensure they meet the performance and durability professional mechanics demand today and will continue to demand for years to come.

Ball Joint Tools.....	4
Brake Tools .....	5
Flaring Tools & Kits.....	6
Hub Pullers & Tools .....	7
Sockets .....	7-9
Strut Tools & Spring Compressors.....	9
Tire Repair Kits.....	10
Torque Extensions.....	10
Torque Multiplier .....	10
Tube Benders & Cutters .....	11



Visit us online at [www.atdtools.com](http://www.atdtools.com) to view the full line of products available.

A pdf version of this catalog along with other informational pdf files are available online under the "Literature" tab.





## ATD-3053 REAR AXLE PULLER SET

### Features:

- Slide hammer power pulls many flange-type rear axles and axle bearings

### Set Contains:

- (1) Slide Screw: 5/8" - 18T x 22-1/2"
- (1) 5/8" Lock Nut
- (1) Axle Yoke
- (1) Bearing Hook
- (3) Bearing Adapters
- Molded storage case included
- (1) 3-3/4 lbs. Slide Hammer



## ATD-3100 STEERING WHEEL LEVEL

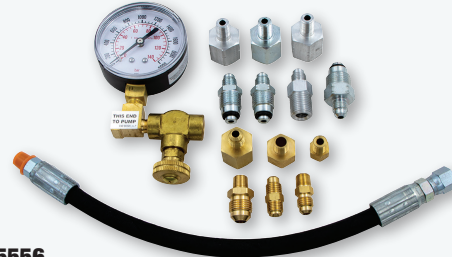
### Features:

- Used to level the steering wheel during front-end alignment procedures
- Ideal for use with four-wheel laser aligners
- Self-retaining and centering using a spring-loaded mechanism
- Built-in level bubble shows horizontal position
- Suitable for steering wheels with an internal diameter between 10.5" (270mm) and 13.4" (340mm)

## ATD-5010 ADJUSTABLE BRAKE CYLINDER HONE

### Features:

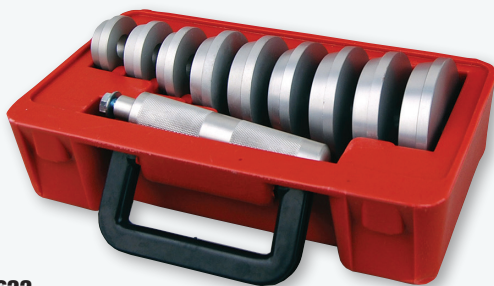
- Professional full-range hone covers sizes from 3/4" to 2-1/2" (19mm-64mm)
- Knurled nut controls tension for honing and deglazing throughout full range
- Hones clear to the end in step-cut and blind end cylinders
- Flexible shaft for easy use right on the car
- Includes (3) 1-1/8" medium grit stones
- Shipping Weight: 0.3 lbs.



## ATD-5556 POWER STEERING AND RACK TESTER

### Features:

- Handy diagnostic tool for rack problems takes the guesswork out of power steering analysis quickly and accurately, by detecting defective power steering pumps and gears and kinked or clogged lines
- Quickly points out if trouble is in front suspension or steering linkage
- Includes most adapters needed to test domestic cars and light trucks and some imports
- Dual 2-1/2" easy-to-read gauge records pressure from 0-2,000 psi and 0-140 BAR
- Shipping Weight: 3.0 lbs.



## ATD-8622 10-PC. BEARING RACE AND SEAL DRIVER SET

### Features:

- Makes it easier to install bearing races and seals without damage to race, axle housing or brake rotors
- Machined aluminum construction

### Includes driver handle and (9) adapter sizes:

- 1.565" • 2.325" • 2.830"
- 1.750" • 2.470" • 2.995"
- 1.965" • 2.555" • 3.180"

## ATD-8625 FRONT WHEEL DRIVE BEARING ADAPTER KIT

### Features:

- These front wheel bearing adapters replace wheel bearings while keeping the steering knuckle and strut assembly intact on the vehicle, eliminating the need for front end alignment once the work is done.
- For front wheel drive cars and light trucks
- Black oxide finish
- Packed in a custom case for easy transport and storage
- Shipping Weight: 24.60 lbs.

### Kit Includes:

- (13) Bushings
- (4) Sleeves
- (2) Sleeve Plates
- Sliding Screw, Nut and Washers



# BALL JOINT TOOLS

## ATD-8695 XL C-FRAME BALL JOINT PRESS

### Features:

- Extra-large ball joint press for maximum clearance
- Facilitates easier use of tall and stacked adapter plates
- Will work with ATD and other ball joint removal and installation adapters
- Kit includes both long and short drive screws for shorter overall working length when desired
- Includes a notched foot to allow pressing out of ball joints without removal of top-mounted grease fittings
- 9.1" throat, 11.9" length

### Contents:

- (1) C-clamp
- (1) removal adapter
- (1) install adapter
- (1) each long and short drive screw



## ATD-8697 ADD-ON BALL JOINT ADAPTER SET

### Features:

- Expands the serviceability of your deluxe ball joint service set (ATD-8696)
- Includes all the receiver tubes and removing/installing adapters needed to work on most 2WD and 4WD pickups, vans and SUVs thru 2006
- Application chart included
- Works on press-fit upper and lower ball joints
- Molded storage case included



## ATD-8696 DELUXE BALL JOINT SERVICE SET

### Features:

- Heavy-duty tool set is excellent for removal and installation of press-fit parts such as ball joints, universal joints and truck brake anchor pins
- Will remove rusted and corroded parts

### Contents:

- C-frame press
- (3) receiver tubes in sizes: 2-3/4" x 3", 2-1/4" x 2-1/2" and 1-3/4" x 2"
- Installation and removing adapters for 1967 through current 1/2- and 3/4-Ton 4WD vehicles having the Dana 44 front axle (found on Ford, GM, Dodge, IHC and Jeep vehicles)
- Molded storage case included



## ATD-8699 21-PC. MASTER BALL JOINT SERVICE SET

### Features:

- Heavy-duty tool removes and installs ball joints, U-joints and truck brake anchor pins
- The set includes all of the receiver tubes and adapters needed to work on press-fit upper and lower ball joints on most 2WD and 4WD pickups, vans and SUVs through 2006
- Live center forcing screw plug
- Heavy-duty steel and cast metal construction for years of service
- Molded storage case included



## ATD-8700 BALL JOINT SEPARATOR

### Features:

- Separates ball joints from steering knuckles
- Forged steel
- Opening: 15/16"
- Length: 12"

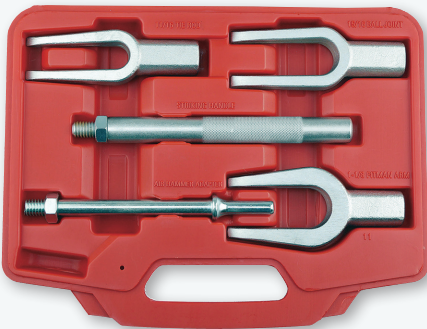
## ATD-8705 5-PC. BALL JOINT & TIE ROD SEPARATOR SET

### Features:

- Made of heavy-duty drop forged chrome vanadium steel

### Set Includes:

- (3) Forks in sizes: 11/16", 15/16" and 1-1/8"
- (1) Handle for use with manual hammer
- (1) Handle for use with air hammer



## ATD-8701 TIE ROD SEPARATOR

### Features:

- Separates tie rods, drag links, etc.
- Forged steel
- Opening: 5/8"
- Length: 16"

## ATD-5147 7-PC. DRUM BRAKE TOOL SET

### Features:

- 5/16" (3/4" diameter) Brake Spring Tool
- 9-3/4" Brake Spring Tool
- 8-1/2" Brake Bleeder Wrench (5/16" and 3/8" hex box)
- 9" Brake Bleeder Wrench (1/4" and 3/8" hex box)
- 90° 5-1/8" Brake Bleeder Wrench (8mm and 10mm)
- 8-3/16" Brake Adjustment Tool (29° and 45°)
- 8-1/4" Brake Adjustment Tool (29° and 45°)
- For servicing most foreign and domestic brakes



## ATD-5166 2-PC. AUTOMATIC SLACK ADJUSTER TOOL SET

### Features:

- Specifically designed for installation and servicing of Meritor air brake systems
- 5/16" double-square head reversible wrench with built-in ratcheting mechanism is offset to provide increased clearance
- Fork-end tool fits securely under the tensioner release button, allowing hands-free operation without prying or damaging it
- Ergonomic slip resistant molded handles



## ATD-5163 2-IN-1 S-CAM BRAKE TOOL

### Set Contains:

2-in-1 S-Cam Brake Tool, offers technicians a more efficient method for changing brake shoes on an S-Cam drum brake assembly. The tool is comprised of a steel shaft with a U-shaped fork on one end to stretch the retaining spring so that both halves of the brake shoe are held together, which enables the user to hook up the pin. An S-shaped device on the opposite end enables the user to position the brake shoes in a way that allows leverage for installation of the rollers. The hooked end pulls the brake shoes apart so that the rollers can be installed faster and more safely.

## ATD-5165 18-PC. DISC BRAKE CALIPER TOOL SET

### Features:

- For use on most domestic and import 2WD & 4WD vehicles
- Use on front or rear brakes
- Includes tools and adapters for both right- and left-handed applications
- Use on main brake and parking brake systems
- Prevents damage to brake piston and boot



## ATD-5164 AIR BRAKE SERVICE TOOL KIT

### Features:

- Removal tools for slack adjusters and push-rod clevis pins used on brake systems of class 7 and 8 vehicles
- Works on manual and automatic slack adjusters
- Includes 2 slack adjuster pullers and a brake clevis pin press



## ATD-5117 17-PC. BRAKE CALIPER SOCKET SET

### Features:

- Complete coverage for most foreign and domestic brake caliper applications
- Includes specialty brake caliper bits and sockets in one set



### Set Contains:

- 1/4" Drive Bit:**
- ATD-51177 - H9 x 20mm Stubby Bit Socket

### 3/8" Drive Bits:

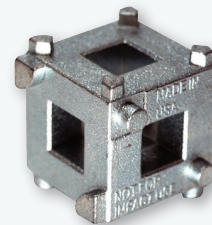
- ATD-51184 - H11 x 100mm Bit Socket
- ATD-51186 - H7 x 92mm Bit Socket
- ATD-51185 - H7 x 65mm Bit Socket
- ATD-51183 - H9 x 50mm Bit Socket
- ATD-51175 - H7 x 24mm Stubby Bit Socket
- ATD-51176 - H8 x 24mm Stubby Bit Socket

### 1/2" Drive Bit:

- ATD-51174 - 10mm Pentagon Bit Socket

### 1/2" Drive Sockets:

- ATD-51181 - 7 Point Caliper Socket
- ATD-51179 - 10 Point 11.5mm Caliper Socket
- ATD-51180 - 10 Point 15mm Caliper Socket
- ATD-51178 - 10 Point 20mm Caliper Socket
- ATD-51182 - AS22 x 48mm Brake Socket
- ATD-51170 - 10mm Pentagon Caliper Socket
- ATD-51171 - 12.5mm Pentagon Caliper Socket
- ATD-51172 - 14mm Pentagon Caliper Socket
- ATD-51173 - 19mm Pentagon Caliper Socket



## ATD-5060 DISC BRAKE PISTON TOOL

### Features:

- Designed to rotate the parking brake activated piston back into the caliper cylinder when replacing worn pads on vehicles equipped with (4) wheel disc brakes
- Will function on most import, Ford, Chrysler and some GM models
- Shipping Weight: 0.2 lbs.

## ATD-5125 BRAKE BLEEDER TANK

### Features:

- 4 qt. capacity
- 3/8" I.D. x 10-1/2 ft. hose
- 2100 Series Quick disconnect coupler
- Shut-off valve and pressure gauge
- Portable tank fills and bleeds both standard and power brakes in a single operation
- Pressurized with built-in hand pump
- Suitable for DOT 3 and DOT 4 brake fluids only



# BRAKE TOOLS • FLARING TOOLS & KITS

## ATD-7414A BRAKE DRUM HANDLER

### Features:

- Ideal for removing and installing truck brake drums
- Detachable handle for convenient storage

### Specifications:

- Capacity: 750 lbs.
- Drum Size Range: 15" - 16-1/2"
- Overall: 61-7/16" x 22-1/4" x 20-1/2"
- Low Lift Height: 10-1/4"
- High Lift Height: 15-1/4"
- Wheel Diameter: 7-3/4"



## ATD-5463 DOUBLE FLARING TOOL KIT

### Features:

- Chrome swivel, made of alloy steel reduces friction
- Forged yoke made of heat-treated steel
- Designed for double or single flare in copper, aluminum, soft steel brake line and brass tubing (to 45°)
- Molded storage case included
- Shipping Weight: 2.5 lbs.
- Adapters available individually

### Included Adapters:

- PRT5463-01 - 3/16" adapter
- PRT5463-02 - 1/4" adapter
- PRT5463-03 - 5/16" adapter
- PRT5463-04 - 3/8" adapter
- PRT5463-05 - 1/2" adapter



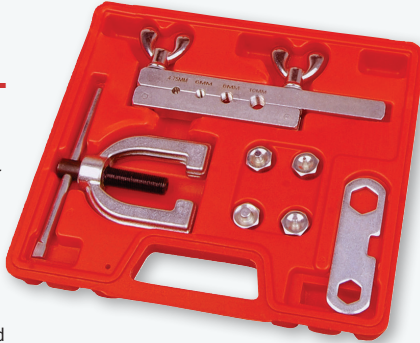
## ATD-5464 BUBBLE (ISO) FLARING TOOL KIT

### Features:

- Forged steel yoke, flaring bar and all the adapters needed for ISO bubble flaring
- Designed for crack-free bubble flares on soft steel tubing used in automotive brake systems
- Molded storage case included
- Shipping Weight: 2.6 lbs.
- Adapters available individually

### Included Adapters:

- PRT5464-01 - 4.75mm adapter
- PRT5464-03 - 8mm adapter
- PRT5464-02 - 6mm adapter
- PRT5464-04 - 10mm adapter



## ATD-5478 MASTER FLARING AND TUBING TOOL SET

### Features:

- Includes cutting, bending and flaring tools designed for use on steel brake, transmission & fuel lines and copper, aluminum & brass tubing
- Makes SAE 45° double & single flares in 3/16", 1/4", 5/16", 3/8" and 1/2" tubes
- Makes ISO bubble flares in 4.75mm, 6mm, 8mm and 10mm tubes found on many European, Asian and some domestic vehicles
- Roller-style tubing bender makes tight bends without collapsing the tube
- Mini tubing cutter for 1/8" to 5/8" diameter tubes allows use in tight areas

### Set Includes:

- Universal Flaring Tool Yoke
- SAE Flaring Tool Bar Assembly
- (5) SAE Flaring Tool Adapters: 3/16", 1/4", 5/16", 3/8", 1/2"
- Metric Flaring Tool Bar Assembly
- (4) ISO Bubble Flaring Tool Adapters: 4.75mm, 6mm, 8mm, 10mm
- Tubing Bender with (2) Adapter Wheels
- Mini Tubing Cutter
- Adapter Wrench



## ATD-5483 MASTER IN-LINE FLARING TOOL KIT

### Features:

- Unique design locks the adapters, cone and tube in a perfect line with less risk of breaking adapters.
- The clamp and set screws put pressure directly over the tube reducing the chance of the tube slipping from the clamp. This increases the overall life of the clamp by not wearing down the teeth inside from repeated slipping.
- The slender, low-profile design of this tool allows the user to make flares on the vehicle and in tight spaces. Flares can be achieved along frame rails or areas in the engine compartment, saving the user time from having to remove components or complete lines to make repairs.
- Set includes everything needed to do the following: 3/16", 1/4", 5/16 and 3/8" double and single flares; 4.75mm 6mm and 8mm double, bubble and single flares. Kit produces 45 degree angle flares



## IN-LINE FLARING TOOL

This in-line flaring tool is designed specifically for 3/16" automotive brake lines, and enables the user to flare copper or soft steel tubing in tight spaces with its low profile design. The design also enables the technician to use a ratchet or wrench. This new patented flaring tool design makes perfect single or double flares easily. The double clamp and hex body keeps tube from slipping, keeps flares centered, and makes the job of flaring easier.

### Features:

- Low profile design allows for use on or off the vehicle
- Designed to be used with a ratchet to make flares easier
- In-line design makes a more accurate flare
- Double clamp and hex screw design keeps tubing locked tightly in position
- For use on thin walled steel and copper tubing
- Superior to bar-type flaring tools
- Patent Pending

### Available Configurations:

- ATD-5480 - In-Line Flaring Tool - Auto-Specific Set
- ATD-5481 - In-Line Flaring Tool - SAE
- ATD-5482 - In-Line Flaring Tool - Metric



## ATD-3057 FLANGE TYPE AXLE & FRONT WHEEL HUB PULLER

### Includes:

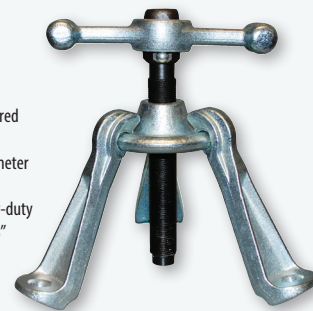
- For use on domestic and import cars and light trucks
- Range is 3-3/4" to 4-1/2"
- For use on four, five, or six bolt stud design and all non-C lock GM axles
- Can be used with ATD-3045, heavy-duty puller set



## ATD-3058 HUB PULLER

### Includes:

- Tool will remove wheel hubs mounted on tapered axles and press fit rear brake drums
- Can be adjusted by legs from 2.5" to an 8" diameter bolt circle
- Made of alloy steel and drop forged, this heavy-duty tool has a center screw 1"-14 x 9" with a 1-1/8" hex head



## ATD-8641 HUB TOOL

### For Ford and Dodge 4WD pickups:

- Removes Ford and Dodge 4WD pickup wheel hubs without damage to the wheel bearings
- Heavy-duty steel



## ATD-8629 WHEEL HUB REMOVAL TOOL

### Features:

- Safely removes frozen hub assemblies instantly
- Will not damage axles
- Universal mount fits all axle bolted hubs (5, 6 and 8 lug hubs)
- 2-5/8" center to center hole pattern
- Mounts to (2) studs using supplied flange nuts
- Use with 5 lbs. hammer to knock frozen hubs out of axles
- 3/4" steel backing plate and reinforced striking plate for long life

### Flanged Nuts Included (2ea):

- 12mm-1.50 • 1/2"-20
- 14mm-1.50 • 9/16"-18
- 7/16"-20 • 5/8"-18



## ATD-11292 14-PC. AXLE NUT SOCKET DISPLAY

### Features:

- 3/4" square drive opening to be used with a hand ratchet or torque wrench
- Constructed with high-grade steel and feature a heavy-duty welded drive bar for added strength
- Black E-coating for long lasting corrosion protection
- Manufactured to strict quality standards for an exact fit and precise operation
- Display Measures 18.25" x 20" x 5"
- Available Individually

### Display Includes:

- ATD-11208 - 3-1/4", 6 pt Axle Nut Socket
- ATD-11209 - 3-1/4", 8 pt Axle Nut Socket
- ATD-11210 - 3-1/2", 6 pt Axle Nut Socket
- ATD-11214 - 4", 6 pt Axle Nut Socket
- ATD-11215 - 4-1/8", 6 pt Axle Nut Socket
- ATD-11217 - 4-3/8", 8 pt Axle Nut Socket
- ATD-11219 - 4-7/8", 8 pt Axle Nut Socket
- ATD-11220 - 2-1/4", 6 pt Axle Nut Socket
- ATD-11221 - 2-1/2", 6 pt Axle Nut Socket
- ATD-11222 - 2-5/8", 6 pt Axle Nut Socket
- ATD-11223 - 2-3/4", 6 pt Axle Nut Socket
- ATD-11225 - 3-3/4", 8 pt Axle Nut Socket
- ATD-11227 - 3-13/16", 8 pt Axle Nut Socket
- ATD-11241 - 4-13/16", 8 pt Axle Nut Socket



## ATD-11293 22-PC. AXLE NUT SOCKET DISPLAY

### Features:

- 3/4" square drive opening to be used with a hand ratchet or torque wrench
- Constructed with high-grade steel and] feature a heavy-duty welded drive bar for added strength
- Black E-coating for long lasting corrosion protection
- Manufactured to strict quality standards for an exact fit and precise operation
- Display Measures 22.25" x 25.5" x 5"
- Available Individually

### Display Includes:

- ATD-11208 - 3-1/4", 6 pt Axle Nut Socket
- ATD-11209 - 3-1/4", 8 pt Axle Nut Socket
- ATD-11210 - 3-1/2", 6 pt Axle Nut Socket
- ATD-11214 - 4", 6 pt Axle Nut Socket
- ATD-11215 - 4-1/8", 6 pt Axle Nut Socket
- ATD-11217 - 4-3/8", 8 pt Axle Nut Socket
- ATD-11219 - 4-7/8", 8 pt Axle Nut Socket
- ATD-11220 - 2-1/4", 6 pt Axle Nut Socket
- ATD-11221 - 2-1/2", 6 pt Axle Nut Socket
- ATD-11222 - 2-5/8", 6 pt Axle Nut Socket
- ATD-11223 - 2-3/4", 6 pt Axle Nut Socket
- ATD-11225 - 3-3/4", 8 pt Axle Nut Socket
- ATD-11227 - 3-13/16", 8 pt Axle Nut Socket
- ATD-11241 - 4-13/16", 8 pt Axle Nut Socket



- ATD-11201 - 2-3/32", 6 pt Axle Nut Socket
- ATD-11204 - 2-9/16", 6 pt Axle Nut Socket
- ATD-11206 - 3", 6 pt Axle Nut Socket
- ATD-11212 - 3-7/8", 6 pt Axle Nut Socket
- ATD-11213 - 3-7/8", 8 pt Axle Nut Socket
- ATD-11228 - 2-9/16", Rounded 6 pt Axle Nut Socket
- ATD-11231 - 3-3/4", 6 pt Axle Nut Socket
- ATD-11250 - 4-1/2", 8 pt Axle Nut Socket



## ATD-8624 5-PC. 1" DR. BUDD WHEEL SOCKET SET

### Set Contains:

- ATD-86242 - 35mm x 17mm Square Budd Wheel Impact Socket
- ATD-86245 - 1-1/2" x 13/16" Square Budd Wheel Impact Socket (for American made trucks with dual rear wheels)
- ATD-86243 - 38mm x 20mm Square Budd Wheel Impact Socket
- ATD-86244 - 41mm x 21mm Square Budd Wheel Impact Socket
- ATD-86241 - 33mm Deep Impact Socket (for Mack Midliners, Volvo and other import trucks with dual rear wheels)
- Molded storage case included



## ATD-8628 8-PC. AXLE/SPINDLE NUT SOCKET SET 12 POINT

### Features:

- Extra-deep 1/2" drive
- 12-point sockets fit axle nuts on most domestic and import vehicles
- Heavy-duty chrome moly steel for use with impact wrenches
- Large, easy-to-read size identification

### Set Includes:

- 1/2" drive 12-point deep impact sockets:
  - 29mm • 32mm • 35mm • 38mm
  - 30mm • 34mm • 36mm • 39mm • Wheel Diameter: 7-3/4"



## ATD-4354 4-PC. 1/2" DR. PROTECTIVE WHEEL NUT FLIP IMPACT SOCKET SET

### Features:

- Manufactured using quality Chrome-Molybdenum alloy steel
- Feature protective plastic socket sleeves to prevent damage to expensive custom wheels
- Flip sockets give more sizes with fewer sockets
- Flip sockets and impact extension available individually

### Set Contains:

- Molded Storage Case
- (3) 1/2" Drive Flip Sockets: ATD-43541 - 17mm x 19mm Flip Socket; ATD-43543 - 7/8" x 21mm Flip Socket; ATD-43542 - 3/4" x 13/16" Flip Socket
- (1) 1/2" Drive 3" Impact Extension: ATD-4702 - 3" Long 1/2" Drive Impact Extension



## ATD-4357 7-PC. SAE/METRIC PROTECTIVE IMPACT SOCKET SET

### Features:

- Manufactured using quality chrome molybdenum alloy steel
- Sockets feature outer protective sleeves and inner plastic inserts to prevent damage to custom wheels and decorative lug nuts
- 1/2" drive
- Hollow design for use on longer wheel studs
- Color-coded for easy identification

### Set Contains:

- ATD-4358 - 17mm (Blue)
- ATD-4361 - 13/16" (Purple)
- ATD-4364 - 1-1/16" (Black)
- ATD-4359 - 19mm (Yellow)
- ATD-4362 - 7/8" (Green)
- Molded storage case
- ATD-4360 - 21mm (Red)
- ATD-4363 - 1" (Bronze)



## ATD-3065 16-PC. LOCKING WHEEL NUT MASTER KEY SET

### Features:

- Specifically designed to easily remove locking lug nuts on aftermarket wheels
- Thin wall sockets prevent damage to wheels
- Extra long lug keys keep your wrench away from the wheel preventing nicks and scratches
- Double hex head design fits most lug wrenches as well as 13/16" and 7/8" sockets
- Heat treated chrome vanadium steel construction
- Durable black oxide finish

### Set Contains:

- 12-Spline Small Diameter Socket, 11/16" Inner Diameter
- 6-Spline Small Diameter Socket, 41/64" Inner Diameter
- 6-Spline Small Diameter Socket, 45/64" Inner Diameter
- 9-Point Star Lug, 1/2" Outer Diameter
- High Tech Fluted Hex Lug, 12mm Outer Diameter
- High Tech Hex Lug, 12mm Outer Diameter
- High Tech Hex Lug, 9/16" Outer Diameter
- 8-Point Star Lug, 5/8" Outer Diameter
- 7-Spline Small Diameter Socket, 5/8" Inner Diameter
- 5-Spline Small Diameter Socket, 5/8" Inner Diameter
- 7-Spline Small Diameter Socket, 11/16" Inner Diameter
- 10-Point Star Lug, 1/2" Outer Diameter
- 8-Point Star Lug, 7/16" Outer Diameter
- High Tech Hex Lug, 15mm Outer Diameter
- 12-Spline Small Diameter Socket, 13/16" Inner Diameter
- 7-Spline Small Diameter Socket, 3/4" Inner Diameter







**ATD-6327**  
**BUDD WHEEL IMPACT SOCKET**  
**13/16\"/>**

**Features:**

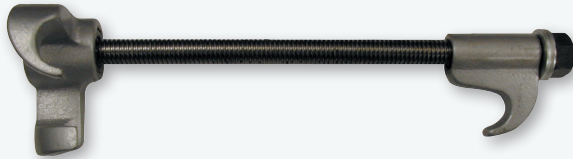
- 3/4" square drive
- Manufactured using quality chrome molybdenum alloy steel
- Used to remove 13/16" lug nuts on Budd wheels



**ATD-6471**  
**BUDD WHEEL IMPACT SOCKET 13/16\"/>**

**Features:**

- 3/4" square drive
- Manufactured using quality chrome molybdenum alloy steel
- Used to remove 13/16" lug nuts on Budd wheels



**ATD-7551**  
**MACPHERSON STRUT SPRING COMPRESSOR**

**Features:**

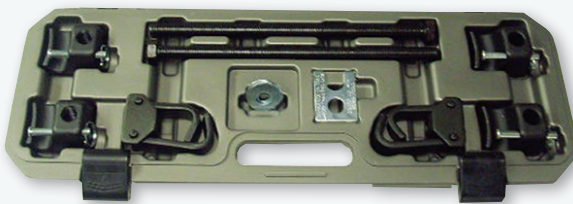
- Can be used with an impact wrench or hand tool
- Used for shock absorber replacement, spring set replacement, bent strut or strut tube replacement and for damaged spindles



**ATD-7549**  
**COIL SPRING COMPRESSOR**

**Features:**

- Compresses coil springs for installation and removal of springs and spacers
- Strong steel jaws securely hook into coil spring
- Fits most American and some imported cars and light trucks
- Does not work on AMC and Ford with upper coil spring
- Length: 12-1/8"
- CAUTION: WEAR SAFETY GOGGLES



**ATD-7550**  
**MASTER SPRING COMPRESSOR SET**

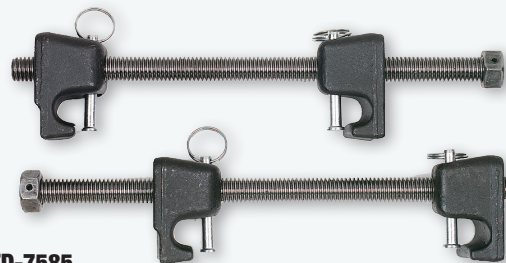
Features 2 of our most popular spring compressors packed in a heavy-duty molded case.

**ATD-7585 Master MacPherson Strut Tool:**

- Broad spring contact
- ACME threaded rod
- Built-in detent pins to help lock the coil in place
- Designed to compress most sizes of MacPherson strut springs
- Allows quick compression of the coil spring to replace the shock absorber or spring set
- Also allows for repairs on bent struts, strut tubes and damaged pieces
- Forged construction for repetitive use

**ATD-7549 Coil Spring Compressor:**

- Compresses coil springs for installation and removal of springs and spacers
- Strong steel jaws securely hook into coil spring
- Fits most American and some imported cars and light trucks
- Does not work on AMC and Ford with upper coil spring



**ATD-7585**  
**MASTER MACPHERSON STRUT TOOL**

**Features:**

- Broad spring contact
- ACME threaded rod
- Built-in detent pins to help lock the coil in place
- Designed to compress most sizes of MacPherson strut springs
- Allows quick compression of the coil spring to replace the shock absorber or spring set
- Also allows for repairs on bent struts, strut tubes and damaged pieces
- Forged construction for repetitive use
- Sold in pairs
- Sold in clamshell blister packaging

# TIRE REPAIR KITS • TORQUE

## ATD-8630 45-PC. TIRE REPAIR TOOL KIT

Repair any size tubeless tire without demounting!

### Kit Includes:

- (40) Tire Repair Plug (ATD-86301)
- Tire Repair Lubricant (ATD-86302)
- T-Handle Spiral Probe Reamer
- T-Handle Insert Tool
- (2) 3mm Hex Wrenches
- Packed in a molded storage case



## ATD-8635 35-PC. TRUCK TIRE REPAIR KIT

### Features:

- This truck tire repair kit is designed for the professional
- Repair any size tubeless tires without dismounting

### Kit Includes:

- T-Handle Spiral Probe Reamer
- (30) 7.5" Tire Repair Plugs (ATD-86303)
- T-Handle Insertion Tool
- Tire Repair Lubricant (ATD-86302)
- (2) Hex Keys



## ATD-4375 5-PC. 1/2" DRIVE WHEEL TORQUE EXTENSION SET

### Features:

- Manufactured using quality chrome molybdenum alloy steel
- Helps eliminate damage to wheels and brake rotors when torquing wheel nuts
- Use with 1/2" impact gun and thin wall or regular impact sockets
- Color-coded for easy identification

### Also Available Separately:

- ATD-43751 - 65 ft.-lbs. (88 Nm) (Green)
- ATD-43752 - 80 ft.-lbs. (110 Nm) (Yellow)
- ATD-43753 - 100 ft.-lbs. (135 Nm) (Dark Blue)
- ATD-43754 - 120 ft.-lbs. (160 Nm) (Gray)
- ATD-43755 - 140 ft.-lbs. (190 Nm) (White)



## ATD-4380 10-PC. 1/2" DR. WHEEL TORQUE EXTENSION SET

### Features:

- Manufactured using quality chrome molybdenum alloy steel
- Helps eliminate damage to wheels and brake rotors when torquing wheel nuts
- Use with 1/2" impact gun and thin wall or regular impact sockets
- Color-coded for easy identification

### Also Available Separately:

- ATD-43751 - 65 ft.-lbs. (88 Nm) (Green)
- ATD-43752 - 80 ft.-lbs. (110 Nm) (Yellow)
- ATD-43753 - 100 ft.-lbs. (135 Nm) (Dark Blue)
- ATD-43754 - 120 ft.-lbs. (160 Nm) (Gray)
- ATD-43755 - 140 ft.-lbs. (190 Nm) (White)
- ATD-43756 - 75 ft.-lbs. (95 Nm) (Black)
- ATD-43757 - 90 ft.-lbs. (120 Nm) (Red)
- ATD-43758 - 110 ft.-lbs. (150 Nm) (Orange)
- ATD-43759 - 130 ft.-lbs. (175 Nm) (Brown)
- ATD-43760 - 150 ft.-lbs. (200 Nm) (Light Blue)



## ATD-8645 HEAVY-DUTY TORQUE MULTIPLIER

### Features:

- Easily loosen lug nuts on trucks, trailers, commercial vehicles and agricultural equipment

### Specifications:

- Gear Ratio: 58:1
- Max Torque: 2950 ft.-lbs. (4000nm)
- 1" Square Drive
- (2) Sockets: 33mm (1-5/16") and 38mm (1-1/2")
- Extension
- Speed Handle





**ATD-5472**  
**3-IN-1 180° TUBING BENDER**

**Features:**

- Capable of making 180° bends in copper, brass, aluminum and steel tubing
- Just one tool works on (3) sizes of tubing: 1/4", 5/16" and 3/8"

---

**ATD-5479**  
**4-IN-1 TUBING BENDER**

**Features:**

- Bends 3/16", 1/4", 5/16" and 3/8" outside diameter brass, copper, steel or aluminum tubing
- Unique design allows bending in tight spaces
- Comfort grip handles reduce hand fatigue and slippage



**ATD-912**  
**HEAVY-DUTY TUBING BENDER PLIERS**

**Features:**

- Bends 3/16", 1/4", 5/16" and 3/8" diameter copper and steel tubing without kinking or collapsing
- Includes (2) roller adapters



160 Enterprise Drive | Wentzville, MO 63385 | [www.atdtools.com](http://www.atdtools.com)

©2025 ATD Tools, Inc. All rights reserved. Trademarks of companies mentioned herein appear for identification purposes only and are the property of their respective companies.



**ATD-20112**

6 63126 20112 8

A white rounded rectangular box containing the product code 'ATD-20112' in bold black text at the top. Below the text is a standard 1D barcode. At the bottom of the box, the numbers '6 63126 20112 8' are printed in a smaller font.