



**PLATINUM
TECH**

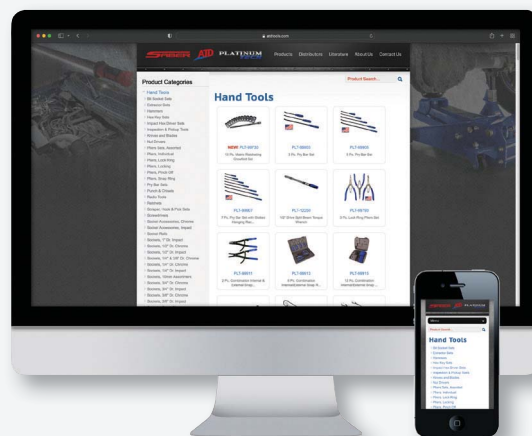
HAND TOOLS



Since 1977, ATD Tools, Inc. has focused on providing professional automotive tools and equipment at competitive prices. After over forty years, we are still committed to providing the quality tools you need at a price you can afford.

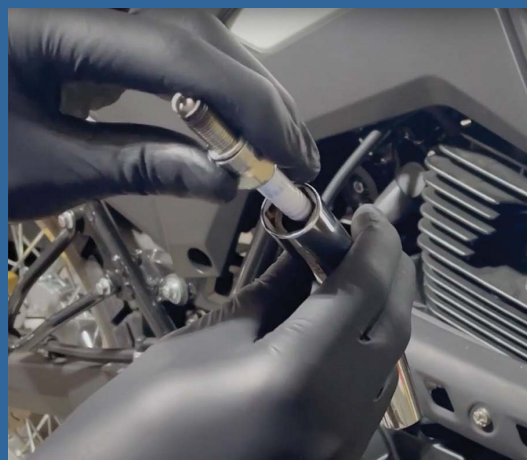
Our tools and equipment are quality control tested at the manufacturer, by independent labs and in the field to ensure they meet the performance and durability professional mechanics demand today and will continue to demand for years to come.

Chrome Sockets & Sets	3-6
Bits & Bit Socket Sets.....	6-9
Socket Rails & Accessories.....	10
Impact Sockets & Sets.....	11-17
Ratchets & Ratchet Sets.....	18
Wrench Sets.....	19-22
Torque Wrenches	23, 24
Plier Sets	24, 25
Specialty Pliers.....	25, 26
Screwdriver & Nut Driver Sets	26, 27
Hex & Star Key Sets	27
Hammers.....	28
Punch & Chisel Sets	29, 30
Pry Bar Sets.....	31
Scraper Sets	32
Utility Knives	32
Utility Scrapers & Blades.....	33
Scrapers, Picks & Hooks	34
Brushes, Inspection Tools & Tape Measure	34, 35



Visit us online at www.atdtools.com to view the full line of products available.

A pdf version of this catalog along with other informational pdf files are available online under the "Literature" tab.





ATD-1380

106-PC. 1/4" & 3/8" DR. 6 POINT MASTER SAE & METRIC CHROME SOCKET SET

Set Contains:

(1/4" Drive):

- (9) Standard SAE Sockets
- (9) Deep SAE Sockets
- (8) Standard Metric Sockets
- 45 Tooth, Quick Release Ratchet
- (2) Wobble Extensions
- Spinner Handle
- Adapter
- Universal Joint
- Flex Handle

(3/8" Drive):

- (9) Standard SAE Sockets
- (9) Deep SAE Sockets
- (12) Standard Metric Sockets
- (12) Deep Metric Sockets
- 45 Tooth, Quick Release Ratchet
- (3) Wobble Extensions
- (3) Spark Plug Sockets
- Adapter
- Universal Joint
- Flex Handle

Also Includes:

- (3) Slotted Bits and Holder
- (4) Phillips Bits and Holder
- (6) Hex Bits and Holder
- (7) TORX® Bits and Holder
- Molded storage case



ATD-1200

44-PC. 1/4" DRIVE 6 POINT SAE & METRIC PRO SOCKET SET

Features:

- Manufactured of heat-treated chrome-vanadium steel
- Meets or exceeds ANSI specifications

Set Contains:

- (10) Standard SAE Sockets
- (8) Deep SAE Sockets
- (13) Standard Metric Sockets
- (10) Deep Metric Sockets
- 45 tooth, Quick Release Ratchet
- (2) Extensions
- Molded storage case



ATD-1245

47-PC. 3/8" DRIVE 6-POINT SAE & METRIC PRO SOCKET SET

Features:

- Manufactured of heat-treated chrome vanadium steel
- Meets or exceeds ANSI specifications
- Molded storage case included

Set Contains:

- (11) Standard SAE Sockets
- (9) Deep SAE Sockets
- (14) Standard Metric Sockets
- (10) Deep Metric Sockets
- 45 tooth, Quick Release Ratchet
- (2) Extensions



ATD-1247

47-PC. 3/8" DRIVE 12-POINT SAE & METRIC PRO SOCKET SET

Features:

- Manufactured of heat-treated chrome vanadium steel
- Meets or exceeds ANSI specifications
- Molded storage case included

Set Contains:

- (11) Standard SAE Sockets
- (9) Deep SAE Sockets
- (14) Standard Metric Sockets
- (10) Deep Metric Sockets
- 45 tooth, Quick Release Ratchet
- (2) Extensions
- Molded storage case



ATD-1360

24-PC. 1/2" DRIVE 6 POINT SAE & METRIC SOCKET SET

Set Contains:

- (11) Standard SAE Sockets
- (9) Standard Metric Sockets
- Quick Release Ratchet
- (2) Extensions
- Flex Handle
- Molded storage case



ATD-1365

43-PC. 1/2" DRIVE 6-POINT SAE & METRIC CHROME SOCKET SET

Set Contains:

- (12) Standard SAE Sockets
- (12) Deep SAE Sockets
- (11) Standard Metric Sockets
- (2) Spark Plug Sockets
- Universal Joint
- (3) Wobble Extensions
- Flex Handle
- Quick Release Ratchet
- Molded Storage Case

CHROME SOCKETS & SETS



ATD-10021 21-PC. 3/4" DRIVE 6 POINT SAE SOCKET SET

Set Contains:

- (16) Standard SAE Sockets
- Ratchet
- (2) Extensions
- Breaker Bar
- Molded storage case



ATD-6508 8-PC. STUD REMOVER SET SAE/MM

Features:

- (Internal rollers grip stud securely for quick removal or installation without damage
- Great for hard-to-reach studs

Set Contains:

- 3/8" drive for 6mm, 8mm, 1/4" and 5/16" stud sizes
- 1/2" drive for 10mm, 12mm, 3/8" and 7/16" stud sizes
- Molded storage case

PLT-99210 10-PC. 10MM SOCKET ASSORTMENT

Features:

- Chrome sockets manufactured from chrome-vanadium steel
- Impact sockets manufactured from chrome-molybdenum steel

Set Contains:

- PLT-99211 - 1/4" Dr. 6 pt. Std. Socket
- PLT-99212 - 1/4" Dr. 6 pt. Deep Socket
- PLT-99213 - 1/4" Dr. 12 pt. Flex Socket
- PLT-99214 - 1/4" Dr. 6 pt. Deep Impact Socket
- PLT-99215 - 1/4" Dr. 6 pt. Std. Impact Socket
- PLT-99216 - 3/8" Dr. 6 pt. Standard Socket
- PLT-99217 - 3/8" Dr. 6 pt. Deep Socket
- PLT-99218 - 3/8" Dr. 12 pt. Flex Socket
- PLT-99219 - 3/8" Dr. 6 pt. Deep Impact Socket
- PLT-99220 - 3/8" Dr. 6 pt. Std. Impact Socket
- Socket rail for easy storage



PLT-99610 10-PC. MASTER SPARK PLUG SOCKET SET

Features:

- Seven of the most popular spark plug socket sizes for use on a majority of foreign and domestic vehicles
- Sockets are equipped with internal magnets to securely hold spark plugs in place during both removal and installation processes
- Dual drive feature enables you to turn sockets using either a 3/8" internal square drive or wrenches on the external drive hex
- Three different 3/8" locking square drive universal joint extensions allow access to difficult-to-reach areas
- Locking square drive securely holds the socket to the universal joint extension bar during installation and removal
- Chrome vanadium steel for strength and durability
- Full polish chrome finish for superior corrosion resistance
- Meets or exceeds ANSI standards



PLT-99633 3-PC. 3/8" DRIVE LOCKING UNIVERSAL EXTENSION SET

Set Contains:

- PLT-99623 - 3/8" Dr. 4" Locking Universal Extension
- PLT-99624 - 3/8" Dr. 7" Locking Universal Extension
- PLT-99625 - 3/8" Dr. 11" Locking Universal Extension



PLT-99303 3-PC. SPRING LOADED UNIVERSAL JOINT SET

Set Contains:

- PLT-99304 - 1/4" Drive Spring Loaded U-Joint
- PLT-99305 - 3/8" Drive Spring Loaded U-Joint
- PLT-99306 - 1/2" Drive Spring Loaded U-Joint



SLIDING T-BARS

- ATD-120051 - 1/4" Sliding T-Bar
- ATD-124576 - 3/8" Drive Sliding T-Bar
- ATD-136052 - 1/2" Dr. Chrome Sliding T-Bar



PLT-124577 3/8" DRIVE 10" EXTENSION BAR

PLATINUM
TECH



ATD-136025 1/2" DR. 10" CHROME FLEX HANDLE

ATD-1209 9-PC. WOBBLE EXTENSION SET

Features:

- Functions as a standard extension when fully inserted or as a wobble / angle extension if partially inserted into the socket
- Each extension includes a knurled section for better grip and a ball detent for secure socket retention
- Made from chromium-vanadium steel for strength with a full polished chrome finish for corrosion resistance and easy clean up

Set Contains:

- 1/4" Dr. = 2", 4" & 6"
- 3/8" Dr. = 3", 6" & 10"
- 1/2" Dr. = 3", 5" & 10"



PLT-99813 13-PC. 3/8" DRIVE METRIC SPLINE SOCKET SET

Features:

- Spline feature works on: Spline, 6 pt., 12 pt., Star, Square and Rounded Hex fasteners
- Manufactured using quality chrome-vanadium alloy steel
- Heat-treated for strength and durability
- Meets or exceeds ANSI specifications

Set Contains:

- (13) 3/8" Drive Metric Spline Sockets
- Heavy-duty aluminum socket rail for easy storage

PLATINUM
TECH



PLT-99814 14-PC. 1/4" DRIVE METRIC SPLINE SOCKET SET

Features:

- Spline feature works on: Spline, 6 pt., 12 pt., Star, Square and Rounded Hex fasteners
- Manufactured using quality chrome-vanadium alloy steel
- Heat-treated for strength and durability
- Meets or exceeds ANSI specifications

Set Contains:

- (14) 1/4" Drive Metric Spline Sockets
- Heavy-duty aluminum socket rail for easy storage

PLATINUM
TECH



PLT-99817 17-PC. 1/2" DRIVE METRIC SPLINE SOCKET SET

Features:

- Spline feature works on: Spline, 6 pt., 12 pt., Star, Square, and Rounded Hex fasteners
- Manufactured using quality chrome-vanadium alloy steel
- Heat-treated for strength and durability
- Meets or exceeds ANSI specifications

Set Contains:

- (17) 1/2" Drive Metric Spline Sockets

PLATINUM
TECH

PLT-99812 12-PC. 1/4" DRIVE METRIC DEEP SPLINE SOCKET SET

Features:

- Spline feature works on 6 fastener types: Hex, Square, 12 Point, E-Torx, Rounded Hex, and Spline
- Manufactured using quality chrome-vanadium alloy steel
- Heat-treated for strength and durability
- Meets or exceeds ANSI specifications

Set Contains:

- (12) 1/4" Drive Deep Spline Sockets
- Heavy-duty aluminum socket rail for easy storage

PLATINUM
TECH

CHROME SOCKETS & SETS • BITS & BIT SOCKET SETS

ATD-13772 72-PC. MASTER STAR BIT SOCKET SET



Features:

- A complete star bit socket set for all applications
- Includes 6-lobe standard, 6-lobe tamper-resistant, 6-lobe star plus, 5-lobe tamper-resistant star plus and external star bit sockets
- Bits are made from S2 steel to meet or exceed torque specifications
- Sockets are made from heat treated chrome vanadium steel for strength & durability
- ATD carries a complete line of bit sockets available individually.
- These high quality star bit sockets are designed to be used with hand tools only. The bit socket warranty is voided if they are used with any type of impact tools.

Set Contains:

- (17) 6-Lobe Star Bit Sockets
- (12) 6-Lobe Star Plus Bit Sockets
- (17) Tamper-Resistant 6-Lobe Star Bit Sockets
- (14) Standard External Star Sockets
- (12) Tamper-Resistant 5-Lobe Star Plus Bit Sockets

ATD-124578 3/8" DRIVE FEMALE X 1/2" MALE 3-WAY ADAPTER



ATD-13852 1/2" DRIVE, 5/8" SPARK PLUG SOCKET

Features:

- Manufactured from the finest heavy-duty chrome vanadium



ATD-125 35-PC. STAR BIT SOCKET SET

Features:

- The most popular star bit sockets for general use
- Includes 6-lobe standard, 6-lobe tamper-resistant, and external star bit sockets
- Bits are made from S2 steel to meet or exceed torque specifications
- Sockets are made from heat treated chrome vanadium steel for strength & durability
- These high quality star bit sockets are designed to be used with hand tools only. The bit socket warranty is voided if they are used with any type of impact tools.
- ATD carries a complete line of bit sockets available individually.

Set Contains:

- (13) 6-Lobe Star Bit Sockets
- (12) Tamper-Resistant 6-Lobe Star Bit Sockets
- (10) Standard External Star Sockets



ATD-13853 1/2" DRIVE, 13/16" SPARK PLUG SOCKET

Features:

- Manufactured from the finest heavy-duty chrome vanadium



ATD-124550 3/8" DRIVE, 5/8" SPARK PLUG SOCKET

Features:

- Manufactured from the finest heavy-duty chrome vanadium



ATD-13779 28-PC. EXTERNAL STAR SOCKET SET

Features:

- Includes standard & deep external star sockets
- Sockets are made from heat treated chrome vanadium steel for strength & durability
- ATD carries a complete line of bit sockets available individually.
- These high quality star sockets are designed to be used with hand tools only. The socket warranty is voided if they are used with any type of impact tools.

Set Contains:

- (14) Standard External Star Sockets
- (14) Deep External Star Sockets



ATD-124551 3/8" DRIVE, 13/16" SPARK PLUG SOCKET

Features:

- Manufactured from the finest heavy-duty chrome vanadium



ATD-124580 3/8" DRIVE, 3/4" SPARK PLUG SOCKET

Features:

- Manufactured from the finest heavy-duty chrome vanadium



ATD-178 10-PC. EXTERNAL STAR SOCKET SET

Features:

- Includes standard external star sockets
- Sockets are made from heat treated chrome vanadium steel for strength & durability
- These high quality star sockets are designed to be used with hand tools only. The socket warranty is voided if they are used with any type of impact tools.
- ATD carries a complete line of sockets available individually.

Set Contains:

- (10) Standard External Star Sockets



ATD-13773 13-PC. STAR BIT SOCKET SET

Features:

- Includes 6-lobe standard star bit sockets
- Bits are made from S2 steel to meet or exceed torque specifications
- Sockets are made from heat treated chrome vanadium steel for strength & durability
- ATD carries a complete line of bit sockets available individually.
- These high quality star bit sockets are designed to be used with hand tools only. The bit socket warranty is voided if they are used with any type of impact tools.

Set Contains:

- (13) 6-Lobe Standard Star Bit Sockets



ATD-13774 7-PC. EXTRA LONG STAR BIT SOCKET SET

Features:

- 6-lobe standard star bit sockets with extra long 3-1/8" shank (4-1/4" overall length) for easy access to tight areas
- Bits are made from S2 steel to meet or exceed torque specifications
- Sockets are made from heat treated chrome vanadium steel for strength & durability
- ATD carries a complete line of bit sockets available individually.
- These high quality star bit sockets are designed to be used with hand tools only. The bit socket warranty is voided if they are used with any type of impact tools.

Set Contains:

- (7) Extra Long 6-Lobe Standard Star Bit Sockets



ATD-13775 13-PC. TAMPER- RESISTANT STAR BIT SOCKET SET

Features:

- Includes 6-lobe tamper-resistant star bit sockets
- Bits are made from S2 steel to meet or exceed torque specifications
- Sockets are made from heat treated chrome vanadium steel for strength & durability
- ATD carries a complete line of bit sockets available individually.
- These high quality star bit sockets are designed to be used with hand tools only. The bit socket warranty is voided if they are used with any type of impact tools.

Set Contains:

- (13) 6-Lobe Tamper-Resistant Star Bit Sockets



ATD-13776 7-PC. EXTRA LONG TAMPER-RESISTANT STAR BIT SOCKET SET

Features:

- 6-lobe tamper-resistant star bit sockets with extra long 3-1/8" shank (4-1/4" overall length) for easy access to tight areas
- Bits are made from S2 steel to meet or exceed torque specifications
- Sockets are made from heat treated chrome vanadium steel for strength & durability
- ATD carries a complete line of bit sockets available individually.
- These high quality star bit sockets are designed to be used with hand tools only. The bit socket warranty is voided if they are used with any type of impact tools.

Set Contains:

- (7) Extra Long 6-Lobe Tamper-Resistant Star Bit Sockets



ATD-13777 12-PC. STAR PLUS BIT SOCKET SET

Features:

- Includes 6-lobe star plus bit sockets
- Bits are made from S2 steel to meet or exceed torque specifications
- Sockets are made from heat treated chrome vanadium steel for strength & durability

ATD carries a complete line of bit sockets available individually.

These high quality star bit sockets are designed to be used with hand tools only. The bit socket warranty is voided if they are used with any type of impact tools.

Set Contains:

- (12) 6-Lobe Star Plus Bit Sockets



ATD-13778 12 PC. 5-LOBE TAMPER-RESISTANT STAR PLUS BIT SOCKET SET

Features:

- Includes 5-lobe tamper-resistant star plus bit sockets
- Bits are made from S2 steel to meet or exceed torque specifications
- Sockets are made from heat treated chrome vanadium steel for strength & durability
- ATD carries a complete line of bit sockets available individually.
- These high quality star bit sockets are designed to be used with hand tools only. The bit socket warranty is voided if they are used with any type of impact tools.

Set Contains:

- (12) 5-Lobe Tamper-Resistant Star Plus Bit Sockets



ATD-13780 13-PC RIBE BIT SOCKET SET

Features:

- Includes 6-lobe ribe/polydrive bit sockets
- Bits are made from S2 steel to meet or exceed torque specifications
- Sockets are made from heat treated chrome vanadium steel for strength & durability
- Custom blow molded case included.
- ATD carries a complete line of bit sockets available individually.
- These high quality ribe bit sockets are designed to be used with hand tools only. The bit socket warranty is voided if they are used with any type of impact tools.

Set Contains:

- (13) Ribite Bit Sockets



BITS & BIT SOCKET SETS

ATD-13781

10-PC. EXTRA LONG TRIPLE SQUARE SPLINE BIT SOCKET SET

Features:

- Extra long 4" shank
- Bits are made from S2 steel to meet or exceed torque specifications
- Sockets are made from heat treated chrome vanadium steel for strength & durability
- Custom blow molded case included.
- ATD carries a complete line of bit sockets available individually.
- These high quality triple square spline bit sockets are designed to be used with hand tools only. The bit socket warranty is voided if they are used with any type of impact tools.

Set Contains:

- (10) Extra Long Triple Square Spline Bit Sockets



ATD-13782

10-PC. TRIPLE SQUARE SPLINE BIT SOCKET SET

Features:

- Includes triple square spline bit sockets
- Bits are made from S2 steel to meet or exceed torque specifications
- Sockets are made from heat treated chrome vanadium steel for strength & durability
- ATD carries a complete line of bit sockets available individually.
- Custom blow molded case included.
- These high quality triple square spline bit sockets are designed to be used with hand tools only. The bit socket warranty is voided if they are used with any type of impact tools.

Set Contains:

- (10) Triple Square Spline Bit Sockets



ATD-13783

32-PC. MASTER HEX BIT SOCKET SET

Features:

- A complete hex bit socket set for all applications.
- Includes SAE & Metric hex bit sockets.
- Bits are made from S2 steel to meet or exceed torque specifications.
- Sockets are made from heat treated chrome vanadium steel for strength & durability.
- Custom blow molded case included (14" x 5" x 2").
- ATD carries a complete line of bit sockets available individually.
- These high quality hex bit sockets are designed to be used with hand tools only. The bit socket warranty is voided if they are used with any type of impact tools.

Set Contains:

- (16) SAE Hex Bit Sockets • (16) Metric Hex Bit Sockets



ATD-13784

13-PC. SAE HEX BIT SOCKET SET

Features:

- Bits are made from S2 steel to meet or exceed torque specifications
- Sockets are made from heat treated chrome vanadium steel for strength & durability
- ATD carries a complete line of bit sockets available individually.
- Custom blow molded case included.
- These high quality hex bit sockets are designed to be used with hand tools only. The bit socket warranty is voided if they are used with any type of impact tools.

Set Contains:

- (13) SAE Hex Bit Sockets



ATD-13785

13-PC. METRIC HEX BIT SOCKET SET

Features:

- Bits are made from S2 steel to meet or exceed torque specifications
- Sockets are made from heat treated chrome vanadium steel for strength & durability
- ATD carries a complete line of bit sockets available individually.
- Custom blow molded case included.
- These high quality hex bit sockets are designed to be used with hand tools only. The bit socket warranty is voided if they are used with any type of impact tools.

Set Contains:

- (13) Metric Hex Bit Sockets



ATD-13786

7-PC. EXTRA LONG SAE HEX BIT SOCKET SET

Features:

- Extra long 3-1/8" shank (4-1/4" overall length) for easy access to tight areas
- Bits are made from S2 steel to meet or exceed torque specifications
- Sockets are made from heat treated chrome vanadium steel for strength & durability
- Custom blow molded case included.
- ATD carries a complete line of bit sockets available individually.
- These high quality hex bit sockets are designed to be used with hand tools only. The bit socket warranty is voided if they are used with any type of impact tools.

Set Contains:

- (7) Extra Long SAE Hex Bit Sockets



ATD-13787

7-PC. EXTRA LONG METRIC HEX BIT SOCKET SET

Features:

- Extra long 3-1/8" shank (4-1/4" overall length) for easy access to tight areas
- Bits are made from S2 steel to meet or exceed torque specifications
- Sockets are made from heat treated chrome vanadium steel for strength & durability
- Custom blow molded case included.
- ATD carries a complete line of bit sockets available individually.
- These high quality hex bit sockets are designed to be used with hand tools only. The bit socket warranty is voided if they are used with any type of impact tools.

Set Contains:

- (7) Extra Long Metric Hex Bit Sockets



ATD-13788

8-PC. LARGE SIZE SAE/METRIC HEX BIT SOCKET SET

Features:

- Large size SAE & metric hex bit sockets
- Bits are made from S2 steel to meet or exceed torque specifications
- Sockets are made from heat treated chrome vanadium steel for strength & durability
- Custom blow molded case included.
- ATD carries a complete line of bit sockets available individually.
- These high quality hex bit sockets are designed to be used with hand tools only. The bit socket warranty is voided if they are used with any type of impact tools.

Set Contains:

- (8) Large Size Hex Bit Sockets



ATD-13791 7-PC. SAE EXTRA-LONG BALL-END HEX BIT SOCKET SET

Features:

- Ball-End for angle entry with extra-long 4-1/4" shank for access to tight areas
- Bits are made from S2 Steel to meet or exceed torque specifications
- Sockets are made from heat-treated chrome vanadium steel for strength and durability.

Set Contains:

- ATD-13764 - 1/8" • ATD-13768 - 1/4"
- ATD-13765 - 5/32" • ATD-13769 - 5/16"
- ATD-13766 - 3/16" • ATD-13770 - 3/8"
- ATD-13767 - 7/32"



ATD-13792 7-PC. METRIC EXTRA-LONG BALL-END HEX BIT SOCKET SET

Features:

- Ball-End for angle entry with extra-long 4-1/4" shank for access to tight areas
- Bits are made from S2 Steel to meet or exceed torque specifications
- Sockets are made from heat-treated chrome vanadium steel for strength and durability

Set Contains:

- ATD-13757 - 3mm • ATD-13761 - 7mm
- ATD-13758 - 4mm • ATD-13762 - 8mm
- ATD-13759 - 5mm • ATD-13763 - 10mm
- ATD-13760 - 6mm



ATD-13794 13-PC. TAMPER- RESISTANT SAE HEX BIT SOCKET SET

Features:

- Bits are made from S2 steel to meet or exceed torque specifications
- Sockets are made from heat treated chrome vanadium steel for strength & durability
- ATD carries a complete line of bit sockets available individually.
- Custom blow molded case included.
- These high quality hex bit sockets are designed to be used with hand tools only. The bit socket warranty is voided if they are used with any type of impact tools.

Set Contains:

- (13) SAE Hex Bit Sockets



ATD-13795 13-PC. TAMPER- RESISTANT METRIC HEX BIT SOCKET SET

Features:

- Bits are made from S2 steel to meet or exceed torque specifications
- Sockets are made from heat treated chrome vanadium steel for strength & durability
- ATD carries a complete line of bit sockets available individually.
- Custom blow molded case included.
- These high quality hex bit sockets are designed to be used with hand tools only. The bit socket warranty is voided if they are used with any type of impact tools.

Set Contains:

- (13) Metric Hex Bit Sockets



ATD-505 105-PC. MASTER BIT SET WITH RATCHET

Set Contains:

- Reversible ratchet
- 1/4" hex quick-release chuck
- 1/4" sq. x 1/4" hex x 1" ext.
- 1/4" sq. x 1/4" hex x 2" ext.
- "Y" shape driver
- 100 Pc. 25mm Chrome Vanadium Bits
- Molded storage case



ATD-545 45-PC. POWER BIT SET

Set Contains:

- (3) Square Drive Adapters: 1/4", 3/8", 1/2"
- Magnetic Bit Socket
- Swivel Head Quick Release
- (20) 1" Long Bits:
- (4) Phillips: 0, 1, 2, 3
- (4) Pozzi Drive (PZ): 0, 1, 2, 3
- (4) Hex: 3, 4, 5, 6mm
- (4) Slotted: 5-6, 6-8, 8-10, 10-12
- (4) Tamper Proof Torx: 15, 20, 25, 30
- (20) Nut Setters



ATD-549 90-PC. MASTER BIT SET WITH RATCHETING SCREWDRIVER

Set Contains:

- (76) Assorted bits
- Soft grip, stubby reversible ratcheting screwdriver
- Magnetic bit holder
- Socket bit holder
- Molded storage case included
- 1/4" sq. x 1/4" hex x 1" ext.
- 1/4" sq. x 1/4" hex x 2" ext.
- Wing nut driver



ATD-551 50-PC. TORSION IMPACT BIT SET

Features:

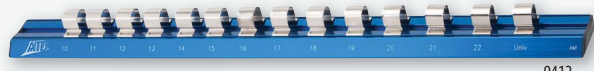
- (50) Assorted bits, adapters, chucks, socket drivers
- Torsion design allows the bit to flex to protect and extend the life of both bit and fastener
- Impact rated to withstand a higher torque load without stripping or breaking
- CNC precision machined to maximize fit into fasteners for extended bit life
- Heat treated for durability and toughness
- Manganese phosphate coating for corrosion resistance



SOCKET RAILS • SOCKET ACCESSORIES



9312



9412

ATD-9312 1/2" SAE MAGNETIC ALUMINUM SOCKET RAIL

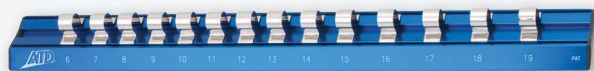
ATD-9412 1/2" METRIC MAGNETIC ALUMINUM SOCKET RAIL

Features:

- Accepts standard and deep sockets
- Sizes marked on rails for easy identification
- Anodized aluminum rail construction
- Super strong magnet for solid placement



9338



9438

ATD-9338 3/8" SAE MAGNETIC ALUMINUM SOCKET RAIL

ATD-9438 3/8" METRIC MAGNETIC ALUMINUM SOCKET RAIL

Features:

- Accepts standard and deep sockets
- Sizes marked on rails for easy identification
- Anodized aluminum rail construction
- Super strong magnet for solid placement



9314



9414

ATD-9314 1/4" SAE MAGNETIC ALUMINUM SOCKET RAIL

ATD-9414 1/4" METRIC MAGNETIC ALUMINUM SOCKET RAIL

Features:

- Accepts standard and deep sockets
- Sizes marked on rails for easy identification
- Anodized aluminum rail construction
- Super strong magnet for solid placement



ATD-2864 4-PC. 3/8" DRIVE IMPACT EXTENSION SET

Features:

- Manufactured using quality chrome-molybdenum alloy steel
- Heat-treated for strength and durability
- Meets or exceeds ANSI specifications



Set Contains:

- ATD-2857 - 3/8" Dr Impact Extension - 1-3/4"
- ATD-2852 - 3/8" Dr Impact Extension - 6"
- ATD-2851 - 3/8" Dr Impact Extension - 3"
- ATD-2859 - 3/8" Dr Impact Extension - 12"



ATD-4864 4 PC. 1/2" DRIVE IMPACT EXTENSION SET

Features:

- Manufactured using quality chrome-molybdenum alloy steel
- Heat-treated for strength and durability
- Meets or exceeds ANSI specifications



Set Contains:

- ATD-4702 - 3" Impact Extension
- ATD-4452 - 6" Impact Extension
- ATD-4707 - 7" Impact Extension
- ATD-4704 - 10" Impact Extension



ATD-4717 17-PC. MASTER IMPACT ACCESSORY SET

Features:

- Manufactured using quality chrome-molybdenum alloy steel
- Heat-treated for strength and durability
- Meets or exceeds ANSI specifications
- Black phosphate finish



Set Contains:

- (9) Assorted wobble extensions
- (3) Increasing impact adapters
- (3) Universal joints
- (2) Reducing impact adapters



ATD-316 3-PC. SOCKET RAIL SET

Set Contains:

- 1/4" Socket Rail
- Durable plated steel rails with (16) slide-on clips that hold sockets tight
- 3/8" Socket Rail
- Screw holes for affixing to wall or cabinet
- 1/2" Socket Rail
- Length - 16"

ATD-2248

48-PC. 1/4" DRIVE 6 POINT SAE & METRIC STANDARD & DEEP IMPACT SOCKET SET

Features:

- Made of high-quality chrome-moly steel
- Heat-treated for strength and durability
- Meets or exceeds ANSI specifications

Set Contains:

- (20) SAE Standard and Deep Impact Sockets
- (28) Metric Standard and Deep Impact Sockets



ATD-2275

72-PC. 1/4" DRIVE 6 POINT SAE & METRIC, STANDARD, DEEP & UNIVERSAL IMPACT SOCKET SET

Features:

- Manufactured using quality chrome molybdenum alloy steel
- Heat-treated for strength and durability
- Meets or exceeds ANSI specifications

Set Contains:

- (24) Standard Sockets
- (24) Deep Sockets
- (18) Standard Universal Sockets

Accessories:

- ATD-2650 - 1/4" F x 3/8" M Increasing Impact Adapter
- ATD-2649 - 1/4" Dr. Universal Joint
- ATD-2646 - 2" Extension bar
- ATD-2647 - 4" Extension bar
- ATD-2648 - 6" Extension bar
- ATD-2601 - 1/4" Hex x 1/4" Square Adapter



ATD-2212

12-PC. 1/4" DRIVE 6 POINT METRIC STANDARD UNIVERSAL IMPACT SOCKET SET

Features:

- Manufactured using quality chrome molybdenum alloy steel
- Heat-treated for strength and durability
- Meets or exceeds ANSI specifications

Set Contains:

- (12) Metric Standard Universal Impact Sockets



ATD-2220

20-PC. 1/4" DRIVE 6 POINT SAE STANDARD & DEEP IMPACT SOCKET SET

Features:

- Made of high-quality chrome-moly steel
- Heat-treated for strength and durability
- Standard and Deep Sizes Included & Sold Separately

Set Contains:

- (20) SAE Standard & Deep Impact Sockets



ATD-2228

28-PC. 1/4" DRIVE 6 POINT METRIC STANDARD & DEEP IMPACT SOCKET SET

Features:

- Made of high-quality chrome-moly steel
- Heat-treated for strength and durability
- Standard and Deep Sizes Included & Sold Separately

Set Contains:

- (28) Metric Standard & Deep Impact Sockets



IMPACT SOCKETS & SETS

ATD-2324

24-PC. 3/8" DRIVE 6 POINT SAE STANDARD & DEEP IMPACT SOCKET SET

Features:

- Made of high-quality chrome-moly steel
- Heat-treated for strength and durability
- Meets or exceeds ANSI specifications



Set Contains:

- (12) SAE Standard Impact Sockets
- (12) SAE Deep Impact Sockets



ATD-2326

26-PC. 3/8" DRIVE 6 POINT METRIC STANDARD & DEEP IMPACT SOCKET SET

Features:

- Manufactured using quality chrome molybdenum alloy steel
- Heat-treated for strength and durability
- Meets or exceeds ANSI specifications



Set Contains:

- (13) Metric Standard Impact Sockets
- (13) Metric Deep Impact Sockets



ATD-2450

12-PC. 3/8" DRIVE 6 POINT SAE DEEP IMPACT SOCKET SET

Features:

- Manufactured using quality chrome-molybdenum alloy steel
- Meets or exceeds ANSI specifications



Set Contains:

- (12) SAE Deep Impact Sockets



ATD-2701

13-PC. 3/8" DRIVE 6 POINT METRIC DEEP IMPACT SOCKET SET

Features:

- Manufactured using heat-treated chrome-vanadium steel
- Meets or exceeds ANSI specifications
- Deep Sizes Included & Sold Separately



Set Contains:

- (13) Metric Deep Impact Sockets



ATD-4601A

43-PC. 3/8" DRIVE 6 POINT SAE & METRIC STANDARD & DEEP IMPACT SOCKET SET

Features:

- Manufactured using quality chrome-molybdenum alloy steel
- Standard and Deep Sizes Included & Sold Separately



Set Contains:

- (40) 6 Point SAE & Metric Standard & Deep Impact Sockets
- ATD-2851 - 3" Extension
- ATD-2854 - Universal Joint
- ATD-2856 - 1/4" Hex x 3/8" Drive Adapter



ATD-2250

12-PC. 3/8" DRIVE 6 POINT SAE STANDARD IMPACT SOCKET SET

Features:

- Manufactured using quality chrome-molybdenum alloy steel
- Heat-treated for strength and durability
- Meets or exceeds ANSI specifications

Set Contains:

- (12) 6 Point SAE Standard Impact Sockets



ATD-2301

13-PC. 3/8" DRIVE 6 POINT METRIC STANDARD IMPACT SOCKET SET

Features:

- Manufactured using quality chrome-molybdenum alloy steel
- Meets or exceeds ANSI specifications
- Standard Sizes Included & Sold Separately

Set Contains:

- (13) 6 Point Metric Standard Impact Sockets



ATD-2381

81-PC. 3/8" DRIVE 6 POINT SAE & METRIC IMPACT SOCKET SET

Features:

- Manufactured using quality chrome molybdenum alloy steel
- Heat-treated for strength and durability
- Meets or exceeds ANSI specifications

Set Contains:

- (28) 6 Point SAE & Metric Impact Sockets
- (28) 6 Point SAE & Metric Deep Impact Sockets
- (22) 6 Point Standard Universal Impact Sockets
- ATD-2854 - 3/8" Universal Joint
- ATD-2851 - 3" Extension
- ATD-2856 - 1/4" Hex x 3/8" Square Adapter



ATD-2811

11-PC. 3/8" DR. 4 POINT SAE PIPE PLUG IMPACT SOCKET SET

Features:

- Made of high-quality chrome-moly steel
- Heat-treated for strength and durability

Set Contains:

- (11) 4 Point SAE Pipe Plug Impact Sockets



IMPACT SOCKETS & SETS

ATD-4106

14-PC. 1/2" DRIVE 6 POINT METRIC STANDARD IMPACT SOCKET SET

Features:

- Manufactured using quality Chrome-Molybdenum alloy steel
- Standard Sizes Included & Sold Separately

Set Contains:

- (14) 6 Point Metric Standard Impact Sockets



ATD-4202

13-PC. 1/2" DRIVE 6 POINT SAE STANDARD IMPACT SOCKET SET

Features:

- Manufactured using quality Chrome-Molybdenum alloy steel
- Standard Sizes Included & Sold Separately

Set Contains:

- (13) 6 Point SAE Standard Impact Sockets



ATD-4301

14-PC. 1/2" DRIVE 6 POINT METRIC DEEP IMPACT SOCKET SET

Features:

- Manufactured using quality Chrome-Molybdenum alloy steel
- Deep Sizes Included & Sold Separately

Set Contains:

- (14) 6 Point Metric Deep Impact Sockets



ATD-4401

13-PC. 1/2" DRIVE 6 POINT SAE DEEP IMPACT SOCKET SET

Features:

- Manufactured using quality Chrome-Molybdenum alloy steel
- Deep Sizes Included & Sold Separately

Set Contains:

- (13) 6 Point SAE Deep Impact Sockets



ATD-44219

19-PC. 1/2" DRIVE 6 POINT SAE STANDARD IMPACT SOCKET SET

Features:

- Made of high-quality chrome-moly steel
- Heat-treated for strength and durability
- Standard Sizes Included & Sold Separately

Set Contains:

- (19) 6 Point SAE Standard Impact Sockets



ATD-44326

26-PC. 1/2" DRIVE 6 POINT METRIC DEEP IMPACT SOCKET SET

Features:

- Made of high-quality chrome-moly steel
- Heat-treated for strength and durability
- Deep Sizes Included & Sold Separately

Set Contains:

- (26) 6 Point Metric Deep Impact Sockets



ATD-44419

19-PC. 1/2" DRIVE 6 POINT SAE DEEP IMPACT SOCKET SET

Features:

- Made of high-quality chrome-moly steel
- Meets or exceeds ANSI specifications
- Deep Sizes Included & Sold Separately

Set Contains:

- (19) 6 Point SAE Deep Impact Sockets



ATD-4930

30-PC. 1/2" DRIVE 6 POINT SAE & METRIC DEEP IMPACT SOCKET SET

Features:

- Manufactured using quality chrome molybdenum alloy steel
- Heat-treated for strength and durability
- Meets or exceeds ANSI specifications

Set Contains:

- (13) 6 Point SAE Deep Impact Sockets
- (14) 6 Point Metric Deep Impact Sockets
- ATD-4903 - 3/4" x 13/16" Flip Socket
- ATD-4902 - 19mm x 21mm Flip Socket
- ATD-4702 - 3" Extension



ATD-44126

26-PC. 1/2" DRIVE 6 POINT METRIC STANDARD IMPACT SOCKET SET

Features:

- Made of high-quality chrome-moly steel
- Heat-treated for strength and durability

Set Contains:

- (26) 6 Point Metric Standard Impact Sockets



IMPACT SOCKETS & SETS

ATD-6405 22-PC. 3/4" DRIVE 6 POINT SAE DEEP IMPACT SOCKET SET

Features:

- Manufactured using quality chrome-molybdenum alloy steel
- Deep Sizes Included & Sold Separately

Set Contains:

- (16) 6 Point SAE Deep Impact Sockets
- ATD-6471 - 13/16" Square Budd Wheel Socket
- ATD-6478 - Sliding T-Bar
- ATD-6475 - 5" Extension
- ATD-6480 - 10" Extension
- ATD-6481 - 19-1/2" Quick-Release Ratchet
- ATD-6482 - Ratchet Repair Kit For ATD-6481 Ratchet



ATD-63114 14-PC. 3/4" DRIVE 6 POINT SAE STANDARD IMPACT SET

Features:

- Manufactured using quality chrome molybdenum alloy steel
- Heat-treated for strength and durability
- Meets or exceeds ANSI specifications

Set Contains:

- (14) 6 Point SAE Standard Sockets



ATD-63126 26-PC. 3/4" DRIVE 6 POINT METRIC IMPACT SOCKET SET

Features:

- Manufactured using quality chrome molybdenum alloy steel
- Heat-treated for strength and durability
- Meets or exceeds ANSI specifications

Set Contains:

- (26) 6 Point Metric Impact Sockets



ATD-64114 14-PC. 3/4" DRIVE 6 POINT SAE DEEP IMPACT SOCKET SET

Features:

- Manufactured using quality chrome molybdenum alloy steel
- Heat-treated for strength and durability
- Meets or exceeds ANSI specifications

Set Contains:

- (14) 6 Point SAE Deep Impact Sockets



ATD-63129 29-PC. 3/4" DRIVE 6 POINT SAE IMPACT SOCKET SET

Features:

- Manufactured using quality chrome molybdenum alloy steel
- Heat-treated for strength and durability
- Meets or exceeds ANSI specifications

Set Contains:

- (29) 6 Point SAE Standard Impact Sockets



ATD-64126 26-PC. 3/4" DRIVE METRIC DEEP SOCKET SET

Features:

- Manufactured using quality chrome molybdenum alloy steel
- Heat-treated for strength and durability
- Meets or exceeds ANSI specifications

Set Contains:

- (26) Metric Deep Sockets



ATD-64129 29-PC. 3/4" DRIVE 6 POINT SAE DEEP IMPACT SOCKET SET

Features:

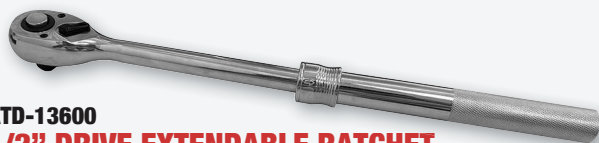
- Manufactured using quality chrome-molybdenum alloy steel
- Heat-treated for strength and durability
- Meets or exceeds ANSI specifications

Set Contains:

- (9) 6 Point SAE Deep Impact Sockets



RATCHETS & RATCHET SETS



ATD-13600

1/2" DRIVE EXTENDABLE RATCHET

Features:

- Drop forged, heat treated chrome vanadium steel
- Quick-release, lock-on drive tang prevents dropped or stuck sockets
- Comfortable, non-slip soft grip
- Corrosion-resistant chrome plated finish
- 72-Tooth ratcheting system
- Meets or exceeds ANSI specifications



Specifications:

- Drive Size: 1/2" Reversible
- Handle Extends: 11.5" to 16.5"



PLT-99680

1/4" DRIVE SUPER STRONG FLEX HEAD I-BEAM RATCHET

Features:

- I-Beam design allows handle to flex under extreme torque
- Engineered to withstand loads up to 90 ft.-lbs.
- 72 tooth 13" ratchet provides 5° swing arc
- Closed head design keeps out dust and debris
- +/-15 degree flex head allows access to hard-to-reach places



**PLATINUM
TECH**

PLT-99600

2-PC. 120 TOOTH RATCHET SET

Features:

- 120 tooth ratcheting wrench provides high torque requiring only 3° swing arc
- Slim profile combined with tear-drop head provides easy access in narrow areas
- Closed head design keeps out dust and debris
- Chrome vanadium steel for strength and durability
- Full polish chrome finish for superior corrosion resistance
- Special heat treatment process provides high strength and durability
- Meets or exceeds ASME specifications for long life
- Limited lifetime warranty against defects in workmanship and materials



Set Contains:

- PLT-99601 - 1/4" Ratchet (8" overall length)
- PLT-99602 - 3/8" Ratchet (11" overall length)

**PLATINUM
TECH**



PLT-99681

3/8" DRIVE SUPER STRONG FLEX HEAD I-BEAM RATCHET

Features:

- I-Beam design allows handle to flex under extreme torque
- Engineered to withstand loads up to 300 ft.-lbs.
- 72 tooth 16" ratchet provides 5° swing arc
- Closed head design keeps out dust and debris
- +/-15 degree flex head allows access to hard-to-reach places



**PLATINUM
TECH**



PLT-99603

1/2" DRIVE 120 TOOTH RATCHET

Features:

- 120 tooth 15" ratchet provides high torque requiring only 3 degrees of swing arc
- Slim profile combined with teardrop head provides easy access in narrow areas
- Closed head design keeps out dust and debris
- Chrome vanadium steel for strength and durability
- Full polish chrome finish for superior corrosion resistance
- Special heat treatment process provides high strength and durability
- Meets or exceeds ANSI specifications for long life

**PLATINUM
TECH**



PLT-99683

20" EXTENSION BAR

Features:

- Replacement handle extension for (PLT-99682) 1/2" Dr. Super Strong Flex-Head Ratchet Set
- Handle extension locks into ratchet for secure use
- Extends ratchet length from 25" to 44.3"



**PLATINUM
TECH**



PLT-99682

1/2" DRIVE SUPER STRONG FLEX HEAD I-BEAM RATCHET SET

1/2" Drive Super Strong Flex Head I-Beam Ratchet Features:

- I-Beam design allows the handle to flex under extreme torque
- Engineered to withstand loads up to 700 ft.-lbs.
- 72 tooth ratchet provides 5° swing arc
- Closed head design keeps out dust and debris
- +/-15 degree flex head allows access to hard-to-reach places



20" Extension Bar Features:

- Handle extension locks into ratchet for secure use
- Extends ratchet length from 25" to 44.3"

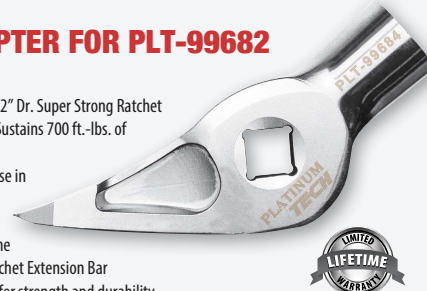
**PLATINUM
TECH**

PLT-99684

PRYBAR ADAPTER FOR PLT-99682

Features:

- Converts your PLT-99682 1/2" Dr. Super Strong Ratchet into an indexable pry bar - Sustains 700 ft.-lbs. of torque
- Compact design allows for use in tight spaces
- Can be used as a conventional pry bar with the 1/2" Drive Super Strong Ratchet Extension Bar
- Chrome-molybdenum steel for strength and durability
- Meets or exceeds ANSI specifications



**PLATINUM
TECH**

PLT-99400 14-PC. SAE ANGLE WRENCH SET

Features:

- Designed slightly shorter for better access to confined and limited spaces
- Double open ends are offset at 15° and 60° angles to permit the use of onewrench in four different positions or turning angles
- Chrome vanadium steel for strength and durability
- Meets or exceeds ANSI standards
- Limited lifetime warranty against defects in workmanship and materials
- Includes a durable nylon roll pouch with handles and straps

Set Contains:

- (14) SAE Angle Wrenches



**PLATINUM
TECH**

PLT-99420 14-PC. METRIC ANGLE WRENCH SET

Features:

- Designed slightly shorter for better access to confined and limited spaces
- Double open ends are offset at 15° and 60° angles to permit the use of onewrench in four different positions or turning angles
- Chrome vanadium steel for strength and durability
- Meets or exceeds ANSI standards
- Limited lifetime warranty against defects in workmanship and materials
- Includes a durable nylon roll pouch with handles and straps

Set Contains:

- (14) Metric Angle Wrenches



**PLATINUM
TECH**

ATD-401 24" CHAIN WRENCH

Features:

- 21-1/2" chain with 6-3/4" diameter capacity for use on objects of any shape
- Chain wrenches are ideal for use in tight spaces

Specifications:

- Rated pipe capacity: 2"
- Actual overall diameter capacity: 6-3/4"
- Chain length: 21-1/2"



ATD-1014 14-PC. SAE RAISED PANEL COMBINATION WRENCH SET

Features:

- 12-point box end can be used on either a hexagonal or a square nut
- Drop forged carbon steel
- Meets ANSI specifications for torque and hardness
- 15-degree offset end and 12-point box end

Set Contains:

- (14) SAE 12 Point Raised Panel Wrenches
- Durable nylon roll pouch



ATD-1115 15 PC. METRIC RAISED PANEL COMBINATION WRENCH SET

Features:

- Combination wrenches combine the functions of both open-end and box-end wrenches
- High quality drop-forged steel
- 12-point box end can be used on either a hexagonal or a square nut
- 15-degree offset box head for better access to tight spaces and knuckle clearance
- Meets or exceeds ANSI Standards

Set Contains:

- (15) Metric 12 Point Raised Panel Wrenches
- Durable nylon roll pouch



ATD-1010 10-PC. 12 POINT SAE JUMBO RAISED PANEL COMBINATION WRENCH SET

Features:

- 12-Point, 15-degree offset box head for better access in tight spaces and knuckle clearance
- 12-point box end can be used on either a hexagonal or a square nut
- Meets ANSI specifications for torque and hardness

Set Contains:

- (10) SAE 12 Point Jumbo Raised Panel Wrenches
- Durable nylon roll pouch



ATD-1005 4-PC. 12 POINT SAE JUMBO RAISED PANEL COMBINATION WRENCH SET

Features:

- 12-point box end can be used on either a hexagonal or a square nut
- 15-degree offset end and 12-point box end
- Meets ANSI specifications for torque and hardness

Set Contains:

- ATD-6066 - 2-1/8" 12 Point Jumbo Wrench
- ATD-6068 - 2-1/4" 12 Point Jumbo Wrench
- ATD-6070 - 2-3/8" 12 Point Jumbo Wrench
- ATD-6072 - 2-1/2" 12 Point Jumbo Wrench
- Vinyl roll pouch included



ATD-1110 10-PC. 12 POINT METRIC JUMBO RAISED PANEL COMBINATION WRENCH SET

Features:

- 12-point box end can be used on either a hexagonal or a square nut
- Meets ANSI specifications for torque and hardness
- 15-degree offset end and 12-point box end

Set Contains:

- (10) 12 Point Metric Jumbo Raised Panel Combination Wrenches
- Vinyl roll pouch included



WRENCH SETS

PLT-99570

17-PC. METRIC LONG PATTERN COMBINATION WRENCH SET

Features:

- 12-Point, 15" offset box head for better access in tight spaces and knuckle clearance
- 12-point box end can be used on either a hexagonal or a square nut
- Meets or exceeds ANSI Standards
- Limited lifetime warranty against defects in workmanship and materials

Set Contains:

- (17) Metric Long Pattern Combination Wrenches
- Durable nylon roll pouch



**PLATINUM
TECH**

PLT-99550

17-PC. SAE LONG PATTERN COMBINATION WRENCH SET

Features:

- 12-Point, 15" offset box head for better access in tight spaces and knuckle clearance
- 12-point box end can be used on either a hexagonal or a square nut
- Meets or exceeds ANSI Standards
- Limited lifetime warranty against defects in workmanship and materials

Set Contains:

- (17) SAE Long Pattern Combination Wrenches
- Durable nylon roll pouch



**PLATINUM
TECH**

ATD-1070

14-PC. 12 POINT SAE LONG PATTERN WRENCH SET

Set Contains:

- (14) SAE 12 Point Long Pattern Wrenches
- Vinyl roll pouch included (ATD-1070P)



PLT-99505

11-PC. SAE STUBBY COMBINATION WRENCH SET

Features:

- Combination wrenches combine the functions of both open-end and box-end wrenches
- 12-point box end can be used on either a hexagonal or a square nut
- Chrome vanadium steel for strength and durability
- Meets or exceeds ANSI standards
- Limited lifetime warranty against defects in workmanship and materials

Set Contains:

- (11) SAE Stubby Combination Wrenches
- Custom blow-molded tray



**PLATINUM
TECH**

PLT-99525

10-PC. METRIC STUBBY COMBINATION WRENCH SET

Features:

- Combination wrenches combine the functions of both open-end and box-end wrenches
- 12-point box end can be used on either a hexagonal or a square nut
- Chrome vanadium steel for strength and durability
- Meets or exceeds ANSI standards
- Limited lifetime warranty against defects in workmanship and materials

Set Contains:

- (10) Metric Stubby Combination Wrenches
- Custom blow-molded tray



**PLATINUM
TECH**

PLT-99450

11-PC. SAE 3/8" DRIVE CROWFOOT WRENCH SET

Features:

- Chrome vanadium steel for strength and durability
- Meets or exceeds ANSI standards
- Limited lifetime warranty against defects in workmanship and materials

Set Contains:

- (11) SAE Crowfoot Wrenches (3/8"-1")



**PLATINUM
TECH**

PLT-99370

15-PC. SAE 1/2" DRIVE JUMBO CROWFOOT WRENCH SET

Features:

- Crowfoot wrenches work in tight spaces where ordinary sockets and wrenches cannot
- Drop forged carbon steel for strength and durability
- Full polish chrome finish for superior corrosion resistance
- Meets or exceeds ANSI standards
- Limited lifetime warranty against defects in workmanship and materials

Set Contains:

- (15) SAE Jumbo Crowfoot Wrenches (1"-2")



**PLATINUM
TECH**

PLT-99470

10-PC. METRIC 3/8" DRIVE CROWFOOT WRENCH SET

Features:

- Chrome vanadium steel for strength and durability
- Meets or exceeds ANSI standards
- Limited lifetime warranty against defects in workmanship and materials

Set Contains:

- (10) Metric Crowfoot Wrenches (10-19mm)



**PLATINUM
TECH**

PLT-99380 17-PC. METRIC 1/2" DRIVE JUMBO CROWFOOT WRENCH SET

Features:

- Crowfoot wrenches work in tight spaces where ordinary sockets and wrenches cannot
- Drop forged carbon steel for strength and durability
- Full polish chrome finish for superior corrosion resistance
- Meets or exceeds ANSI standards
- Limited lifetime warranty against defects in workmanship and materials

Set Contains:

- (17) Metric Jumbo Crowfoot Wrenches (20-46mm)



PLATINUM
TECH

PLT-99710 7-PC. METRIC FLARE NUT WRENCH SET

Features:

- Flare nut design for better grip without slipping
- Ideal for use on hex nuts made of softer materials
- 15° offset wrench heads
- Chrome vanadium steel for strength and durability
- Meets or exceeds ANSI standards
- Limited lifetime warranty against defects in workmanship and materials

Set Contains:

- (7) Metric Flare Nut Wrenches



PLATINUM
TECH

PLT-99310 8-PC. SAE 3/8" DRIVE FLARE NUT CROWFOOT WRENCH SET

Features:

- Meets or exceeds ANSI standards
- Limited lifetime warranty against defects in workmanship and materials

Set Contains:

- (8) SAE Flare Nut Crowfoot Wrenches (3/8"-7/8")



PLATINUM
TECH

PLT-99320 10-PC. METRIC 3/8" DRIVE FLARE NUT CROWFOOT WRENCH SET

Features:

- Meets or exceeds ANSI standards
- Limited lifetime warranty against defects in workmanship and materials

Set Contains:

- (10) Metric Flare Nut Crowfoot Wrenches (10-19mm)



PLATINUM
TECH



PLT-99700

7-PC. SAE FLARE NUT WRENCH SET

Features:

- Flare nut design for better grip without slipping
- Opening in the head gives greater access to fittings used on tubing
- Ideal for use on hex nuts made of softer materials
- 15° offset wrench heads
- Full polish chrome finish for superior corrosion resistance
- Meets or exceeds ANSI standards
- Limited lifetime warranty against defects in workmanship and materials

Set Contains:

- (7) SAE Flare Nut Wrenches



PLATINUM
TECH

ATD-425

4-PC. ADJUSTABLE WRENCH SET

Set Contains:

- ATD-426 - 6" Adjustable Wrench
- ATD-427 - 8" Adjustable Wrench
- ATD-428 - 10" Adjustable Wrench
- ATD-429 - 12" Adjustable Wrench



INDIVIDUAL ADJUSTABLE WRENCHES (NOT SOLD IN SETS)

- ATD-415 - 15" Adjustable Wrench
- ATD-418 - 18" Adjustable Wrench
- ATD-424 - 24" Adjustable Wrench

ATD-625

4-PC. HEAVY-DUTY PIPE WRENCH SET

Set Contains:

- ATD-612 - 12" Pipe Wrench - Jaw Capacity 1.5"
- ATD-614 - 14" Pipe Wrench - Jaw Capacity 2"
- ATD-618 - 18" Pipe Wrench - Jaw Capacity 2.36"
- ATD-624 - 24" Pipe Wrench - Jaw Capacity 3"

INDIVIDUAL PIPE WRENCHES (NOT SOLD IN SETS)

- ATD-608 - 8" Pipe Wrench



WRENCH SETS

PLT-99650

5-PC. XL REVERSIBLE RATCHETING WRENCH SET WITH 10 METRIC SIZES

Features:

- 72-Tooth ratcheting system for high torque & 5° swing arc for operation in tight areas
- 180° flex feature & extra-long reach allows access to hard-to-reach places

Set Contains:

- PLT-99658 - 8mmx10mm - 12.41" Long
- PLT-99662 - 12mmx14mm - 15.56" Long
- PLT-99663 - 13mmx15mm - 16.07" Long
- PLT-99666 - 16mmx18mm - 16.55" Long
- PLT-99667 - 17mmx19mm - 18.12" Long

PLATINUM
TECH



ATD-6509

9-PC. SAE RATCHETING FLEXIBLE HEAD EXTRA LONG WRENCH SET

Features:

- Each wrench features both a ratcheting flexible head box-end and a non-ratcheting zero-degree offset box-end for maximum versatility
- 72-tooth ratchet mechanism provides smooth and effortless operation

Set Contains:

- ATD-65101 - 5/16" - 11.125" Long
- ATD-65102 - 11/32" - 11.12" Long
- ATD-65103 - 3/8" - 12.25" Long
- ATD-65104 - 7/16" - 12.75" Long
- ATD-65105 - 1/2" - 14.625" Long
- ATD-65106 - 9/16" - 15.625" Long
- ATD-65107 - 5/8" - 16.375" Long
- ATD-65108 - 11/16" - 16.625" Long
- ATD-65109 - 3/4" - 17.625" Long



PLT-99750

4-PC. XL REVERSIBLE RATCHETING WRENCH SET WITH 8 SAE SIZES

Features:

- Offset box end gear provides more surface contact and access to recessed fasteners
- 72-Tooth ratcheting system for high torque & 5° swing arc for operation in tight areas
- Sliding switch button for quick change ratcheting direction
- 180° flex feature & extra-long reach allows access to hard-to-reach places

Set Contains:

- PLT-99755 - 5/16" x 3/8" - 12.41" Long
- PLT-99757 - 7/16" x 1/2" - 15.56" Long
- PLT-99759 - 9/16" x 5/8" - 16.07" Long
- PLT-99761 - 11/16" x 3/4" - 18.12" Long

PLATINUM
TECH



ATD-6510

10-PC. METRIC RATCHETING FLEXIBLE HEAD EXTRA LONG WRENCH SET

Features:

- 72-tooth ratchet mechanism provides smooth and effortless operation

Set Contains:

- ATD-65110 - 10mm - 12.186" Long
- ATD-65111 - 11mm - 12.813" Long
- ATD-65112 - 12mm - 13.625" Long
- ATD-65113 - 13mm - 14.688" Long
- ATD-65114 - 14mm - 15.625" Long
- ATD-65115 - 15mm - 16.125" Long
- ATD-65116 - 16mm - 12.375" Long
- ATD-65117 - 17mm - 16.75" Long
- ATD-65118 - 18mm - 17.188" Long
- ATD-65119 - 19mm - 17.625" Long



PLT-99652

2-PC. XL REVERSIBLE RATCHETING WRENCH SET - 4 METRIC SIZES

Features:

- Offset box end gear provides more surface contact and access to recessed fasteners
- 72-Tooth ratcheting system for high torque & 5° swing arc for operation in tight areas
- 180° flex feature & extra-long reach allows access to hard-to-reach places
- High-polish, chrome-plated chrome vanadium steel for good looks and exceptional strength

Set Contains:

- PLT-99653 - 21mm x 22mm - 19.2" Long
- PLT-99654 - 24mm x 25mm - 20.1" Long

PLATINUM
TECH



PLT-99730

3/8" DRIVE 13-PC. METRIC RATCHETING CROWFOOT SET

Features:

- Spline drive works on six types of fasteners (Spline, 6-Point, 12-Point, Star, Square and Rounded)
- 72-tooth gear for micro ratcheting in tight access spaces
- Sliding switch button for quick change ratcheting direction
- Chrome vanadium steel for strength and durability
- Meets or exceeds ANSI standards

Set Contains:

- (12) Metric Ratcheting Crowfoot Wrenches
- Custom blow-molded tray
- PLT-99729 - 10" Locking Extension

PLATINUM
TECH



PLT-99655

REVERSIBLE XL RATCHET WRENCH 27MM X 30MM

Features:

- 27mm x 30mm - 23.5" Long
- Offset box end gear provides more surface contact and access to recessed fasteners
- 72-Tooth ratcheting system for high torque & 5° swing arc for operation in tight areas
- Sliding switch button for quick change ratcheting direction
- 180° flex feature & extra-long reach allows access to hard-to-reach places
- High-polish, chrome-plated chrome vanadium steel for good looks and exceptional strength



PLATINUM
TECH



PLT-99720

3/8" DRIVE 9-PC. SAE RATCHETING CROWFOOT SET

Features:

- Spline drive works on six types of fasteners (Spline, 6-Point, 12-Point, Star, Square and Rounded)
- 72-tooth gear for micro ratcheting in tight access spaces
- Sliding switch button for quick change ratcheting direction
- Chrome vanadium steel for strength and durability
- Meets or exceeds ANSI standards

Set Contains:

- (8) SAE Ratcheting Crowfoot Wrenches
- PLT-99729 - 10" Locking Extension
- Custom blow-molded tray

PLATINUM
TECH





ATD-12555 1/2" DRIVE 5-IN-1 PRE-SET TORQUE WRENCH

Features:

- (5) pre-set torque values: 80, 100, 120, 140 and 160 ft.-lbs
- Fast and easy to use
- Heat treated steel shaft
- Comfort grip handle

Specifications:

- Length: 18.5"
- Accurate to within $\pm 4\%$
- Meets ISO 6789, U.S. Fed. GGG-W-686 and ANSI Spec. B107.14M



PLT-12250 1/2" DRIVE SPLIT BEAM TORQUE WRENCH

Features:

- Certified DIN ISO accurate to $\pm 4\%$ CW (specific calibration results at the time of manufacture will be shown on the included certificate)
- Serialized Certificate of Calibration - each wrench is calibrated according to ASME B107.300-2010 standard; detailed test results are recorded on the included certificate
- Meets or exceeds ANSI specifications
- Custom blow-molded storage case with instructions and calibration certificate

Specifications:

- Drive Type: 1/2", ratcheting
- Accuracy: $\pm 4\%$
- Range: 50-250 ft.-lbs.
- Overall Length: 24.2"
- Increments: 5 ft.-lbs.

**PLATINUM
TECH**



ATD-2504 1/2" DRIVE 30-250 FT.-LBS. MICROMETER TORQUE WRENCH

Features:

- Certified to meet the accuracy in specifications: ASME B107.14-2004, GGG-W-686, Type 2, Class A Style 1, 2 and ISO 6789
- Individually serialized with matching certificate of calibration traceable to N.I.S.T.
- Comes in blow molded storage case with instructions and calibration certificate
- Made in the USA with US and foreign parts



Specifications:

- Length: 24.50"
- Accuracy: $\pm 4\%$ CW $\pm 4\%$ CCW of indicated value, CW, from 20% to 100% of full scale



ATD-2505 3/4" DRIVE 100-600 FT.-LBS. MICROMETER TORQUE WRENCH

Features:

- Certified to meet the accuracy in specifications: ASME B107.14-2004, GGG-W-686, Type 2, Class A Style 1, 2 and ISO 6789
- Individually serialized with matching certificate of calibration traceable to N.I.S.T.
- Comes in blow molded storage case with instructions and calibration certificate
- Made in the USA with US and foreign parts



Specifications:

- Length: 42"
- Accuracy: $\pm 4\%$ CW $\pm 4\%$ CCW of indicated value, CW, from 20% to 100% of full scale



ATD-12500A 1/4" DRIVE 40-200 IN.-LBS. MICROMETER TORQUE WRENCH

Features:

- Knurled handle for non-slip grip
- 36-tooth gear
- Meets ISO 6789 specifications
- Calibrated on test equipment complying with ASME B107.300-2010 accuracy requirements
- Comes in blow molded storage case with instructions and calibration certificate

Specifications:

- 40-200 in.-lbs.
- Length: 11-3/4"
- 5.1 - 23.2 NM
- Accuracy: $\pm 4\%$ CW from 20% to 100% of full scale



ATD-12501A 3/8" DRIVE 50-250 IN.-LBS. MICROMETER TORQUE WRENCH

Features:

- Knurled handle for non-slip grip
- 36-tooth gear
- Meets ISO 6789 specifications
- Calibrated on test equipment complying with ASME B107.300-2010 accuracy requirements
- Comes in blow molded storage case with instructions and calibration certificate

Specifications:

- 50-250 in.-lbs.
- Length: 11-3/4"
- 6.2 - 28.8 NM
- Accuracy: $\pm 4\%$ CW from 20% to 100% of full scale



ATD-12502A 3/8" DRIVE 20-100 FT.-LBS. MICROMETER TORQUE WRENCH

Features:

- Knurled handle for non-slip grip
- 36-tooth gear
- Meets ISO 6789 specifications
- Calibrated on test equipment complying with ASME B107.300-2010 accuracy requirements
- Comes in blow molded storage case with instructions and calibration certificate

Specifications:

- 20-100 in.-lbs.
- Length: 16-1/2"
- 30.5 - 138.9 NM
- Accuracy: $\pm 4\%$ CW from 20% to 100% of full scale



ATD-12504A 1/2" DRIVE 50-250 FT.-LBS. MICROMETER TORQUE WRENCH

Features:

- Knurled handle for non-slip grip
- 36-tooth gear
- Meets ISO 6789 specifications
- Calibrated on test equipment complying with ASME B107.300-2010 accuracy requirements
- Comes in blow molded storage case with instructions and calibration certificate

Specifications:

- 50-250 in.-lbs.
- Length: 25-1/2"
- 74.6 - 345.7 NM
- Accuracy: $\pm 4\%$ CW from 20% to 100% of full scale



ATD-12505A

3/4" DRIVE 120-600 FT.-LBS. MICROMETER TORQUE WRENCH

Features:

- Knurled handle for non-slip grip
- 36-tooth gear
- Meets ISO 6789 specifications
- Calibrated on test equipment complying with ASME B107.300-2010 accuracy requirements
- Comes in blow molded storage case with instructions and calibration certificate

Specifications:

- 120-600 in.-lbs. • Length: 41-1/2"
- 183 - 833.7 NM • Accuracy: $\pm 4\%$ CW from 20% to 100% of full scale



PLT-12600

3/4" DRIVE 600 FT.-LBS. BREAK-BACK STYLE TORQUE WRENCH

Features:

- Break-back style wrenches provide a large break angle, to prevent the possibility of over-torquing
- Ideal for noisy and difficult working conditions
- Meets or exceeds ANSI specifications
- Comes in blow-molded storage case with instructions

**PLATINUM
TECH**

Specifications:

- 3/4" square drive • 200-800 Nm • Length: 49.21" • Weight: 29.90 lbs.
- 150-600 ft.-lbs. • 3/4" Break Back • Torque Accuracy: $\pm 4\%$



PLT-12750

1" DRIVE 750 FT.-LBS. BREAK-BACK STYLE TORQUE WRENCH

Features:

- Break-back style wrenches provide a large break angle, to prevent the possibility of over-torquing
- Ideal for noisy and difficult working conditions
- Meets or exceeds ANSI specifications
- Comes in blow-molded storage case with instructions

**PLATINUM
TECH**

Specifications:

- 1" square drive • 300-1000 Nm • Length: 57.68" • Weight: 28.66 lbs.
- 200-750 ft.-lbs. • 1" Break Back • Torque Accuracy: $\pm 4\%$

ATD-813

3-PC. 11" RING NOSE PLIERS SET

Features:

- Great for pulling spark plug wires and hoses
- Heat-treated, drop forged corrosion resistant steel
- Comfort grip handles reduce hand fatigue and slippage
- Serrated jaws for more gripping power
- Pliers available individually

Set Contains:

- ATD-845 - 5/16" diameter ring nose pliers
- ATD-846 - 1/2" diameter ring nose pliers
- ATD-847 - 3/4" diameter ring nose pliers



ATD-814

4-PC. 11" NEEDLE NOSE PLIERS SET

Features:

- Heat-treated, drop forged corrosion resistant steel for strength and durability
- Comfort grip handles reduce hand fatigue and slippage
- Precision machined jaws prevent slipping on work piece
- Pliers available individually

Set Contains:

- ATD-815 - Straight needle nose pliers • ATD-817 - 45° needle nose pliers
- ATD-816 - 90° needle nose pliers • ATD-818 - S-type offset needle nose pliers



ATD-827

7-PC. MECHANIC'S PLIERS SET

Features:

- Pliers available individually

Set Contains:

- ATD-806 - 6" needle nose pliers with side cutter
- ATD-858 - 8" HD diagonal cutting pliers
- ATD-838 - 8" linesman pliers
- ATD-828 - 8" slip joint pliers
- ATD-820 - 10" crimping & cutting pliers
- ATD-835 - 10" tongue & groove pliers
- ATD-836 - 12" tongue & groove pliers



ATD-863

3-PC. 16" NEEDLE NOSE PLIERS SET

Features:

- Heat-treated, drop forged corrosion resistant steel for strength and durability
- Comfort grip handles reduce hand fatigue and slippage
- Precision machined jaws prevent slipping on work piece
- Pliers available individually

Set Contains:

- ATD-864 - Straight needle nose pliers
- ATD-865 - 90° Needle nose pliers
- ATD-866 - 45° Needle nose pliers



ATD-824

4-PC. PLIERS SET

Features:

- Heat-treated, drop forged corrosion resistant steel for strength and durability
- Comfort grip handles reduce hand fatigue and slippage
- Precision machined jaws prevent slipping on work piece
- Pliers available individually

Set Contains:

- ATD-806 - 6" needle nose pliers with side cutter
- ATD-858 - 8" HD diagonal cutting pliers
- ATD-828 - 8" slip joint pliers
- ATD-835 - 10" tongue & groove pliers



PLT-99793 3-PC. LOCK RING PLIERS SET

Features:

- Removes, installs and spreads lock rings without holes
- Spring action closes jaws
- Use on brakes, transmissions, differentials, etc...
- Made in the USA

Set Contains:

- PLT-99794 - Straight Tip Lock Ring Pliers
- PLT-99795 - Right Angle Tip Lock Ring Pliers
- PLT-99796 - Bent Tip Lock Ring Pliers



**PLATINUM
TECH**

PLT-99913 6-PC. COMBINATION INTERNAL/ EXTERNAL SNAP RING PLIERS SET

Features:

- Pliers are convertible for use on internal and external snap rings
- Made in the USA

Set Contains:

- PLT-99951 - .038" Straight Tip Pliers
- PLT-99953 - .038" 90° Tip Pliers
- PLT-99954 - .047" Straight Tip Pliers
- PLT-99956 - .047" 90° Tip Pliers
- PLT-99957 - .070" Straight Tip Pliers
- PLT-99962 - .070" 90° Tip Pliers



**PLATINUM
TECH**



ATD-5380 RADIATOR HOSE PINCH-OFF PLIERS

Features:

- Eliminates necessity of draining cooling system when installing thermostats and water pumps on all pressurized cooling systems
- Works on heater and radiator hoses
- Jaws swivel for parallel clamping and positive shutoff
- Automatic locking ratchet
- Total Length: 9.5"
- Length of Jaws: 2.5"

ATD-5465 3-PC. HOSE PINCH OFF PLIERS SET

Features:

- Contains: 8", 10" and 12" Hose Pinch Off Pliers
- Shuts-off flow through vacuum lines, fuel lines, coolant lines, etc.
- Ratchet mechanism holds pivoting jaws tightly in place
- Heavy-duty swivel jaws pivot to assure parallel pinching
- Max Openings: 8" - 1" Max Opening; 10" - 1" Max Opening; 12" - 1-3/8" Max Opening



PLT-99911 2-PC. COMBINATION INTERNAL & EXTERNAL SNAP RING PLIERS SET

Features:

- Tip size: .120", 0", 45° and 90°
- Spring ratchet locking mechanism securely holds against snap ring tension
- Thumb release allows for smooth and controlled tension release
- 16" Length pliers with cushion grips for comfort
- Replaceable tips
- Made in the USA



Set Contains:

- PLT-99909 - Internal ring size range: 3-1/16" - 6-1/4" (78mm - 159mm)
- PLT-99910 - External ring size range: 3-1/2" - 6-1/2" (89mm - 165mm)

**PLATINUM
TECH**

PLT-99915 12-PC. COMBINATION INTERNAL/ EXTERNAL SNAP RING PLIERS SET

Features:

- Pliers are convertible for use on internal and external snap rings
- Made in the USA

Set Contains:

- PLT-99951 - .038" Straight Tip Pliers
- PLT-99952 - .038" 45° Tip Pliers
- PLT-99953 - .038" 90° Tip Pliers
- PLT-99954 - .047" Straight Tip Pliers
- PLT-99955 - .047" 45° Tip Pliers
- PLT-99956 - .047" 90° Tip Pliers
- PLT-99957 - .070" Straight Tip Pliers
- PLT-99958 - .070" 45° Tip Pliers
- PLT-99959 - .070" 90° Tip Pliers
- PLT-99960 - .090" Straight Tip Pliers
- PLT-99961 - .090" 45° Tip Pliers
- PLT-99962 - .090" 90° Tip Pliers
- Molded storage case included



**PLATINUM
TECH**



ATD-8579 BODY CLIP PLIERS

Features:

- These specially designed & patented pliers will remove any clip found on trim, bumpers, etc.
- Steel levers enclosed in plastic handles, prevent scratches & nicks in paint
- Tips have special angle & size that make them the most versatile tool in the clip removal category
- No need to buy (3) pliers for different applications
- A must for body technicians

SPECIALTY PLIERS • SCREWDRIVER & NUT DRIVER SETS

ATD-1996 HEAVY-DUTY AUTOMATIC WIRE STRIPPER

Features:

- Self-adjusting for wire from 10-26 AWG
- Wire cutter for 10-22 AWG
- Crimps 10-22 AWG insulated terminals and 4-22 AWG non-insulated terminals
- Crimps 4-8mm ignition terminals
- Cuts and strips 10-24 AWG copper or aluminum wire
- Micro adjustment knob for smaller than 24 AWG wire



ATD-912 HEAVY-DUTY TUBING BENDER PLIERS

Features:

- Bends 3/16", 1/4", 5/16" and 3/8" diameter copper and steel tubing without kinking or collapsing
- Includes (2) roller adapters



ATD-5472 3-IN-1 180° TUBING BENDER

Features:

- Capable of making 180° bends in copper, brass, aluminum and steel tubing
- Just one tool works on (3) sizes of tubing: 1/4", 5/16" and 3/8"

ATD-6265 8-PC. SCREWDRIVER SET

Features:

- Nickel-chrome plated shanks with vapor blasted tips for strong, peel-resistant surface
- Molded plastic handles resist penetration of solvents, gasoline and oil for longer tool life

Set Contains:

- 3/16" x 3" Slotted
- 1/4" x 1-1/2" Slotted
- 1/4" x 4" Slotted
- 5/16" x 6" Slotted
- 3/8" x 8" Slotted
- #1 x 3" Phillips
- #2 x 1-1/2" Phillips
- #2 x 4" Phillips
- Molded storage tray



ATD-6255 13-PC. PROFESSIONAL SCREWDRIVER SET

Features:

- Hardened, magnetized tips
- Ergonomically designed soft grip handles
- Bolster holes for extra leverage
- Molybdenum vanadium steel shafts
- Size identification on handles

Set Contains:

- ATD-6271 - 1/8" x 3" Slotted
- ATD-6272 - 3/16" x 4" Slotted
- ATD-6273 - 3/16" x 6" Slotted
- ATD-6275 - 1/4" x 1-1/2" Slotted
- ATD-6278 - 1/4" x 6" Slotted
- ATD-6282 - 3/8" x 10" Slotted
- ATD-6283 - #0 x 3" Phillips
- ATD-6284 - #1 x 3" Phillips
- ATD-6285 - #1 x 4" Phillips
- ATD-6286 - #2 x 1-1/2" Phillips
- ATD-6288 - #2 x 6" Phillips
- ATD-6289 - T15 x 4" Star
- ATD-6290 - T20 x 4" Star



ATD-6257 7-PC. NUT DRIVER SET - SAE

Features:

- Ergonomically designed, soft grip handles
- Chrome vanadium steel shafts
- Bolster holes for extra leverage
- Hollow shaft to allow clearance for bolts
- Size identification on shafts

Set Contains:

- ATD-6303 - 3/16"
- ATD-6304 - 1/4"
- ATD-6305 - 5/16"
- ATD-6306 - 11/32"
- ATD-6307 - 3/8"
- ATD-6308 - 7/16"
- ATD-6309 - 1/2"



ATD-6256 18-PC. SCREWDRIVER SET

Features:

- Hardened, magnetized tips
- Ergonomically designed soft grip handles
- Bolster holes for extra leverage
- Molybdenum vanadium steel shafts
- Size identification on handles

Set Contains:

- ATD-6271 - 1/8" x 3" Slotted
- ATD-6272 - 3/16" x 4" Slotted
- ATD-6273 - 3/16" x 6" Slotted
- ATD-6274 - 1/8" x 6" Slotted
- ATD-6275 - 1/4" x 1-1/2" Slotted
- ATD-6277 - 1/4" x 4" Slotted
- ATD-6278 - 1/4" x 6" Slotted
- ATD-6279 - 1/4" x 8" Slotted
- ATD-6280 - 5/16" x 6" Slotted
- ATD-6282 - 3/8" x 10" Slotted
- ATD-6283 - #0 x 3" Phillips
- ATD-6285 - #1 x 4" Phillips
- ATD-6286 - #2 x 1-1/2" Phillips
- ATD-6287 - #2 x 4" Phillips
- ATD-6288 - #2 x 6" Phillips
- ATD-6289 - T15 x 4" TORX®
- ATD-6290 - T20 x 4" TORX®



ATD-6258 7-PC. NUT DRIVER SET - METRIC

Features:

- Ergonomically designed, soft grip handles
- Chrome vanadium steel shafts
- Bolster holes for extra leverage
- Hollow shaft to allow clearance for bolts
- Size identification on shafts

Set Contains:

- ATD-6316 - 6mm
- ATD-6310 - 7mm
- ATD-6311 - 8mm
- ATD-6312 - 9mm
- ATD-6313 - 10mm
- ATD-6314 - 11mm
- ATD-6315 - 12mm



SCREWDRIVER & NUT DRIVER SETS • HEX & STAR KEY SETS

ATD-574 10-PC. SAE T-HANDLE HEX KEY SET

Features:

- 3-3/4" Shafts are made from high quality steel
- Plastic handle grips for comfort & increased turning power
- Custom steel storage rack included

Sizes Included:

- 3/32" • 3/16"
- 7/64" • 7/32"
- 1/8" • 1/4"
- 9/64" • 5/16"
- 5/32" • 3/8"



ATD-575 10-PC. METRIC T-HANDLE HEX KEY SET

Features:

- Shafts are made from high quality steel
- Plastic handle grips for comfort & increased turning power
- Custom steel storage rack included

Sizes Included:

- 2mm • 5mm
- 2.5mm • 5.5mm
- 3mm • 6mm
- 4mm • 8mm
- 4.5mm • 10mm



ATD-576 10-PC. STAR T-HANDLE SET

Features:

- Shafts are made from high quality steel
- Plastic handle grips for comfort & increased turning power
- Custom steel storage rack included

Sizes Included:

- T7 • T20
- T8 • T25
- T9 • T27
- T10 • T30
- T15 • T40



ATD-6198 22-PC. SCREWDRIVER WITH 16 PC. BIT SET

Set Contains:

- 1/8" x 3" Slotted
- 1/8" x 4" Slotted
- 1/8" x 4" Slotted with Screw Holder
- 3/16" x 3" Slotted
- 3/16" x 4" Slotted
- 1/4" x 1-1/2" Slotted
- 1/4" x 4" Slotted with Hex Bolster
- 1/4" x 6" Slotted with Hex Bolster
- 5/16" x 8" Slotted with Hex Bolster
- 3/8" x 10" Slotted
- #0 x 3" Phillips
- #1 x 3" Phillips
- #2 x 1-1/2" Phillips
- #2 x 4" Phillips with Hex Bolster
- #2 x 6" Phillips with Hex Bolster
- T10 Star Driver
- T15 Star Driver
- T25 Star Driver
- T30 Star Driver
- Tack Puller
- Tapered Punch
- Bit Holder
- #1, #2, #3 Phillips Bits
- T10, 15, 20, 25, 30 Star Bits
- 3, 4, 5, 6, 7 Slotted Bits
- #1, #2, #3 Pozi Bits



ATD-580 22-PC. SAE & METRIC LONG ARM BALL END HEX KEY SET

Features:

- Made of heat treated, alloy steel for strength and durability
- Precision formed to exact tolerances
- Ball ends permit increased entry angle to work in hard-to-reach areas
- Longer length for extended reach and increased leverage

Set Contains:

- | ATD-584 - SAE: | ATD-585 - Metric: |
|-----------------|-------------------|
| • .050" • 5/32" | • 1.5mm • 5mm |
| • 1/16" • 3/16" | • 2mm • 6mm |
| • 5/64" • 7/32" | • 2.5mm • 8mm |
| • 3/32" • 1/4" | • 3mm • 10mm |
| • 7/64" • 5/16" | • 4mm |
| • 1/8" • 3/8" | |
| • 9/64" | |

HAMMERS



ATD-4082 3-PC. DEAD BLOW HAMMER SET

Features:

- These ATD dead blow hammers generate positive force with minimal rebound.
- When a conventional hammer would be too harsh, hit it "dead on" with one of these dead blow hammers.
- Featuring steel shot blast for increased positive force with minimal rebound.
- Use for chassis work or to dislodge stuck parts.
- No-mar, impact-resistant composite handle has a solid molded case over inner steel frame.

Set Contains:

- ATD-4094 - 8 oz. Dead Blow Hammer - 10.25" L
- ATD-4095 - 1 lbs. Dead Blow Hammer - 11.875" L
- ATD-4096 - 2 lbs. Dead Blow Hammer - 13.75" L

HAMMERS WITH INDESTRUCTIBLE HANDLES

Features:

- Indestructible 14" long handle is made up of (2) spring steel bars that run all the way through the handle
- Bars are locked with the hammer head using steel locking plates to ensure that the head never gets dislodged
- Special bonding process ensures that head never gets loose from the handle
- Hammer head is forged from special steel and is induction case hardened to 52 to 56 HRC for extended life
- ATD-4048 has only (2) spring steel bars running through the handle



Available Sizes:

- ATD-4048 - 48 oz. Ball Pein Hammer
- ATD-4076 - 6 lbs. Sledge Hammer w/ 16" Handle
- ATD-4078 - 8 lbs. Sledge Hammer w/ 12" Handle
- ATD-4079 - 8 lbs. Sledge Hammer w/ 16" Handle



ATD-14033 3-PC. INDESTRUCTIBLE HANDLE HAMMER SET

Features:

- Indestructible handle hammers have spring steel bars running the length of the handle
- Bars are locked with the hammer head using steel locking plates and a special bonding process to ensure that the head never gets dislodged
- Ergonomic rubber grip handle absorbs shock and vibration, reducing fatigue
- Hammer head is forged from special steel and is induction case hardened for extended life

Set Contains:

- ATD-4047 - 32 oz. Ball Pein Hammer - 14" Handle length; (2) Spring steel bars
- ATD-4063 - 2.5 lbs. Cross Pein Hammer - 16" Handle length; (4) Spring steel bars
- ATD-4064 - 4 lbs. Sledge Hammer - 12" Handle length; (4) Spring steel bars

ATD-4035 5-PC. BALL PEIN HAMMER SET

Features:

- Drop forged, polished steel heads
- Quality Fiberglass Handles
- Exceeds ANSI Specs

Set Contains:

- ATD-4036 - 8 oz. Ball Pein Hammer - Overall length 11"
- ATD-4037 - 12 oz. Ball Pein Hammer - Overall length 11-3/4"
- ATD-4038 - 16 oz. Ball Pein Hammer - Overall length 11-3/4"
- ATD-4039 - 24 oz. Ball Pein Hammer - Overall length 12-3/4"
- ATD-4040 - 32 oz. Ball Pein Hammer - Overall length 14-1/8"



ATD-4045 5-PC. HAMMER SET WITH FIBERGLASS HANDLES

Features:

- Drop forged, polished steel heads
- Quality Fiberglass Handles
- Exceeds ANSI Specs

Set Contains:

- ATD-4038 - 16 oz. Ball Pein Hammer
- ATD-4040 - 32 oz. Ball Pein Hammer
- ATD-4041 - 3 lbs. Sledge Hammer
- ATD-4042 - 3 lbs. Cross Pein Hammer
- ATD-4043 - 32 oz. Rubber Mallet



NON-SPARKING HAMMER WITH FIBERGLASS HANDLES

Features:

- Soft brass head absorbs blow impact and reduces or eliminates damage to work, fiberglass handle for comfort reduces impact to user

Available Sizes:

- ATD-4067 - 2 lbs. Non-Sparking Hammer with Fiberglass Handle
- ATD-4068 - 3 lbs. Non-Sparking Hammer with Fiberglass Handle
- ATD-4069 - 5 lbs. Non-Sparking Brass Hammer

ATD-4020 2-PC. RUBBER MALLET SET

Features:

- Soft but durable head delivers a blow with minimum marring or surface damage
- High-strength fiberglass handle absorbs vibration
- Nonslip rubber grip is integrated into the handle

Set Contains:

- ATD-4044 - 16 oz. mallet
- ATD-4043 - 32 oz. mallet



ATD-720 20-PC. PUNCH & CHISEL SET

Features:

- (4) Different types of punches & chisels for a variety of uses
- Made of high quality chrome vanadium steel
- Each punch is hardened & tempered for maximum durability
- Flat chisels are tempered & designed to resist splitting & mushrooming

Set Contains:

- 6 Pin Punches: 3/32", 1/8", 5/32", 3/16", 1/4" & 5/16"
- 5 Starter Punches: 1/8", 5/32", 3/16", 1/4" & 5/16"
- 3 Center Punches: 1/4", 3/8" & 1/2"
- 6 Flat Chisels: 1/4", 3/8", 1/2", 5/8", 3/4" & 7/8"
- Roll Up Storage Pouch



ATD-4075 3-PC. NON-SPARKING BRASS PUNCH SET

Set Contains:

- 1/4" x 4" Pin Punch
- 3/8" x 6" Pin Punch
- 1/2" x 8" Drift Punch

ATD-729 29-PC. PUNCH & CHISEL SET

Features:

- (7) different types of punches and chisels for a variety of uses

Set Contains:

- (7) Pin Punches: 3/32", 1/8", 5/32", 3/16", 1/4", 5/16" and 3/8"
- (6) Starter Punches: 3/32", 1/8", 5/32", 3/16", 1/4" and 5/16"
- (4) Center Punches: 1/4", 5/16", 3/8" and 1/2"
- (7) Flat Chisels: 1/4", 5/16", 3/8", 1/2", 5/8", 3/4" and 7/8"
- (2) Diamond Point Chisels: 5/16" & 3/8"
- (2) Cape Chisels: 1/4" and 5/16"
- Half-Round Nose Chisel: 5/16"
- Roll Up Storage Pouch



ATD-759 3-PC. LONG TAPER PUNCH SET

Features:

- Crafted from high quality steel and are fully guaranteed against defective material and workmanship
- Forged chrome vanadium steel
- Polished to a smooth finish
- Tempered for strength
- Great tool for aligning holes

Set Contains:

- 12" Long 3/16" Taper Punch
- 13-3/4" Long 1/4" Taper Punch
- 15-3/4" Long 5/16" Taper Punch
- Vinyl roll pouch included

ATD-761 5-PC. PIN PUNCH SET

Set Contains:

- 1/8", 5/32", 3/16", 1/4", and 5/16" pin punches
- Hot forged quality steel
- Polished to a smooth finish and tempered for strength
- Vinyl roll pouch included



ATD-760 8-PC. PUNCH & CHISEL SET

Set Contains:

- 1/8", 3/16" and 1/4" Pin punches
- 1/2", 5/8" and 3/4" Cold chisels
- 1/4" Solid punch
- 3/8" Center punch
- Vinyl roll pouch included

ATD-762 5-PC. ROLL PIN PUNCH SET

Features:

- These punches speed up pin removal, they center perfectly and eliminate damage to pin and hole wall

Set Contains:

- 1/8", 5/32", 3/16", 1/4" and 5/16" roll pin punches
- Manufactured to .000-.010 tolerance
- Vinyl roll pouch included



PLT-99800 5-PC. LONG TAPER PUNCH SET

Features:

- Each taper punch has a self-centering nose that aligns holes for accurate assembly.
- All punches are forged from high-carbon molybdenum tool steel, individually heat-treated and hardened the entire length with a tempered striking end for durability.
- Made in the USA

Set Contains:

- 1/8" point size, 8" overall length
- 5/32" point size, 8-1/2" overall length
- 3/16" point size, 9" overall length
- 7/32" point size, 9-1/2" overall length
- 1/4" point size, 11" overall length



PLATINUM
TECH

PUNCH & CHISEL SETS



ATD-703 AUTOMATIC CENTER PUNCH

Features:

- No Hammering - built-in mechanism delivers a punch just with the pressing of the head
- Tips are made from hardened tool steel and can be easily removed for reshaping or replacement
- Stainless steel construction
- Fully automatic single hand-operated spring-loaded punches
- Variable depth impression simply by turning the knurled head. Screwing the cap downwards produces heavy indentation; progressively lighter marking can be obtained by screwing the cap upwards
- Once the knurled cap is set to the desired position, the punch will strike the same depth every time
- Round shank with clean and well-cut knurling for positive non-slip grip
- 5-1/4" Long x 9/16" Dia. point Dia. 0.07"



ATD-714 14-PC. PUNCH & CHISEL SET

Features:

- Heat treated for maximum durability
- Black oxide finish provides superior corrosion resistance
- Canvas storage pouch

Set Contains:

- (4) Pin Punches - 3/16" x 3/8" x 6"; 1/8" x 3/8" x 5"; 3/32" x 3/8" x 5"; 1/4" x 1/2" x 6"
- Center Punch - 1/8" x 3/8" x 5"
- (4) Taper Punches - 3/8" x 5/8" x 10"; 5/32" x 1/2" x 9"; 1/8" x 1/2" x 10"; 1/8" x 3/8" x 8-1/2"
- (5) Cold Chisel - 1/2" x 3/8" x 6"; 5/8" x 1/2" x 7"; 3/4" x 5/8" x 7"; 7/8" x 5/8" x 8"; 1" x 3/4" x 8-1/2"

ATD-300 5-PC. TAPERED FLUTED EXTRACTOR SET

Features:

- Set contains tapered screw extractors in drill sizes 1/8", 3/16", 5/64", 5/16" and 3/8"
- Designed to remove broken bolts, studs, screws, pipe and pipe fittings quickly and easily
- Has gradual taper and long flutes
- Forged from alloy steel, hardened to 53-59 HRC

Set Contains:

- Drill Size: 1/8"; USS Screw Stud/Bolt Size: 1/4" and 5/16"; Minimum Depth of Hole: 3/8"
- Drill Size: 3/16"; USS Screw Stud/Bolt Size: 3/8"; Minimum Depth of Hole: 1/2"
- Drill Size: 15/64"; USS Screw Stud/Bolt Size: 7/16"; Minimum Depth of Hole: 1/2"; Pipe Size: 1/8"
- Drill Size: 5/16"; USS Screw Stud/Bolt Size: 1/2" and 9/16"; Minimum Depth of Hole: 1/2"; Pipe Size: 1/4"
- Drill Size: 3/8"; USS Screw Stud/Bolt Size: 5/8"; Minimum Depth of Hole: 5/8"; Pipe Size: 3/8"



PLT-99803 12-PC. ROLL SPRING (PIN) PUNCH SET



Features:

- Pins are quickly and easily removed without damage to wall of the hole or pin
- Each roll spring (pin) punch has a pilot point that fits into the hollow center of the pin, placing the driving shoulder of the punch in perfect contact position
- All punches are forged from high-carbon molybdenum tool steel, individually heat-treated and hardened the entire length with a tempered striking end for durability
- Made in the USA

Set Contains:

- 1/16", 5/64", 3/32", 1/8", 5/32", 3/16", 7/32", 1/4", 5/16", 3/8", 7/16", 1/2" point sizes



PLATINUM
TECH

PLT-99801 6-PC. PRECISION PUNCH SET

Features:

- All punches are forged from high-carbon molybdenum tool steel, individually heat-treated and hardened the entire length with a tempered striking end for durability
- Pin punches designed with reverse taper eliminating sticking in workpiece
- Made in the USA

Set Contains:

- Center Punch 4-1/4" Length, 1/4" Diameter
- Pin Punch 1/16" Point, 4-1/4" Length, 5/16" Diameter
- Pin Punch 5/64" Point, 4-1/2" Length, 5/16" Diameter
- Pin Punch 3/32" Point, 4-3/4" Length, 5/16" Diameter
- Pin Punch 1/8" Point, 5" Length, 5/16" Diameter
- Solid Punch 3/32" Point, 4-1/2" Length, 5/16" Diameter



PLATINUM
TECH

PLT-99804 6-PC. ROLL PIN PUNCH SET

Features:

- Pins are quickly and easily removed without damage to wall of the hole or pin
- Each roll spring (pin) punch has a pilot point that fits into the hollow center of the pin, placing the driving shoulder of the punch in perfect contact position
- All punches are forged from high-carbon molybdenum tool steel, individually heat-treated and hardened the entire length with a tempered striking end for durability
- Made in the USA

Set Contains:

- 1/8", 5/32", 3/16", 7/32", 1/4", 5/16" point sizes



PLATINUM
TECH

PLT-99802 5-PC. PUNCH & CHISEL SET

Features:

- All punches and chisels are forged from high-carbon molybdenum tool steel, individually heat-treated and hardened the entire length with a tempered striking end for durability
- Chisels are designed to be resharpened once they become dull
- Pin punches designed with reverse taper eliminating sticking in workpiece
- Made in the USA

Set Contains:

- Chisel 3/8" Cut, 5-1/4" Length, 5/16" Stock Size
- Chisel 5/8" Cut, 6-1/2" Length, 1/2" Stock Size
- Center Punch, 5" Length, 3/8" Stock Size
- Pin Punch 3/16" Point, 5-1/2" Length, 5/16" Stock Size
- Solid Punch 3/16" Point, 5" Length, 3/8" Stock Size



PLATINUM
TECH



PLT-99903 3-PC. PRY BAR SET

Features:

- Offer exceptional leverage for use in the most demanding applications
- High-strength steel shanks resist flexing and provide enhanced durability
- Shank extends the entire length of the handle to the strike cap
- High-impact and chemical-resistant handles with strike caps
- Made in the USA

Set Contains:

- PLT-99912 - 12" pry bar
- PLT-99917 - 17" pry bar
- PLT-99925 - 25" pry bar



PLATINUM
TECH



PLT-99905 5-PC. PRY BAR SET

Features:

- Offer exceptional leverage for use in the most demanding applications
- High-strength steel shanks resist flexing and provide enhanced durability
- Shank extends the entire length of the handle to the strike cap
- High-impact and chemical-resistant handles with strike caps
- Made in the USA

Set Contains:

- PLT-99912 - 12" pry bar
- PLT-99917 - 17" pry bar
- PLT-99925 - 25" pry bar
- PLT-99931 - 31" pry bar
- PLT-99936 - 36" pry bar



PLATINUM
TECH



PLT-99907 7 PC. PRY BAR SET WITH SLOTTED HANGING RACK

Features:

- Offer exceptional leverage for use in the most demanding applications
- High-strength steel shanks resist flexing and provide enhanced durability
- Shank extends the entire length of the handle to the strike cap
- High-impact and chemical-resistant handles with strike caps
- Made in the USA

Set Contains:

- PLT-99908 - 8" pry bar
- PLT-99912 - 12" pry bar
- PLT-99917 - 17" pry bar
- PLT-99925 - 25" pry bar
- PLT-99931 - 31" pry bar
- PLT-99936 - 36" pry bar
- PLT-99945 - 45" pry bar
- PLT-99904 - 7-Slot Hanging Rack



PLATINUM
TECH



SCRAPER SETS • UTILITY KNIVES



ATD-7527 4-PC. SCRAPER SET

Set Contains:

- 3-Position Safety Scraper
- Extended Razor Scraper Blade
- (2) Mini Razor Blade Scrapers



ATD-63953 3-PC. GASKET SCRAPER SET

Features:

- Drop forged, hardened and tempered alloy steel
- Shank extends the entire length of the handle to the strike cap
- High impact and chemical resistant handles with strike caps
- Precision-machined scraping edge
- Made in the USA



Set Contains:

- ATD-63955 - 3/4" gasket scraper
- ATD-63956 - 1" gasket scraper
- ATD-63958 - 1-1/2" gasket scraper



ATD-8564 2-PC. CARBIDE SCRAPER SET

Features:

- Easily removes gasket material and sealers from cast iron, steel and aluminum engine parts
- Perfect for removing stubborn carbon build-up, rust and scale
- 6" handle, perfect for getting in tight areas

Set Contains:

- ATD-85641 - 5/8" wide scraper
- ATD-85642 - 1-1/4" wide scraper

ATD-8555 MINI SCRAPERS IN A FISHBOWL DISPLAY

Features:

- (50) scrapers in a clear plastic bucket, ready to display
- Prepacked assortment includes a random selection of red and blue



ATD-8801 13-POINT SNAP KNIFE

Features:

- Break off dull blade with built in blade breaker
- Manual lock holds blade in place
- Includes built on pocket clip
- (50) in a clear plastic fishbowl, ready to display



ATD-8562 18" PROFESSIONAL URETHANE CUT OUT KNIFE

Features:

- Extra reach to cut hardened urethane down to the dash line
- Heavy-duty steel and aluminum construction
- Ergonomic cushion grip handle
- Use with standard utility razor blade



ATD-8563 24" URETHANE CUT OUT KNIFE

Features:

- Made of rigid aluminum that will not flex
- Flush securing screws prevent dash and molding damage
- Long range provides cutting leverage and distance needed in today's long dash windshields
- Vinyl non-slip grip
- Use with utility knife blade



ATD-8549 LONG REACH RAZOR BLADE SCRAPER

Features:

- Perfect for hard to reach places
- Comes with (2) stainless steel razor blades
- Plastic blade for use on plastic laminated windshields
- Hollow handle stores all blades
- Length: 10-1/2"



ATD-8533 UTILITY KNIFE BLADES (5 PACK)

Features:

- Type 92 blade, .024" thick heavy-duty high carbon steel blades
- For industrial and home use
- Fits most standard utility knives

ATD-8546 .009" SINGLE EDGE RAZOR BLADES



ATD-8812 .012" SINGLE EDGE RAZOR BLADES

Features:

- 100 pack in sliding box
- Super sharp industrial grade blades
- Individually wrapped for edge protection & safety
- Fits most standard scraper & carton cutters
- Made in the USA



ATD-8541 10-PC. POLYGUARD SCRAPER BLADE SET

Features:

- Designed to remove inspection stickers and other adhesives without scratching
- Includes (10) 1-9/16" wide Polyguard blades
- Standard razor blade size to fit all scraper handles; use on metal, glass, wood or plastic
- Made in the USA



ATD-8547 INSPECTION STICKER REMOVER TOOL

Features:

- Uses standard single edge razor blades
- Ideal for: removing inspection stickers and excess sealer, adhesive, and caulking from glass
- Cutting end folds into protective position for safe storage
- Locks into three operating positions
- Made in the USA



ATD-6516 DELUXE WINDSHIELD REMOVING TOOL

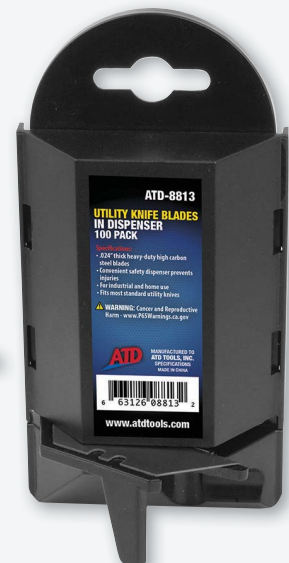
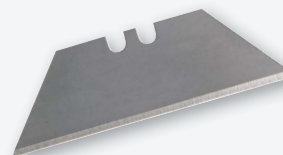
Features:

- Durable aluminum handle and steel cable pull tool
- Cuts caulking compound around windshield fast and easy
- Strong, tempered steel blade can be resharpened or replaced
- Use ATD-6517 replacement blades

ATD-8813 UTILITY KNIFE BLADES IN DISPENSER

Features:

- 100 Pieces in Handy Dispenser
- Type 92 blade, .024" thick heavy-duty high carbon steel blades
- Convenient safety dispenser prevents injuries
- Designed for general purpose cutting
- Fits most standard utility knives





ATD-8422 8-PC. HOOK & PICK SET

Features:

- 9-3/4" extra long hook & picks designed for reaching confined spaces
- Heat-treated tool steel shaft hardened 50-58 HRC
- Textured cushion handle for comfort & sure grip with wet or oily hands

Set Contains:

- Straight pick
- 90° pick
- 45° pick
- Angle pick / C pick
- Complex pick
- Combination pick
- Double Angle pick
- 180° Hook



ATD-8320 20-PC. TWISTED WIRE TUBE BRUSH SET

Features:

- Perfect for cleaning internal surfaces such as threaded holes or tubes
- For use manually or with power drill/driver
- Includes (6) brass in stainless steel, brass and nylon bristles for different jobs
- All brushes have 1/4" hex shaped quick-disconnect shanks for easy and quick changes

Set Contains:

- 1/4" quick-disconnect soft grip manual driver handle
- 1/4" quick-disconnect 6" extension adapter for manual driver or power drill/driver
- (6) Stainless steel bristle twisted wire tube brushes 1/4", 3/8", 1/2", 5/8", 3/4" & 1" diameters
- (6) Brass bristle twisted wire tube brushes 1/4", 3/8", 1/2", 5/8", 3/4" & 1" diameters
- (6) Nylon bristle twisted wire tube brushes 1/4", 3/8", 1/2", 5/8", 3/4" & 1" diameters

Set Uses:

- Stainless Steel Brushes Stiff and aggressive - use in tough spots for heavy-duty cleaning
- Brass Brushes Less abrasive - will not scratch harder metals
- Nylon Brushes Perfect for light-duty cleaning

ATD-8424 9-PC. SCRAPER, HOOK & PICK SET

Features:

- Drop forged, heat-treated chrome vanadium steel shafts
- Cushion grip handles
- Mini tools are 6.5" total length
- Full size tools are 10.25" total length

Set Contains:

- Mini Straight Pick
- Mini Full Hook
- Mini 45° Hook
- Mini 90° Hook
- Large 1" Scraper
- Large Straight Pick
- Large Full Hook
- Large 45° Hook
- Large 90° Hook



ATD-8426 5-PC. SCRAPER AND PICK SET

Set Contains:

- 11" Multi-purpose scraper
- 8-1/4" Multi-purpose scraper
- 8" Scratch awl
- 9" Cotter pin puller
- Radiator hose remover



ATD-8239 13" SCRATCH BRUSH

Features:

- For heavy-duty cleaning of metal and masonry surfaces
- 5-1/2" x 4 wire/row
- 12" length, plastic handle
- Stainless Steel Bristles



ATD-8256
10" SCRATCH BRUSH

Features:

- For heavy-duty cleaning of metal and masonry surfaces
- 4-1/2" x 4 wire/row
- 10" length, short wood handle
- Spring Steel Bristles



ATD-8257
14" SCRATCH BRUSH

Features:

- For heavy-duty cleaning of metal and masonry surfaces
- 6" x 3 wire/row
- 13-1/4" length, long wood handle
- Spring Steel Bristles



ATD-333
RECTANGULAR MIRROR WITH TELESCOPING HANDLE

Features:

- Double ball joint allows mirror to swivel 360° freely, yet hold desired position Insulated handle extends from 7" to 12"
- 2" x 3-1/2" rectangular mirror
- Overall Length: 17"



ATD-319
5-PC. TELESCOPIC TOOL KIT

Kit Contains:

- Rectangular Lighted Inspection Mirror with (2) LED lights - extends to 34.25"
- Round Inspection Mirror - extends to 28.5"
- 15 lbs. Magnetic Pick-Up Tool with contoured grip - extends to 30"
- Flexible/extendable Aluminum Inspection Light with (3) LEDs and 5 lbs. magnetic pick up function - extends to 22.25"
- 1 lbs. Magnetic Pick-Up Tool - extends to 25.4"



ATD-330
4-PC. TAPE MEASURE SET

Features:

- Easy read markings
- Non-slip co-molded rubber grip with high impact ABS case
- Convenient belt clip keeps tape measures handy for the job

Set Contains:

- 12' x 5/8"
- 16' x 3/4"
- 25' x 1"
- 33' x 1"



160 Enterprise Drive | Wentzville, MO 63385 | www.atdtools.com

©2025 ATD Tools, Inc. All rights reserved. Trademarks of companies mentioned herein appear for identification purposes only and are the property of their respective companies.

