



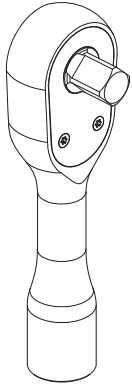
## PLT-99612, PLT-99638, PLT-99680, PLT-99681, PLT-99682 Repair Instructions

**1/4" Drive Repair Kit- PRT99680-01**

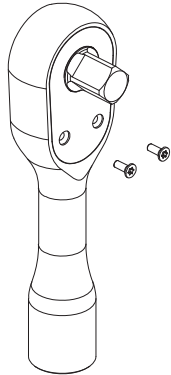
**3/8" Drive Repair Kit- PRT99681-01**

**1/2" Drive Repair Kit- PRT99682-01**

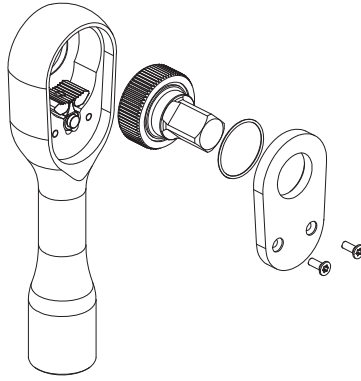
### To Disassemble:



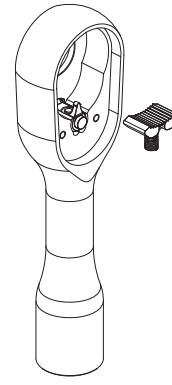
1. Hold handle in vise, head up (for best results). Clean cover plate, removing grime with a dry towel.



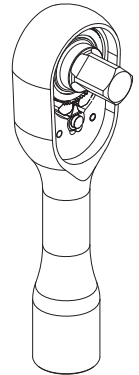
2. Using a star head driver, remove screws from cover plate.



3. Pull on square end of gear to remove gear, o-ring and cover plate from the handle.



4. Remove pawl and spring

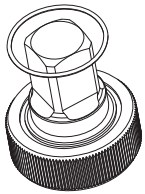


5. Remove reversing lever from the top side of the handle as shown. Tilt to remove.

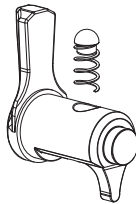
6. Remove debris and spray the inside of the handle with WD-40™ or equivalent thin film of penetrating lubricant to clean.

### To Assemble:

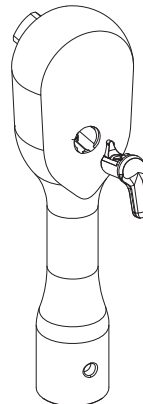
(Use ALL new parts in kit)



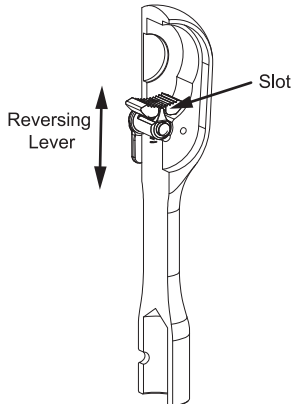
1. Install o-ring on gear in groove at the bottom of the gear.



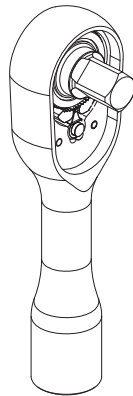
2. Assemble the positioner set into the reversing lever body hole.



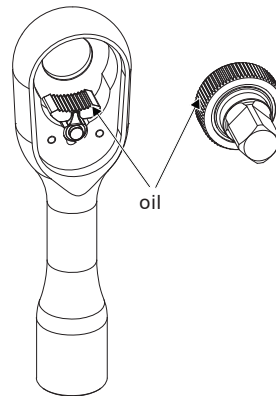
3. Install reversing lever, tilting it forward as it goes into the opening. **NOTE:** Use a small tool to push the positioner set into body hole and hold it until the lever body is completely in the wrench.



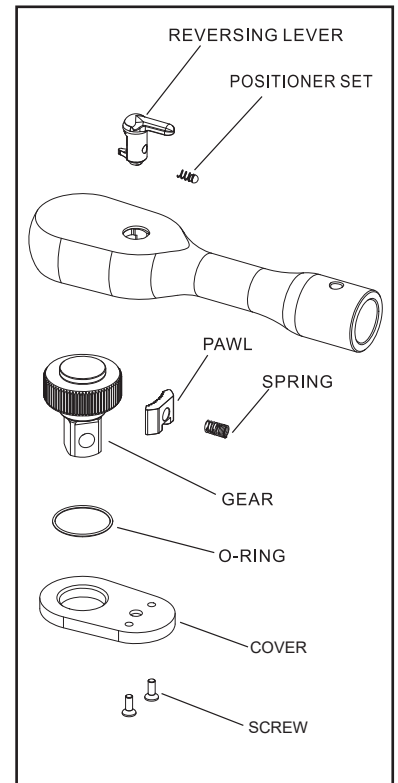
4. Install the pawl and spring into the main hole of the wrench. **NOTE:** The slot of the pawl must face out. The spring must install into the front hole of the lever. Make sure the reversing lever is in line with the handle to ensure access to the hole the spring needs to seat into.



5. Hold the tool and insert the gear into the gear bore, then remove the tool.



6. Apply a light coat of Marvel Mystery Oil™ or equivalent on the gear and pawl as shown.



7. Replace cover plate and use star head driver to fasten plate screws.

8. Turn the gear and reversing lever in both directions, and check that the tool has a smooth ratcheting action with no binding. If the ratchet binds, discontinue use and contact your supplier for a replacement wrench.