



## ATD-80460 500 LUMEN RECHARGEABLE PAINT GUN LIGHT Owner's Manual



### Features:

- Versatile color temperature settings: Choose from (5) different color temperature settings ranging from 2700K to 6500K
- CRI rating of > Ra96 (color rendering index) ensures accurate and vibrant color representation
- Designed to securely fit onto paint guns with OD nozzle sizes ranging from 27mm to 41mm, providing a stable and reliable lighting solution
- Optional motion-sensing mode allows you to effortlessly turn the light ON or OFF with a double-wave gesture
- SABER's innovative constant current technology ensures that the light delivers the rated lumen output consistently throughout the battery charge cycle
- Memory function records preferred color temperature and brightness setting after 5 seconds of use and recalls it the next time the device is activated
- Built with chemical-resistant polypropylene and nylon housing materials, this product is designed to withstand the demands of various shop environments
- Flexible hinge enables seamless fitment onto a wide range of paint gun brands and styles while also conveniently transforming the light into an optional handheld work light
- Equipped with USB Power Delivery (USB-C PD) fast-charging technology, this product ensures quick and efficient charging for minimal downtime
- IP65 rated for dust and water resistance, as well as IK07 rated for mechanical impact protection
- Automatic shut-off and overcharge protection to maximize battery life and ensure long-lasting performance
- Convenient flashing low-battery warning alerts user when it's time to recharge
- Intuitive red and green charging indicator LEDs provide a clear visual of charging status

### Includes:

- (5) clear polycarbonate lens covers (also available separately - ATD-80465)
- USB type-C charging cord

### Specifications:

- Length: 8.07" (4.875" folded)
- Brightness: 500 lumens (high), 250 lumens (low)
- Runtimes: 2 hours (high), 4 hours (low)
- Battery: 3.6V 3200mAh lithium-ion rechargeable

### OPERATING INSTRUCTIONS:

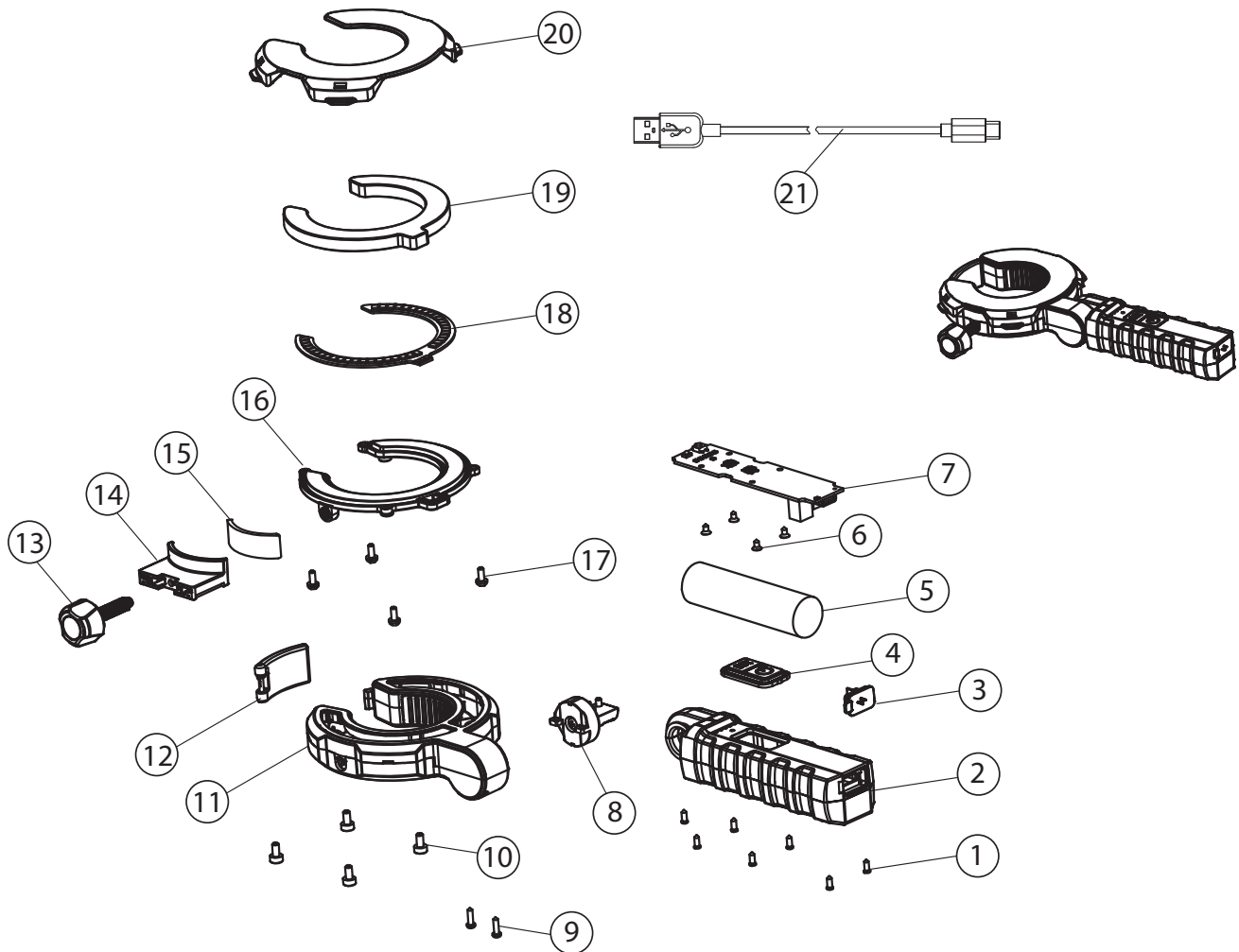
- Before use, plug the unit into any 110-120V AC power source or 5V DC USB port and let the unit charge until the indicator beside the USB Type C socket turns green (fully charged).
- Press the power switch to turn the unit on. Press the CCT switch to adjust the color temperature. Press and hold the power switch to turn the motion sensor (located above the color temperature LEDs) on. Press and hold the power switch again to turn the motion sensor off. The motion sensor is activated with a "double wave" in front of the motion sensor.
- **CAUTION:** Leaving the motion sensor function on, even when the light is not in use, will deplete the battery.
- Charge this light every month if not in constant use, and after each use if used often, to ensure longevity.

### CAUTIONS:

- **DO NOT** use in or around tubs, showers, sinks, pools, hot tubs or any wet environment.
- **DO NOT** operate with wet hands.
- Use only the recommended voltage and frequency requirements.
- Keep out of reach of children.
- Keep light away from hot objects.
- **DO NOT** leave in direct sunlight for prolonged lengths of time.

## REPLACEMENT PARTS

Not all components of this product are replacement items, but are illustrated as a convenient reference for position in the assembly sequence. When ordering parts, give model number, part number and description. Call your distributor for current pricing:



ITEM#	ORDERING PART#	PART DESCRIPTION
1	PRT80460-01	SCREW A
2	PRT80460-02	HANDLE ASSEMBLY
3	PRT80460-03	USB COVER
4	PRT80460-04	SWITCH COVER ASSEMBLY
5	PRT80460-05	LI-ION BATTERY
6	PRT80460-06	SCREW B
7	PRT80460-07	SWITCH PCBA W/USB
8	PRT80460-08	GEAR ASSEMBLY
9	PRT80460-09	SCREW C
10	PRT80460-10	SCREW D
11	PRT80460-11	HOUSING ASSEMBLY
12	PRT80460-12	JOINT ASSEMBLY
13	PRT80460-13	BOLT
14	PRT80460-14	SLIDING BLOCK
15	PRT80460-15	RUBBER PAD
16	PRT80460-16	HEATSINK
17	PRT80460-17	SCREW E
18	PRT80460-18	LED BOARD
19	PRT80460-19	LENS
20	ATD-80465	LENS COVER - 5 PACK
21	PRT80020-14	TYPE C USB CABLE



**THIS WARRANTY AND CONFIRMED RECEIPT(S) SHOULD BE RETAINED BY THE CUSTOMER AT ALL TIMES**

PURCHASED FROM: \_\_\_\_\_

DATE PURCHASED: \_\_\_\_\_

INVOICE/RECEIPT NUMBER: \_\_\_\_\_

Your ATD-80460 is warranted for a period of 12 months from the original purchase date.

For a period of one (1) year from your purchase date, ATD Tools, Inc. will repair or replace (at its option) without charge, your ATD product if it was purchased new and the product has failed due to a defect in material or workmanship which you experienced during normal use of the product. This limited warranty is your exclusive remedy.

To access the benefits of this warranty, contact your supplier, or point of sale directly. You may be advised to return the product under warranty, freight prepaid, to your supplier for warranty determination.

If this ATD product is altered, abused, misused, modified, or undergoes service by an unauthorized technician, your warranty will be void. We are not responsible for damage to ornamental designs you place on this ATD product and such ornamentation should not cover any warnings or instructions or they may void the warranty. This warranty does not cover scratches, superficial dents, and other abrasions to the paint finish that occur under normal use. It also does not cover normal wear items such as but not limited to brushes, batteries, drill bits, drill chucks, pads or blades.

Subject to the law in your state:

- (1) Your sole and exclusive remedy is repair or replacement of the defective product as described above.
- (2) ATD is not liable for any incidental damages, including but not limited to, lost profits and unforeseeable consequences.
- (3) The repair and replacement of this product under the express limited warranty described above is your exclusive remedy and is provided in lieu of all other warranties, express or implied. All other warranties, including implied warranties and warranties of merchantability or fitness for a particular purpose are disclaimed and, if disclaimer is prohibited, these warranties are limited to one year from your date of purchase of this product.

Some states' laws do not allow limited durations on certain implied warranties and some states' laws do not allow limitations on incidental or consequential damages. You should consult the law in your state to determine how your rights may vary.

[Affix receipt or invoice here for safe keeping]