



REGULATOR INSTRUCTION SHEET

ATD-7788 & ATD-7789

Standard Units: Relieving
 "N" Designates: Non-Relieving
 Maximum Supply Pressure: 300 psi
 Operating Temperature Range: 40°F to 120°F

WARNING! For compressed air service only. Do not use on life support systems or breathing air systems.

INSTALLATION: Install regulators so the air flow is in the direction as indicated on the head of the unit. Regulators should be installed downstream from filter or upstream from lubricators, but as close as possible to the pneumatic tools or appliances being serviced. The regulator will accurately control secondary pressure between 2 and 250 psi (see optional spring kits), maximum primary pressure is 300 psi. The self-bleed feature permits use on dead-end applications.

WARNING! Units are die cast aluminum, do not torque when installing regulator or gauge. Use of Teflon tape is **NOT** recommended.

OPERATION ADJUSTMENTS: After the regulator is installed, back off pressure adjusting knob before the air is turned on. Turn on the air supply and regulate the adjusting knob until pressure gauge shows the desired pressure. To lock adjusting knob, push down until knob snaps into locking groove. To make regulator tamper-resistant, remove adjusting knob from unit. Regulator may be readjusted by replacing knob.

MAINTENANCE: On detection of air leaks, pressure fluctuation, or "creep" depressurize system and remove bottom cap. Inspect valve seat for damage or wear. Inspect seat in head casting for foreign material or damage. Clean with kerosene and blow out with air. Replace any damaged parts.

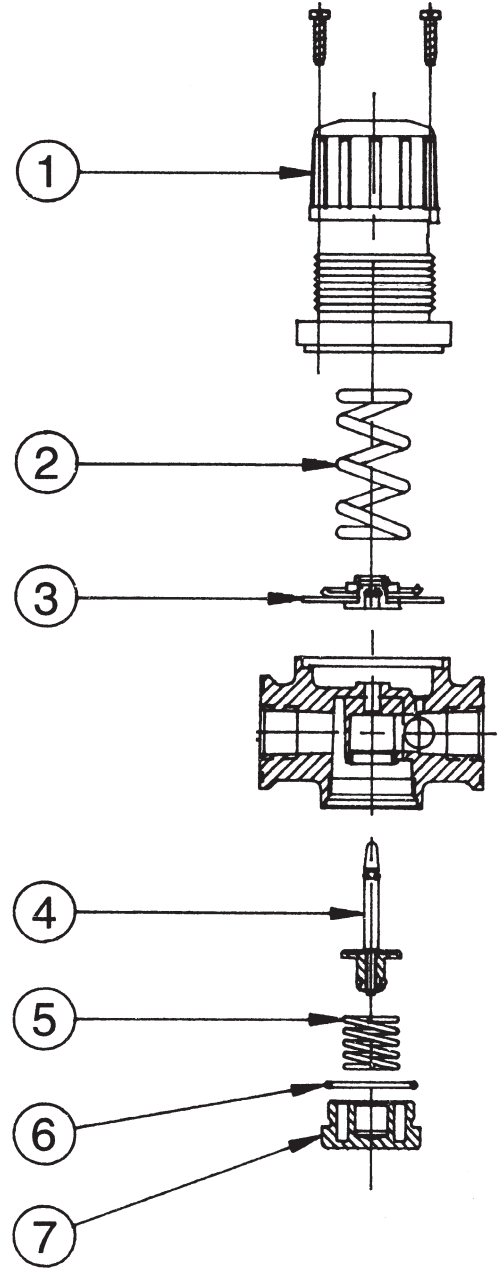
If leaks persist, remove bonnet, inspect diaphragm and diaphragm seat for wear or foreign materials.

TAMPER-RESISTANT OPTION: The tamper-resistant cap (P/N 75104) has been provided in the plastic bag to ensure that the reduced pressure cannot be tampered with. To make the unit "tamper-resistant", proceed as follows:

Turn the adjustment knob until the desired reduced pressure is reached. Remove the adjustment knob by pulling upward. Install the tamper-resistant cap in its place.

NOTE: To make permanently tamper-resistant-, LOCTITE the cap into place.

CAUTION: By permanently loctiting the tamper-resistant cap into place, the pressure adjustment cannot be changed.



Item	Description	Kit Number	Contents
4, 5, 6, 7	Valve Kit	VK37	Valve Assembly, O-Rings, Valve Spring
			Bottom Plug
3	Diaphragm Kit	Dk35	Relieving Diaphragm (STD)
		DK35N	Non-Relieving Diaphragm Assembly
		DK35HD	Relieving Diaphragm 0-250 LBS
		DK35HDN	Non-Relieving Diaphragm 0-250 LBS
2	Spring Kit	SK35	Spring, 0-125 PSI Range (STD)
		SK35L	Spring, 0-60 PSI Range
		SK35H	Spring, 0-250 PSI Range
1	Spring Cage Kit	SC35	Adjusting Knob, Adjusting Screw Assembly, Spring Cage, Screws (STD)
		SC35T	T-Handle Adjusting Screw Assembly, Spring Cage, Screws
Not Shown			