



Coalescing Instruction Sheet

ATD-7785, 7833, 7834, 7835, 7836 (ATD-7763, 7867, 7884, 7885)

Bowl	Max. Pressure	Temperature Range
Metal	250 psi	40°F to 200°F
W/Sight	250 psi	40°F to 160°F
W/Auto Drain	30 psi to 175 psi	40°F to 120°F

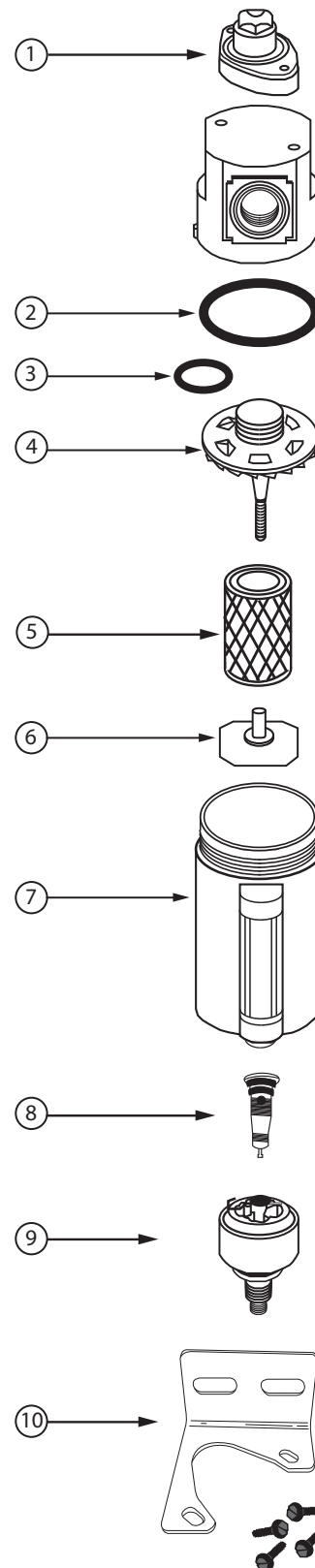
WARNING! For compressed air service only. Do not use on life support systems or breathing air systems. Metal bowl sight is made of polycarbonate which will craze and/or crack if exposed to chemicals incompatible with polycarbonate. For any additional information regarding chemical compatibility, please contact: General Electric Plastics, One Plastic Ave, Pittsfield, MA.

INSTALLATION: Install dryer so that air flows in the direction indicated by the arrow on the head of unit. Install filter upstream of regulators. If an air dryer is being used, install the filter downstream from the dryer. In most cases, a particulate pre-filter with a 3 micron absolute element is recommended to greatly extend the life of the coalescer element. When the coalescer element becomes clogged with dirt, it must be replaced. If it is kept free from dirt, it will coalesce oil indefinitely. A pre-filter will remove water and dirt before it reaches the coalescer, and will reduce maintenance costs. The coalescer filter is then free to remove oil, oil vapors, and submicron sized particles without prematurely clogging with large particles of dirt and scale.

WARNING! Units are die cast aluminum, do not torque while installing. Also, pressurize unit slowly after installation of unit or new element to avoid damage to the element.

OPERATION ADJUSTMENTS: If the filter is installed properly, it should give long, trouble-free service. The pressure drop across the filter should not exceed 10 psi. If the pressure drop exceeds 10 psi, either the filter element needs to be replaced or the unit is being operated beyond its capacity and a larger size unit is required. Operating the filter at a pressure drop in excess of 10 psi will greatly reduce the efficiency of the filter.

DIFFERENTIAL PRESSURE INDICATOR MAINTENANCE (#1 ON THE DRAWING): When The filter is depressurized, periodically clean and grease the piston o-ring with a non-silicon ring grease (see item 1 in drawing).



ITEM	DESCRIPTION	KIT NUMBER	CONTENTS
1	INDICATOR SIGHT KIT	DPK05	SCREWS, SIGHTGLASS, SPRING BRACKET, O-RING, INNER & OUTER CYLINDERS, SIGHT DOME
2,7	BOWL KIT	BKF45M (6 OZ.)	METAL BOWL, DRAIN COCK, O-RING
		BKF45W (6 OZ.)	METAL BOWL, SIGHT, DRAIN COCK, O-RING
3, 4, 6	REPAIR KIT	RKF45	RETAINER, O-RING, BAFFLE
5	ELEMENT KIT	EK55	.03 MICRON COALESCING ELEMENT (STD)
		EK55A	.01 MICRON COALESCING ELEMENT
NOT SHOWN	SIGHT KIT	WK45	SIGHT TUBE, RETAINER, INDICATOR BALL, O-RING
8	OVERNIGHT DRAIN (STD)	CKFK	OVERNIGHT DRAIN ASSEMBLY
9	AUTO DRAIN (OPTIONAL)	5200	FLOAT DRAIN ASSEMBLY, BOWL INSERT, O-RING, RETAINER RING
10	MOUNTING BRACKET (OPTIONAL)	FBK5	MOUNTING BRACKET, SCREWS