



## ATD-7535 3.5-Ton Professional Service Jack Owner's Manual



### Features:

- With a low lift height of 3.38", the jack can go under most vehicles with limited ground clearance.
- The extra high height of 24.63" makes it the perfect jack for lifting pickups and SUVs that require more height.
- The Twin Piston Quick Lifting system goes from low height to high height in 7 strokes under no load.
- U-Joint release mechanism provides precise control of load descent in any handle position
- Equipped with 2 extra-wide steel casters and 2 swivel casters with bearings for stability and easy mobility
- Extra long 50" handle with bumper pad protects vehicles from marring and scratching
- Meets or exceeds ASME PASE-2019 standards
- Exclusive Swift Lift™ Technology offers a quicker lift for professional performance

# ATD-7535 FLOOR JACK SAFETY WARNING AND PRECAUTIONS



This is the safety notification symbol. This symbol will notify you of any potential injury hazards. Please follow all instructions that follow this symbol to avoid possible injuries or death.

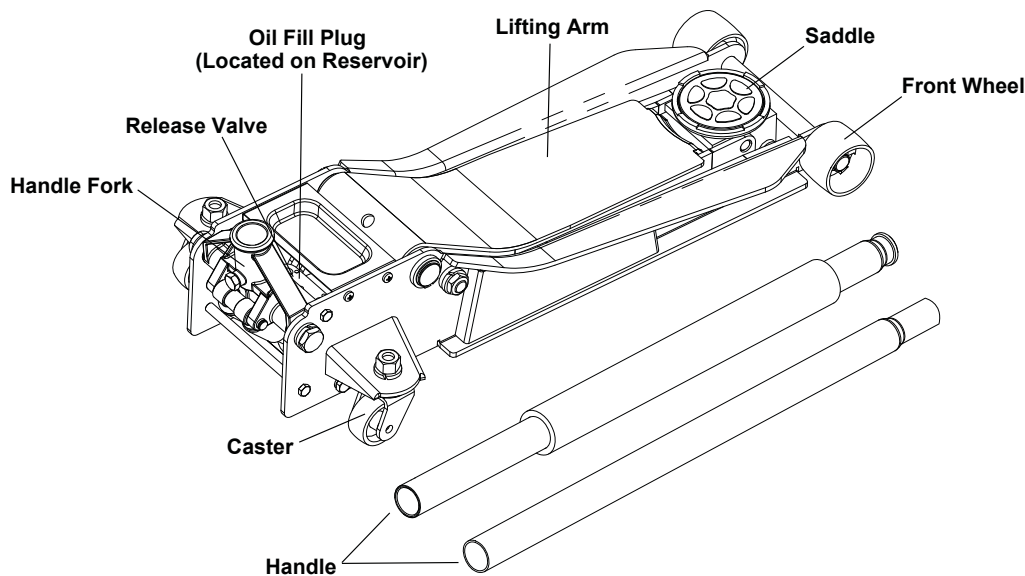


Indicates a hazardous situation - If proper steps are not followed death or serious injury could result.

## SAFETY AND GENERAL INFORMATION

**Save these instructions.** For your safety, read, understand, and follow the information provided with and on this jack and jack stands before using. The owner and/or operator of this equipment should have an understanding of the use of this equipment and safe operating procedures before attempting to use. The owner and operator should be aware that the use and repair of this product may require special skills and knowledge. Instructions and safety information should be conveyed in the operator's native language before use of this equipment is authorized. If any doubt exists as to the safe and proper use of this product, remove from service immediately.

**Inspect before each use.** Do not use if broken, bent, cracked or damaged parts (including labels) are noted. Any jack or jack stand that appears damaged in any way, or operates abnormally or is missing parts should be removed from service immediately. If you suspect that a jack stand was subjected to a shock load (a load dropped suddenly, unexpectedly upon it), immediately discontinue use until it has been checked by a service center. It is recommended that an annual inspection be done by qualified personnel. Labels and owner's manuals are available from the manufacturer. Contact your distributor to obtain them.



## ! SETUP ASSEMBLY

1. Unpack your jack and jack handle from the box. The handle fork is supported by a nylon block during transportation. Press down on the handle fork to release the nylon support block, and discard it.
2. Loosen the screw on the back of the handle fork until it no longer protrudes into the handle socket.
3. Insert the jack handle into the handle fork completely.
4. Ensure that the handle is correctly and fully inserted into the socket, then tighten the handle socket screw. Pull up on the handle to ensure that the tip of the bolt has seated inside the groove near the bottom of the handle. If the bolt is seated properly, the handle will not pull out of the socket. Also make sure that the handle can be turned smoothly and easily once the handle socket screw has been tightened.

## PURGING AIR FROM THE HYDRAULIC SYSTEM

If the jack does not raise to maximum height or the pump strokes seem irregular, there is probably air trapped in the hydraulic system:

- A. Turn the pump handle counterclockwise two full turns from its closed position.
- B. Quickly pump the jack 10 full strokes.
- C. Turn the pump handle clockwise until it stops and proceed to pump the jack to maximum height.
- D. If the condition seems better but still exists, **repeat steps A through C.**

## OPERATING INSTRUCTIONS

Become familiar with jack's operating components. The pump handle must be rotated in a clockwise direction until it stops in order to pump the jack up to its desired height. Lowering the jack may be accomplished by slowly turning the pump handle in a counterclockwise direction. The more the handle is turned in a counterclockwise direction the faster the jack will lower. It will never be necessary to turn the pump handle more than 2 full complete counterclockwise revolutions to lower the jack.

### WARNING TO RAISE A VEHICLE

1. The vehicle should be on a flat, level surface.
2. Chock the vehicle wheels that will not be lifted off the ground. Turn the vehicle engine off and make sure that the vehicle transmission is in park or in gear and then apply the emergency brake before lifting the vehicle.
3. Determine the vehicle's proper lift point and position the jack's saddle at that lift point. Pump the jack so the saddle makes contact with the lift point and the lift point is centered and secure on the saddle. If the saddle is not centered, lower the jack and properly align the saddle with the vehicle lift point.
4. Pump the jack so the vehicle lift point is raised slightly higher than the desired work height. After reaching the desired height, immediately position a matched pair of jack stands at the vehicle's designated support locations. Raise the stand's ratchet bars so they make as close a contact as possible with the vehicle's designated support locations, and insert the safety pin into the base.
5. Slowly lower the vehicle onto the jack stands and ensure the setup is stable. If there is any instability, raise the vehicle off of the stands and correct the setup.

### WARNING TO LOWER A VEHICLE

1. Follow steps 1 through 3 under "TO RAISE A VEHICLE"
2. Raise the vehicle high enough to clear the jack stands and remove the jack stands from under the vehicle.
3. Slowly lower the vehicle to the ground by twisting the handle counterclockwise, slowly.

## MAINTENANCE

1. The jack owner should determine a maintenance schedule based on jack usage and shop conditions.
2. The jack should be stored in a well-protected environment and not left out in the weather. Any inoperable jack resulting from rust or corrosion is not eligible for warranty consideration.
3. The jack has a warning label which must be legible at all times. Any damaged or unreadable warning label must be replaced
4. The jack should be inspected before each workday to make sure it is in its proper working condition. Any jack that is damaged, has loose or missing components or hydraulic leaks must be removed from service until repaired, or replaced altogether.
5. The jack should be lubricated as determined by the maintenance schedule. A white lithium base grease should be used on all jack chassis linkages, inside handle yoke, rear caster wheels, front wheels, and handle base roller. Any jacks that are inoperable due to insufficient or no lubrication are not eligible for warranty consideration.
6. There should be no reason to top off the jack's hydraulic fluid reservoir. If the jack is leaking fluid it must be serviced by a qualified repair technician. After repairs are completed, the jack should be refilled with a high quality, non-detergent hydraulic jack oil. We recommend Mobil DTE 13M or equivalent.

## ADDING HYDRAULIC OIL

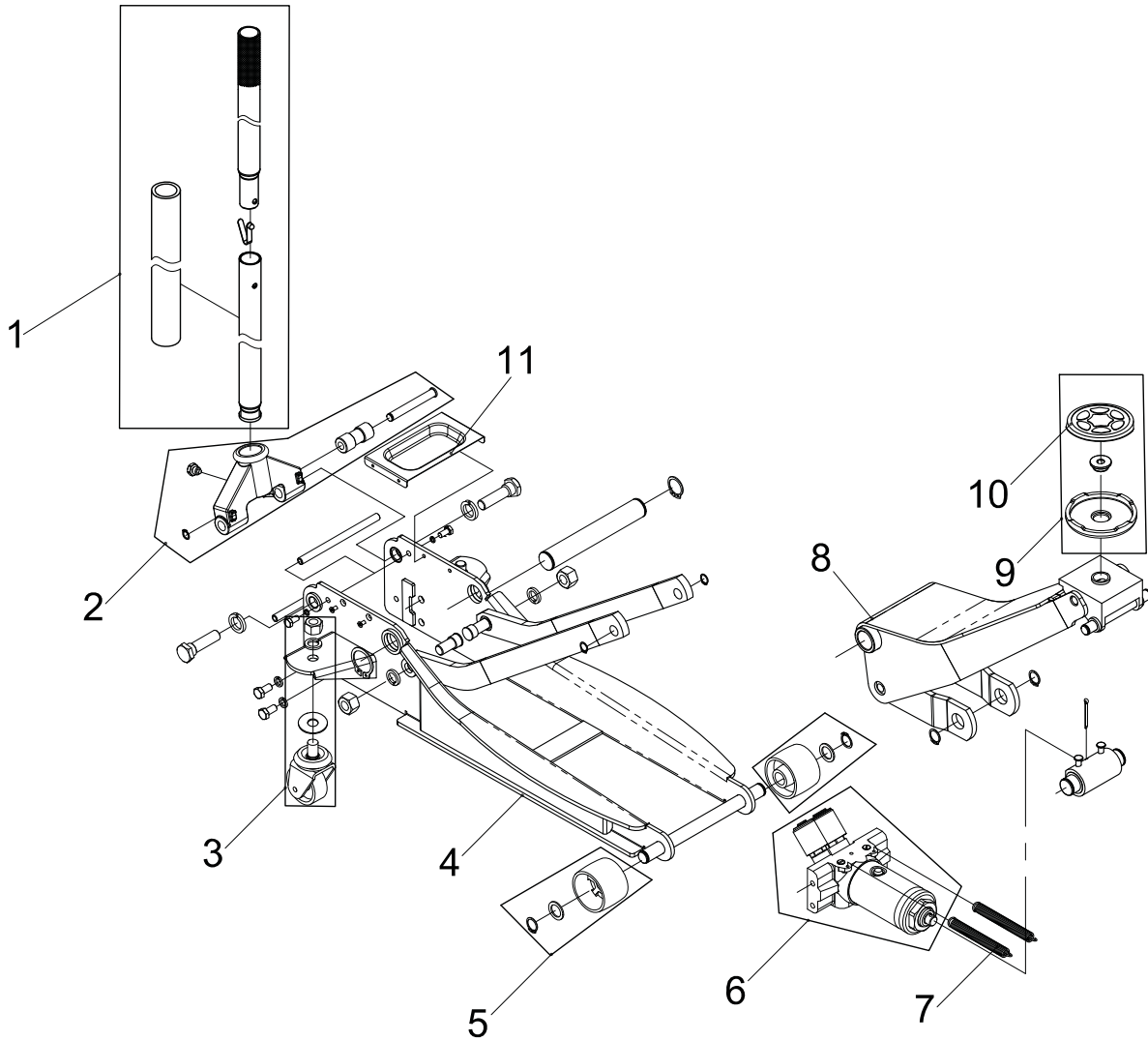
1. Remove the jack's cover plate located in front of the handle yoke.
2. Open the release valve by rotating the jack handle two full counterclockwise rotations. The jack should be lowered all the way. Lower the pump handle to the horizontal position so it is level with the ground.
3. Remove the reservoir fill plug or screw. Look down inside the reservoir - the fluid should be no higher than the top of the cylinder inside the reservoir. Add or remove fluid to the proper level accordingly. Jack should be refilled with a high quality, non-detergent hydraulic jack oil. We recommend Mobil DTE 13M or equivalent. **IMPROPER FLUID LEVELS CAN CAUSE PUMP PROBLEMS.**
4. After adding oil, hold down the saddle and gently pump the jack handle. If there is air in they system, bubbles will surface. Continue adding a small amount of jack oil and repeat the pumping process. Continue this process until no bubbles are seen during the pumping process. Make sure the oil level is at the top of the cylinder inside the reservoir plug hole.
5. Replace the reservoir fill screw or plug and conduct air purging procedure as described in **SETUP** instructions.

## **TROUBLESHOOTING**

<b>Trouble</b>	<b>Cause</b>	<b>Solution</b>
Jack does not lift	1. Release valve is open	1. Verify that the release valve is closed Release valve may need cleaning
	2. Low/no hydraulic fluid in reservoir	2. Fill with approved hydraulic fluid and bleed system
	3. Air trapped in hydraulic system	3. Follow the purge air procedure on pg. 2
	4. Load is above capacity of jack	4. Use the correct equipment
	5. Delivery valve and/or bypass valve not working correctly	5. Clean to remove dirt or foreign objects from the system. Replace hydraulic fluid
	6. Seals worn or defective	6. Replace seals
Jack lifts only partially	1. Too much or not enough hydraulic fluid	1. Check hydraulic fluid level
Jack advances slowly	1. Pump not working correctly	1. Rework pump
	2. Seals leaking	2. Replace seals/O-rings
Jack lifts load, but doesn't hold	1. Cylinder packing is leaking	1. Replace packing
Jack leaks hydraulic fluid	2. Valve not working correctly. (Suction, delivery, release or bypass)	2. Inspect valves. Replace if necessary
	3. Air trapped in hydraulic system	3. Follow the purge air procedure on pg. 2
Jack will not retract	1. Release valve is closed	1. Open the release valve by turning the handle counterclockwise (CCW). It may be necessary to clean release valve

## REPLACEMENT PARTS

Not all components of this product are replacement items, but are illustrated as a convenient reference for position in the assembly sequence. When ordering parts, give model number, part number and description. Call your distributor for current pricing:



ITEM#	ORDERING PART#	PART DESCRIPTION	QTY
1	PRT7535-01	HANDLE ASSEMBLY WITH FOAM	1
2	PRT7535-02	HANDLE FORK ASSEMBLY	1
3	PRT7535-03	REAR CASTER ASSEMBLY	2
4	PRT7535-04	SIDE PLATES	1
5	PRT7535-05	FRONT WHEEL ASSEMBLY	2
6	PRT7535-06	PUMP ASSEMBLY	1
7	PRT7535-07	RETURN SPRING	2
8	PRT7535-08	LIFTING ARM	1
9	PRT7535-09	SADDLE ASSEMBLY	1
10	PRT7535-10	RUBBER SADDLE PAD	1
11	PRT7535-11	TOOL PLATE	1
N/S	PRT7535-SK	SEAL KIT	1



**THIS WARRANTY AND CONFIRMED RECEIPT(S) SHOULD BE RETAINED BY THE CUSTOMER AT ALL TIMES**

PURCHASED FROM: \_\_\_\_\_

DATE PURCHASED: \_\_\_\_\_

INVOICE/RECEIPT NUMBER: \_\_\_\_\_

Your ATD-7535 is warranted for a period of 12 months from the original purchase date.

For a period of one (1) year from your purchase date, ATD Tools, Inc. will repair or replace (at its option) without charge, your ATD product if it was purchased new and the product has failed due to a defect in material or workmanship which you experienced during normal use of the product. This limited warranty is your exclusive remedy.

To access the benefits of this warranty, contact your supplier, or point of sale directly. You may be advised to return the product under warranty, freight prepaid, to your supplier for warranty determination.

If this ATD product is altered, abused, misused, modified, or undergoes service by an unauthorized technician, your warranty will be void. We are not responsible for damage to ornamental designs you place on this ATD product and such ornamentation should not cover any warnings or instructions or they may void the warranty. This warranty does not cover scratches, superficial dents, and other abrasions to the paint finish that occur under normal use. It also does not cover normal wear items such as but not limited to brushes, batteries, drill bits, drill chucks, pads or blades.

Subject to the law in your state:

- (1) Your sole and exclusive remedy is repair or replacement of the defective product as described above.
- (2) ATD is not liable for any incidental damages, including but not limited to, lost profits and unforeseeable consequences.
- (3) The repair and replacement of this product under the express limited warranty described above is your exclusive remedy and is provided in lieu of all other warranties, express or implied. All other warranties, including implied warranties and warranties of merchantability or fitness for a particular purpose are disclaimed and, if disclaimer is prohibited, these warranties are limited to one year from your date of purchase of this product.

Some states' laws do not allow limited durations on certain implied warranties and some states' laws do not allow limitations on incidental or consequential damages. You should consult the law in your state to determine how your rights may vary.

[Affix receipt or invoice here for safe keeping]