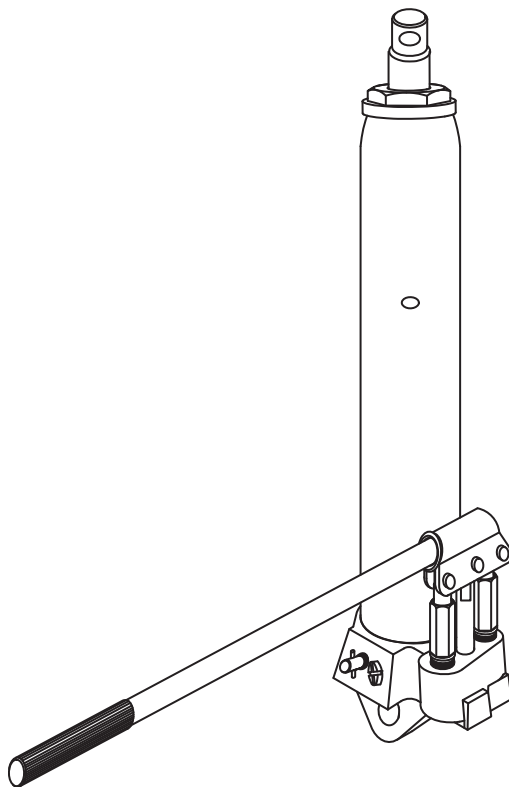




ATD-7487
8-Ton Double Pump Hydraulic Ram
Owner's Manual



Capacity: 17,637 lbs. (8,000 kg)



The safety alert symbol is used to alert you to potential personal injury hazards. Obey all safety messages that follow this symbol to avoid possible injury or property damage.

Read this manual and follow all Safety Rules and Operating Instructions before using this product.

Save these instructions. For your safety, read, understand, and follow the information provided on your engine crane. The owner and operator of this equipment shall have an understanding of your engine crane and safe operating procedures before attempting to use. The owner and operator shall be aware that use and repair of this product may require special skills and knowledge. Instructions and safety information shall be conveyed in the operator's native language before use of your engine crane is authorized. If any doubt exists as to the safe and proper use of this product, remove from service immediately. **Inspect before each use.** Do not use if broken, bent, cracked or damaged parts are noted. Any engine crane that appears damaged in any way, or operates abnormally shall be removed from service immediately. If the engine crane has been or suspected to have been subjected to a shock load (a load dropped suddenly, unexpectedly), immediately discontinue use until product has been checked by an authorized service center. It is recommended that an annual inspection be done by qualified personnel. Labels and owner's manuals are available from manufacturer.

PRODUCT DESCRIPTION

This ATD 8-Ton Double Pump Hydraulic Ram is designed to work with the ATD-7485A.

BEFORE USE (refer to Fig.1 and replacement parts illustration on page 5 for location of components)

1. Inspect crane before each use. Do not use if bent, broken or cracked components are noted. Ensure that casters and boom move freely. Check for and tighten any loose assemblies.

2. Verify that the product and the application are compatible, if in doubt call ATD customer support at (888) 332-6419.
3. Before using this product, read the owner's manual completely and familiarize yourself thoroughly with the product and the hazards associated with its improper use.

! WARNING

Read, understand and follow all warnings and instructional material provided on and with this product. Do not modify this equipment. Failure to heed this warning may result in personal injury as well as property damage.

! ADVERTENCIA

- Leer, comprender, y seguir las instrucciones antes de utilizar el aparato.
- El manual de instrucciones y la información de seguridad deben estar comunicado en lengua del operador antes del uso.
- No seguir estas indicaciones puede causar daños personales o materiales.

SPECIFICATIONS

Model	Capacity	Min Height	Max Height	Saddle Diameter	Base Size (L x W)	Stroke	Net Weight
ATD-7487	17,637 lbs.	26.69"	46.38"	1-3/8"	5-1/4" x 4-7/8"	19.68"	31.3 Lbs

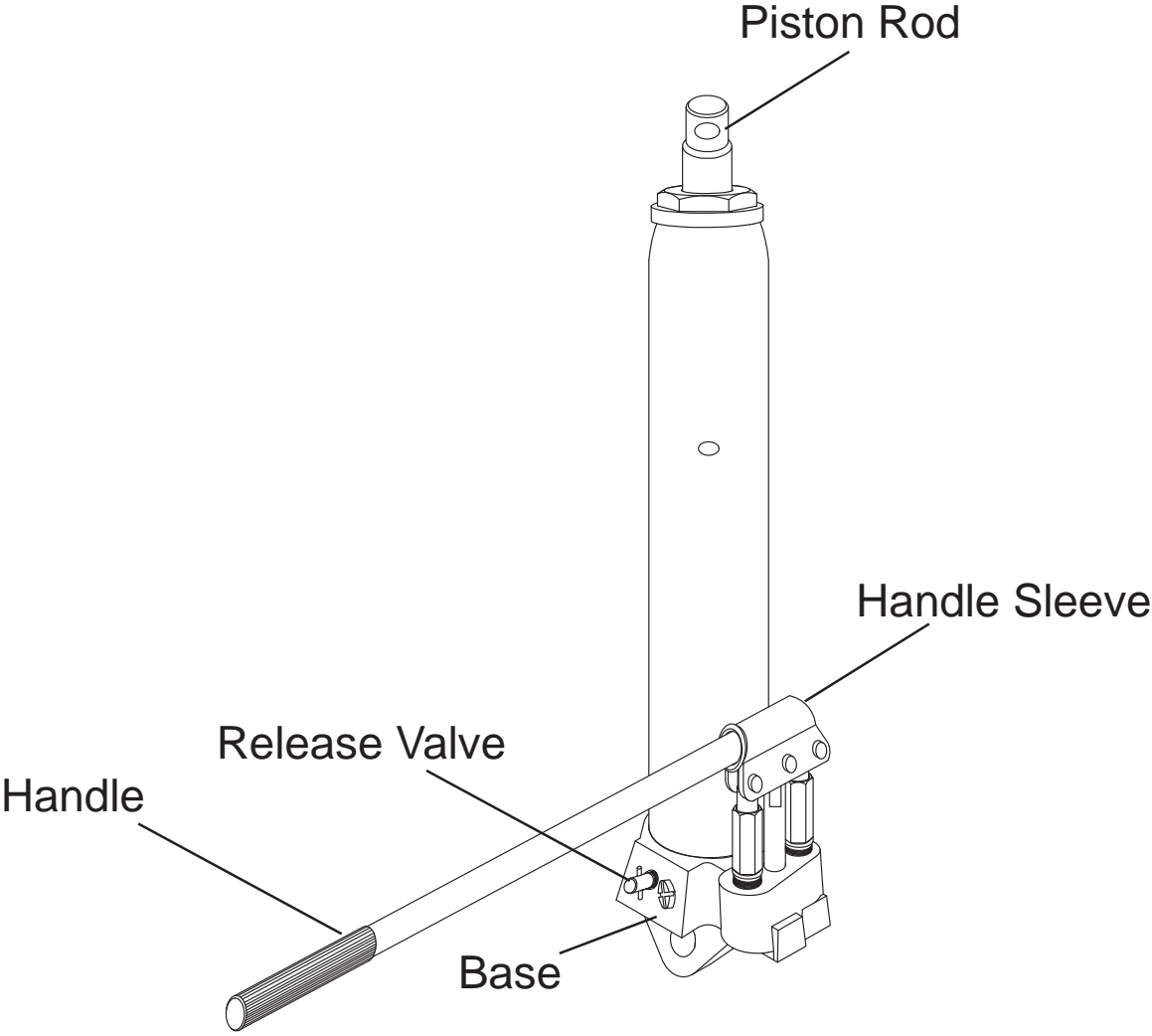


Fig. 1 - Typical Double Pump Hydraulic Ram Nomenclature

OPERATION

1. Ensure application is compatible with product.
2. Read, understand and follow engine removal and installation instructions provided by vehicle service or shop manual.
3. Chains used in conjunction with this product shall have a rated capacity greater than the weight of the object being lifted. Secure chain/hook assembly to appropriate lifting point on engine. Refer to vehicle service or shop manual for the location of appropriate lift points. Ensure load is centered.
4. When ready to remove engine, turn release valve clockwise until firm. Pump handle until load is securely supported by crane.
5. Remove engine, then immediately transfer the engine to appropriate engine support device (engine stand).
6. Check to ensure stand is secure before working on or around.

WARNING

- Never extend leg extensions beyond factory marked position on each leg.
- Extend each leg extension an equal distance from frame.
- Never extend boom extension beyond furthest distance of leg extensions.
- Failure to heed these markings may result in personal injury and/or property damage.

SAFETY MESSAGE

Be sure all tools and personnel are clear before lowering load. No alterations shall be made to this device. Only attachments and/or adapters supplied by the manufacturer shall be used.

MAINTENANCE

Important: Use only a good grade **hydraulic jack oil**. Avoid mixing different types of fluid and NEVER use brake fluid, turbine oil, transmission fluids, motor oil or glycerin. Improper fluid can cause failure of the ram. and the potential for sudden and immediate loss of load.

Adding oil

1. With ram fully lowered and handle sleeve fully depressed, carefully remove from crane. Set ram in an upright, level position. Remove oil filler plug.
2. Fill with hydraulic oil until just below the rim of the oil filler plug hole. Reinstall the oil filler plug.

Changing oil

For best performance and longest life, replace the complete hydraulic oil supply at least once per year.

1. With ram fully lowered and handle sleeve fully depressed, remove jack from crane body. With ram in it's upright, level position, remove oil filler plug.
2. Lay the ram on its side and drain the oil into a suitable container.

Note: Dispose of hydraulic oil in accordance with local regulations.

3. Set ram in it's upright, level position.
4. Fill with hydraulic oil until just below the rim of the oil filler plug hole. Reinstall the oil filler plug.

Lubrication

A periodic coating of light lubricating oil to pivot points, axles and hinges will help to prevent rust and assure that casters and pump assemblies move freely.

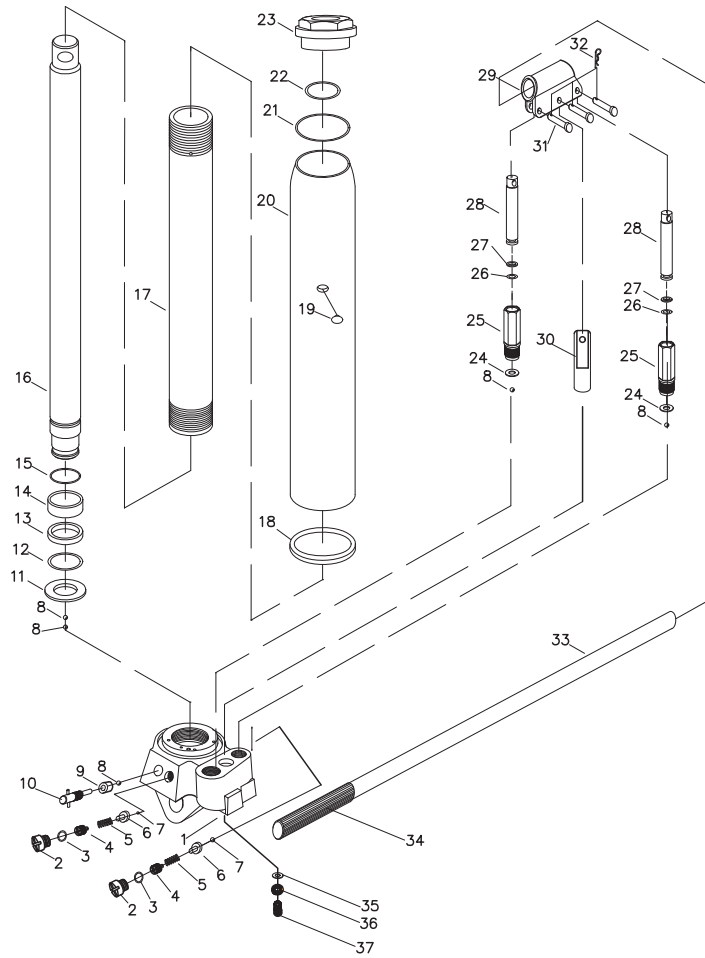
Cleaning

Periodically check the pump piston and ram for signs of rust or corrosion. Clean as needed and wipe with an oily cloth.

Note: Never use sandpaper or abrasive material on these surfaces !

REPLACEMENT PARTS

Not all components of this product are replacement items, but are illustrated as a convenient reference for position in the assembly sequence. When ordering parts, give model number, part number and description. Call your distributor for current pricing.



Item	Description	Qty
1	Base	1
2	Safety valve cover	2
3	O-ring	2
4	Safety valve screw	2
5	Adjustment spring	2
6	Stoper	2
7	Steel ball	2
8	Steel ball	5
9	Release valve seal	1
10	Release valve	1
11	Cylinder iron washer	1
12	O-ring	1
13	Bowl type seal	1
14	Piston head	1
15	Retainer	1
16	Piston rod	1
17	Inner tube	1
18	Outer tubet seal	1
19	Oil fill plug	1

Item	Description	Qty
20	Outer tube	1
21	Rectangle seal	1
22	O-ring	1
23	Top cap	1
24	Pump washer	2
25	Pump assembly	2
26	O-ring	2
27	Retainer	2
28	Pump piston	2
29	Handle sleeve	1
30	Connecting rod	1
31	Pin	3
32	Split pin	3
33	Handle	1
34	Handle cover	1
35	Flat washer	1
36	Spring washer	1
37	Screw	1



WARRANTY
1 YEAR LIMITED WARRANTY

THIS WARRANTY AND CONFIRMED RECEIPT(S) SHOULD BE RETAINED BY THE CUSTOMER AT ALL TIMES

PURCHASED FROM: _____

DATE PURCHASED: _____

INVOICE/RECEIPT NUMBER: _____

Your ATD-7487 is warranted for a period of 12 months from the original purchase date.

For a period of one (1) year from your purchase date, ATD Tools Inc. will repair or replace (at its option) without charge, your ATD product if it was purchased new and the product has failed due to a defect in material or workmanship which you experienced during normal use of the product. This limited warranty is your exclusive remedy.

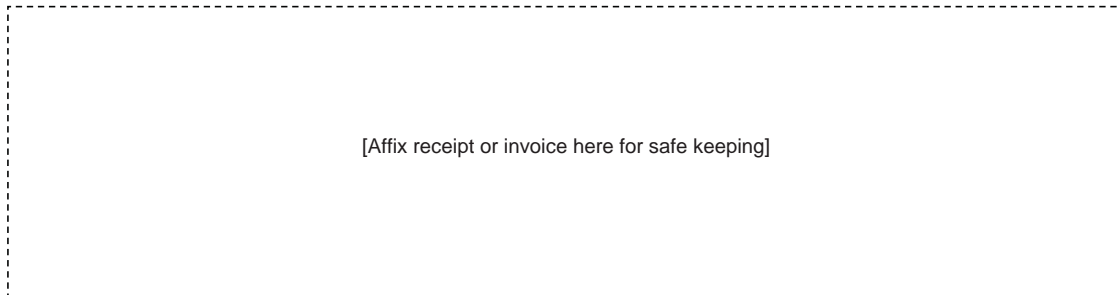
To access the benefits of this warranty, contact your supplier, or point of sale directly. You may be advised to return the product under warranty, freight prepaid, to your supplier for warranty determination.

If this ATD product is altered, abused, misused, modified, or undergoes service by an unauthorized technician, your warranty will be void. We are not responsible for damage to ornamental designs you place on this ATD product and such ornamentation should not cover any warnings or instructions or they may void the warranty. This warranty does not cover scratches, superficial dents, and other abrasions to the paint finish that occur under normal use. It also does not cover normal wear items such as but not limited to brushes, batteries, drill bits, drill chucks, pads or blades.

Subject to the law in your state:

- (1) Your sole and exclusive remedy is repair or replacement of the defective product as described above.
- (2) ATD is not liable for any incidental damages, including but not limited to, lost profits and unforeseeable consequences.
- (3) The repair and replacement of this product under the express limited warranty described above is your exclusive remedy and is provided in lieu of all other warranties, express or implied. All other warranties, including implied warranties and warranties of merchantability or fitness for a particular purpose are disclaimed and, if disclaimer is prohibited, these warranties are limited to one year from your date of purchase of this product.

Some states' laws do not allow limited durations on certain implied warranties and some states' laws do not allow limitations on incidental or consequential damages. You should consult the law in your state to determine how your rights may vary.



[Affix receipt or invoice here for safe keeping]