



ATD-7486A 8-Ton Hydraulic Long Ram Owner's Manual



Features:

- Flat base and clevis pin adapter allows mounting on virtually all 2-ton engine cranes
- Machined and polished cylinders provide non-abrasive, leak-free, durable performance
- Hydraulic system is protected from internal damage by built-in bypass mechanism

Specifications:

- Capacity (Ton): 8
- Minimum Height: 24-1/16"
- Maximum Height: 43-11/16"
- Base Size: 4-3/4" x 4-3/4"
- Ram Piston Hole Diameter: 5/8"
- Shipping Weight: 33 lbs.

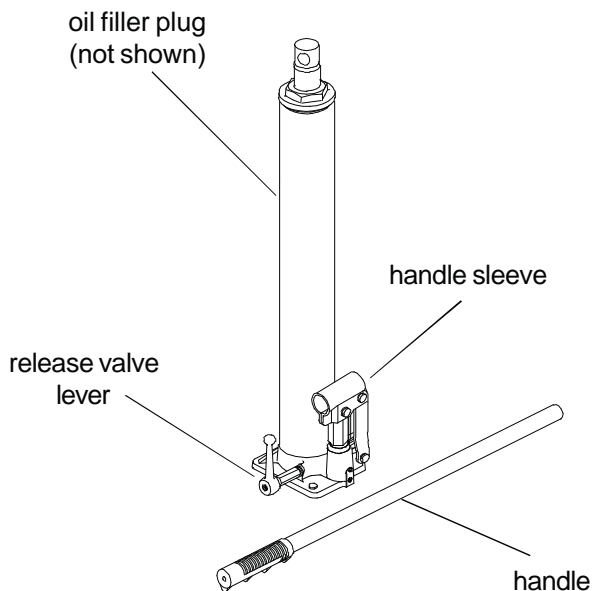
Save these instructions. For your safety, read and understand the information contained within. The owner and operator should have an understanding of this product and safe operating procedures before attempting to use this product. Instructions and safety information shall be conveyed in the operator's native language before use of this product is authorized. Make certain that the operator thoroughly understands the inherent dangers associated with the use and misuse of the product. If any doubt exists as to the safe and proper use of this product as outlined in this factory authorized manual, remove from service until which time it is clear. **Inspect before each use.** Do not use if broken, bent, cracked or otherwise damaged parts are noted. If the jack has been or suspected to have been subjected to a shock load, discontinue use until checked out by an authorized factory service center. Owners and operators of this equipment should be aware that the use and subsequent repair of this equipment may require special training and knowledge. It is recommended that an annual inspection be done by qualified personnel and that any missing or damaged parts, decals, warning / safety labels or signs be replaced with factory authorized replacement parts only. Any jack that appears to be damaged in any way, is worn or operated abnormally should be removed from service immediately until such time as repairs can be made.

PRODUCT DESCRIPTION

ATD Tools Hydraulic Long Ram is designed to be used with corresponding ATD Tools Engine Cranes. Its intended use is as an aid in the removal and installation of vehicle component parts and assemblies, particularly vehicle engines and those vehicle transaxles designed to be removed from above the engine compartment.

SPECIFICATIONS

Model	Capacity	Base Size (L x W)	Min. Height	Max. Height
ATD-7486A	8 Ton	4-3/4" x 4-3/4"	24-1/16"	43-11/16"



⚠ WARNING

DO NOT USE AS AN INDEPENDENT LIFTING DEVICE. DO NOT OVERLOAD BEYOND RATED CAPACITY. AVOID SHOCK LOADS CAUSED BY RAPIDLY OPENING AND CLOSING RELEASE VALVE. DO NOT OPEN OIL FILLER PLUG UNLESS RAM IS FULLY LOWERED. MOVE OR DOLLY THE LOAD WITH CRANE IN LOWEST POSITION ONLY AND THEN ONLY ON HARD LEVEL SURFACES CAPABLE OF SUSTAINING THE LOAD. ENSURE THAT ALL MOUNTING HARDWARE IS TIGHT BEFORE USING. READ AND UNDERSTAND ALL INSTRUCTIONS PROVIDED WITH THIS JACK. FAILURE TO HEED THESE WARNINGS MAY RESULT IN LOSS OF LOAD, PERSONAL, EVEN FATAL INJURY AS WELL AS PROPERTY DAMAGE.

Figure 1 - Model ATD-7486A nomenclature

OPERATION

1. Secure jack to suitable engine crane. Locate and close release valve by turning lever clockwise firmly.
2. Operate by pumping handle until engine crane hook reaches desired position.
3. Lower hook by gently turning the release valve lever counter clockwise, **never more than 1/2 turn**. The release valve system is metered, so please be careful when lowering load.

CAUTION

BE SURE ALL TOOLS AND PERSONNEL ARE CLEAR BEFORE LOWERING LOAD. DANGEROUS DYNAMIC SHOCK LOADS ARE CREATED BY QUICKLY OPENING AND CLOSING THE RELEASE VALVE AS THE LOAD IS BEING LOWERED. THE RESULTING OVERLOAD MAY CAUSE HYDRAULIC SYSTEM FAILURE WHICH COULD CAUSE SEVERE PERSONAL INJURY AND/OR PROPERTY DAMAGE.

MAINTENANCE

Important: Use only a good grade hydraulic jack oil. Avoid mixing different types of fluid and NEVER use brake fluid, turbine oil, transmission fluid, motor oil or glycerin. Improper fluid can cause premature failure of the jack and the potential for sudden and immediate loss of load.

Adding Oil:

1. With ram fully lowered and pump piston fully depressed, set jack in its upright, level position. Carefully remove from crane. Remove oil filler plug.
2. Fill until oil is level with the filler plug hole, re-install oil filler plug.

Changing Oil:

For best performance and longest life, replace the complete fluid supply at least once per year.

1. With ram fully lowered and pump piston fully depressed, remove the oil filler plug.
2. Lay the jack on its side and drain the fluid into a suitable container.

Note: Dispose of hydraulic fluid in accordance with local regulations.

3. Set jack in its level upright position.
4. Fill with good quality jack oil. We recommend Mobil DTE 13 or equivalent. Reinstall oil filler plug.

Lubrication

1. A coating of light lubricating oil to pivot points, axles and hinges will help to prevent rust and assure that wheels, casters and pump assemblies move freely.
2. Periodically check the pump piston and ram for signs of rust or corrosion. Clean as needed and wipe with an oily cloth.

NEVER USE SANDPAPER OR ABRASIVE MATERIAL ON THESE SURFACES!

3. When not in use, store the jack with pump piston and ram fully retracted.

TROUBLESHOOTING

Symptom	Possible Causes	Corrective Action
Jack will not lift load	Release valve not tightly closed Overload condition	Ensure release valve tightly closed Remedy overload condition
Jack bleeds off after lift	Release valve not tightly closed Overload condition Hydraulic unit malfunction	Ensure release valve tightly closed Remedy overload condition Contact Tech. Service (636) 327-9050
Jack will not lower after unloading	Reservoir overfilled Linkages binding	Drain fluid to proper level Clean and lubricate moving parts
Poor lift performance	Fluid level low Air trapped in system	Ensure proper fluid level With ram fully retracted, remove oil filler plug to let pressurized air escape, reinstall oil filler plug
Will not lift to full extension	Fluid level low	Ensure proper fluid level

REPLACEMENT PARTS

Available Parts: Please refer to the parts drawing when ordering parts. Not all components of the jack are replacement items, but are illustrated as a convenient reference of location and position in the assembly sequence. When ordering parts, give model number, serial number and description below. Call your distributor for current pricing.

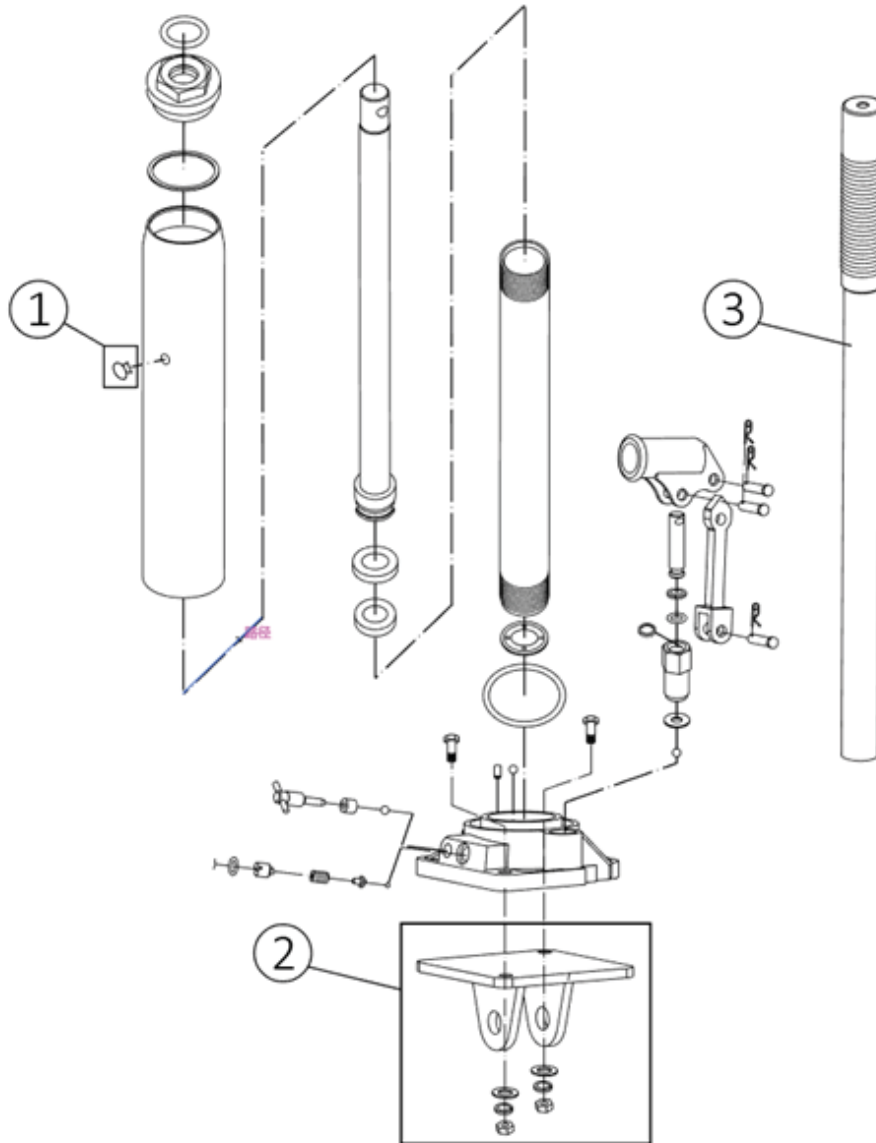


Figure 2 - Replacement Parts Illustration for model ATD-7486A

Item	Part Number	Description	Qty
1	LYQ2D.5-5A	Oil Filler Plug	1
2	DJ1C.10	Clevis Mounting Bracket	1
3	DJ1C.4	Pump Handle	1



ATD[®]

WARRANTY

1 YEAR LIMITED WARRANTY

THIS WARRANTY AND CONFIRMED RECEIPT(S) SHOULD BE RETAINED BY THE CUSTOMER AT ALL TIMES

PURCHASED FROM: _____

DATE PURCHASED: _____

INVOICE/RECEIPT NUMBER: _____

Your ATD-7486A is warranted for a period of 12 months from the original purchase date.

For a period of one (1) year from your purchase date, ATD Tools Inc. will repair or replace (at its option) without charge, your ATD product if it was purchased new and the product has failed due to a defect in material or workmanship which you experienced during normal use of the product. This limited warranty is your exclusive remedy.

To access the benefits of this warranty, contact your supplier, or point of sale directly. You may be advised to return the product under warranty, freight prepaid, to your supplier for warranty determination.

If this ATD product is altered, abused, misused, modified, or undergoes service by an unauthorized technician, your warranty will be void. We are not responsible for damage to ornamental designs you place on this ATD product and such ornamentation should not cover any warnings or instructions or they may void the warranty. This warranty does not cover scratches, superficial dents, and other abrasions to the paint finish that occur under normal use. It also does not cover normal wear items such as but not limited to brushes, batteries, drill bits, drill chucks, pads or blades.

Subject to the law in your state:

- (1) Your sole and exclusive remedy is repair or replacement of the defective product as described above.
- (2) ATD is not liable for any incidental damages, including but not limited to, lost profits and unforeseeable consequences.
- (3) The repair and replacement of this product under the express limited warranty described above is your exclusive remedy and is provided in lieu of all other warranties, express or implied. All other warranties, including implied warranties and warranties of merchantability or fitness for a particular purpose are disclaimed and, if disclaimer is prohibited, these warranties are limited to one year from your date of purchase of this product.

Some states' laws do not allow limited durations on certain implied warranties and some states' laws do not allow limitations on incidental or consequential damages. You should consult the law in your state to determine how your rights may vary.

[Affix receipt or invoice here for safe keeping]

