



ATD-7479B
1,250 lbs. Foldable Engine Stand
With Geared 360° Rotatable Head
Owner's Manual



Features:

- ATD Engine Stands are constructed from heavy-gauge, welded, square tubular steel and feature extra-long handles with rubber grip for easy rotation and maneuvering
- 63:1 gear ratio for effortless engine rotation
- Equipped with 360 degree swivel head
- Vertically foldable design for space saving
- 6 Swivel casters allow easy movement
- Meets or exceeds ASME PASE-2019 standards

Specifications:

- Capacity: 1,250 lbs.
- Overall Height: 40.2"
- Base Size: 41.2" x 27.4"
- Wheel Diameter (front & rear): 3.5"
- Wheel Diameter (middle): 3"
- Head Plate Thickness: .57"
- Net Weight: 102.5 lbs.

SAFETY AND GENERAL INFORMATION

Save these instructions. For your safety, read, understand, and follow the information provided with and on this engine stand before using. The owner and/or operator of this equipment should have an understanding of engine stand use and safe operating procedures before attempting to use. The owner and operator should be aware that the use and repair of this product may require special skills and knowledge. Instructions and safety information shall be conveyed in the operator's native language before use of this engine stand is authorized. If any doubt exists as to the safe and proper use of this product, remove from service immediately.

Inspect before each use. Do not use if broken, bent, cracked or damaged parts (including labels) are noted. Any engine stand that appears damaged in any way, or operates abnormally or is missing parts shall be removed from service immediately. If you suspected that the engine stand was subjected to a shock load (a load dropped suddenly, unexpectedly upon it), immediately discontinue use until it has been checked by a service center. It is recommended that an annual inspection be done by qualified personnel. Labels and owner's manuals are available from the manufacturer. Contact your distributor to obtain them.

PRODUCT DESCRIPTION

This Engine Stand is designed to safely support a rated capacity engine during the time that the engine is being rebuilt or repaired. This engine stand complies with applicable ASME/PASE 2019 Standards.

WARNING: Do not use this device for any purpose other than that for which it is expressly intended.

SPECIFICATIONS

Model	Capacity	Base Size (L x W)	Overall Height	Head Plate Dimensions (L x H x Thickness)	Wheel Diameter (Front&Rear&Middle)
ATD-7479B	1250 lbs.	41.2" x 27.4"	40.2"	(6.63" - 10.69") x 7.19" x .57"	3.5" & 3.5" & 3"

CAUTION: READ CAREFULLY BEFORE UNPACKING PRODUCT.

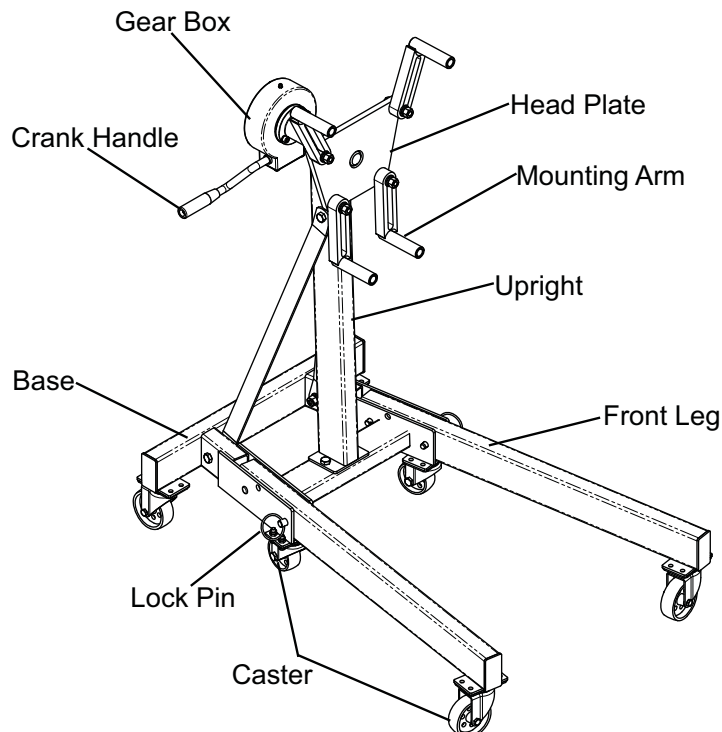
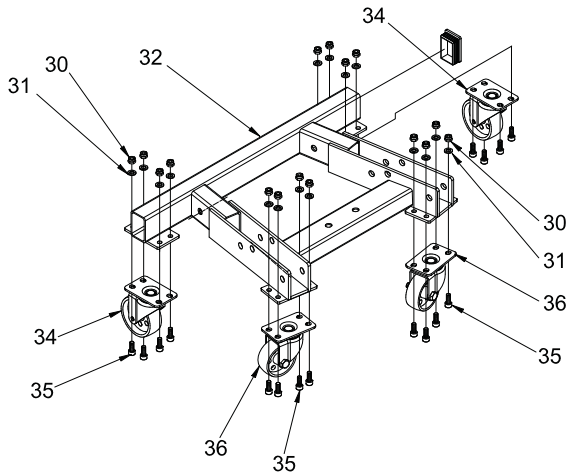


Figure 1 - Model ATD-7479B Components

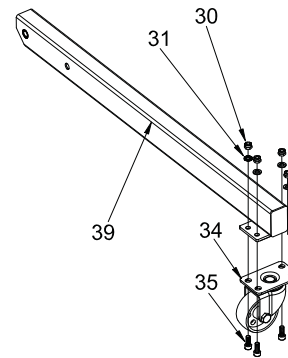
ASSEMBLY

For best results, assemble this unit on a hard, flat surface, clear of clutter and debris. Keep children away from the work area. FINGER TIGHTEN all nuts and bolts until the unit is completely assembled then place the stand on a hard, flat surface (such as your shop or garage floor) and tweak the alignment of the frame and components before tightening all nuts and bolts.

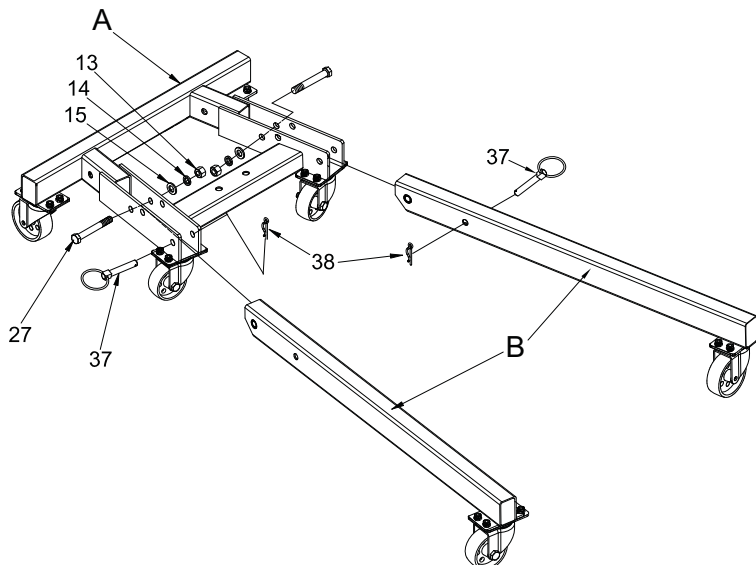
Step 1: ASSEMBLY A - Attach the rear 4 casters (34) 3.5" caster, and (36) 3" caster to the chassis, (32). Secure with Bolt (35) Flat Washer (31) and Nut (30).



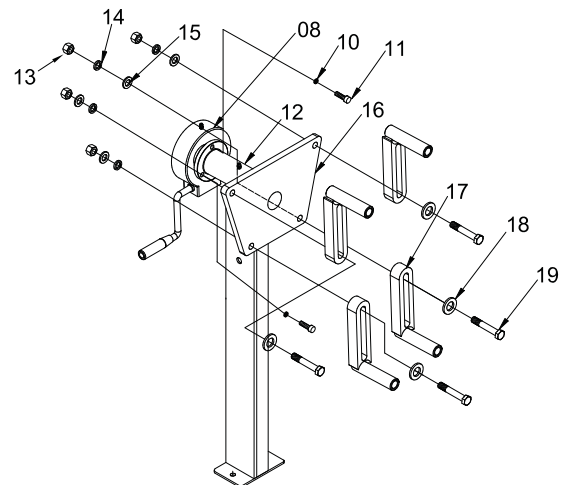
Step 2: ASSEMBLY B - Attach the front 2 casters (34) to the front legs (39). Secure with Bolt (35) Flat Washer (31) and Nut (30).



Step 3: ASSEMBLY C - Secure ASSEMBLY B to ASSEMBLY A using Bolt (27), Flat Washer (15) Lock Washer (14) Nut (13), Lock Pin (37) and R-Pin (38).

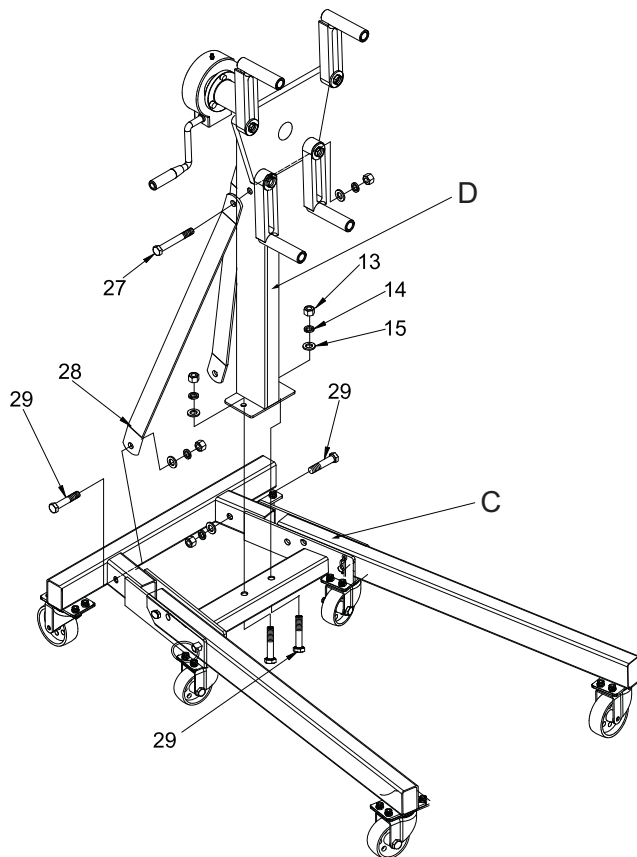


Step 4: ASSEMBLY D - Attach the Mounting Arm (17) to the Head Plate (16) using Bolt (11), Lock Washer (10), Flat Washer (15) Lock Washer (14), and Nut (13)

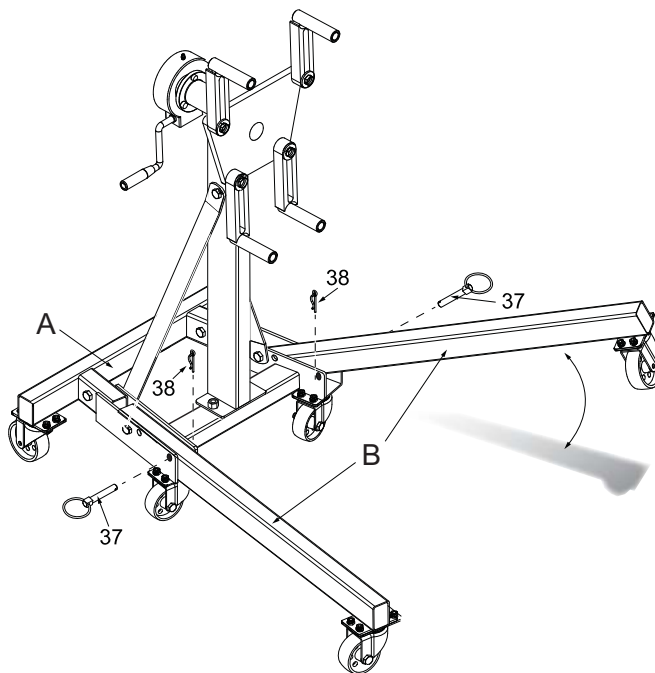


Step 5: Mount **ASSEMBLY D** to **ASSEMBLY C** using using Bolt (29), Flat Washer (15) Lock Washer (14), and Nut (13). Attach Brace (28) to **ASSEMBLY D** and **ASSEMBLY C** using using Bolt (27), Bolt (29), Flat Washer (15), Lock Washer (14) and Nut (13).

Now you may place the stand on a hard, flat surface (such as your shop or garage floor) and tweak the alignment of the frame and components and tighten all nuts and bolts.



Step 6: To fold for storage, remove R-Pins (38), and Lock Pins (37) from both legs (B). Carefully fold legs (B) up. Slide Lock Pins (#37) back into the front holes of the Chassis (A) and secure with R-Pins (38).



BEFORE USE

1. Before using this product, read the owner's manual completely and familiarize yourself thoroughly with the product and the hazards associated with its improper use
2. Verify that the product and the application are compatible.
3. Inspect engine stand before each use. Do not use if there are bent, broken or cracked components (including labels).
4. Ensure that casters/ wheels and adapter plate rotate freely. Check for and tighten any loose assemblies.

! WARNING

- **Study, understand, and follow all instructions** provided with/on this device before use.
- **Do not** exceed rated capacity.
- Use **only** on a hard, level surface.
- Your ATD-7479B does not have a rotating mechanism lock. **Extraordinary** care must be taken to ensure load does not rotate when using.
- Use **only** hardened, appropriately sized bolts to secure engine to stand.
- Ensure engine is centered and secured to the head plate. Off-center loading may cause the engine to rotate unexpectedly and cause the loaded stand to tip over.
- Apply rotating mechanism slowly and carefully.
- Do not modify or substitute hardware on this device.
- Only attachments and/ or adapters supplied by the manufacturer should be used.
- Do not use the device for any purpose other than that for which it is intended.
- **Failure to heed these warnings may result in personal injury and/or property damage.**

! WARNING

To avoid **crushing and related injuries**:



NEVER work on, under or around a load supported only by an engine stand. **ALWAYS** use adequately rated engine stand.

OPERATION

! WARNING: ALWAYS verify that the product and the application are compatible. **NEVER** load the engine stand with an engine that extends beyond an imaginary line drawn connecting the centerlines of the front and rear wheel/ caster axles as show in Fig 2.

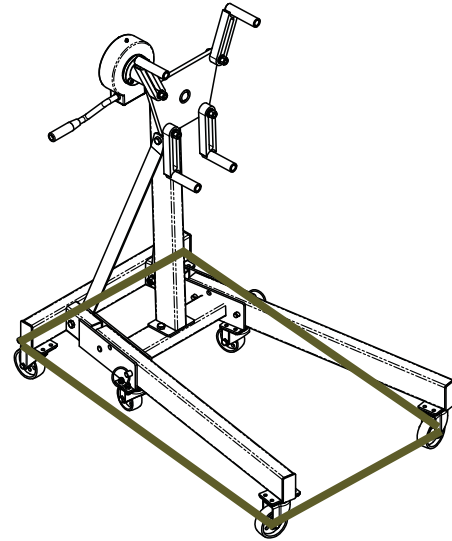


Figure 2 - Peripheral Loading Limit of Engine Stand

! WARNING: Ensure Lock pins are installed and secured in front legs (as shown in fig. 1) before loading!

1. Ensure application is compatible with product.
2. Align engine with stand, then adjust mounting arms to match bell housing mounting bolt holes.
3. Carefully secure engine so that load is centered on stand. Secure with hardened bolts and flat washers. Ensure threads are compatible with your engine, and use washers on both sides of head plate.
4. For model ATD-7479B, slowly and carefully engage the crank handle (see Fig. 1). **Use precaution when rotating as this model does not contain a rotating mechanism lock.**
5. Check to ensure the stand is secure before working on or around stand. Never work under loaded stand.

NOTICE: Use only the handle provided by the manufacturer. The handle provided with this stand will safely engage and operate the head plate. If the handle is worn, bent, or otherwise damaged, **STOP**, discontinue use of the stand until a factory replacement handle assembly can be acquired.

MAINTENANCE

Periodically inspect each stand. Ensure all parts move freely. Lubricate the casters periodically. To help prevent rust, wipe clean after each use.

STORAGE

Store your ATD-7479B engine stand in clean, dry environment.

REPLACEMENT PARTS

Not all components of the jack are replacement items, but are illustrated as a convenient reference for position in the assembly sequence. When ordering parts, give model number, part number and description. Call your distributor for current pricing:

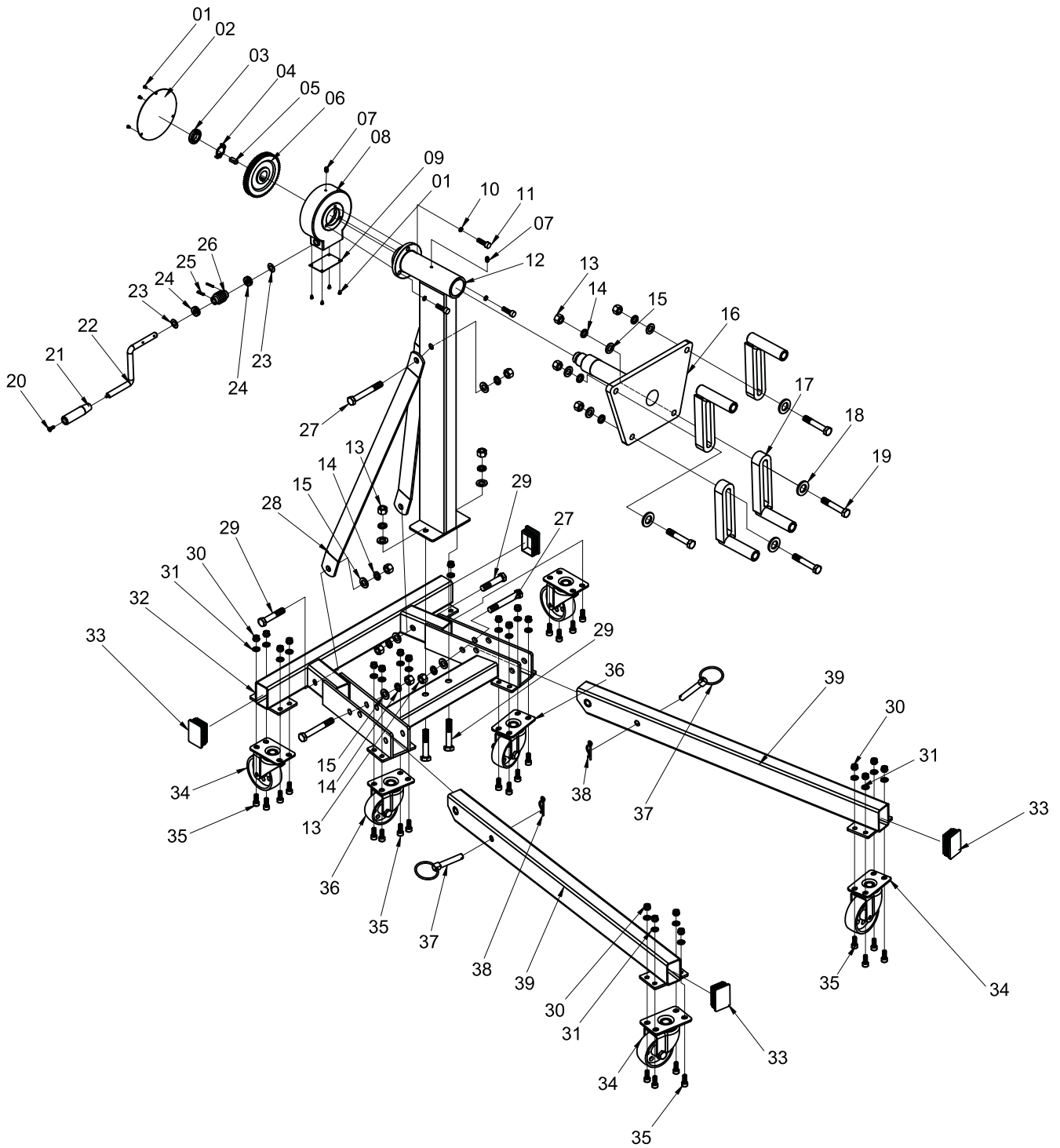


Figure 3 - Replacement Parts Illustration for model ATD-7479B

ITEM#	ORDERING PART#	PART DESCRIPTION	QTY
1	PRT7479B-01-11 GEAR BOX ASSEMBLY	SCREW	7
2		GEAR BOX CAP	1
3		NUT	1
4		WASHER	1
5		FLAT KEY	1
6		WORM GEAR	1
7		FITTING	2
8		GEAR BOX	1
9		CAP	1
10		LOCK WASHER	3
11		SCREW	3
12	PRT7479B-12	VERTICAL TUBE	1
13	PRT7479B-13-19 HEAD PLATE ASSEMBLY W/ MOUNTING ARMS	NUT*	11
14		LOCK WASHER*	11
15		FLAT WASHER*	11
16		HEAD PLATE	1
17	PRT7479B-17-19 MOUNTING ARM ASSEMBLY	MOUNTING ARM	4
18		WASHER*	4
19		BOLT*	4
20	PRT7479B-20-22 HANDLE ASSEMBLY	SCREW	1
21		HANDLE GRIP	1
22		HANDLE	1
23	PRT7479B-23	WASHER	2
24	PRT7479B-24	BEARING	2
25	PRT7479B-25	PIN	2
26	PRT7479B-26	WORM GEAR	1
27	PRT7479B-HK	BOLT*	3
28	PRT7479B-28	BRACE	2
29	PRT7479B-HK	BOLT*	4
30	PRT7479B-HK	NUT*	24
31	PRT7479B-HK	WASHER*	24
32	PRT7479B-32	CHASSIS	1
33	PRT7479B-33	END CAP	4
34	PRT7479B-34	CASTER, 3-1/2"	4
35	PRT7479B-HK	SCREW*	24
36	PRT7479B-36	CASTER, 3"	2
37	PRT7479B-37	LOCK PIN	2
38	PRT7479B-38	R-PIN	2
39	PRT7479B-39	FRONT LEG	2
*	PRT7479B-HK	HARDWARE KIT	1

* - PRT7479B-HK - HARDWARE KIT CONTAINS #13, #14, #15, #18, #19, #27, #29, #30, #31, #35



WARRANTY
1 YEAR LIMITED WARRANTY

THIS WARRANTY AND CONFIRMED RECEIPT(S) SHOULD BE RETAINED BY THE CUSTOMER AT ALL TIMES

PURCHASED FROM: _____

DATE PURCHASED: _____

INVOICE/RECEIPT NUMBER: _____

Your ATD-7479B is warranted for a period of 12 months from the original purchase date.

For a period of one (1) year from your purchase date, ATD Tools Inc. will repair or replace (at its option) without charge, your ATD product if it was purchased new and the product has failed due to a defect in material or workmanship which you experienced during normal use of the product. This limited warranty is your exclusive remedy.

To access the benefits of this warranty, contact your supplier, or point of sale directly. You may be advised to return the product under warranty, freight prepaid, to your supplier for warranty determination.

If this ATD product is altered, abused, misused, modified, or undergoes service by an unauthorized technician, your warranty will be void. We are not responsible for damage to ornamental designs you place on this ATD product and such ornamentation should not cover any warnings or instructions or they may void the warranty. This warranty does not cover scratches, superficial dents, and other abrasions to the paint finish that occur under normal use. It also does not cover normal wear items such as but not limited to brushes, batteries, drill bits, drill chucks, pads or blades.

Subject to the law in your state:

- (1) Your sole and exclusive remedy is repair or replacement of the defective product as described above.
- (2) ATD is not liable for any incidental damages, including but not limited to, lost profits and unforeseeable consequences.
- (3) The repair and replacement of this product under the express limited warranty described above is your exclusive remedy and is provided in lieu of all other warranties, express or implied. All other warranties, including implied warranties and warranties of merchantability or fitness for a particular purpose are disclaimed and, if disclaimer is prohibited, these warranties are limited to one year from your date of purchase of this product.

Some states' laws do not allow limited durations on certain implied warranties and some states' laws do not allow limitations on incidental or consequential damages. You should consult the law in your state to determine how your rights may vary.

[Affix receipt or invoice here for safe keeping]