



## **ATD-7475**

# **1,500 Lbs. Mechanical Vehicle Positioning Jack**

### **Owner's Manual**



#### **Features:**







- Foot pedal ratcheting lift allows for hands free operation
- Perfect for moving vehicles around the shop
- Convenient carrying handle
- Optional ATD-7474 Storage Rack holds up to (4) ATD-7475 jacks
- Meets or exceeds ASME/PASE 2019 standards

#### **Specifications:**

- Fits tires up to 13" wide and 32" in diameter
- (4) Heavy-duty needle bearing swivel casters; (2) locking
- Capacity: 1,500 lbs each
- Minimum Opening: 13.38"
- Maximum Opening: 28"

## WARNING

Read **ALL** the instructions and warnings before attempting to operate this jack.

-  **DO NOT** operate jack on inclined surfaces. Jack must be used on level surfaces only. Unanticipated motion will occur as soon as jack lifts tire from surface.
-  **DO NOT** overload jack beyond the load rating (1500 lbs per unit)
-  **DO NOT** start the vehicle's engine, or drive with jack in use. Jacks are designed for hand maneuvering of vehicles only.
-  **DO NOT** use jack to lift tires wider than 13 inches.
-  **DO NOT** attempt to push jack over obstacles. They are designed to be used on level surfaces only.
-  After lifting, be sure always lock the pin in place before operating. Pull the pin out after finishing work and then release the valve.

## ASSEMBLY INSTRUCTIONS:

1. Unpack the positioning jacks making sure that all of the parts and pieces have been included.
2. Find both of the rod assemblies (3) for each positioning jack. Be prepared to attach one to the ratchet assembly (6) and the other to the receiver assembly (13).
3. Insert the rod assembly (3) into the roller (5).
4. Press the rod assembly (3) into the ratchet assembly (6). Use the flat washer (7), lock washer (8) and bolt (9) to secure everything in place. Repeat this with the other rod assembly (3) and the receiver assembly (13).
5. Install caster with lock (10) to ratchet assembly (6) and receiver assembly (13) using nut (1).

## OPERATION INSTRUCTIONS

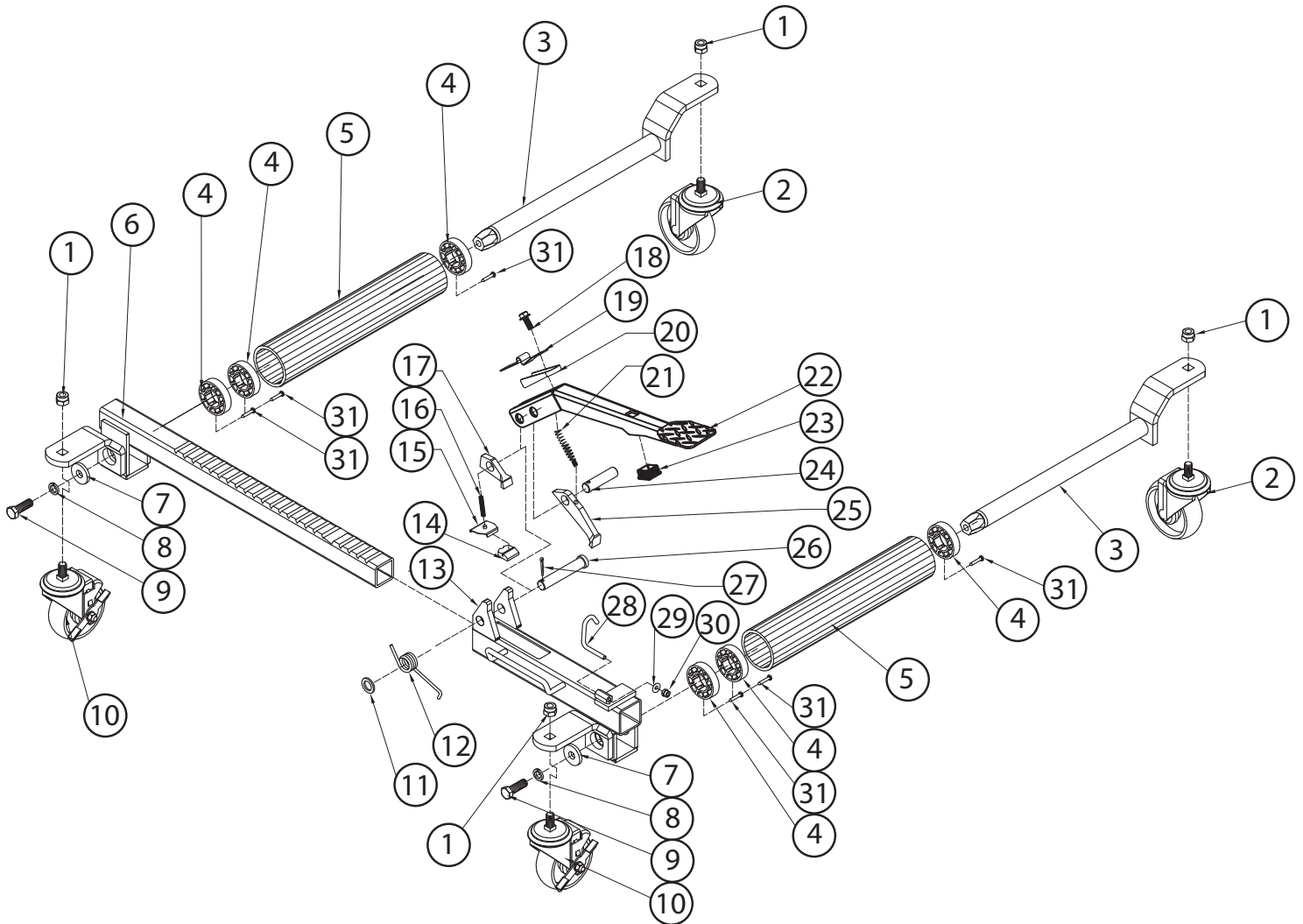
Before operating the positioning jack, make sure that all the hardware is secure, and that each unit has been tested properly.

1. Make sure that the vehicle being lifted is located on a solid flat surface.
2. Slide the positioning jack around the tire so that the rollers (5) are perpendicular to the tire. Make sure that each tire has a positioning jack around it before raising.
3. To raise each tire, pump each foot pedal (22) so that the rollers (5) move together and lift the tire off the ground.
4. **IMPORTANT:** Once raised to the desired height, press the foot pedal (22) down and swing the pedal latch (28) up to secure the foot pedal (22) in place.
5. Once all four tires are resting on the positioning jacks, the vehicle can be pushed into the desired location.
6. To lower the vehicle, flip lever (20) down and pump foot pedal (22) until the weight of the vehicle begins to spread the rollers (5) apart allowing the tire to rest on the ground.
7. Remove the positioning jacks from each tire and secure the foot pedal (22) with the pedal latch (28).
8. Apply the locking function on the caster (10) when it is necessary.

**IMPORTANT:** Install jack so that the unit is parallel to the sidewall of the tire to be lifted. Leave approximately 3/4" of clearance between tire and jack. If unit is misaligned, it is possible that the tire will be forced to hit the axle of the jack and not the rollers. This may damage the jack and will void the warranty.

## REPLACEMENT PARTS

Not all components of this product are replacement items, but are illustrated as a convenient reference for position in the assembly sequence. When ordering parts, give model number, part number and description. Call your distributor for current pricing:



ITEM#	ORDERING PART#	PART DESCRIPTION
1	PRT7475-01-02	NUT
2	PRT7475-01-02	CASTER (1, 2)
3	PRT7475-03-09	ROD ASSEMBLY (3, 7, 8, 9)
4	PRT7475-04-31	BLOCK ASSEMBLY (4, 5, 31)
5	PRT7475-04-31	ROLLER
6	PRT7475-06	RATCHET ASSEMBLY
7	PRT7475-03-09	FLAT WASHER
8	PRT7475-03-09	LOCK WASHER
9	PRT7475-03-09	BOLT
10	PRT7475-01-10	CASTER WITH LOCK (1, 10)
11	PRT7475-11	FLAT WASHER
12	PRT7475-12	SPRING
13	PRT7475-13	RECEIVER ASSEMBLY
14	PRT7475-14-27	LIMIT BLOCK
15		PLATE
16		SPRING

ITEM#	ORDERING PART#	PART DESCRIPTION
17	PRT7475-14-27	CLAW
18		BOLT
19		PLATE
20		FLIP LEVER
21		SPRING
22		FOOT PEDAL
23		END CAP
24		PIN
25		CLAW
26		PIN
27		COTTER PIN
28	PRT7475-28	PEDAL LATCH
29	PRT7475-29	O RING
30	PRT7475-30	NUT
31	PRT7475-04-31	SCREW (4, 5, 31)



**THIS WARRANTY AND CONFIRMED RECEIPT(S) SHOULD BE RETAINED BY THE CUSTOMER AT ALL TIMES**

PURCHASED FROM: \_\_\_\_\_

DATE PURCHASED: \_\_\_\_\_

INVOICE/RECEIPT NUMBER: \_\_\_\_\_

Your ATD-7475 is warranted for a period of 12 months from the original purchase date.

For a period of one (1) year from your purchase date, ATD Tools, Inc. will repair or replace (at its option) without charge, your ATD product if it was purchased new and the product has failed due to a defect in material or workmanship which you experienced during normal use of the product. This limited warranty is your exclusive remedy.

To access the benefits of this warranty, contact your supplier, or point of sale directly. You may be advised to return the product under warranty, freight prepaid, to your supplier for warranty determination.

If this ATD product is altered, abused, misused, modified, or undergoes service by an unauthorized technician, your warranty will be void. We are not responsible for damage to ornamental designs you place on this ATD product and such ornamentation should not cover any warnings or instructions or they may void the warranty. This warranty does not cover scratches, superficial dents, and other abrasions to the paint finish that occur under normal use. It also does not cover normal wear items such as but not limited to brushes, batteries, drill bits, drill chucks, pads or blades.

Subject to the law in your state:

- (1) Your sole and exclusive remedy is repair or replacement of the defective product as described above.
- (2) ATD is not liable for any incidental damages, including but not limited to, lost profits and unforeseeable consequences.
- (3) The repair and replacement of this product under the express limited warranty described above is your exclusive remedy and is provided in lieu of all other warranties, express or implied. All other warranties, including implied warranties and warranties of merchantability or fitness for a particular purpose are disclaimed and, if disclaimer is prohibited, these warranties are limited to one year from your date of purchase of this product.

Some states' laws do not allow limited durations on certain implied warranties and some states' laws do not allow limitations on incidental or consequential damages. You should consult the law in your state to determine how your rights may vary.

[Affix receipt or invoice here for safe keeping]