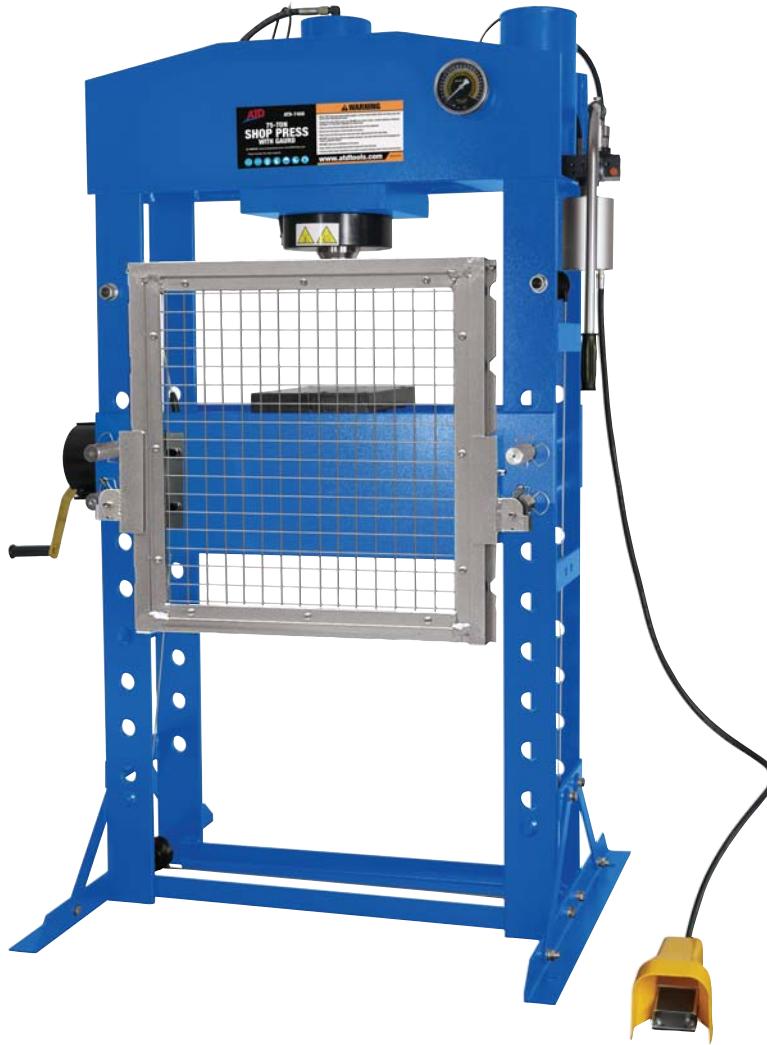




ATD-7458

75 Ton Shop Press With Guard

Owner's Manual



Features:

- Fully welded frame for maximum strength and durability
- Double speed pump for improved efficiency
- Foot control air valve allows effortless, hands free operation of air motor
- Cylinder can be moved left or right for applying pressure exactly where it's needed
- Self-locking hand winch for easier raising and lowering of the press bed
- 8 Position bed allows work height adjustment of 4" each
- Large oil filled anti shock pressure gauge with stainless steel frame scale for US and metric tons
- Patented safety valve for longer service life
- Includes a set of Non-Slip steel blocks for safer operation
- Includes protective work guard for added safety
- Meets or exceeds ASME/PASE 2019 standards

Specifications:

- Capacity: 75 Ton
- Hydraulic stroke: 9.88"
- Working Range: 6.63" to 34.75"
- Horizontal Ram Travel: 10.25"
- Bed Width: 31.5"
- Bed Positions: 8
- Press Size: 51.2" W x 31.5" D x 74.63" H
- Air Pressure: 110 to 120 psi
- N.W. Press with Guard: 1018.6 lbs.

Read this manual and follow all Safety Rules and Operating Instructions



The safety alert symbol is used to alert you to potential personal injury hazards. Obey all safety messages that follow this symbol to avoid possible injury or property damage.

SAFETY REQUIREMENTS

Make sure to read, understand, and strictly follow all safety related instructions before operation or maintenance of this press. This manual is to be made available to all persons who are required to install, configure or service the equipment herein, or any other associated operation.

PERSONNEL

Installation, operation and maintenance of this press should only be carried out by qualified personnel. A qualified person is someone who is technically competent and familiar with all safety information and established safety practices with the installation, operation and maintenance of this press, and with all the hazards involved.

SAFETY INSTRUCTIONS



Before using this press, the pressure in the system must be released. At the same time, DO NOT stand facing the air motor. The operator should be on the opposite side. Remember DO NOT strike, press or transfer until it is discharged. When it is necessary to exchange die after running, operators should wear gloves or use tools to operate, to avoid being hurt. NOTE: Immediately stop operating this press if it is not operating properly. Contact a certified technical support engineer for repair. This press must not be operated without approval from the certified technical support engineer.

This shop press includes a guard which brings a higher level of security. Always remember to use the guard for additional safety.

Specifications:

Rated Capacity	75 Tons
Working Range	6.63" to 34.75"
Stroke	9.88"
Bed Width	31.5"
Required Pressure	110 to 120 PSI

Prepare before Assembly



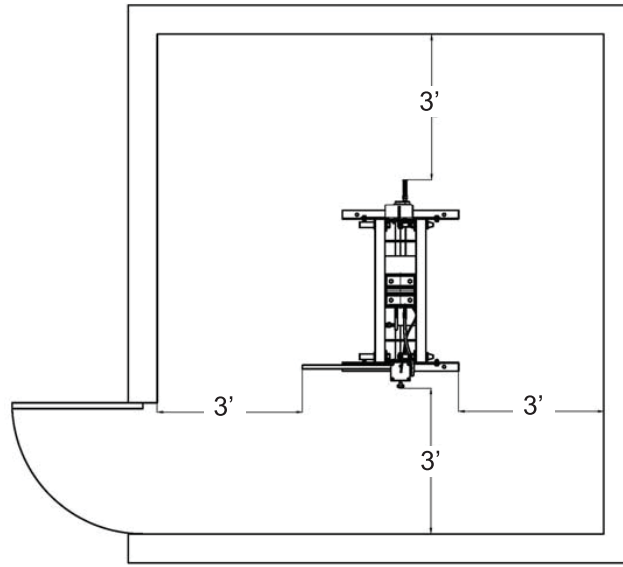
This press is generally too heavy to be moved by hand. Use the correct transport and lifting equipment, and follow the instructions as follows.

Working Area Conditions

Users should provide enough space for the equipment and the environment should be clean and free of clutter.

CAUTION

A working area of 3 feet is to be kept free both in front of and behind the press while it is in operation so that it is always easily accessible.



CAUTION

UNPACKING AND INSPECTION

When opening the packaging, be sure to use the proper tools, wear protective clothes, gloves and safety helmet. Make sure that the press and parts in the box are complete and identical with the parts list. If not, contact your distributor.

ASSEMBLY AND INSTALLATION

When this manual refers to a part number, it is referring to the reference number included on the parts list. Use the exploded drawing in the parts breakdown as a guide to assemble your press. Lay out all parts and assemblies in front of you before beginning. A second person will make several steps easier to carry out. Begin assembly on a horizontal surface. Use a forklift or crane to lift the press assembly out of the shipping case. The following procedure is recommended:

- 1) Disassemble the hex bolt, washer, spring washer, hex nut (#02 #06 #05 #04) from base (#1). Then assemble the base (#1) to the body frame (#43) by the above parts.
- 2) Disassemble the hex bolt, washer, spring washer, hex nut (#02 #06 #05 #04) from top of the base support (#03). Then assemble the 4 base supports (#03) to the body frame (#43) by the above parts.
- 3) Disassemble the pump assembly from the press frame. Then assemble the pump assembly onto the upper right of the press frame using bolt (#54) and flat washer (#15). (Figure 1)
- 4) Place nylon washer (#72) on gauge fitting (#51) and then attach the fitting to the pressure gauge (#50). Tighten this assembly to the gauge making sure that it is firmly attached, taking care not to over-tighten. Attach and tighten nut (#52) to gauge fitting (#51) to fix the pressure gauge onto the upper beam. (Figure 2) Rotate the gauge so that the scale shown on the face of the gauge is level and the type is easily readable.
- 5) Oil hose 1 (#56) assembly: Place O-Ring (#55) on the oil hose 1 (#56) and connect it to the fitting (#71) on the pump assembly (#53). (Figure 2).
- 6) Oil hose 2 (#57) assembly: Place the O-ring (#55) on gauge fitting (#51). Then connect the oil hose 2 (#57) to the gauge fitting (#51) and tighten. Connect the PU hose (#58) to hose fitting (#74) on the pump assembly (#53). Attach the handle (#64) to the pump handle socket using bolt (#66) and flat washer (#67). (Figure 2).
- 7) Move the hand winch (#12) from its shipping position to the outside of the post. Using the same hardware - bolt (#02), flat washer (#06), lock washer (#05), and nut (#04) to mount the winch to the outside frame using mounting bracket (#13). (Figure 3)
- 8) Assemble the 2 brackets (#78 and #79) to the working bed according to the exploded view by using screw, nut, lock washer and flat washer (#80). Insert the Grid Guard (#77) into the slot of the bracket (#78 and #79).
- 9) Test the unloaded press by operating both air and foot pump to drive the ram to full height, then lowering it.

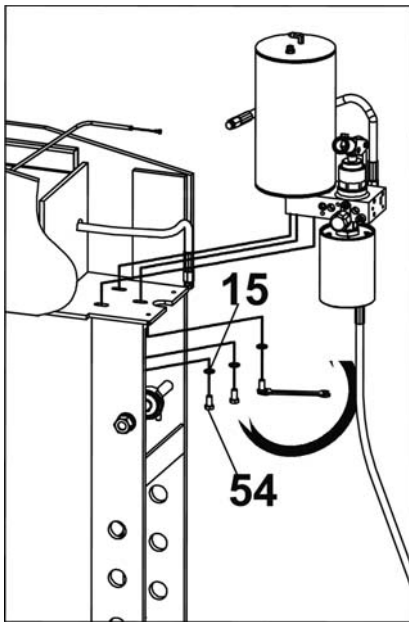


Figure 1

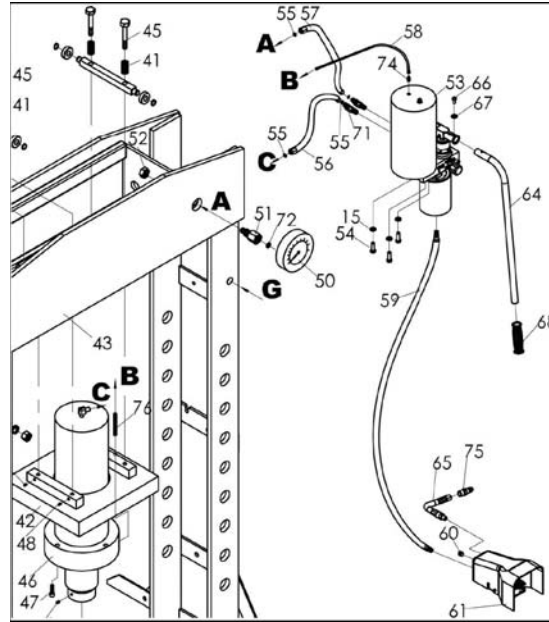


Figure 2

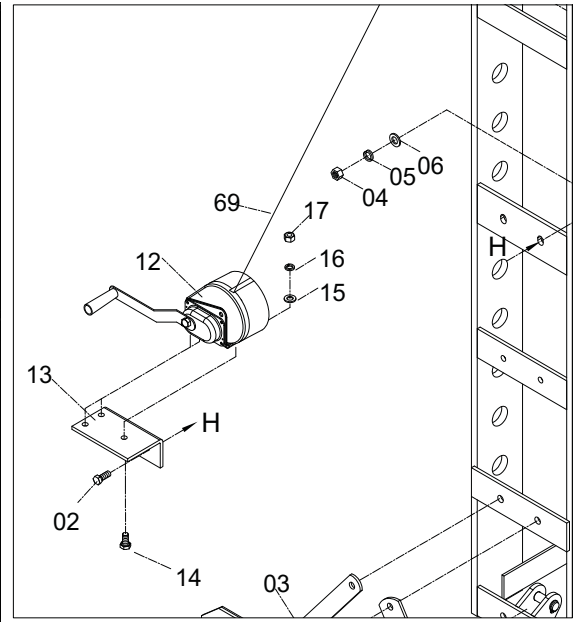


Figure 3

OPERATION

BEFORE FIRST USE

Before first use, check for proper oil level in the system. Then thoroughly test the hydraulic ram for proper operation prior to it's actual use.

Pour a teaspoon of good quality air tool lubricant into the air supply inlet of the lift control valve, connect the air supply and operate for three seconds to evenly distribute the lubricant.

Purge air from they hydraulic system. See bleeding the hydraulic system instructions in the maintenance section.

OPERATING THE SHOP PRESS

WARNING! Ensure that you read and understand and apply the safety instructions and warnings before first use.

1. Lift or lower the working bed (#31) with the hand winch (#12) until it is in position. Insert bed pins (#18) into the left and right posts to fix the working bed (#31).
2. Place the steel blocks (#32) on the working bed (#31) then insert a workpiece on the steel blocks.
3. Adjust the height of the guard (#77) to make sure it covers the working area.
4. Close the release valve (#P16) by turning it clockwise until it is firmly closed.
5. Connect the fitting (#75) on air foot valve (#61) to the shop air supply hose lock fitting. Depress the air foot valve (#61) to let the pump work until the serrated saddle (#R29) nears the workpiece then turn off the air valve.
6. When an air source is unavailable, pump the handle (#64) until the serrated saddle (#R29) nears the workpiece.
7. Align the workpiece and ram to ensure center-load.
8. Depress the air foot valve (#61) (or pump the handle (#64)) to apply load to the workpiece.
9. When the work is done, release the air foot valve (or stop pumping the handle) slowly and carefully remove load from the workpiece by turning the release valve (#P16) counterclockwise in small increments. (Must turn with small angle, total is 2 full turns)
10. Once the ram has fully retracted, lower the guard and remove the workpiece from the working bed.
11. Disconnect the air inlet fitting from the air source when finished for the day.

MAINTENANCE

1. Maintain the shop press with care. A tool in good condition is easier to control and will have fewer problems.
2. Inspect the shop press periodically. Repair or replace damaged or worn components. Use only identical replacement parts when servicing.
3. Follow instructions for lubricating and changing accessories.
4. Only use the accessories intended for this shop press.
5. Keep the shop press handles clean, dry and free from oil and grease at all times.

WARNING! Only qualified service personnel should repair the shop press. Improperly repaired tools may present a hazard to the user and or others.

BLEEDING THE HYDRAULIC SYSTEM

Bleed excess air from the hydraulic system as follows:

1. Open the release valve (#P16) by turning it counterclockwise.
2. Remove the breather oil screw (#P01) on top of the reservoir (#P02)
3. Fill the pump with hydraulic fluid until it is full.
4. Pump the handle (#64) for several full strokes to eliminate any air in the system.
5. Connect the air supply to fitting on the air foot valve (#61). Turn on the air foot valve (#61) and let the pump work for several times to eliminate any air in the system.
6. Check the oil level at the filler hole and if necessary, top off until the oil level meets the bottom of the filler hole.
7. Restore the breather oil screw. Close the release valve by turning clockwise.
8. Test the ram several times for proper operation before putting it into use. Do not use the ram if it still does not appear to be working properly. Have a qualified service technician service or repair the hydraulic system.

CLEANING

Clean the outside of the press with a dry, clean and soft cloth.

LUBRICATION

Inspect and lubricate the press when required. Only use a light oil.

Periodically lubricate the hoist wheel shaft assembly and the joints on all moving parts. DO NOT allow oil into the heel blocks or frame of the shop press.

AIR TOOL LUBRICATION

Only use air tool oil to lubricate the air system. Other lubricants may not be suitable and could damage the tool or cause a malfunction during use. Add a drop or two of air tool oil into the air valve before each use and after every hour of continuous use. Without lubrication, the press will not work properly and parts will wear prematurely.

Avoid adding too much oil as this can cause premature power loss and eventual tool failure. The press will need to be taken apart by a qualified technician and cleaned of excess oil.

In the event that it becomes necessary to store the press for an extended period of time (overnight, weekend, etc.) it should receive generous amount of lubrication at that time. The press should be run for approximately 30 seconds to ensure that oil has been evenly distributed throughout the system.

STORAGE

The shop press should be stored in a clean and dry environment.

NOTICE - NEVER use a penetrating oil to lubricate the press. Penetrating oil may act as a solvent that will break down the grease and cause the press to seize up.

DISPOSAL

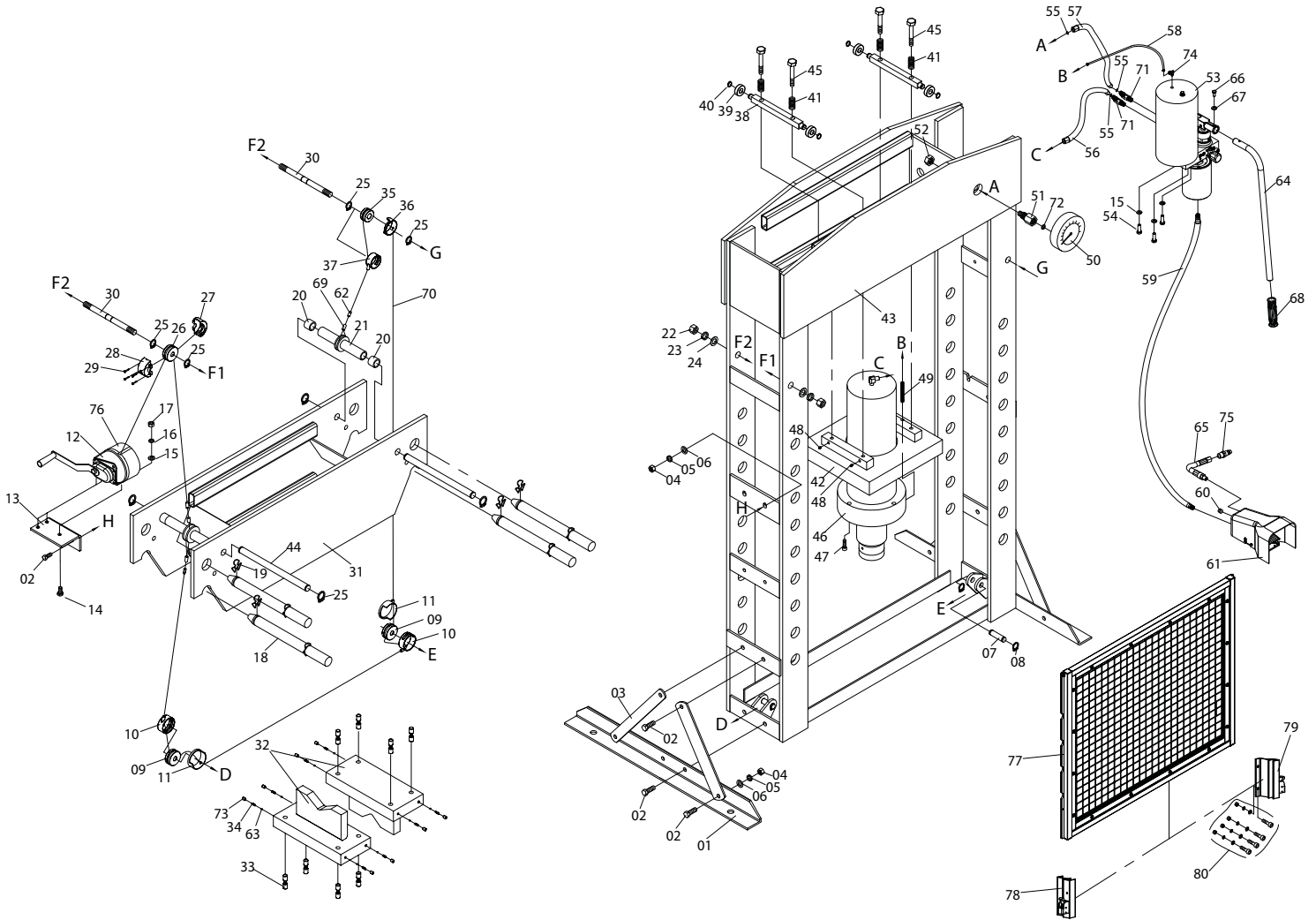
IMPORTANT! DO NOT pollute the environment by allowing uncontrolled discharge of waste oil. DO NOT drain hydraulic oil into the sewer system or dispose in an uncontrolled location. Hydraulic fluid may take more than a year to breakdown in the environment and the ingredients may still be toxic. Contact your local municipality for disposal instructions or locations.

PARTS

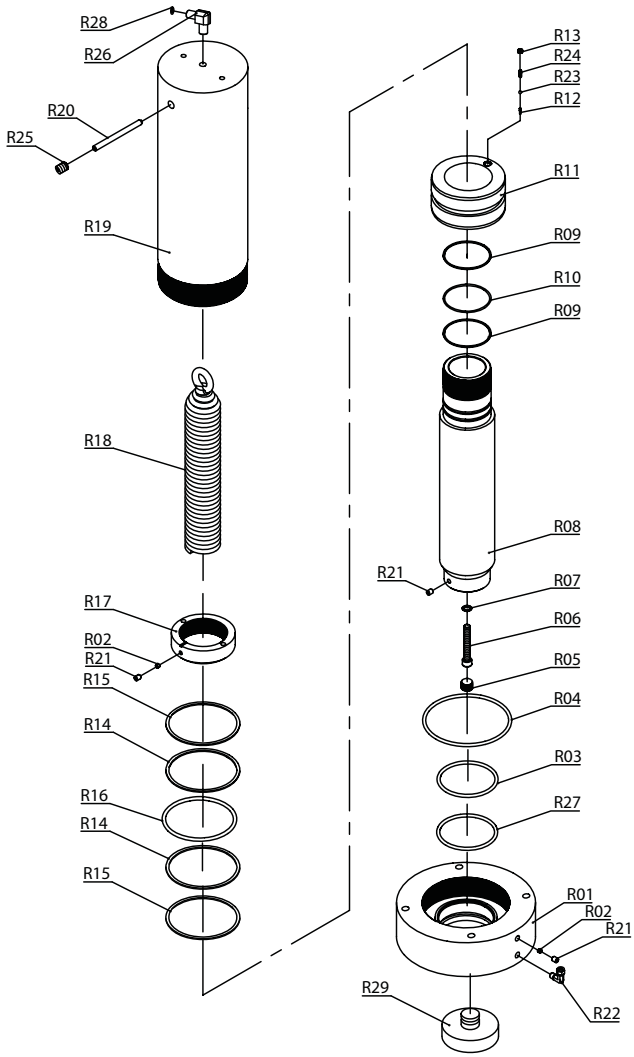
Please refer to the following pages for parts. Please note that all parts are not necessarily replacement items, but are shown for placement.

REPLACEMENT PARTS

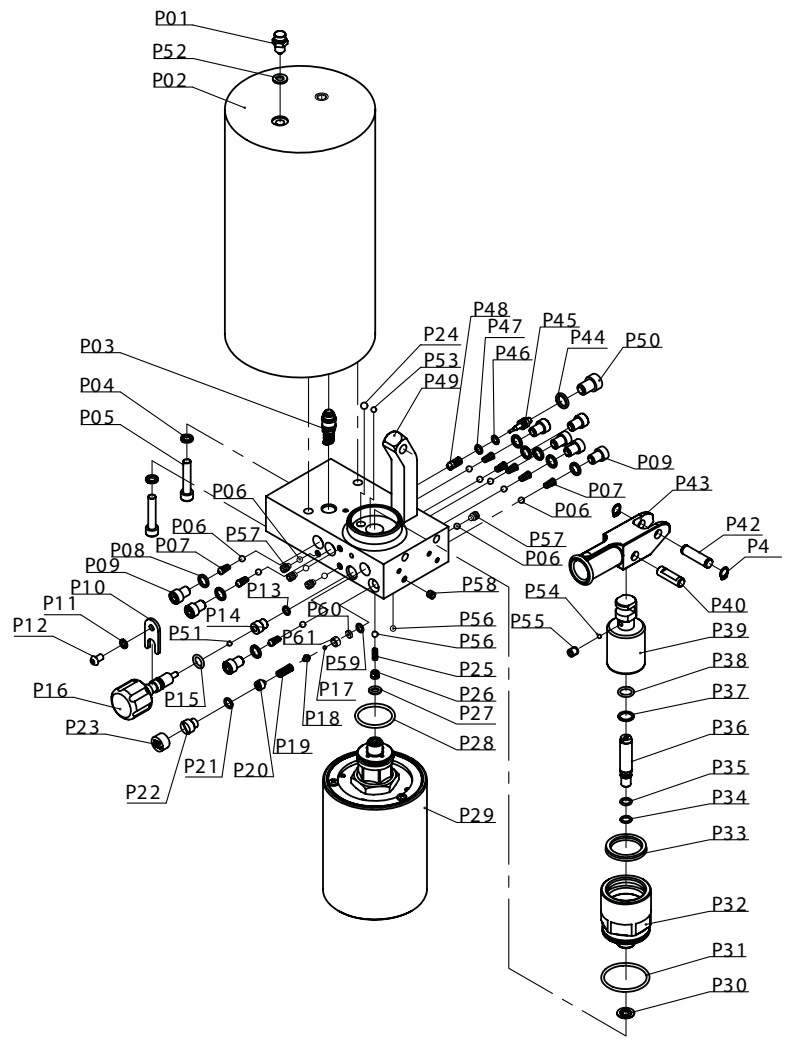
Not all components of this product are replacement items, but are illustrated as a convenient reference for position in the assembly sequence. When ordering parts, give model number, part number and description. Call your distributor for current pricing:



RAM



PUMP



ITEM#	ORDERING PART#	PART DESCRIPTION	QTY
72	PRT7458-SK	SEAL KIT	1
P3			
P15			
P21			
P31			
P33			
P34			
P35			
P37			
P46			
P47			
R3			
R4			
R9			
R10			
R14			
R15			
R16			
R27			
R28			
R29	PRT7458-R29	SERRATED SADDLE	1
P29	PRT7458-P29	AIR MOTOR	1
50	PRT7458-50	PRESSURE GAUGE	1
61	PRT7458-61	AIR VALVE	1
59	PRT7458-59-75	AIR VALVE ASSY	1
60			
61			
65			
75			
46	PRT7458-46	RAM ASSY	1
53	PRT7458-53	PUMP ASSY	1

ITEM#	ORDERING PART#	PART DESCRIPTION	QTY
12	PRT7458-12	HAND WINCH	1
32	PRT7458-32-73	STEEL BLOCK ASSY	1
33			
34			
63			
73			
P16	PRT7458-P16	RELEASE VALVE	1
64	PRT7458-64	HANDLE	1
18	PRT7458-18	BED PIN	1
19	PRT7458-19	RETAINING RING	1
P30	PRT7458-P30-P55	PUMP CORE ASSY	1
P31			
P32			
P33			
P34			
P35			
P36			
P37			
P38			
P39			
P54			
P55			
P40	PRT7458-P40-P43	HANDLE SOCKET ASSY	1
P41			
P42			
P43			
77	PRT7458-77	GUARD	1
78	PRT7458-78	GUARD BRACKET, LEFT	1
79	PRT7458-79	GUARD BRACKET, RIGHT	1
56	PRT7458-56	OIL HOSE 1	1
57	PRT7458-57	OIL HOSE 2	1

TROUBLESHOOTING

Symptom	Possible Causes	Corrective Action
Ram will not press load	<ul style="list-style-type: none"> Release valve not tightly closed Overload condition Faulty / loose couplers Oil lever in pump is low 	<ul style="list-style-type: none"> Ensure release valve tightly closed Remedy overload condition Replace/ tighten couplers Fill and bleed system
Ram bleeds off after press operation	<ul style="list-style-type: none"> Release valve not tightly closed Oil lever in pump is low Ram malfunction 	<ul style="list-style-type: none"> Ensure release valve tightly closed Fill and bleed system Contact your distributor
Ram will not retract after unloading	<ul style="list-style-type: none"> Reservoir overfilled Linkage binding 	<ul style="list-style-type: none"> Drain fluid to proper level Clean and lubricate moving parts
Poor lift performance	<ul style="list-style-type: none"> Fluid level low Air trapped in system 	<ul style="list-style-type: none"> Ensure proper fluid level With ram fully retracted, remove oil filler plug/screw to let pressurized air escape, then reinstall oil filler plug/screw
Ram will not extend to full extension	<ul style="list-style-type: none"> Fluid level low 	<ul style="list-style-type: none"> Ensure proper fluid level



THIS WARRANTY AND CONFIRMED RECEIPT(S) SHOULD BE RETAINED BY THE CUSTOMER AT ALL TIMES

PURCHASED FROM: _____

DATE PURCHASED: _____

INVOICE/RECEIPT NUMBER: _____

Your ATD-7458 is warranted for a period of 12 months from the original purchase date.

For a period of one (1) year from your purchase date, ATD Tools Inc. will repair or replace (at its option) without charge, your ATD product if it was purchased new and the product has failed due to a defect in material or workmanship which you experienced during normal use of the product. This limited warranty is your exclusive remedy.

To access the benefits of this warranty, contact your supplier, or point of sale directly. You may be advised to return the product under warranty, freight prepaid, to your supplier for warranty determination.

If this ATD product is altered, abused, misused, modified, or undergoes service by an unauthorized technician, your warranty will be void. We are not responsible for damage to ornamental designs you place on this ATD product and such ornamentation should not cover any warnings or instructions or they may void the warranty. This warranty does not cover scratches, superficial dents, and other abrasions to the paint finish that occur under normal use. It also does not cover normal wear items such as but not limited to brushes, batteries, drill bits, drill chucks, pads or blades.

Subject to the law in your state:

- (1) Your sole and exclusive remedy is repair or replacement of the defective product as described above.
- (2) ATD is not liable for any incidental damages, including but not limited to, lost profits and unforeseeable consequences.
- (3) The repair and replacement of this product under the express limited warranty described above is your exclusive remedy and is provided in lieu of all other warranties, express or implied. All other warranties, including implied warranties and warranties of merchantability or fitness for a particular purpose are disclaimed and, if disclaimer is prohibited, these warranties are limited to one year from your date of purchase of this product.

Some states' laws do not allow limited durations on certain implied warranties and some states' laws do not allow limitations on incidental or consequential damages. You should consult the law in your state to determine how your rights may vary.

[Affix receipt or invoice here for safe keeping]