



# ATD-7453A 12 Ton Hydraulic Shop Press Owner's Manual



## Features:

- Ideal for the removal or installation of gears, bearings, universal joints, pulleys, wrist pins and other various press jobs
- Multi-position bed for work height adjustment
- Heavy steel, welded construction
- Excellent for bending, bonding or straightening operations

## Specifications:

- Capacity (Ton): 12
- Hydraulic Stroke: 5.1"
- Maximum Working Space: 24.8"
- Column (Bed) Width: 3"
- Bed Positions: 7
- Press Size: 20.47" x 19.69" x 51.8"
- Shipping Weight: 53 lbs.

**NOTE: BEFORE USING THIS SHOP PRESS, PLEASE READ THIS MANUAL, UNDERSTAND THE OPERATING PROCEDURES, SAFETY WARNINGS AND MAINTENANCE OF THIS EQUIPMENT.**

Carefully inspect all components for shipping damage. If shipping damage is found, notify carrier at once. The carrier is responsible for any damage resulting from shipment.

## **IMPORTANT SAFETY INFORMATION**

The use of a hydraulic shop press has inherent dangers. To avoid risk of personal injury or property damage make sure you are fully aware of the operation instructions of the product. Do not exceed the working load limit (WLL) of this shop press. This press is intended for pressing, bending and straightening purposes only. Do not compress springs or other objects that could be ejected from the press. Hydraulic ram is NOT to be used as a vehicle jack. The ATD-7453A is for use as a shop press only.

## **UNPACKING AND ASSEMBLING SHOP PRESS**

### **Unpacking Carton**

Place carton in a clear, open area such as a garage floor. Remove components and lay them out neatly on selected work surface. Make sure all nuts, bolts, washers and pins are properly identified and put in a safe place until needed (refer parts list on Page 6). Do not attempt assembly of this press alone; appropriate assistance is required to assemble this shop press safely.

### **Assembling Shop Press**

- 1: Use M12 x 30 hex bolt (#15), nut (#4), and flat washer (#3) to assemble the main frame (#5), angle steel leg (#17) and spreader (#16). **The bolts should not be tightened at this time.**
- 2: Use M12 x 110 hex bolt (#2), nut (#4) and flat washer (#3) to assemble the main frame (#5) and upper crossbeam (#1). **The bolts should be tightened at this time.**
- 3: Use the M8 nut (#11) and flat washer (#10) to install the hook (#8) and hydraulic ram plate (#9).
- 4: Use spring (#6) to assemble the hydraulic ram plate (#9) to the upper crossbeam (#1) through the hook (#8).  
Adjust M8 nut (#11) to make the hydraulic ram plate and upper crossbeam the same level.
- 5: Insert the rod (#13) to the main frame (#5).
- 6: Place the platform (#14) on the rod (#13).
- 7: Place the pad plate (#12) on the press plate form (#14).
- 8: Place the hydraulic ram (#7) on the hydraulic ram plate (#9).
- 9: Use M8 x 16 hex bolt (#18) to assemble the hydraulic ram (#7) onto the hydraulic ram plate (#9).

### **Test Operation**

***Be sure to test the operation of the press as outlined below before using:***

To raise the hydraulic ram, twist the handle on the release valve clockwise until it stops (do not over-tighten). Take the handle from the valve and insert it into the actuating lever and slowly pump up and down until it reaches about half way. To lower the hydraulic ram, use the handle to rotate the valve very slowly counterclockwise until desired position is reached. A hissing sound may be heard as jack lowers and pressure from hydraulic cylinder is released.

# OPERATING SHOP PRESS

## Preparing Work Area

Before using the shop press, it is important to prepare your work area properly. Follow this procedure each time the press is used to help prevent property damage and or serious injury.


1. Thoroughly inspect your shop press for damage or wear before each use. Briefly test the operation of unloaded press and inspect nuts and bolts to be sure they are still tight before using the press.
2. The working load limit (WLL) of this shop press is 12 tons.

 **WARNING** NEVER EXCEED THE WORKING LOAD LIMIT OF PRESS.

3. Clear children and others from work area before using shop press. Another adult should be nearby for extra safety and assistance but must be clear of work area.
4. Clear obstructions from the work area. Working in a tight or cluttered work area is dangerous.
5. Be sure press is on solid, level ground such as paved or concrete driveway or garage floor.
6. Uneven, cracked or sloped surfaces create hazardous working conditions and dangerously impede the function of the shop press.

## Using your ATD-7453A Shop Press

1. Prepare the work area and inspect the shop press to ensure it is in workable condition as outlined above.
2. Adjust the press plate by moving the pins up and down.
3. Twist the handle on the release valve clockwise until it stops (do not over tighten) Take the handle from the valve and insert it into the actuating lever and slowly pump up and down until the press plate just begins to contact the work piece.
4. Inspect position of the press plate and the arbor plates, ensuring they are centered and will engage the work piece correctly.
5. Continue to pump handle until the press has completed the required operation. Pay attention to the position of the work piece, as the press is applying pressure. Be sure there is no danger of it slipping off.
6. Slowly twist the handle on the release valve counterclockwise to release pressure. Be careful as work piece may move.

 **WARNING** A shop press **SHOULD NEVER** be used as a vise. Under **NO CIRCUMSTANCES** should work be undertaken on a work piece while being held in a press. This has the potential to create a potentially hazardous working environment.

## MAINTENANCE AND STORAGE

### ***Important Note:***

When adding or replacing oil, always use a good quality hydraulic ram oil. Avoid mixing types of oil. **DO NOT** use brake fluid, alcohol, glycerin, detergent, motor oil or dirty oil. Using the wrong fluid can cause irreversible damage to the internal workings of the hydraulic ram.

### **Adding Oil**

With the hydraulic ram fully lowered and on level surface remove the rubber plug to expose the fill hole. Oil level should be approximately 7/16" below the fill hole. If low, add oil as needed, and then close the fill hole. We recommend Mobil DTE 13M or equivalent.

### **Replacing Oil**

For best performance and longer life, the oil in the hydraulic ram should be replaced once a year.

**To drain-** With jack fully lowered and on a level surface, remove the rubber plug to expose the fill hole (located on the back of the hydraulic ram) and loosen the release valve by turning counterclockwise. Lay the hydraulic ram on its side and drain fluid into a suitable container. Be careful not to let dirt or foreign matter get into the fill hole. Close the release valve by turning clockwise. Fill with a good grade hydraulic ram oil approximately 7/16" below the valve hole and close. **IMPORTANT: Always test the shop press before using it.**

### **Cleaning**

The shop press should be wiped clean with soft cloth only. Do not use gasoline, kerosene, or other solvents or abrasive cleaners as cleaning agents as they will cause deterioration of the painted finish exposing the shop press to rust. It could also cause deterioration of the hydraulic seals.

### **Storage**

Before storing, twist handle 1.5 turns counterclockwise to release pressure from the hydraulic cylinder. Leave the handle in this position. Store your shop press level, in a clean and dry environment preferably indoors to protect press from moisture.

### **Repairing Shop Press**

Only trained, licensed and certified repair personnel should attempt any repairs. Any modifications to this press except those performed by the manufacturer or a qualified repair facility, will void all warranties both written and implied.

## TROUBLESHOOTING

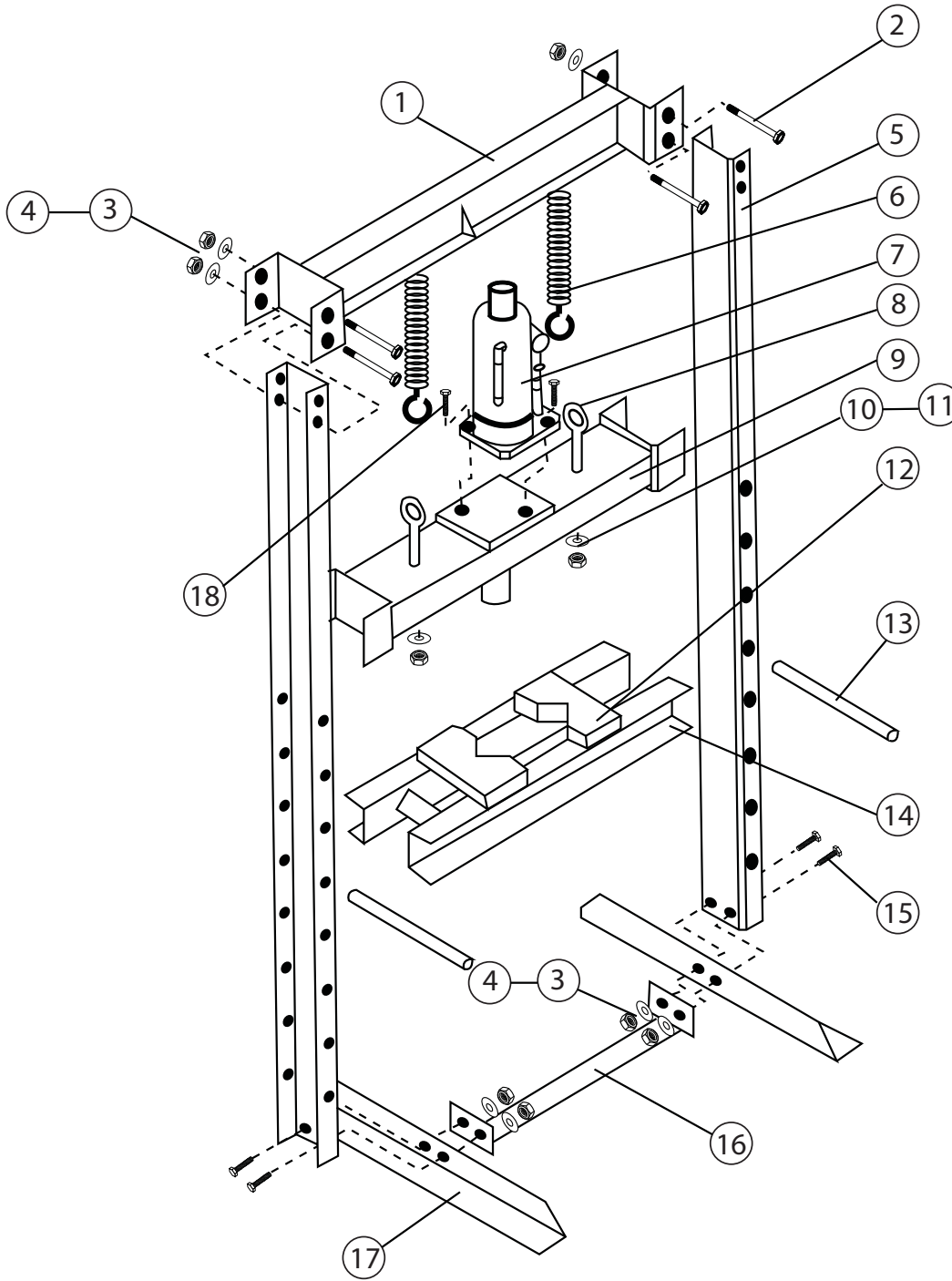
### **Purging**

Occasionally during shipment and/or handling, air can become trapped in the hydraulic system this can interfere with the hydraulic ram lifting performance. To alleviate this problem you will need to purge the hydraulic ram:

1. Ensure the hydraulic ram is in the lowered position and open the release valve.
2. Remove the rubber plug to expose the fill hole.
3. Rapidly pump the hydraulic ram several times.
4. Replace the rubber fill plug and the hydraulic ram should now be ready for use.

## REPLACEMENT PARTS

Not all components of the jack are replacement items, but are illustrated as a convenient reference for position in the assembly sequence. When ordering parts, give model number, part number and description. Call your distributor for current pricing.



ITEM#	ORDERING PART#	PART DESCRIPTION	QTY
1	PRT7453A-01	UPPER CROSSBEAM	1
2	PRT7453A-HK	HEX BOLT M12X10	4
3	PRT7453A-HK	FLAT WASHER	8
4	PRT7453A-HK	NUT M12	8
5	PRT7453A-05	MAIN FRAME	2
6	PRT7453A-06	SPRING	2
7	PRT7453A-07	BOTTLE JACK	1
8	PRT7453A-08	HOOK	2
9	PRT7453A-09	JACK PLATE	1

ITEM#	ORDERING PART#	PART DESCRIPTION	QTY
10	PRT7453A-HK	FLAT WASHER	2
11	PRT7453A-HK	NUT M8	2
12	PRT7453A-12	PAD PLATE	2
13	PRT7453A-13	ROD	2
14	PRT7453A-14	PRESS PLATFORM	1
15	PRT7453A-HK	HEX BOLT M12X30	4
16	PRT7453A-16	SPREADER	1
17	PRT7453A-17	ANGLE STEEL LEG	2
18	PRT7453A-HK	INNER HEX BOLT M8X16	2



# Notes

---

---

---

---

---

---

---

---

---

---

---

---

---

---

---

---

---

---

---

---

---

---

---

---



**PREVENTATIVE MAINTENANCE RECORD LOG**

<b>DATE</b>	<b>MAINTENANCE PERFORMED</b>



# ATD<sup>®</sup>

## WARRANTY

### 1 YEAR LIMITED WARRANTY

**THIS WARRANTY AND CONFIRMED RECEIPT(S) SHOULD BE RETAINED BY THE CUSTOMER AT ALL TIMES**

PURCHASED FROM: \_\_\_\_\_

DATE PURCHASED: \_\_\_\_\_

INVOICE/RECEIPT NUMBER: \_\_\_\_\_

Your ATD-7453A is warranted for a period of 12 months from the original purchase date.

For a period of one (1) year from your purchase date, ATD Tools, Inc. will repair or replace (at its option) without charge, your ATD product if it was purchased new and the product has failed due to a defect in material or workmanship which you experienced during normal use of the product. This limited warranty is your exclusive remedy.

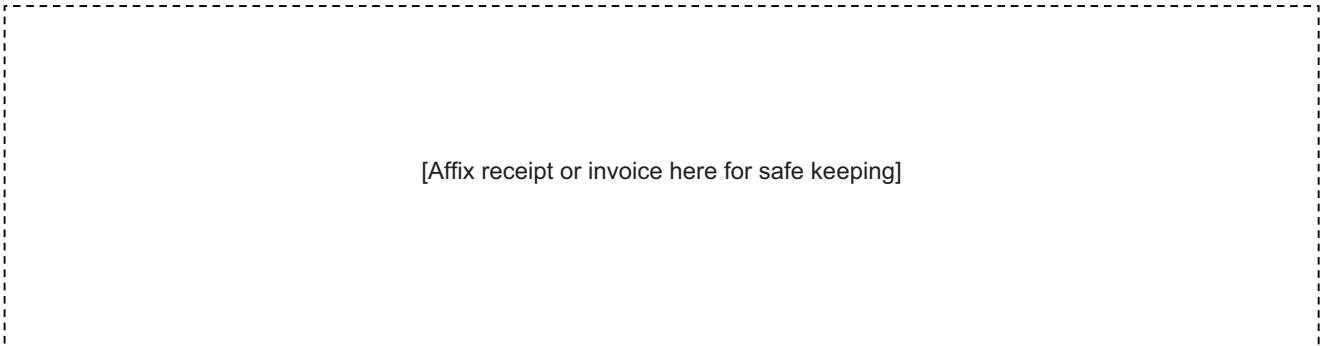
To access the benefits of this warranty, contact your supplier, or point of sale directly. You may be advised to return the product under warranty, freight prepaid, to your supplier for warranty determination.

If this ATD product is altered, abused, misused, modified, or undergoes service by an unauthorized technician, your warranty will be void. We are not responsible for damage to ornamental designs you place on this ATD product and such ornamentation should not cover any warnings or instructions or they may void the warranty. This warranty does not cover scratches, superficial dents, and other abrasions to the paint finish that occur under normal use. It also does not cover normal wear items such as but not limited to brushes, batteries, drill bits, drill chucks, pads or blades.

Subject to the law in your state:

- (1) Your sole and exclusive remedy is repair or replacement of the defective product as described above.
- (2) ATD is not liable for any incidental damages, including but not limited to, lost profits and unforeseeable consequences.
- (3) The repair and replacement of this product under the express limited warranty described above is your exclusive remedy and is provided in lieu of all other warranties, express or implied. All other warranties, including implied warranties and warranties of merchantability or fitness for a particular purpose are disclaimed and, if disclaimer is prohibited, these warranties are limited to one year from your date of purchase of this product.

Some states' laws do not allow limited durations on certain implied warranties and some states' laws do not allow limitations on incidental or consequential damages. You should consult the law in your state to determine how your rights may vary.



[Affix receipt or invoice here for safe keeping]