



ATD-7434B

1-Ton Air Actuated Telescopic Transmission Jack Owner's Manual



Features:

- Extra-wide base lowers center of gravity and promotes stability
- Rugged 4" polyurethane wheels for smooth and easy movement, 2 with brakes
- Foot release pedal provides controlled lowering of load
- Saddle adjusts to fit most pan configurations
- Chrome-plated rams for maximum durability
- A compact, yet powerful air motor is equipped to raise the load to the desired height efficiently, effortlessly and safely
- Load control chains secure transmission in place
- Meets or exceeds ASME/PASE 2019 standards

Specifications:

- Capacity: 1-Ton
- Minimum Height: 36"
- Maximum Height: 76.56"
- Saddle Base: 9.5" x 13.4"
- Minimum Saddle Area: 9.6" x 16.5"
- Expanded Saddle Area Max.: 13.4" x 16.5"
- Saddle Range of Motion:
Front: 27° Rear: 10° Left: 27.6° Right: 37°
- Air Pressure: 110-120 psi
- Shipping Weight: 189.15 lbs.

SAVE THESE INSTRUCTIONS

For your safety, read, understand, and follow the information provided with and on this jack. The owner and operator of this equipment should have an understanding of this jack and safe operating procedures before attempting to use. The owner and operator should be aware of this jacks safe operating procedures before attempting to use. Instructions and safety information shall be conveyed in the operator's native language before use of this jack is authorized. If any doubt exists as to the safe and proper use of this jack, remove from service immediately. Inspect before each use. Do not use if broken, bent, cracked or damaged parts are noted. Any jack that appears damaged in any way, or operates abnormally shall be removed from service immediately. If the jack has been or is suspected to have been subjected to a shock load (a load dropped suddenly, unexpectedly upon it), immediately discontinue use until jack has been checked by a factory authorized service center. It is recommended that an annual inspection be done by qualified personnel. Labels and owner's manuals are available from manufacturer.

PRODUCT DESCRIPTION:

ATD Tools Hydraulic Transmission Jacks are designed to be used as an aid in the removal and installation of automotive and light truck transmissions, transfer cases and transaxles. They are intended for use under an overhead lift or in a garage pit. These jacks comply with applicable ASME/PASE 2019 Standards. Ensure the air source can dedicate 110-120 psi.

SPECIFICATIONS:

Model	Capacity	Min. Height	Max. Height	Min. Saddle Area	Max. Saddle Area	Saddle Range of Motion	Shipping Weight
ATD-7434B	1 Ton	36"	76.56"	9.6" x 16.5"	13.4" x 16.5"	Front: 27° Rear: 10° Left: 27.6° Right: 37°	189.15 lbs.

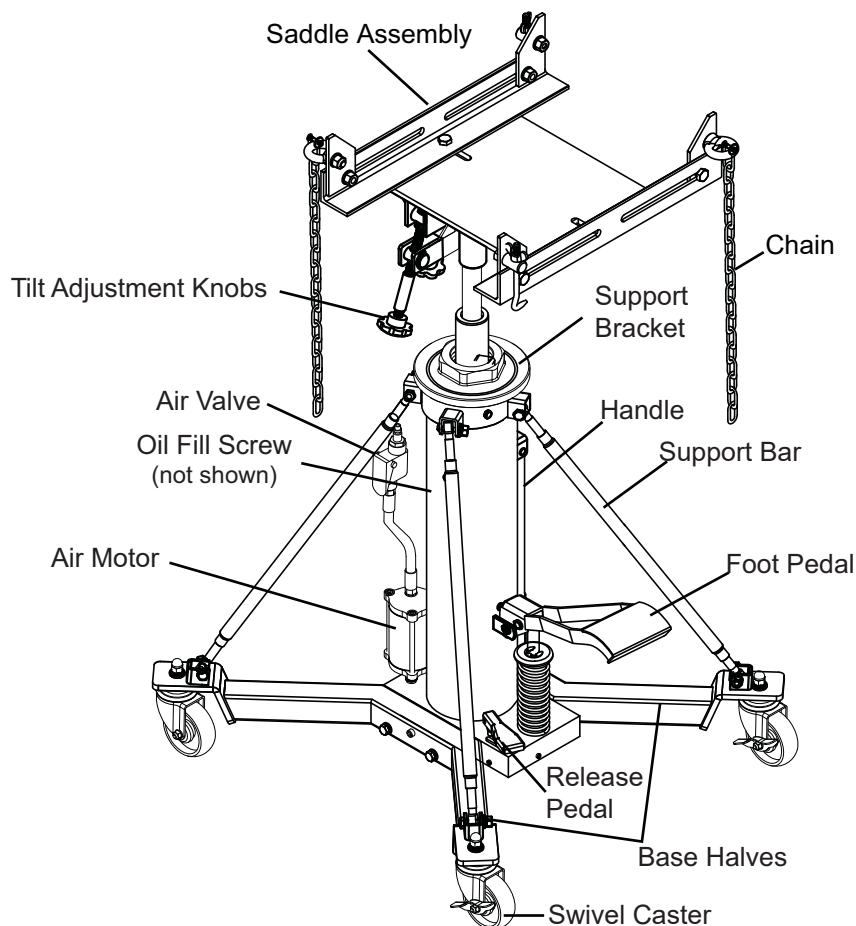


Figure 1 - Model ATD-7434B nomenclature

Note: Vent Screw and Oil Filler Screw are located on the upper portion of the reservoir.

CAUTION: READ CAREFULLY BEFORE UNPACKING PRODUCT.

ASSEMBLY:

Refer to Figure 2 on page 5:

1. Three major parts should be included in package:
 - (a) Hydraulic unit with pumping mechanism (with air motor equipped)
 - (b) Saddle assembly
 - (c) 2 pieces of base half with bolts and washers
2. Connect Leg (#34) using Bolt (#39), Lock washer (#40) and Flat washer (#41).
3. Attach 2 pieces of Locking Casters (#42) and 2 pieces of Caster (#38) to the legs using Nut (#35), Lock Washer (#36) and Flat Washer (#37).
4. Attach support bars (#80) to the Transmission Jack using adjusting Bolt (#82), Nut (#84), Lock Washer (#83) and Flat Washer (#86).
5. Position and install the Saddle Assembly (#87) onto the ram piston and tighten the bolt on the saddle to secure the saddle.

BEFORE USE

1. Inspect jack before each use. Do not use if bent, broken or cracked components are noted. Ensure that casters move freely. Check for and tighten any loose assemblies.
2. Verify that the product and the application are compatible.
3. With ram fully lowered, remove oil filler screw to bleed air in the reservoir.
4. Ensure oil level is just below the rim of the oil filler screw hole. Reinstall oil filler screw.
5. Pour a teaspoon of good quality air tool lubricant into the air valve (See Figure 2). Connect to air supply and operate for 3 seconds to evenly distribute lubricate

WARNING

- Study, understand, and follow all printed material provided with/on this product before use.
- Do not exceed rated capacity.
- Use only on hard, level surfaces capable of supporting rated capacity loads.
- Use of this jack is limited to the removal, installation and transportation of transmissions, transfer cases and transaxles. Do not use a transmission jack to tilt or support a vehicle.
- Ensure the center gravity of load is centered on the saddle.
- Do not exceed 10° tilt angle of the saddle assembly in all directions.
- Adequately support the vehicle before starting repairs.
- Use only chains and slings provided.
- If loaded jack must be moved, make sure that the load is secured, stable and in lowest position.
- This is a lifting and lowering device only.
- Transfer load immediately to appropriate support device for service or repair.
- No alterations shall be made to this product
- Failure to heed these markings may result in personal injury and/or property damage.

OPERATION

When disassembling the transmission, position the transmission jack under the transmission. Depress the foot pedal to raise the saddle to a height close to the center of the balance point of the transmission oil pan but do not touch the transmission.

Adjust the ratchet arms on the saddle so that the angled section of the arms will fit in the mounting flange around the perimeter of the transmission oil pan. Slowly pump the jack to raise the saddle to fully connect the transmission. Secure the transmission to the jack's saddle with the safety chains provided. If necessary, turn the fore and aft and side to side Tilt knobs so the saddle is in the proper alignment with the transmission pan before securing the load to the saddle.

Raise Saddle:

CAUTION! Do not operate your ATD-7434B jack by pumping the lift pedal and pressing the air valve at the same time.

1. Pump foot pedal or press air valve until saddle reaches desired position.
2. Follow vehicle manufacturer's recommended procedures for removing the load as outlined in vehicle service manual or repair guide.
3. Secure load with provided chains.
4. Ensure load's center of gravity is centered on the saddle and load is stable before moving jack.

Lower Saddle:

CAUTION! Be sure all tools and personnel are clear before lowering load.

Slowly, gently apply downward pressure to the release valve pedal.

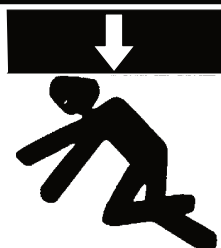
IMPORTANT:

Make sure the tie down strap is very tight when securing the transmission to the saddle and before raising or lowering the transmission. Remove the transmission from the engine according to the instructions in the vehicle service manual. Once the transmission has been disassembled from the engine, very slowly depress the release pedal to lower the transmission all the way down.

IMPORTANT:

Be sure all tools and personnel are clear before lowering load. Slowly depress release valve pedal. When installing a transmission, refer to the above instructions and the vehicle manufacturer's installation manual.

WARNING



To avoid crushing and related injuries:
NEVER work on, under or around a load supported only by a jack. Immediately transfer the load to an appropriate work station.

MAINTENANCE

Important: Use only good grade hydraulic jack oil. Avoid mixing different types of fluid and NEVER use brake fluid, turbine oil, transmission fluid, motor oil or glycerin. Improper fluid can cause premature failure of the jack and the potential for sudden and immediate loss of load. We recommend Mobil DTE 13M or equivalent.

Periodically check for leaks at air connections. Replace connections as needed.

Adding oil:

1. With saddle fully lowered, set jack in its upright, level position. Remove oil filler screw.
2. Fill until oil is level with filler screw hole, reinstall oil filler screw.

Changing oil:

For best performance and longest life, replace the complete fluid supply at least once a year.

1. With the saddle fully lowered, set jack in its upright, level position. Remove the oil filler screw.
2. Lay the jack on its side and drain the fluid into a suitable container.

NOTE: Dispose of hydraulic fluid in accordance with local regulations.

3. Set jack in its level, upright position and fill with oil until just below the rim of the oil filler hole.
4. Reinstall the oil filler screw.

Lubrication:

1. A periodic coating of light lubricating oil to pivot points, axles and hinges will help to prevent rust and assure that wheels, casters and pump assemblies move freely.

2. When used on a daily basis, air pump model should be internally lubricated before each use. Use only good quality air tool lubricant. If no inline oiler is used, pour a teaspoon of air tool oil into the inlet of the air supply. Simply operate the jack using the air feature in order to fully distribute the oil.

Cleaning:

Periodically check the ram for signs of rust or corrosion. Clean as needed and wipe with an oily cloth.

Note: Never use sandpaper or abrasive material on these surfaces!

Purging air from the hydraulic system:

Air can accumulate within a hydraulic system during shipment or after prolonged use. This entrapped air causes the jack to respond slowly or feel "spongy." Use the steps below to bleed the system.

1. Pump the jack to the highest point where the first and the second piston rams are both at maximum height.
2. Get the help of another person to keep the release pedal depressed, and activate the foot pedal about 20 times.
3. Let go of the release pedal; the air in the oil system should be bled successfully.

To bleed the air in the second cylinder:

1. Locate the air bleeder screw at the top nut, which is on the top of the first piston rod.
2. Pump the jack to its maximum height. Use an allen socket wrench to loosen the air bleeder screw for no more than two 360° turns. Push the saddle assembly downward to force the air in the cylinder out until nothing but oil drains out of the bleeder hole.
3. Tighten the bleeder screw and double check. It may be necessary to repeat the above steps several times.

Storage:

When not in use, store the jack with saddle in lowest position and air supply disconnected.

TROUBLESHOOTING

Symptom	Possible Causes	Corrective Action
Jack will not lift load	<ul style="list-style-type: none">• Air supply inadequate• Hydraulic unit malfunction	<ul style="list-style-type: none">• Ensure adequate air supply• Discontinue use and contact your distributor
Jack bleeds off after lift	<ul style="list-style-type: none">• Overload condition• Hydraulic unit malfunction	<ul style="list-style-type: none">• Remedy overload condition• Discontinue use and contact your distributor
Jack will not lower after unloading	<ul style="list-style-type: none">• Reservoir overfilled• Linkage binding	<ul style="list-style-type: none">• Drain fluid to proper level• Clean and lubricate moving parts
Poor lift performance	<ul style="list-style-type: none">• Fluid level low	<ul style="list-style-type: none">• Ensure proper fluid level
Will not lift to full extension	<ul style="list-style-type: none">• Fluid level low	<ul style="list-style-type: none">• Ensure proper fluid level

REPLACEMENT PARTS

Not all components of the jack are replacement items, but are illustrated as a convenient reference for position in the assembly sequence. When ordering parts, give model number, part number and description. Call your distributor for current pricing:

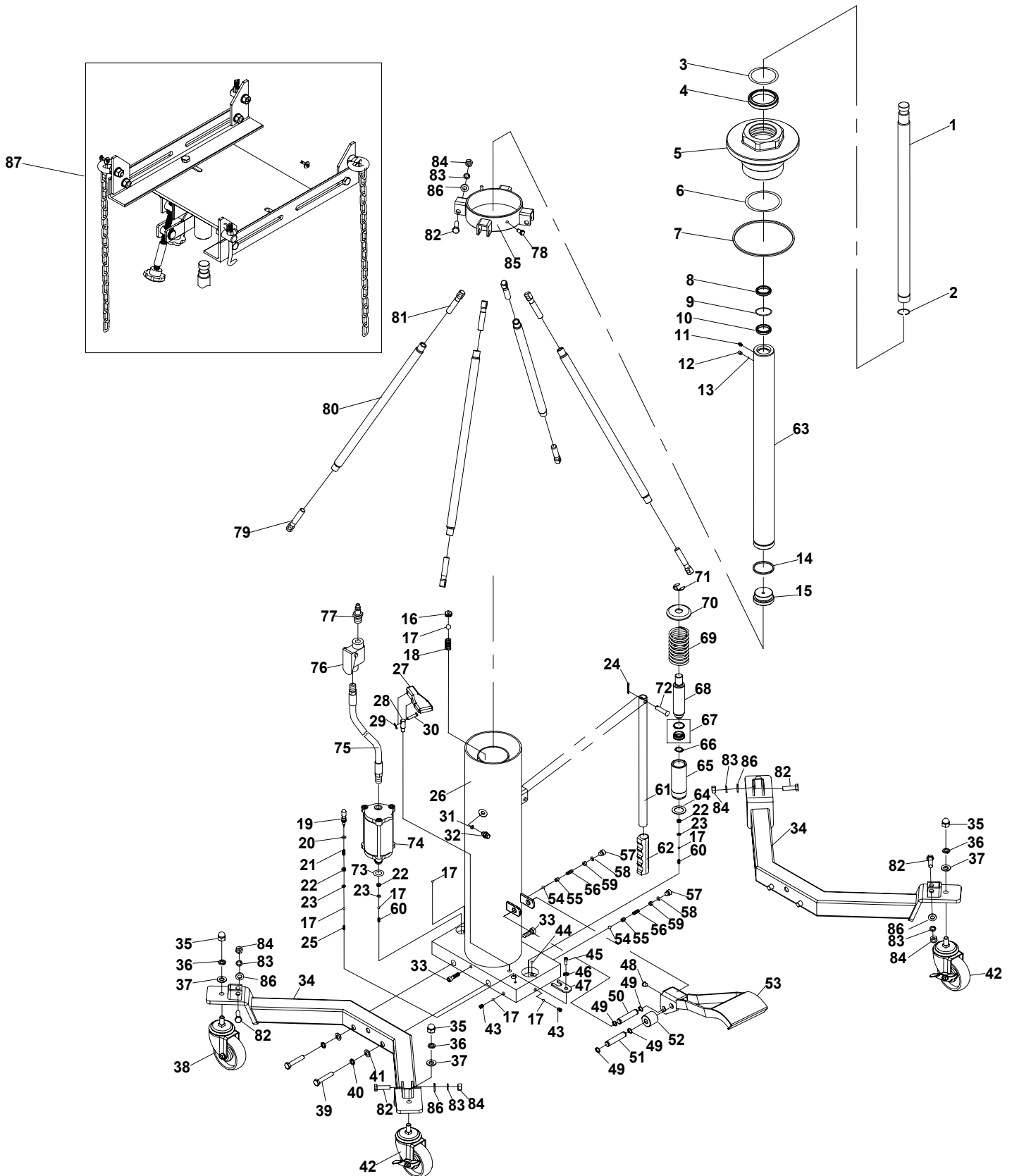


Figure 2 - Replacement Parts Illustration for model ATD-7434B

ITEM#	ORDERING PART#	PART DESCRIPTION	QTY
1	PRT7434B-01-77 HYDRAULIC CYLINDER W/AIR MOTOR	2ND STAGE PISTON	1
2		RETAINER RING	1
3		O-RING	1
4		OIL SEAL	1
5		TOP NUT	1
6		O-RING	1
7		SEAL RING	1
8		DUST RING	1
9		O-RING	1
10		OIL SEAL	1
11		OIL CAP	1
12		SCREW	1
13		STEEL BALL	1
14		RETAINER RING	1
15		COVER	1
16		SCREW	1
17		STEEL BALL	7
18		SPRING	1
19		RELEASE VALVE CORE	1
20		O-RING	1
21		SPRING	1
22		VALVE SEAT	3
23		NYLON WASHER	3
24		R PIN	1
25		SPRING	1
26		PUMP	1
27		RELEASE PEDAL	1
28		RELEASE PEDAL SEAT	1
29		R-PIN	1
30		PIN	1
31		SEAL RING	1
32		SCREW	1
33		SCREW	2
34		LEG	2
35		NUT	4
36		LOCK WASHER	4
37		FLAT WASHER	4
38	PRT7434B-35-38	CASTER W/BOLT AND WASHER	2
39		BOLT	4
40		LOCK WASHER	4
41		FLAT WASHER	4
42	PRT7434B-35-42	LOCKING CASTER W/BOLT AND WASHER	2
43	PRT7434B-1-77 HYDRAULIC CYLINDER W/AIR MOTOR	SCREW	2
44		STEEL BALL	1

ITEM#	ORDERING PART#	PART DESCRIPTION	QTY
45	PRT7434B-01-77 HYDRAULIC CYLINDER W/AIR MOTOR	SCREW	1
46		LOCK WASHER	1
47		LIMIT PLATE	1
48		RUBBER PLATE	1
49		SHAFT CLAMP	4
50		PIN	1
51		PIN	1
52		ROLLER	1
53		PEDAL	1
54		STEEL BALL	2
55		STEEL BALL SEAT	2
56		SPRING	2
57		SCREW	2
58		O-RING	2
59		SCREW	2
60		SPRING	2
61		HANDLE	1
62		HANDLE SLEEVE	1
63		1ST STAGE PISTON	1
64		WASHER	1
65		PUMP CORE SEAT	1
66		SHAFT CLAMP	1
67		OIL SEAL	1
68		PUMP CORE	1
69		SPRING	1
70		SPRING COVER	1
71		RETAINER RING	1
72		PIN	1
73	PRT7434B-73-74 AIR MOTOR	COPPER WASHER	1
74		AIR MOTOR	1
75	PRT7434B-75-77 AIR HOSE ASSEMBLY	AIR HOSE	1
76		AIR VALVE	1
77		AIR HOSE CONNECTOR	1
78		BOLT	1
79	PRT7434B-79-81 SUPPORT BAR ASSEMBLY	BOLT	4
80		SUPPORT BAR	4
81		BOLT	4
82		BOLT	8
83		LOCK WASHER	8
84		NUT	8
85		SUPPORT BRACKET ASSEMBLY	1
86		FLAT WASHER	8
87	PRT7434B-87	SADDLE ASSEMBLY	1

* - PRT7434B-SK - SEAL KIT CONTAINS 3, 4, 6, 8, 9, 10, 20, 23, 31, 58, 64, 67, 73

7



WARRANTY

1 YEAR LIMITED WARRANTY

THIS WARRANTY AND CONFIRMED RECEIPT(S) SHOULD BE RETAINED BY THE CUSTOMER AT ALL TIMES

PURCHASED FROM: _____

DATE PURCHASED: _____

INVOICE/RECEIPT NUMBER: _____

Your ATD-7434B is warranted for a period of 12 months from the original purchase date.

For a period of one (1) year from your purchase date, ATD Tools, Inc. will repair or replace (at its option) without charge, your ATD product if it was purchased new and the product has failed due to a defect in material or workmanship which you experienced during normal use of the product. This limited warranty is your exclusive remedy.

To access the benefits of this warranty, contact your supplier, or point of sale directly. You may be advised to return the product under warranty, freight prepaid, to your supplier for warranty determination.

If this ATD product is altered, abused, misused, modified, or undergoes service by an unauthorized technician, your warranty will be void. We are not responsible for damage to ornamental designs you place on this ATD product and such ornamentation should not cover any warnings or instructions or they may void the warranty. This warranty does not cover scratches, superficial dents, and other abrasions to the paint finish that occur under normal use. It also does not cover normal wear items such as but not limited to brushes, batteries, drill bits, drill chucks, pads or blades.

Subject to the law in your state:

- (1) Your sole and exclusive remedy is repair or replacement of the defective product as described above.
- (2) ATD is not liable for any incidental damages, including but not limited to, lost profits and unforeseeable consequences.
- (3) The repair and replacement of this product under the express limited warranty described above is your exclusive remedy and is provided in lieu of all other warranties, express or implied. All other warranties, including implied warranties and warranties of merchantability or fitness for a particular purpose are disclaimed and, if disclaimer is prohibited, these warranties are limited to one year from your date of purchase of this product.

Some states' laws do not allow limited durations on certain implied warranties and some states' laws do not allow limitations on incidental or consequential damages. You should consult the law in your state to determine how your rights may vary.

[Affix receipt or invoice here for safe keeping]