



# Hydraulic Transmission Jacks

## Operating Instructions & Parts Manual

Model Number

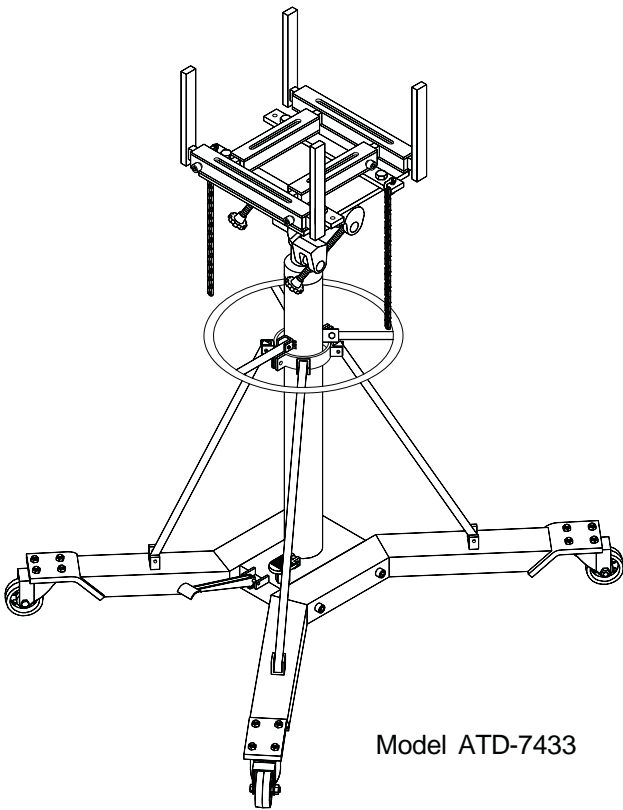
ATD-7433

ATD-7434 (Air Actuated Model)

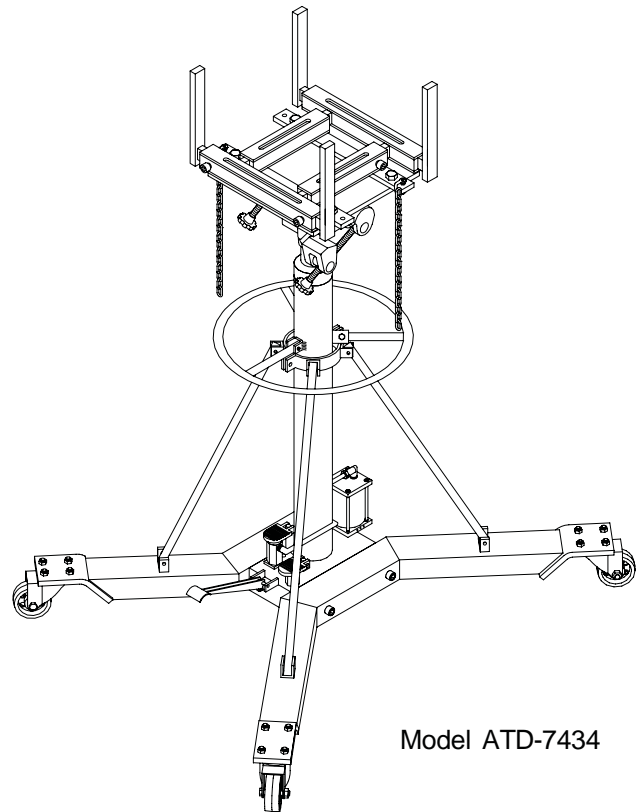
Capacity

1 Ton

1 Ton



Model ATD-7433



Model ATD-7434

### **WARNING**

**WARNING:** This product may contain chemicals, including lead, known to the State of California to cause cancer, birth defects or other reproductive harm. *Wash hands after handling.*

**Save these instructions:**

For your safety, read, understand, and follow the information provided with and on this jack. The owner and operator of this equipment shall have an understanding of this jack and safe operating procedures before attempting to use. The owner and operator shall be aware that use and repair of this product may require special skills and knowledge. Instructions and safety information shall be conveyed in the operator's native language before use of this jack is authorized. If any doubt exists as to the safe and proper use of this jack, remove from service immediately. Inspect before each use. Do not use if broken, bent, cracked or damaged parts are noted. Any jack that appears damaged in any way, or operates abnormally shall be removed from service immediately. If the jack has been or suspected to have been subjected to a shock load (a load dropped suddenly, unexpectedly upon it), immediately discontinue use until jack has been checked by a Factory Authorized Service Center. It is recommended that an annual inspection be done by qualified personnel. Labels and Owner's Manuals are available from manufacturer.

**PRODUCT DESCRIPTION:**

ATDTools Hydraulic Transmission Jacks are designed to be used as an aid in the removal and installation of automotive and light truck transmissions, transfer cases and transaxles. They are intended for use under an overhead lift or in a garage pit. These jacks comply with applicable ASME-PALD Standards. The air actuated function is an added feature of model ATD-7434. For ATD-7434, ensure the air source can dedicate 7.8 CFM @ 90-175 psi. To ensure dependable, trouble free operation an inline air dryer and oiler is recommended.

**SPECIFICATIONS:**

Model	Capacity	Min. Height	Max. Height	Min. Saddle Area	Max. Saddle Area	Base Size	Weight
ATD-7433	2000 lbs.	48-5/8"	77-3/8"	15-1/2" x 12-5/8"	24-1/2" x 18-7/8"	42-1/8" x 39-1/2"	316.4 lbs.
ATD-7434	2000 lbs.	48-5/8"	77-3/8"	15-1/2" x 12-5/8"	24-1/2" x 18-7/8"	42-1/8" x 39-1/2"	348 lbs.

**CAUTION: READ CAREFULLY BEFORE UNPACKING PRODUCT.**

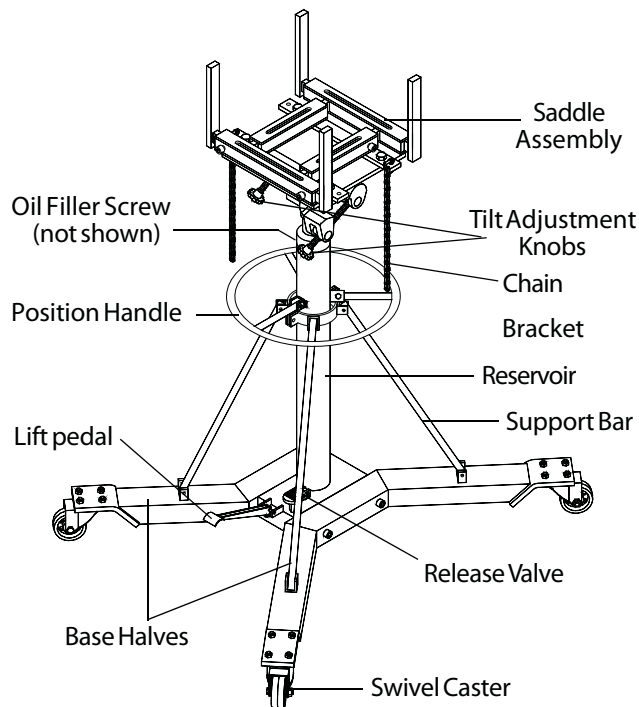


Figure 1 - Model ATD-7433 nomenclature

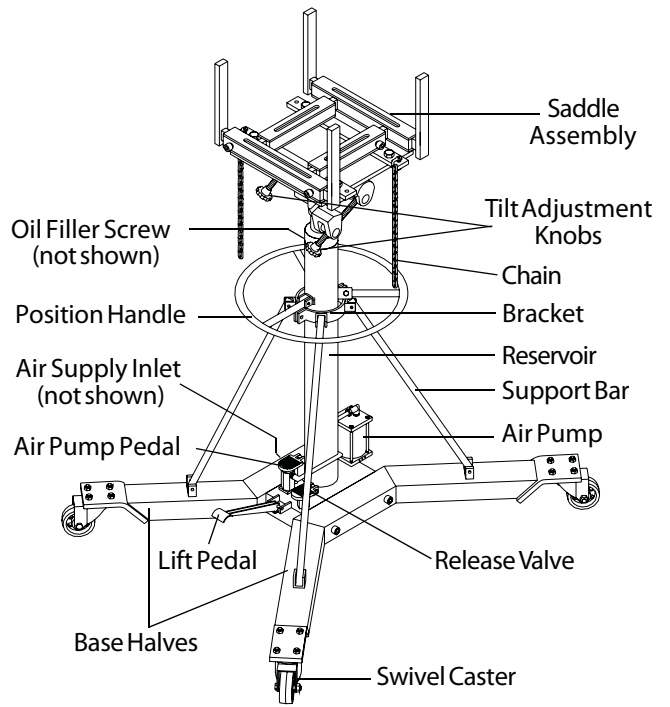


Figure 2 - Model ATD-7434 nomenclature

*Note: Vent Screw and Oil Filler Screw are located on the upper portion of the reservoir.*

## ASSEMBLY

Refer to Figure 1 & 2:

1. Three major parts should be included in package:
  - (a) Hydraulic unit with pumping mechanism ( with air motor equipped for model ATD-7434)
  - (b) saddle unit
  - (c) 2 pieces of base half with bolts and washers
2. Attach one of the base halves to the base of the hydraulic unit, then secure using allen head bolts and washers provided. Then apply the same procedure to the other base half. Use torque wrench to tighten to 30 ft.-lbs. torque. Do not overtighten.
3. Attach the brackets to the reservoir, then attach one end of the support bars to base half and the other end to the bracket. Secure with bolts and nuts provided. Repeat for all other three support bars.
4. Slide the position handle to the reservoir from top, then secure with bolts and nuts provided.
5. Position the saddle unit above the ram piston, place the saddle socket onto the ram piston. Secure using the set screw.

## ! WARNING

- Study, understand, and follow all printed materials provided with/on this product before use.
- Do not exceed rated capacity.
- Use only on hard, level surfaces capable of supporting rated capacity loads.
- Use of this jack is limited to the removal, installation and transportation of trans missions, transfer cases and transaxles. Do not use a transmission jack to tilt or support a vehicle.
- Ensure the center gravity of load is centered on the saddle.
- Do not exceed 10° tilt angle of the saddle assembly in all directions.
- Adequately support the vehicle before starting repairs.
- Use only chains and slings provided.
- If loaded jack must be moved, make sure that the load is secured, stable and in lowest position.
- This is a lifting and lowering device only.
- Transfer load immediately to appropriate support device for service or repair.
- No alterations shall be made to this product
- Failure to heed these markings may result in personal injury and/or property damage.

## BEFORE USE

1. Inspect jack before each use. Do not use if bent, broken or cracked components are noted. Ensure that casters move freely. Check for and tighten any loose assemblies.
2. Verify that the product and the application are compatible.
3. With ram fully lowered, remove oil filler screw to bleed air in the reservoir.
4. Ensure oil level is just below the rim of the oil filler screw hole. Reinstall the oil filler screw.

### For model ATD-7434 only:

1. Pour a teaspoon of good quality air tool lubricant into the air supply inlet (See Figure 2). Connect to air supply and operate for 3 seconds to evenly distribute lubricant.
2. Air actuated product is fitted to accept the popular 1/4" NPT air nipple. When installing air nipple, ensure thread sealing compound is used on connections. Be careful not to allow compound to enter air supply inlet orifice. Application of thread tape is acceptable, but ensure that it is not applied beyond the first machine thread.

### Raise Saddle:

Caution! For model ATD-7434, do not operate the jack by pumping the lift pedal and pressing the air pump pedal at the same time.

1. Pump foot pedal or press air pump pedal until saddle reaches desired position.
2. Follow vehicle manufacturers recommended procedures for removing the load as outlined in vehicle service manual or repair guide.
3. Secure load with provided chains.
4. Ensure load's center of gravity is centered on the saddle and load is stable before moving jack.

### Lower Saddle:

Caution! Be sure all tools and personnel are clear before lowering load. Slowly, gently apply downward pressure to the release valve pedal.

## ! WARNING



To avoid crushing and related injuries:  
NEVER work on, under or around a load supported only by a jack. Immediately transfer the load to an appropriate work station.

## MAINTENANCE

**Important:** Use only good grade hydraulic jack oil. Avoid mixing different types of fluid and NEVER use brake fluid, turbine oil, transmission fluid, motor oil or glycerin. Improper fluid can cause premature failure of the jack and the potential for sudden and immediate loss of load. We recommend Mobil DTE 13M or equivalent.

On air actuated model, periodically check for leaks at air connections. Replace connections as needed.

### Adding oil:

1. With saddle fully lowered, set jack in its upright, level position. Remove oil filler screw.
2. Fill until oil is level with the filler screw hole, reinstall oil filler screw.

### Changing oil:

For best performance and longest life, replace the complete fluid supply at least once per year.

1. With saddle fully lowered, set jack in its upright, level position. Remove the oil filler screw.
2. Lay the jack on its side and drain the fluid into a suitable container.

Note: Dispose of hydraulic fluid in accordance with local regulations.

3. Set jack in its level, upright position and fill with oil until just below the rim of the oil filler hole.
4. Reinstall the oil filler screw.

### Lubrication:

1. A periodic coating of light lubricating oil to pivot points, axles and hinges will help to prevent rust and assure that wheels, casters and pump assemblies move freely.
2. When used on a daily basis, air pump model should be internally lubricated before each use. Use only good quality air tool lubricant. If no inline oiler is used, pour a teaspoon of air tool oil into the inlet of the air supply inlet. Simply operate the jack using the air feature in order to fully distribute the oil.

### Cleaning:

Periodically check the ram for signs of rust or corrosion. Clean as needed and wipe with an oily cloth.

Note: Never use sandpaper or abrasive material on these surfaces!

### Storage:

When not in use, store the jack with saddle in lowest position and air supply disconnected.

## REPLACEMENT PARTS:

Not all components of the jack are replacement items, but are illustrated as a convenient reference of location and position in the assembly sequence. When ordering parts, give part number and the description on page 6 & 7. Call your distributor for current pricing.

## TROUBLESHOOTING

Symptom	Possible Causes	Corrective Action
Jack will not lift load	<ul style="list-style-type: none"> <li>• Air supply inadequate (Model ATD-7434 only)</li> <li>• Hydraulic unit malfunction</li> </ul>	<ul style="list-style-type: none"> <li>• Ensure adequate air supply (Model ATD-7434 only)</li> <li>• Contact Tech. Service (888) 332-6419</li> </ul>
Jack bleeds off after lift	<ul style="list-style-type: none"> <li>• Overload condition</li> <li>• Hydraulic unit malfunction</li> </ul>	<ul style="list-style-type: none"> <li>• Remedy overload condition</li> <li>• Contact Tech. Service (888) 332-6419</li> </ul>
Jack will not lower after unloading	<ul style="list-style-type: none"> <li>• Reservoir overfilled</li> <li>• Linkage binding</li> </ul>	<ul style="list-style-type: none"> <li>• Drain fluid to proper level</li> <li>• Clean and lubricate moving parts</li> </ul>
Poor lift performance	<ul style="list-style-type: none"> <li>• Fluid level low</li> </ul>	<ul style="list-style-type: none"> <li>• Ensure proper fluid level</li> </ul>
Will not lift to full extension	<ul style="list-style-type: none"> <li>• Fluid level low</li> </ul>	<ul style="list-style-type: none"> <li>• Ensure proper fluid level</li> </ul>

# Model ATD-7433

Item	Part #	Description	Qty
1	324-4-1900-309	Screw Assembly	2
2	G37-3-1320-109	Bracket	2
3	G37-3-1806-105	Handle	1
4	G36-3-1900-100	Lift Pedal	1
5	G36-6-1809-102	Release Valve Pedal	1
6	G37-6-1319-102	Support Bar	4
7	G37-3-3300-103	Base Half	2
8	N/A	Bolt	4
9	G37-4-5200-105	Caster w/out Brake	2
10	G37-4-5201-107	Caster with Brake	2
11	G36-3-2300-101	Tilt Screw Assembly	1
12	G36-3-2301-103	Tilt Screw Assembly	1
13	G37-3-4200-104	Saddle Plate	1
14	G52-4-4102-101	Chain & Hook	2
15	G37-3-2903-209	Saddle Support Bar	4
16	G37-3-2902-207	Saddle Adjustable Bracket	2
17	G37-3-2901-205	Saddle Support Seat	1
-	G37-3-9901-109	Repair Kit for Hydraulic	-
-	ATD7433-L0	Unit Product Label	-
-	ATD-7434-M0	Manual	-

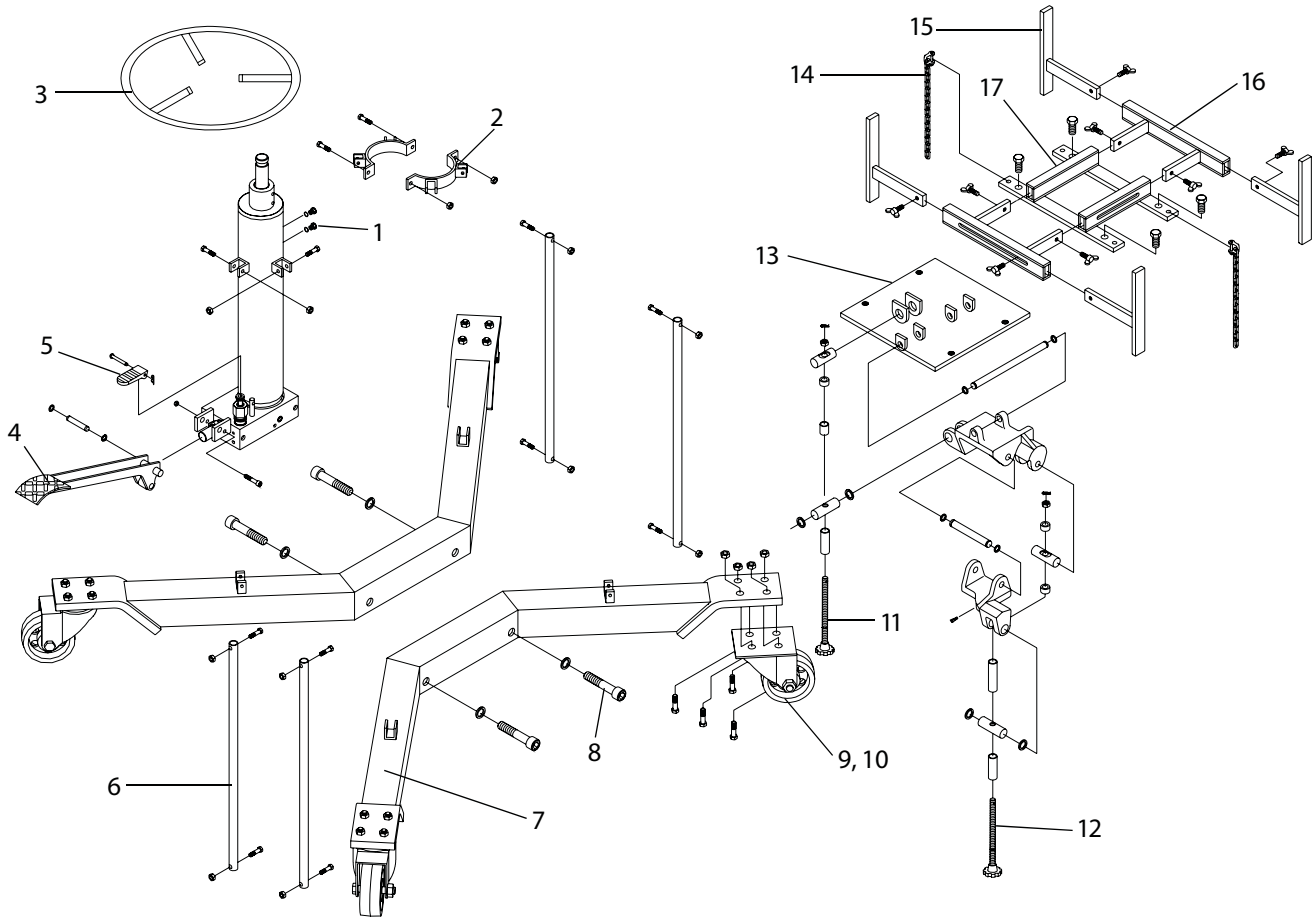


Figure 3 - Replacement Parts Illustration for model ATD-7433

# Model ATD-7434

Item	Part #	Description	Qty
1	324-4-1900-309	Screw Assembly	2
2	G37-3-1320-109	Bracket	2
3	G37-3-1806-105	Handle	1
4	G36-3-1900-100	Lift Pedal	1
5	G36-6-1809-102	Release Valve Pedal	1
6	A240-02400-000	Male Coupler	1
7	G36-6-2302-103	Hose Connector	2
8	G36-6-2300-109	Air Hose	1
9	G36-3-2000-109	Air Motor	1
10	G37-6-1319-102	Support Bar	4
11	G37-3-3300-103	Base Half	2
12	651-1-0127-100	Bolt	4
13	G37-4-5200-105	Caster w/out Brake	2
14	G37-4-5201-107	Caster with Brake	2
15	G36-3-2300-101	Tilt Screw Assembly	1
16	G36-3-2301-103	Tilt Screw Assembly	1
17	G37-3-4200-104	Saddle Plate	1
18	G52-4-4102-101	Chain & Hook	2
19	G37-3-2903-209	Saddle Support Bar	4
20	G37-3-2903-209	Saddle Adjustable Bracket	2
21	G37-3-2901-205	Sadle Support Seat	1
-	G37-3-9901-109	Repair Kit for Hydraulic Unit	-
-	ATD7433-L0	Product Label	-
-	ATD-7434-M0	Manual	-

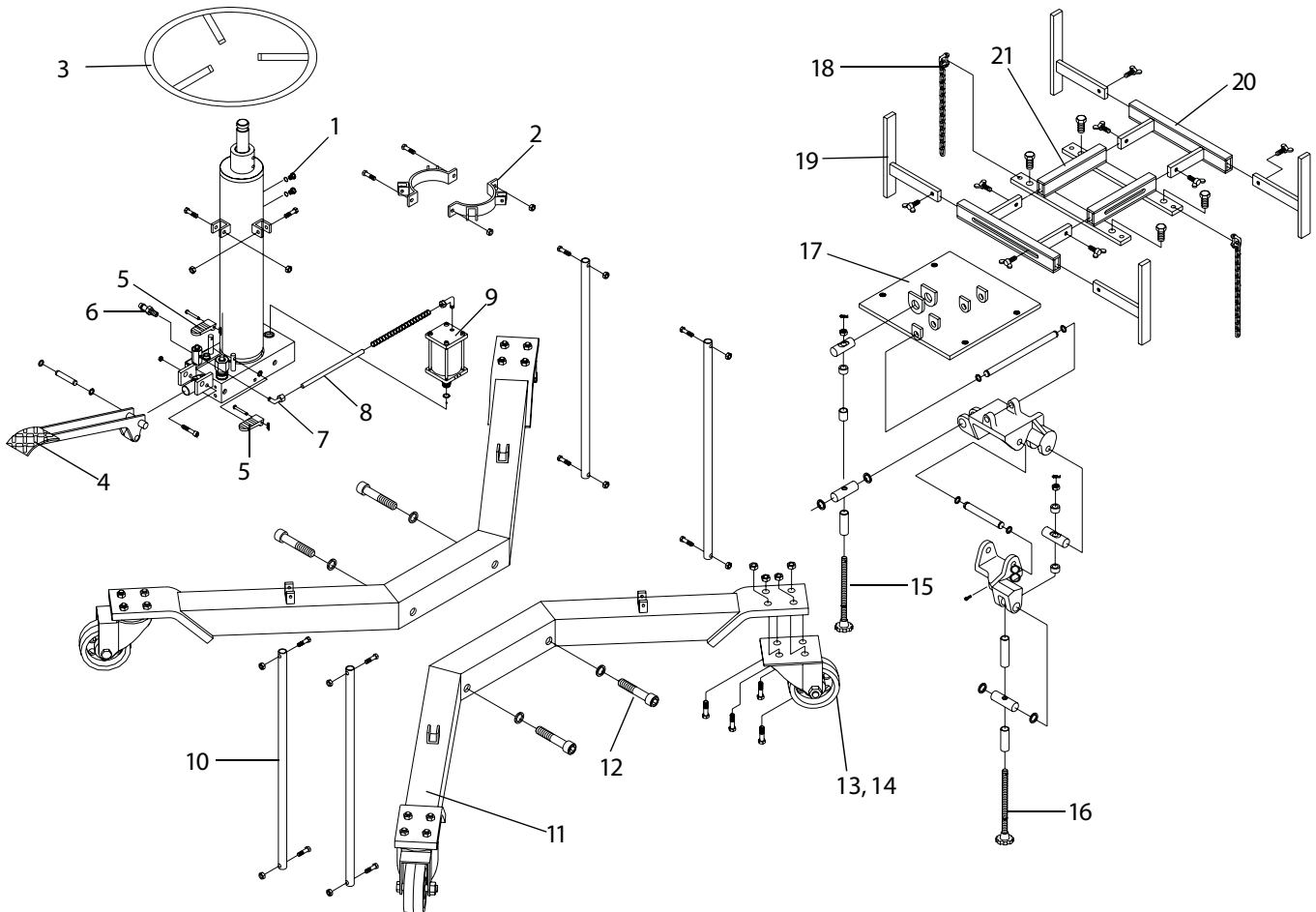


Figure 4 - Replacement Parts Illustration for model ATD-7434

## ONE YEAR LIMITED WARRANTY

For a period of one (1) year from date of purchase, **ATD Tools, Inc.** will repair or replace, at its option, without charge, any of its products which fails due to a defect in material or workmanship, or which fails to conform to any implied warranty not excluded hereby.

Performance of any obligation under this warranty may be obtained by contacting your distributor or point of sale for further instructions. Please retain your proof of purchase, as it will be needed for any claim.

Except where such limitations and exclusions are specifically prohibited by applicable law, (1) the CONSUMER'S SOLE AND EXCLUSIVE REMEDY SHALL BE THE REPAIR OR REPLACEMENT OF DEFECTIVE PRODUCTS AS DESCRIBED ABOVE, and (2) **ATD Tools, Inc.** SHALL NOT BE LIABLE FOR ANY CONSEQUENTIAL OR INCIDENTAL DAMAGE OR LOSS WHATSOEVER, and (3) THE DURATION OF ANY AND ALL EXPRESSED AND IMPLIED WARRANTIES, INCLUDING WITHOUT LIMITATION, ANY WARRANTIES OF MERCHANTABILITY AND FITNESS FOR A PARTICULAR PURPOSE, IS LIMITED TO A PERIOD OF ONE (1) YEAR FROM DATE OF PURCHASE.

Some states do not allow limitations on how long an implied warranty lasts, so the above limitation may not apply to you. Some states do not allow the exclusion or limitation of incidental or consequential damages, so the above limitation or exclusion may not apply to you. This warranty gives you specific legal rights, and you may also have other rights which vary from state to state.



# Notes

---

---

---

---

---

---

---

---

---

---

---

---

---

---

---

---

---

---

---

---

---

---

---

