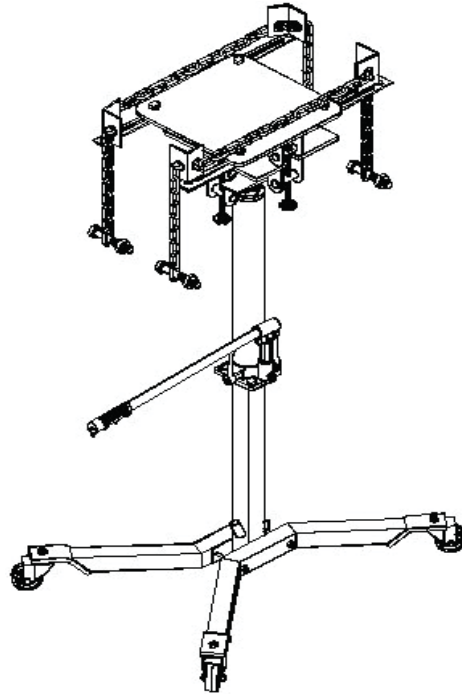




High Lift Transmission Jack Owner's Manual

**Model
ATD-7425**

**Capacity
700 lbs.**



This is the safety alert symbol. It is used to alert you to potential personal injury hazards. Obey all safety messages that follow this symbol to avoid possible injury or death.

ADVERTENCIA

- Leer, comprender, y seguir las instrucciones antes de utilizar el aparato.
- El manual de instrucciones y la información de seguridad deben estar comunicado en lengua del operador antes del uso.
- No seguir estas indicaciones puede causar daños personales o materiales.

WARNING

To avoid **crushing and related injuries**:



NEVER work on, under or around a load supported only by a hydraulic jack. **Transfer** the load immediately to a suitable workstation!

Read this manual and follow all the Safety Rules and Operating Instructions before using this product.

WARNING

WARNING: This product may contain chemicals, including lead, known to the State of California to cause cancer, birth defects or other reproductive harm. *Wash hands after handling.*

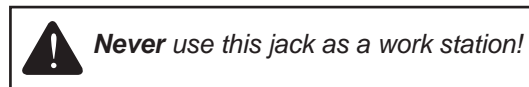
SAFETY and GENERAL INFORMATION

Save these instructions. For your safety, read, understand, and follow the information provided with and on this jack before using. The owner and operator of this equipment shall have an understanding of this jack and safe operating procedures before attempting to use. The owner and operator shall be aware that use and repair of this product may require special skills and knowledge. Instructions and safety information shall be conveyed in the operator's native language before use of this jack is authorized. If any doubt exists as to the safe and proper use of this jack, remove from service immediately.

Inspect before each use. Do not use if broken, bent, cracked or damaged parts are noted. Any jack that appears damaged in any way, or operates abnormally shall be removed from service immediately. If the jack has been or suspected to have been subjected to a shock load (a load dropped suddenly, unexpectedly upon it), immediately discontinue use until jack has been checked by a factory authorized service center (contact distributor or manufacturer for list of authorized service centers). It is recommended that an annual inspection be done by qualified personnel. Labels and Operator's Manuals are available from manufacturer.

PRODUCT DESCRIPTION

This Hydraulic Transmission Jack is designed to be used as an aid in the removal and installation of automotive and light truck transmissions, transfer cases and transaxles. This jack is for use under a properly secured, overhead lift or a garage pit.



SPECIFICATIONS

Model	Capacity	Base Size (L x W)	Hydraulic Lift	Min. Height	Max. Height	Saddle Base	Saddle Area Min.	Exp. Saddle Area Max.
ATD-7425	700 lbs.	36-1/8" X 32-5/8"	19-1/8"	57-1/4"	76-3/8"	9-7/8" x 9-7/8"	9-7/8" x 9-7/8"	18-7/8" x 18-7/8"

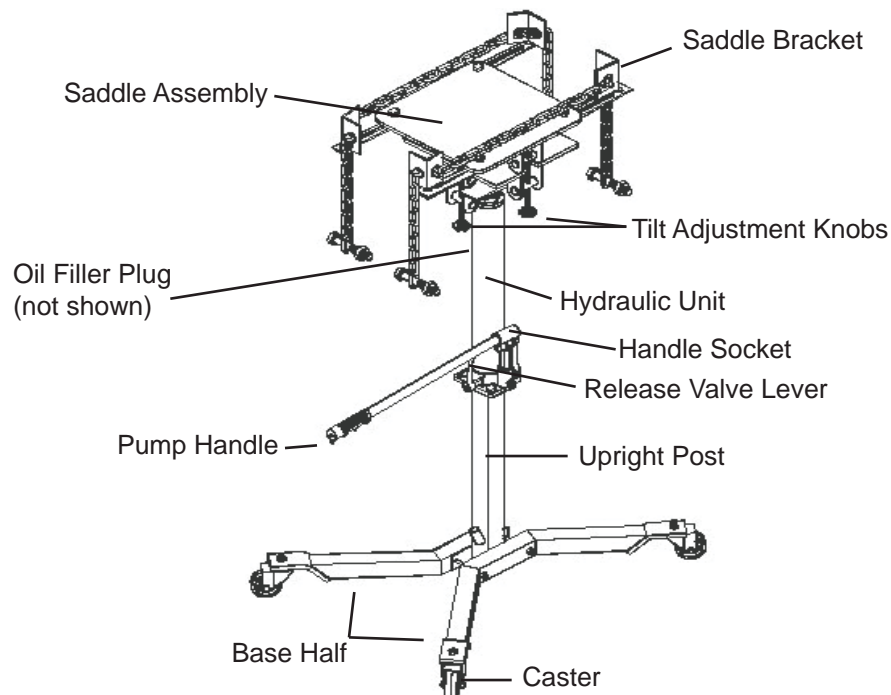


Figure 1 - ATD-7425 nomenclature

PREPARATION

Assembly

Refer to Figure 1 & 2:

1. Attach the base halves (#1) to the upright post (#2), then secure using bolt rods, washers and M12 nuts (#3, 4 & 5) provided.
2. Attach all four casters (#6) to the base halves (#1) using the washers and M12 nuts (#4 & 5) provided.
3. Place hydraulic unit (#7) on top of the upright post (#2) and secure with M10x25 bolts and washers (#8 & 9).
4. Attach saddle assembly (#10) above the ram of hydraulic unit (#7) using pin and spring pin (#11 & 12).
5. Attach all four bracket supports (#13) onto the saddle plate with bolts, flat washers and wing nuts (#14, 15, & 15a).
6. Attach saddle brackets (#16) to bracket support (#13) with provided nuts (#17)
7. Finally, attach chains (#18) with bolts, flat washers, and nuts (#19, 20, & 15a).

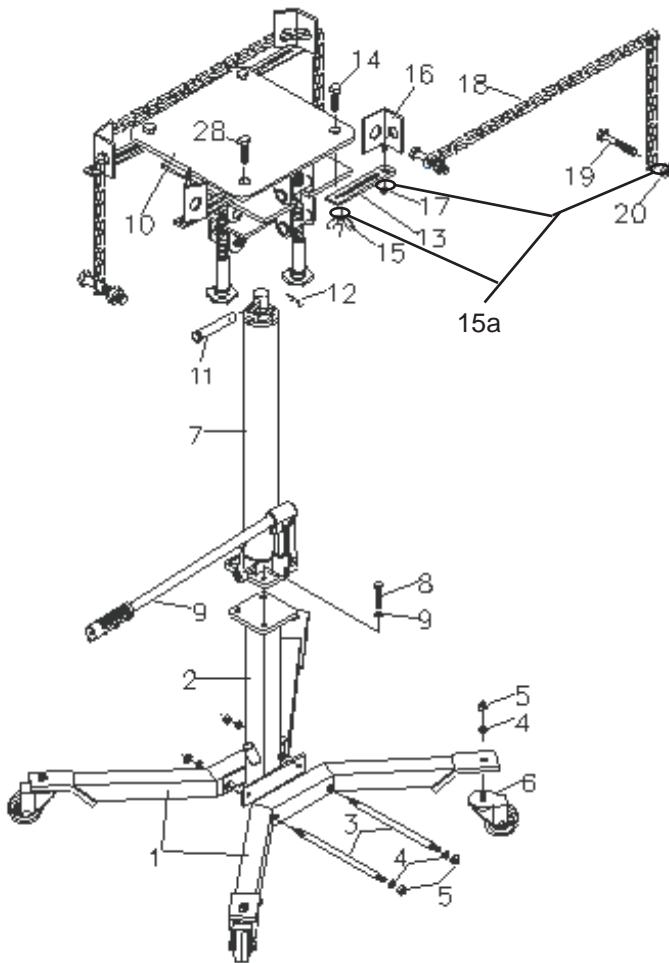


Figure 2 - ATD-7425 Assembly



Ensure all fasteners are secure before use.

Before Use

1. Verify that the product and application are compatible, if in doubt call for Technical Assistance (888) 332-6419.
2. Before using this product, read the operator's manual completely and familiarize yourself thoroughly with the product, its components and recognize the hazards associated with its use.
3. To familiarize yourself with basic operation of the jack, locate and turn release valve lever:
 - a. Clockwise until firm resistance is felt to further turning. This is the '**CLOSED**' release valve position used to **raise** the saddle.
 - b. Counter-clockwise, but no more than 2 turns from the closed position. This is the '**OPEN**' release valve position used to **lower** the saddle.
4. With saddle fully lowered, remove the oil filler plug. Insert handle into handle socket and pump 6 to 8 full strokes. Check oil level. Proper oil level is just below the rim of the opening of the oil filler plug hole. Reinstall the oil filler plug.
5. Ensure that jack rolls freely. Raise and lower the unloaded saddle throughout the lifting range before putting into service to ensure the pump operates smoothly. Replace worn or damaged parts and assemblies with Factory Authorized Replacement Parts only.

Bleeding / Venting Trapped Air

With the release valve in the OPEN position (3b.) and with saddle fully lowered, locate and remove the oil filler plug. Pump 6 to 8 full strokes. This will help release any pressurized air which may be trapped within the reservoir. Reinstall the oil filler plug.

OPERATION s(see Fig. 1, 2 & 3)

Raise Saddle Assembly

1. Locate and close release valve by turning lever clockwise firmly, then pump the handle until the load is contacted.
2. Follow vehicle manufacturers recommended procedures for removing the transmission, transfer case or transaxle as outlined in vehicle service manual or repair guide.
3. Secure load with provided chains.



Ensure the transmission is centered on the jack. An off-center load could cause the jack to tip over resulting in personal injury or property damage.

Lower Saddle Assembly



*Be sure all tools and personnel are clear before lowering load. **Slowly open the release valve!** The more you turn the knob counter-clockwise, the faster the load will come down. **Maintain control** of the rate of speed at which the load lowers at all times!*

1. Secure the load to the jack with provided chain.
2. *Slowly, gently,* turn release valve counter-clockwise to lower load, but no more than 2 full turns until load is fully lowered.
3. Immediately transfer the load to an appropriate repair fixture.



WARNING

To avoid **crushing and related injuries**:



NEVER work on, under or around a load supported only by a hydraulic jack. **Transfer** the load immediately to a suitable workstation!



ADVERTENCIA

- Leer, comprender, y seguir las instrucciones antes de utilizar el aparato.
- El manual de instrucciones y la información de seguridad deben estar comunicado en lengua del operador antes del uso.
- No seguir estas indicaciones puede causar daños personales o materiales.



WARNING

- **Read, understand, and follow** all printed material provided with and on this product **before use**.
- **Do not** exceed rated capacity.
- Use **only** on hard, level surfaces.
- **Adequately support the vehicle before starting repairs.**
- If loaded jack must be moved, make certain that load is secured by appropriate means, is stable, is in the **lowest possible position**, is moved over a smooth, hard level surface and that the **lifting platform is level**.
- Use of this product is **limited to removal, installation, and transportation** in the lowest position of **automotive and light truck transmissions, transfer cases and transaxles**.
- Use only adapters / accessories provided by the manufacturer of this transmission jack.
- Use only adapters / accessories whose **rated capacity is greater** than the rated capacity of this jack.
- Ensure the center of gravity is **center loaded** on the saddle.
- Never use this device as a work/repair station. **Transfer the load immediately** to a suitable work station.
- **Be alert** and **sober** when using this product. Do not operate under the influence of drugs or alcohol.
- No alteration shall be made to this product.
- **Failure to heed** these markings may **result in personal injury and/or property damage**.

MAINTENANCE

Important: Use only good grade hydraulic jack oil. Avoid mixing different types of fluid and **NEVER** use brake fluid, turbine oil, transmission fluid, motor oil or glycerin. Improper fluid can cause premature failure of the jack and the potential for sudden and immediate loss of load. We recommend Mobil DTE 13M or equivalent.

Adding oil

1. With saddle fully lowered set jack in its upright, level position. Remove oil filler plug.
2. Fill with oil until level with oil filler hole. Reinstall the oil filler plug.

Changing oil

For best performance and longest life, replace the complete fluid supply at least once per year.

1. With saddle fully lowered, remove the oil filler plug.
2. Lay the jack on its side and drain the fluid into a suitable container.
3. Fill with oil until level with oil filler plug hole. Reinstall oil filler plug.

Note. Dispose of hydraulic fluid in accordance with local regulations.

Lubrication

A periodic coating of light lubricating oil to pivot points, axles and hinges will help to prevent rust and assure that wheels, casters and pump assemblies move freely.

Cleaning

Periodically check the pump piston and ram for signs of rust or corrosion. Clean as needed and wipe with an oily cloth.

Note: Never use sandpaper or abrasive material on these surfaces!

Storage

When not in use, store the jack with saddle and handle socket fully lowered.

TROUBLESHOOTING

Symptom	Possible Causes	Corrective Action
Jack will not lift load	<ul style="list-style-type: none"> • Release valve not tightly closed • Load is too heavy 	<ul style="list-style-type: none"> • Ensure release valve tightly closed • Consider a higher capacity jack
Jack will lift, but not maintain pressure	<ul style="list-style-type: none"> • Release valve not tightly closed • Hydraulic unit malfunction 	<ul style="list-style-type: none"> • Ensure release valve tightly closed • Discontinue use, contact Technical Service (888) 332-6419
Jack will not lower after unloading	<ul style="list-style-type: none"> • Reservoir overfilled • Linkages binding • Fluid level low 	<ul style="list-style-type: none"> • Drain fluid to proper level • Clean and lubricate moving parts • Ensure proper fluid level
Poor lift performance	<ul style="list-style-type: none"> • Fluid level low • Air trapped in system 	<ul style="list-style-type: none"> • Ensure proper fluid level • With ram fully retracted, remove oil filler plug to let pressurized air escape. Reinstall oil filler plug
Will not lift to full extension	<ul style="list-style-type: none"> • Fluid level low 	<ul style="list-style-type: none"> • Ensure proper fluid level

REPLACEMENT PARTS

Not all components of the jack are replacement items, but are illustrated as a convenient reference of location and position in the assembly sequence. When ordering parts, give model number, part number and description. Contact your distributor for current pricing.

Model ATD-7425:

Item	Part#	Description	Qty	Item	Part#	Description	Qty
1	5905-00100-100	Oil Filler Plug	1	7	T250-90037-003	Bolt Assy.	2
2	BL8A-10000-000	Hydraulic Unit	1	8	T250-08000-000	Tilt Screw	2
3	BL80-20000-000	Pump Handle	1	9	L100-05000-000	Chain Assy.	2
4	T250-01000-000	Base Half	2	10	T250-04000-000	Saddle Bracket	4
5	T250-90037-001	Caster Assy.	4	11	T250-03000-000	Saddle Assy.	1
6	BL80-16002-000	Release Valve Lever	1	-	T250-90009-K01	Hardware Kit	-
				-	ATD7425-L0	Product Label	-
				-	ATD7425-M1	Manual	-

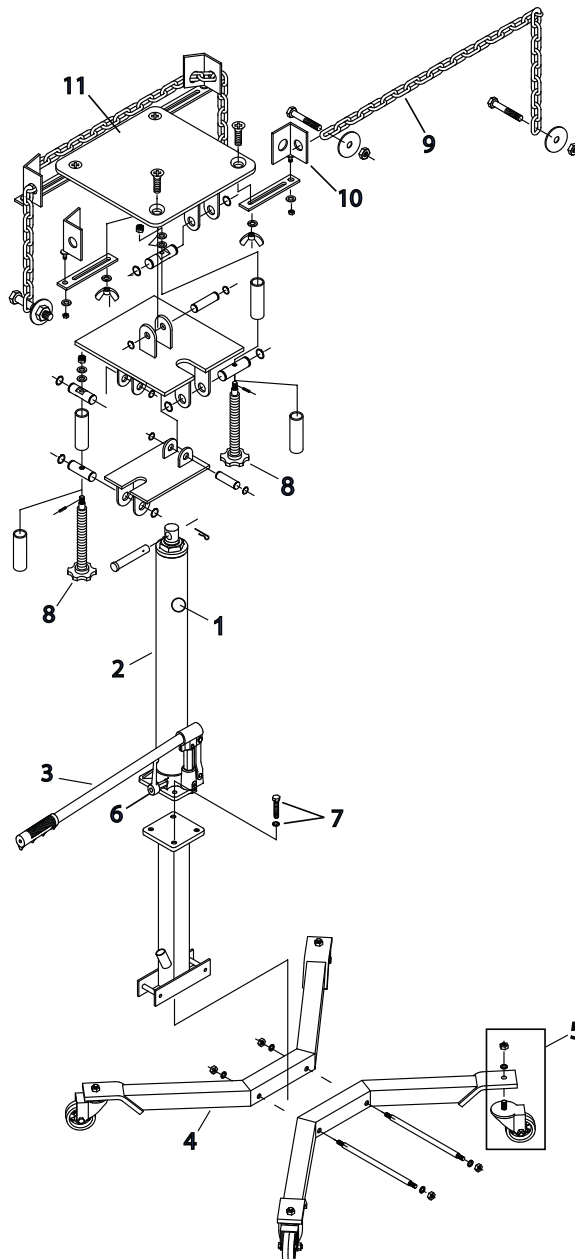


Figure 3 - ATD-7425 Replacement Parts

ONE YEAR LIMITED WARRANTY

For a period of one (1) year from date of purchase, **ATD Tools, Inc.** will repair or replace, at its option, without charge, any of its products which fails due to a defect in material or workmanship, or which fails to conform to any implied warranty not excluded hereby.

Performance of any obligation under this warranty may be obtained by contacting your distributor or point of sale for further instructions. Please retain your proof of purchase, as it will be needed for any claim.

Except where such limitations and exclusions are specifically prohibited by applicable law, (1) the CONSUMER'S SOLE AND EXCLUSIVE REMEDY SHALL BE THE REPAIR OR REPLACEMENT OF DEFECTIVE PRODUCTS AS DESCRIBED ABOVE, and (2) **ATD Tools, Inc.** SHALL NOT BE LIABLE FOR ANY CONSEQUENTIAL OR INCIDENTAL DAMAGE OR LOSS WHATSOEVER, and (3) THE DURATION OF ANY AND ALL EXPRESSED AND IMPLIED WARRANTIES, INCLUDING WITHOUT LIMITATION, ANY WARRANTIES OF MERCHANTABILITY AND FITNESS FOR A PARTICULAR PURPOSE, IS LIMITED TO A PERIOD OF ONE (1) YEAR FROM DATE OF PURCHASE.

Some states do not allow limitations on how long an implied warranty lasts, so the above limitation may not apply to you. Some states do not allow the exclusion or limitation of incidental or consequential damages, so the above limitation or exclusion may not apply to you. This warranty gives you specific legal rights, and you may also have other rights which vary from state to state.



ATD Tools, Inc.
160 Enterprise Drive
Wentzville, MO 63385
www.atdtools.com