



## ATD-7414A Brake Drum Handler Owner's Manual



### Features:

- Ideal for removing and installing truck brake drums
- Detachable handle for convenient storage

### Specifications:

- Capacity: 750 lbs.
- Drum Sizes: 15" & 16-1/2"
- Overall: 61-7/16" x 22-1/4" x 20-1/2"
- Low Lift Height: 10-1/4"
- High Lift Height: 15-1/4"
- Wheel Diameter: 7-3/4"

**Save these instructions.** For your safety, read and understand the information contained within. The owner and operator should have an understanding of this product and safe operating procedures before attempting to use this product. Instructions and safety information should be conveyed in the operator's native language before use of this product is authorized. Make certain that the operator thoroughly understands the inherent dangers associated with the use and misuse of the product. If any doubt exists as to the safe and proper use of this product as outlined in this factory authorized manual, remove from service immediately. **Inspect before each use.** Do not use if broken, bent, cracked or otherwise damaged parts are noted. If the brake drum handler has been or suspected to have been subjected to a shock load (a load dropped suddenly and unexpectedly upon it), discontinue use until checked out by a service center. Owners and operators of this equipment shall be aware that the use of this equipment may require special training and knowledge. It is recommended that an annual inspection be done by qualified personnel and that any missing or damaged decals, warning / safety labels or signs be replaced with factory authorized replacement parts only. Any brake drum handler that appears to be damaged in any way, is worn or operates abnormally should be removed from service immediately.

## PRODUCT DESCRIPTION

ATD Tools Brake Drum Handler is designed for the removal, installation, and transport of compatible brake drums and brake drum / hub assemblies.

## SPECIFICATIONS

Model	Min. Height	Max. Height	Product Size (L x W x H )	Wheel Dia.	Weight
ATD-7414A	10-1/4"	15-1/4"	61-7/16" x 22-1/4" x 20-1/2"	7-3/4"	60 lbs.

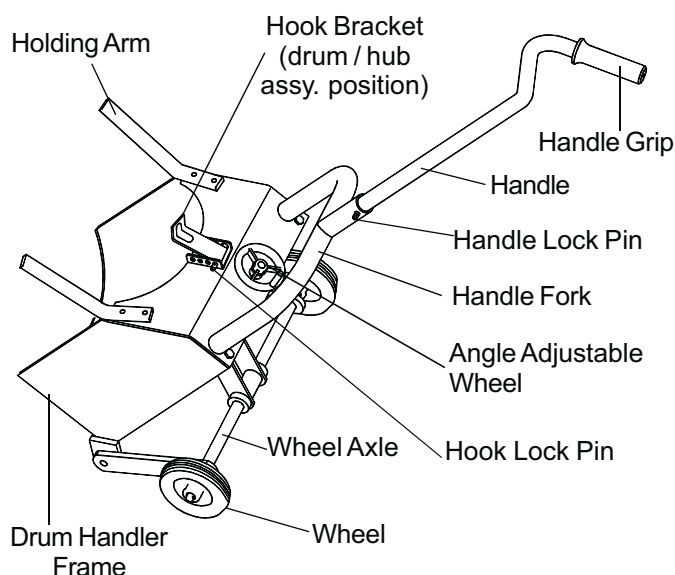


Figure 1 - Model ATD-7414A components



## WARNING

- Study, understand, and follow all instructions provided with and on this device before use.
- Inspect before use. Do not use if bent, broken, cracked or otherwise damaged components are noted.
- Use only for removal, installation, and transport of brake drums which configuration is compatible with this device.
- Secure drum before transporting.
- Use only on hard, level surface.
- Raise and lower the brake drum slowly.
- Always wear steel-toed shoes when using this device.
- Brake drum dust is hazardous to your health.
- Consult Federal, State and local regulations concerning the safe handling of asbestos and what precautions to take when handling.
- Failure to heed these warnings may result in personal injury and/or property damage.

## BEFORE USE

1. Read and understand instructions and warning materials provided with and on this product.
2. Verify that the product and the application are compatible.
3. Thoroughly familiarize yourself with this product.
4. Inspect drum handler before each use. Do not use if bent, broken or cracked components are noted. Ensure that all parts move freely.
5. Consult the vehicle manufacturer's service manual for proper preparation and procedures for removing & installing your particular brake drum.

## ASSEMBLY (refer to figure 4 on page 4)

1. Insert the handle (8) into the holder, and install the cotterless hitch pin (25).
2. Assemble the two drum stops (7) on the outside of the drum dolly frame using bolts (15), washers (17), and locknuts (18).

## OPERATION

1. Prepare the brake drum or brake drum/hub assembly for removal according to the instructions in vehicle service manual.
2. Place drum handler in a horizontal position.
3. Turn the angle adjustable wheel until the drum handler is in its lowest position.
4. Position the handler under the drum until the holding arms meet the outer surface of the drum.
5. Turn the angle adjustable wheel clockwise until the handler meets the lower surface of the drum.
6. Lower the handle to slightly lift the drum. Pull the handler and drum back, away from the brake assembly.
7. For removing/installing drum only:  
Flip the hook bracket into the hub opening of the drum as shown in figure 2.
8. For removing/installing drum and hub as an assembly:  
Position the hook bracket reverse as shown in figure 3 to allow a wheel nut to secure hook to drum/hub assembly.
8. It may be necessary to adjust the hook. Remove the hook lock pin, and move the hook bracket to any one of four hole locations.
9. Pull the drum completely away from the brake assembly. Slowly and carefully lift the handle to place the drum face down on the floor, being cautious of the transfer of load weight.

**Note:** Reverse the process to install the brake drum back to the brake assembly. Be sure to align the drum with the studs and follow the instructions in the vehicle service manual.

## MAINTENANCE

Periodically inspect the drum handler. Ensure all parts move freely. If rust appears, sand affected area and cover with suitable utility paint. When not in use, store drum handler in upright position and in a clean, dry area.

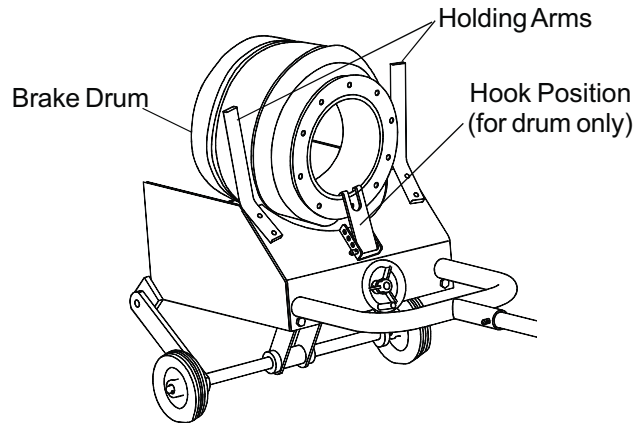


Figure 2 - Illustration for removing/installing drum

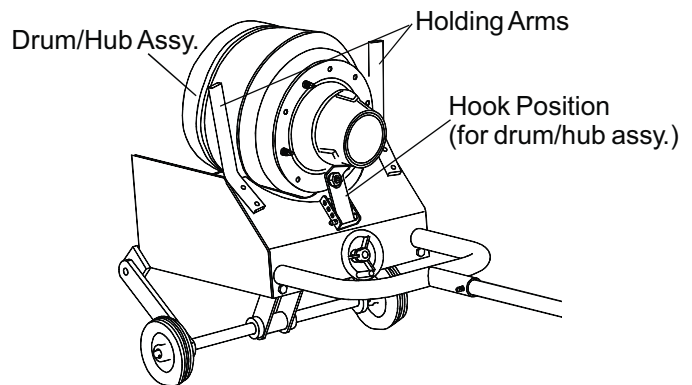
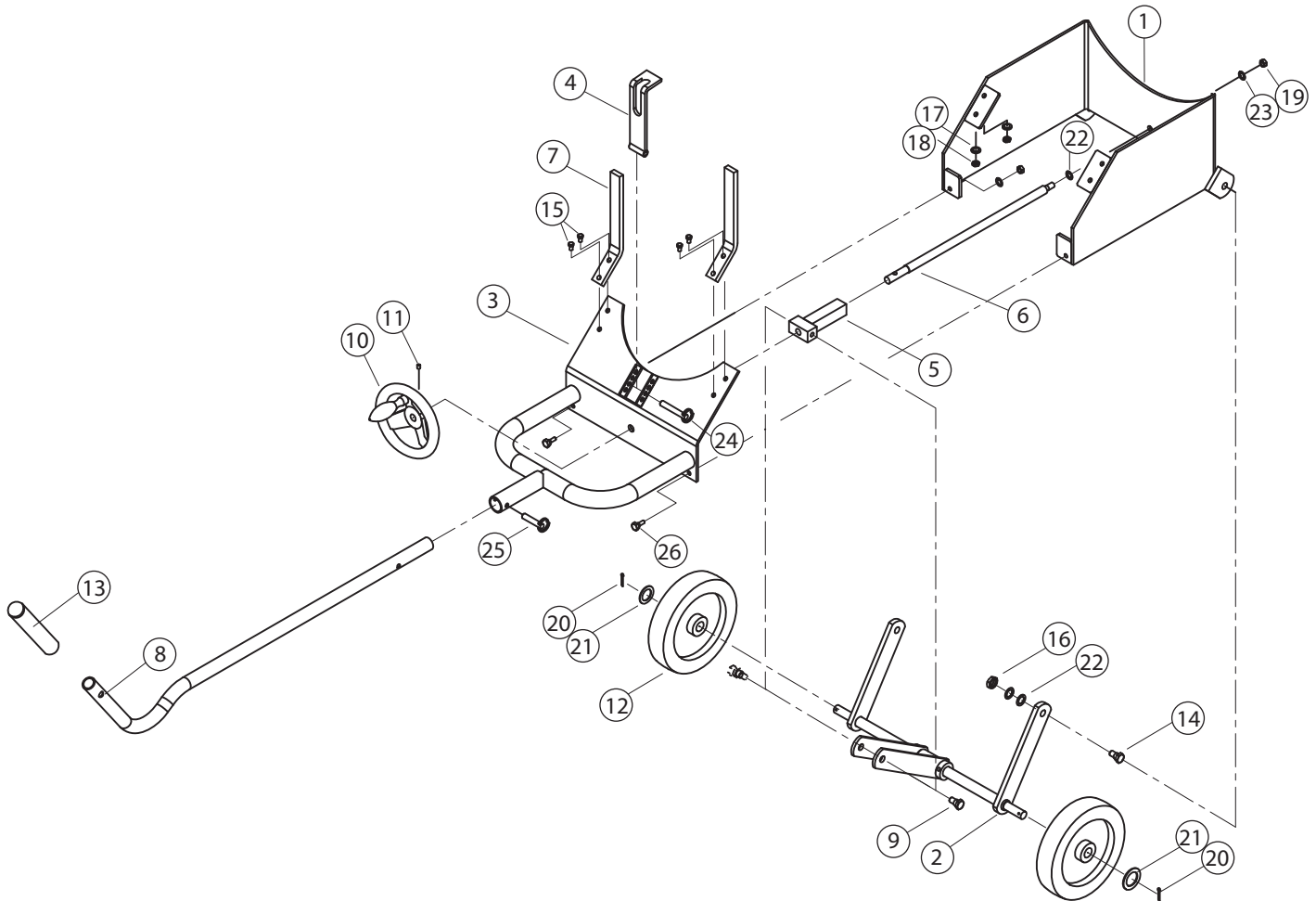


Figure 3 - Illustration for removing/installing drum/hub assembly

## REPLACEMENT PARTS

Not all components of this product are replacement items, but are illustrated as a convenient reference for position in the assembly sequence. When ordering parts, give model number, part number and description. Call your distributor for current pricing:



ITEM#	ORDERING PART#	PART DESCRIPTION	QTY
1	PRT7414A-01	FRAME ASSEMBLY	1
2	PRT7414A-02	AXLE ASSEMBLY	1
3	PRT7414A-03	PLATE ASSEMBLY	1
4	PRT7414A-04	HOOK	1
5	PRT7414A-05	DRIVE SCREW KIT	1
6	PRT7414A-05	DRIVE SCREW KIT	1
7	PRT7414A-07	STOP BAR	2
8	PRT7414A-08	HANDLE ASSY (8, 13 & 25)	1
9	PRT7414A-HK	BOLT, M10	2
10	PRT7414A-05	DRIVE SCREW KIT	1
11	PRT7414A-05	DRIVE SCREW KIT	1
12	PRT7414A-12	WHEEL ASSY	2
13	PRT7414A-08	HANDLE ASSY (8, 13 & 25)	1

ITEM#	ORDERING PART#	PART DESCRIPTION	QTY
14	PRT7414A-HK	BOLT, M12	2
15	PRT7414A-HK	BOLT, M12	4
16	PRT7414A-HK	LOCK NUT, M12	2
17	PRT7414A-HK	WASHER, M6	6
18	PRT7414A-HK	LOCK NUT, M6	6
19	PRT7414A-05	DRIVE SCREW KIT	1
20	PRT7414A-12	WHEEL ASSY	2
21	PRT7414A-12	WHEEL ASSY	2
22	PRT7414A-05	DRIVE SCREW KIT	5
23	PRT7414A-05	DRIVE SCREW KIT	1
24	PRT7414A-HK	PIN A, 70mm	1
25	PRT7414A-08	HANDLE ASSY (8, 13 & 25)	1
26	PRT7414A-HK	BOLT, M6	2

PRT7414A-05 - Drive Screw Kit item #'s 5, 6, 10, 11, 19, 22 & 23

PRT7414A-08 - Handle Assembly includes item #'s 8, 13 & 25

PRT7414A-12 - Wheel Assembly includes item #'s 12, 20 & 21

PRT7414A-HK - Hardware Kit includes item #'s 9, 11, 14, 15, 16, 17, 18, 19, 20, 21, 22, 23, 24, 25 & 26



THIS WARRANTY AND CONFIRMED RECEIPT(S) SHOULD BE RETAINED BY THE CUSTOMER AT ALL TIMES

PURCHASED FROM: \_\_\_\_\_

DATE PURCHASED: \_\_\_\_\_

INVOICE/RECEIPT NUMBER: \_\_\_\_\_

Your ATD-7414A is warranted for a period of 12 months from the original purchase date.

For a period of one (1) year from your purchase date, ATD Tools Inc. will repair or replace (at its option) without charge, your ATD product if it was purchased new and the product has failed due to a defect in material or workmanship which you experienced during normal use of the product. This limited warranty is your exclusive remedy.

To access the benefits of this warranty, contact your supplier, or point of sale directly. You may be advised to return the product under warranty, freight prepaid, to your supplier for warranty determination.

If this ATD product is altered, abused, misused, modified, or undergoes service by an unauthorized technician, your warranty will be void. We are not responsible for damage to ornamental designs you place on this ATD product and such ornamentation should not cover any warnings or instructions or they may void the warranty. This warranty does not cover scratches, superficial dents, and other abrasions to the paint finish that occur under normal use. It also does not cover normal wear items such as but not limited to brushes, batteries, drill bits, drill chucks, pads or blades.

Subject to the law in your state:

- (1) Your sole and exclusive remedy is repair or replacement of the defective product as described above.
- (2) ATD is not liable for any incidental damages, including but not limited to, lost profits and unforeseeable consequences.
- (3) The repair and replacement of this product under the express limited warranty described above is your exclusive remedy and is provided in lieu of all other warranties, express or implied. All other warranties, including implied warranties and warranties of merchantability or fitness for a particular purpose are disclaimed and, if disclaimer is prohibited, these warranties are limited to one year from your date of purchase of this product.

Some states' laws do not allow limited durations on certain implied warranties and some states' laws do not allow limitations on incidental or consequential damages. You should consult the law in your state to determine how your rights may vary.

[Affix receipt or invoice here for safe keeping]