



5,500 lbs.
Pallet Jack

ATD-7406
Operating Instructions & Parts Manual

Capacity
5,500 lbs.



The safety alert symbol is used to alert you to potential personal injury hazards. Obey all safety messages that follow this symbol to avoid possible injury or property damage.

Read this manual and follow all Safety Rules and Operating Instructions before using this product.

⚠ WARNING ⚠

WARNING: This product may contain chemicals, including lead, known to the State of California to cause cancer, birth defects or other reproductive harm. *Wash hands after handling.*

Made in China to ATD Tools, Inc. Specifications
Visit us at www.atdtools.com

Printed In China
ATD7406_rev_0417

SAFETY AND GENERAL INFORMATION

Save these instructions. For your safety, read and understand the information contained within. The owner and operator of this equipment shall have an understanding of this product and related safe operating procedures before attempting to use this product. Instructions and safety information shall be conveyed in the operator's native language before use of this product is authorized. If any doubt exists as to the safe and proper use of this product as outlined in this factory authorized manual, it should immediately be removed from service.

Inspect before each use. Do not use if broken, bent, cracked, or damaged parts (including labels) are noted. If the pallet jack has been, or is suspected of having been, subjected to a shock load (a load dropped suddenly and unexpectedly upon it), discontinue use until inspected by an authorized factory service

center. Qualified personnel should conduct an annual inspection and any missing or damaged parts, decals, warning/safety labels or signs should be replaced with factory-authorized replacement parts only. Any pallet jack that appears to be damaged in any way, is worn, or operates abnormally, shall be removed from service immediately.

PRODUCT DESCRIPTION

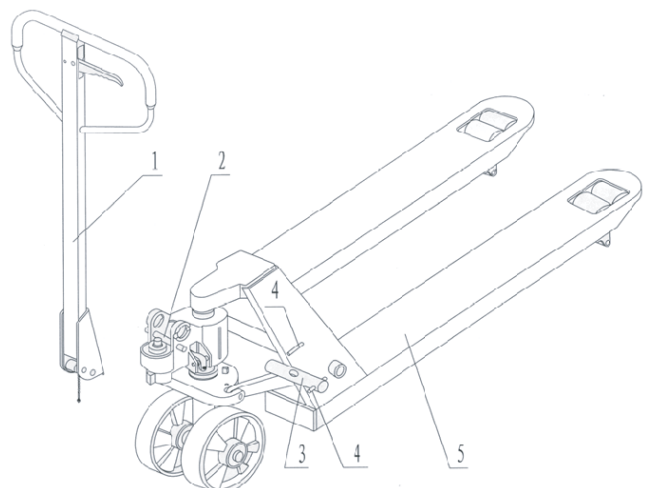
ATD Pallet Jacks are designed to safely support rated capacity loads. They are made of high-quality steel and designed for horizontal lifting and transporting loads using a pallet, or transporting standardized containers using a level, fixed base. For your safety and the correct operation of this product, please carefully read these instructions before using this pallet jack.

SPECIFICATIONS

Model	Capacity	Fork Size	Min.Height	Max. Height	Steering Arc	Weight
ATD-7406	5,500 lbs.	48" x 27"	3.375"	7.875"	210°	176 lbs.

PREPARATION

1. Before using this product, read the owner's manual and familiarize yourself thoroughly with the product and the hazards associated with using it improperly.
2. Inspect before each use. Do not use if there are bent, broken or cracked components. Ensure that all parts move freely.
3. Verify that the product and your application are compatible. If in doubt, contact Technical Service at (888) 332-6419.
4. Install draw-bar to pump unit. Use a hammer to insert the axle with hole into the hydraulic pump, see Figure 2
5. Place control handle (117 or 120G) in the 'LOWER' position, then pass the adjusting nut (104), adjusting bolt (103) and chain (102) through the hole of axle (105A) with your hand (See figure 3).
6. Press the draw-bar (110, 110B or 111G) down, remove the pin (#2) (see Figure 1).
7. Place the control handle (117 or 120G) in the "RAISE" position, then raise the lever plate (319) with the pin (#2) and insert the adjusting bolt (103) into the front slot of the lever plate (319) and con -



1. Draw-bar 2. Pin 3. Axle with hole 4. Elastic Pin 5. Fork.

Figure 1 - Typical Pallet Jack nomenclature.

tinue adjusting nut (104) on the underside of the lever plate.

8. Use a hammer to tap another elastic pin (106) into the axle with hole (105A). The draw-bar is now assembled to the pump.

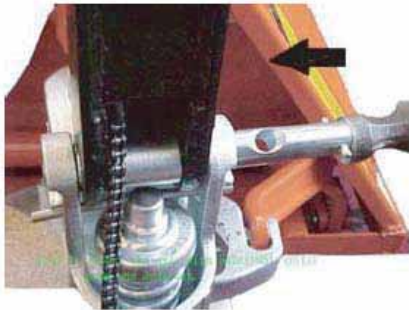


Fig. 2

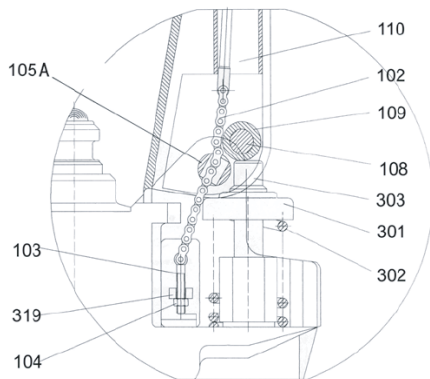


Figure 3.

OPERATION

TO ADJUST RELEASE DEVICE

On the draw-bar of this pallet truck, the control handle (117 or 120G) can be set to three positions:

Raise - handle down

Drive position - handle in center position

Lower - handle up, the lever moves back to drive position when released.

If however these have been changed, they can be adjusted as follows:

1. In the "DRIVE" position, if the forks are elevated when pumping, turn the adjusting nut (104) on the adjusting bolt (103) or screw (318) it clockwise until the pumping action does not result in the forks being raised and the three (3) "DRIVE" positions function properly.
2. If the forks descend while pumping in the "DRIVE" position, turn the nut (104) or screw (318) counter-clockwise until the forks are no longer being lowered.
3. If the forks do not descend when the control handle (117 or 120G) is in the "LOWER" position, turn the nut (104) or screw (318) clockwise until the control handle (117 or 120G) is raised and the forks are lowered. Then check the "DRIVE" position according to section 3.1 and 3.2 to verify that the nut (104) and screw (318) are properly positioned.
4. If the forks do not elevate while pumping in the "RAISE" position, turn the nut (104) or screw (318) counter-clockwise until the forks elevate while pumping in the "RAISE" position. Then check the "LOWER" and "DRIVE" positions according to sections 3.1, 3.2 and 3.3.

MAINTENANCE

The pallet truck is largely maintenance-free.

OIL

The oil level should be checked every six months. ISO VG32 hydraulic oil should be used. Oil viscosity should be 30 cSt at 400° C. Total volume is approximately 0.4 lt.

TO REMOVE AIR

Air can mix with the hydraulic oil during transportation or due to pump issues. This can result in fork malfunctions and forks that do not elevate while pumping in the "RAISE" position. To remove the air, place the control handle (117 or 120G) in the "LOWER" position and move the draw bar up and down several times.

DAILY CHECK AND MAINTENANCE

Inspecting the pallet truck daily can help extend its life cycle. Special attention should be paid to the wheels, axles, threads, etc. The wheels should be checked for any blockage. The forks should be unloaded and lowered to their lowest position when a job is complete.

LUBRICATION

At the factory, long-lasting grease is applied to all bearings and shafts. Long-lasting grease should be reapplied on a monthly basis and after each time the truck's lubrication points are cleaned.

GUIDE TO SAFETY OPERATION

1. Please read all warning notices and instructions in this document and on the pallet truck before using the vehicle.
2. Do not use on sloping ground.
3. Do not operate a pallet truck unless you are familiar with this machinery and have been trained or authorized to do so.
4. Do not operate a pallet truck unless you have personally inspected it. Pay special attention to the wheels or rollers, the draw-bar unit, the fork unit, the lever plate, etc.
5. When pulling the truck, always move the control handle into the drive position. This makes the draw-bar easier to move and depressurizes the hydraulic pump and also preserves the hydraulic seals and valve components. This will increase the truck's service life.
6. Do not accept passengers when driving the pallet truck.
7. Wear gloves for protection when handling goods.
8. When goods are being transported, all individuals should remain at least 2 feet (600 mm) from the truck.
9. Avoid loading goods as shown in Figure 5/B .
10. Do not exceed the truck's maximum recommended capacity.
11. Be sure to operate the truck safely at all times and under all conditions.

TROUBLESHOOTING

No.	Symptom	Possible Cause	Corrective Action
1	The forks cannot reach maximum height.	There is not enough hydraulic oil.	Add additional oil.
2	The forks will not lift.	<ul style="list-style-type: none"> - There is no hydraulic oil. - The oil has been contaminated. - The nut (104) is set too high, keeping the pump valve open. - Air has been mixed with the hydraulic oil. 	<ul style="list-style-type: none"> - Add additional oil. - Change the oil. - Adjust the nut (104) or screw (318) (see Section 3.4). - Remove the air (see Section 4.2).
3	The forks cannot be lowered.	<ul style="list-style-type: none"> - The piston rod (328) or pump (322) has been damaged due to partial loading that was incorrectly centered on the fork or the fork was over-loaded. - The fork was kept in an elevated position for an extended period while the piston rod was exposed; this resulted in the piston rusting or becoming jammed. - The adjusting nut (104) or screw (318) have not been correctly positioned. 	<ul style="list-style-type: none"> - Replace the piston rod (328) or the pump (322). - Maintain the fork in the lowest position when vehicle is not in use and be sure to sufficiently lubricate the piston rod. - Adjust the nut (104) and screw (318) (see Section 3.3).
4	Leaking	<ul style="list-style-type: none"> - Seals are worn or damaged. - Parts are cracked or broken. 	<ul style="list-style-type: none"> - Replace damaged seals. - Replace damaged parts.
5	The fork is lowered without the release valve being activated.	<ul style="list-style-type: none"> - Contaminants in the oil prevent the release valve from closing tightly. - Parts of the hydraulic system have been cracked or damaged. - Air has mixed with the hydraulic oil. - Seals have been worn or damaged. - The adjust nut (104) or screw (318) have not been correctly positioned. 	<ul style="list-style-type: none"> - Drain and replace the oil. - Inspect and replace any damaged parts. - Remove the air (see Section 4.2). - Replace worn or damaged seals. - Adjust the nut (104) or screw (318) (see Section 3.2).

Fig. 4

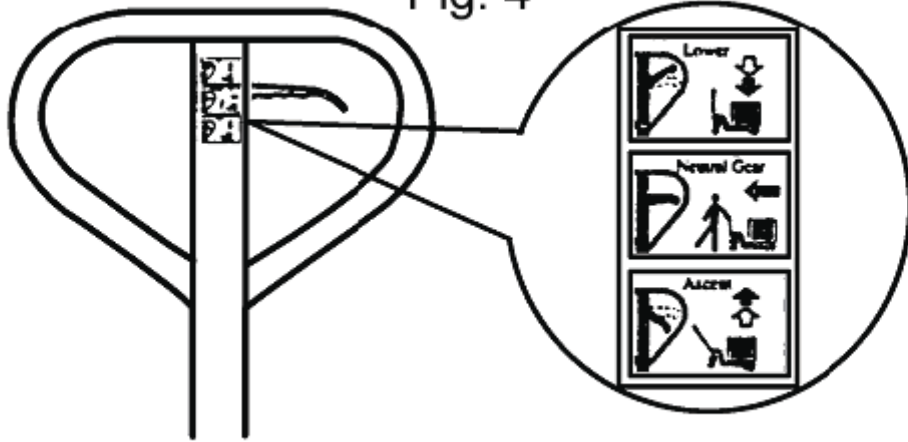
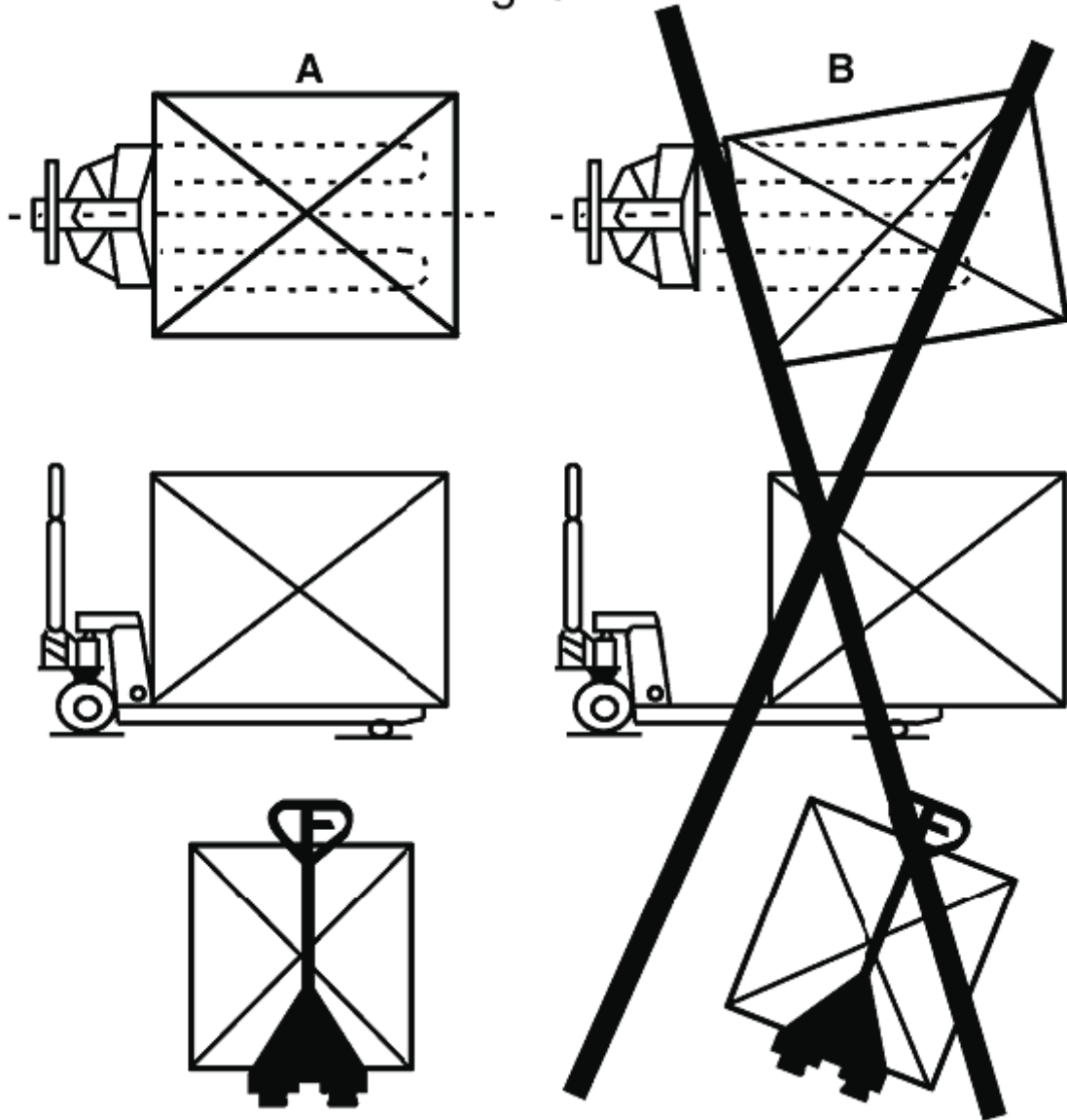


Fig. 5



REPLACEMENT PARTS

Not all components of the jack can be replaced. Please contact your distributor for parts. When ordering parts, please provide the model number, part number, and part description. Contact your distributor for current pricing.

ONE YEAR LIMITED WARRANTY

For a period of one (1) year from date of purchase, **ATD Tools, Inc.** will repair or replace, at its option, without charge, any of its products which fails due to a defect in material or workmanship, or which fails to conform to any implied warranty not excluded hereby.

Performance of any obligation under this warranty may be obtained by contacting your distributor or point of sale for further instructions. Please retain your proof of purchase, as it will be needed for any claim.

Except where such limitations and exclusions are specifically prohibited by applicable law, (1) the CONSUMER'S SOLE AND EXCLUSIVE REMEDY SHALL BE THE REPAIR OR REPLACEMENT OF DEFECTIVE PRODUCTS AS DESCRIBED ABOVE, and (2) **ATD Tools, Inc.** SHALL NOT BE LIABLE FOR ANY CONSEQUENTIAL OR INCIDENTAL DAMAGE OR LOSS WHATSOEVER, and (3) THE DURATION OF ANY AND ALL EXPRESSED AND IMPLIED WARRANTIES, INCLUDING WITHOUT LIMITATION, ANY WARRANTIES OF MERCHANTABILITY AND FITNESS FOR A PARTICULAR PURPOSE, IS LIMITED TO A PERIOD OF ONE (1) YEAR FROM DATE OF PURCHASE.

Some states do not allow limitations on how long an implied warranty lasts, so the above limitation may not apply to you. Some states do not allow the exclusion or limitation of incidental or consequential damages, so the above limitation or exclusion may not apply to you. This warranty gives you specific legal rights, and you may also have other rights which vary from state to state.



ATD Tools, Inc.
160 Enterprise Drive
Wentzville, MO 63385
www.atdtools.com



ATD Tools, Inc.
160 Enterprise Drive
Wentzville, MO 63385
www.atdtools.com



ATD Tools, Inc.
160 Enterprise Drive
Wentzville, MO 63385
www.atdtools.com