



## **ATD-7396B**

# **10-Ton Air/Hydraulic Long Chassis Service Jack**

### **Owner's Manual**



#### **Features:**

- Heavy-duty hydraulic performance for garages, equipment dealers, commercial service and more
- Welded hydraulic pump and cylinder construction provides increased strength and leak prevention
- Chrome plated ram for additional rust resistance
- Wiper seals protect hydraulic system from contaminants
- Controlled descend with speed limit to ensure safe operation
- Fast to load design allows the jack to reach maximum height in 5 pumps under no load
- Heavy-duty front wheels and swivel rear casters provide smooth maneuvering and positioning
- Overload and bypass safety valves prevent use beyond the rated capacity and over extension of the ram
- Handle can be locked into one of three positions from horizontal to vertical and has independent release lever
- Meets or exceeds ASME PASE-2019 standards

#### **Specifications:**

- Capacity: 10-Ton
- Min. Height: 6.25"
- Max. Height: 25.5"
- Handle Length: 42.63"
- Saddle Diameter: 5.13"
- Jack Size: 59.31" x 17.63" x 9.25"
- Shipping Weight: 301.8 lbs.

**NOTE:** BEFORE USING THIS JACK, PLEASE READ THIS MANUAL, UNDERSTAND ITS OPERATING PROCEDURES, SAFETY WARNINGS AND MAINTENANCE INSTRUCTIONS.

Carefully inspect all components for shipping damage. If shipping damage is found, notify carrier at once. The carrier is responsible for any damage resulting from shipment.

## SAFETY

To avoid personal injury or property damage, follow all safety precautions. We cannot be responsible for injury or damage resulting from unsafe and incorrect product use, system operation, or lack of maintenance. The following symbols are indicators of a situation that you need to pay close attention to.



**WARNING** - indicates a potential danger that requires correct action to avoid personal injury.



**IMPORTANT** - indicates correct action to prevent damage or equipment failure.



### WARNING:

- The hydraulic equipment operator must be a qualified operator with proper training and experience with hydraulic equipment. Lack of knowledge in any of these areas can lead to equipment damage or personal injury.
- Read, understand, and follow all instructions before operating this jack.
- Inspect the jack before each use. Do not use jack if damaged, altered, modified, leaking hydraulic fluid or with missing or loose components.
- To avoid personal injury, never modify or weld hydraulic equipment.
- Never lift more than the rated capacity of the jack, overloading causes equipment failure and possible personal injury.
- The jack is a load lifting device, not a load holding device. Once the load has been positioned, it must be supported mechanically. Never work under, or around a load solely supported by hydraulic means.
- Never put unbalanced or off-center loads on the jack saddle. Do not use saddle adapters or saddle extenders between the stock lifting saddle and the load. incorrect loading can result in equipment failure.
- Do not move or dolly the vehicle while on the jack.
- Always wear safety glasses and/or other protective equipment that meet or exceed ANSI Z87.1 and OSHA standards.
- Use the jack **ONLY** on hard, level surfaces capable of sustaining the load.



### IMPORTANT

- Keep the hydraulic jack clean at all time.
- When the hydraulic jack is not in use, release the valve and lower lift arm.
- Use hydraulic equipment in normal operating temperatures. Do not use equipment in temperatures of 150°F (65° C) or higher. Overheating will soften seals and weakens hose material, resulting in oil leaking or other equipment failure.

## DESCRIPTION

This hydraulic jack is designed for fleet truck shops, farm equipment dealers, bus company garages.

## SPECIFICATIONS

Capacity:	10-Ton
Lifting Range:	6.25" - 25.5"
Handle Length:	42.63"
Saddle Diameter:	5.13"
Jack Size:	59.31" x 17.63" x 9.25"
Shipping Weight:	301.8 lbs.
Air Pressure:	110-120 psi

## SETUP

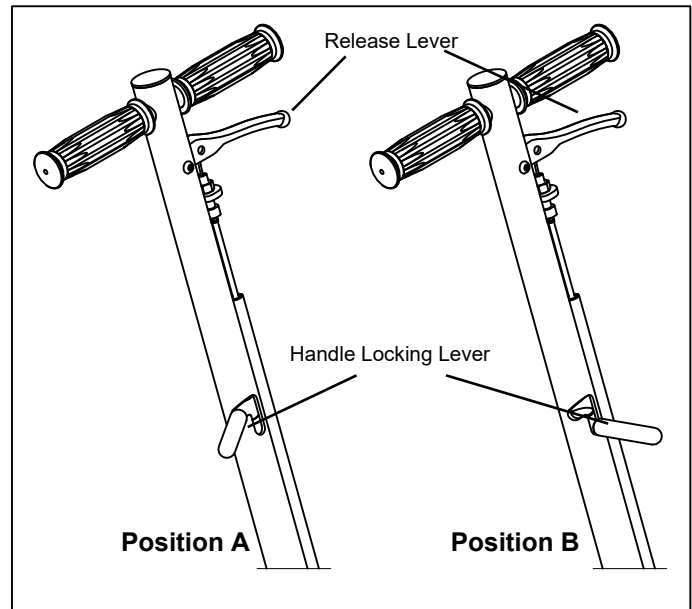
PLEASE REFER TO THE EXPLODED VIEW DRAWING IN THIS MANUAL TO IDENTIFY PARTS.

1. Take the jack out of the wooden crate and remove the cover carton from the handle.
2. Pull the handle's locking lever into position so it is disengaged (position A).
3. Press down on the handle fork and remove the retaining hook to free the fork.
4. Install the handle in the handle fork making sure the T-portion of the handle is positioned left and right of the jack's chassis.
5. Secure the handle in the handle fork by tightening the screw and nut with an Allen wrench and adjustable wrench.
6. Remove the protective carton from the jack and engage the handle's locking lever so the handle locks in any one of the three lock positions (Position B).
7. In order to activate the pump handle, disengage the handle locking lever (Position A) and proceed to pump.

## BLEEDING AIR

**Before Use:** Air may accumulate within a jack during shipment or after prolonged use. This air can cause the jack to respond slowly or not work. Use the instructions below to bleed the air from the jack:

- A. Raise the cover plate by pulling up on its forward edge, so the Phillips head fill screw on the top of the reservoir is shown.
- B. Using a Phillips head screwdriver, turn the screw counterclockwise two full turns so the gasket under the screw head is not sealing.
- C. Pull up on the release lever while simultaneously pumping the jack about 4 or 5 full incremental pump strokes.
- D. Let go of the release lever and proceed to pump the jack until the lift arm is at maximum height.
- E. If the condition seems better but not complete, repeat steps b. through c. until all air is purged from the jack's hydraulic system.



- F. Turn the Phillips head screw clockwise until tight, and rotate the cover plate back to its closed position.

## OPERATING INSTRUCTIONS (Refer to illustrations above)

Handle Locking Lever in Position A: Allows you to pump the jack using the handle.

Handle Locking Lever in Position B: Locks the handle in place, in three different positions.

## RAISING JACK

- Connect the shop air supply to the jack. (Shop air should be clean, dry, and regulated 110-120 psi.)
- Disengage the handle locking lever (position A).
- Place jack directly under vehicle using the manufacturer's recommended lifting points on the chassis. The wheels of the vehicle must be in the straight-ahead position, with the emergency brake released. Make sure that the saddle supports weight firmly and evenly. Check positioning under **SLIGHT** load to confirm that the jack or load will not slip.
- Raise jack by operating the air valve or pumping handle until desired height is reached. After lifting, secure load with approved jack stands that meet proper weight requirements. **DO NOT** use jack as the only means of support.

## LOWERING JACK

- Pull up the release lever. Slow descending will be activated with load on it. Speed of descent is automatically controlled by the internal valve.

## MAINTENANCE

**IMPORTANT:** Dirt is the greatest single cause of failure in hydraulic units.

Keep the service jack clean and well lubricated to prevent foreign matter from entering the system. If the jack has been exposed to rain, snow sand or grit, it must be cleaned before it is used.

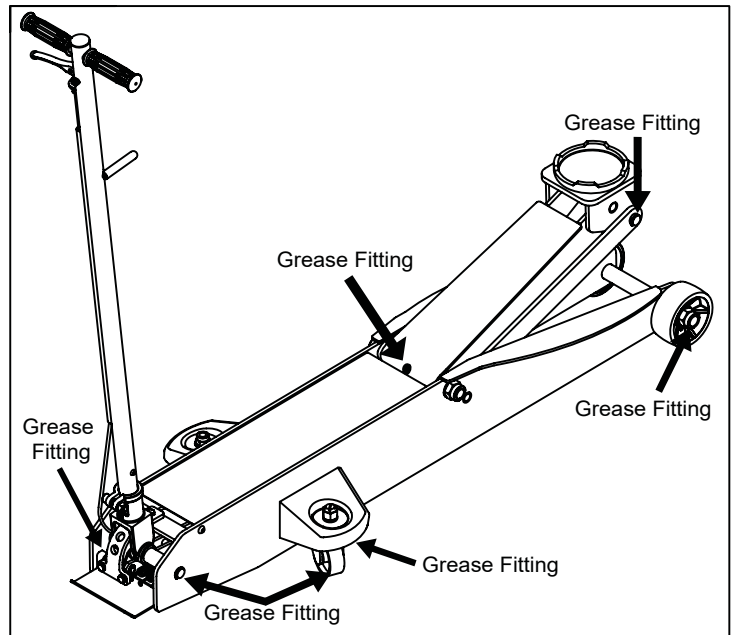
- Store the jack in a well-protected area where it will not be exposed to corrosive vapors, abrasive dust, or any other harmful elements.
- Refer to the illustration, and regularly (at least once per month) lubricate the moving parts shown.
- Add grease to upper arm grease fitting (shown below) every three months.
- If necessary, add approved anti-wear hydraulic jack oil.

**! IMPORTANT:** The use of alcohol, hydraulic brake fluid, detergent motor oil, or transmission oil could damage the seals and result in jack failure.

- Inspect the jack before each use. Take corrective action if any of the following problems are found:

- a. Cracked or damaged housing
- b. Excessive wear, bending, or other damage
- c. Leaking hydraulic fluid
- d. Scored or damaged piston rod
- e. Loose hardware
- f. Modified or altered equipment

**! IMPORTANT:** DO NOT adjust the safety valve screw assembly.



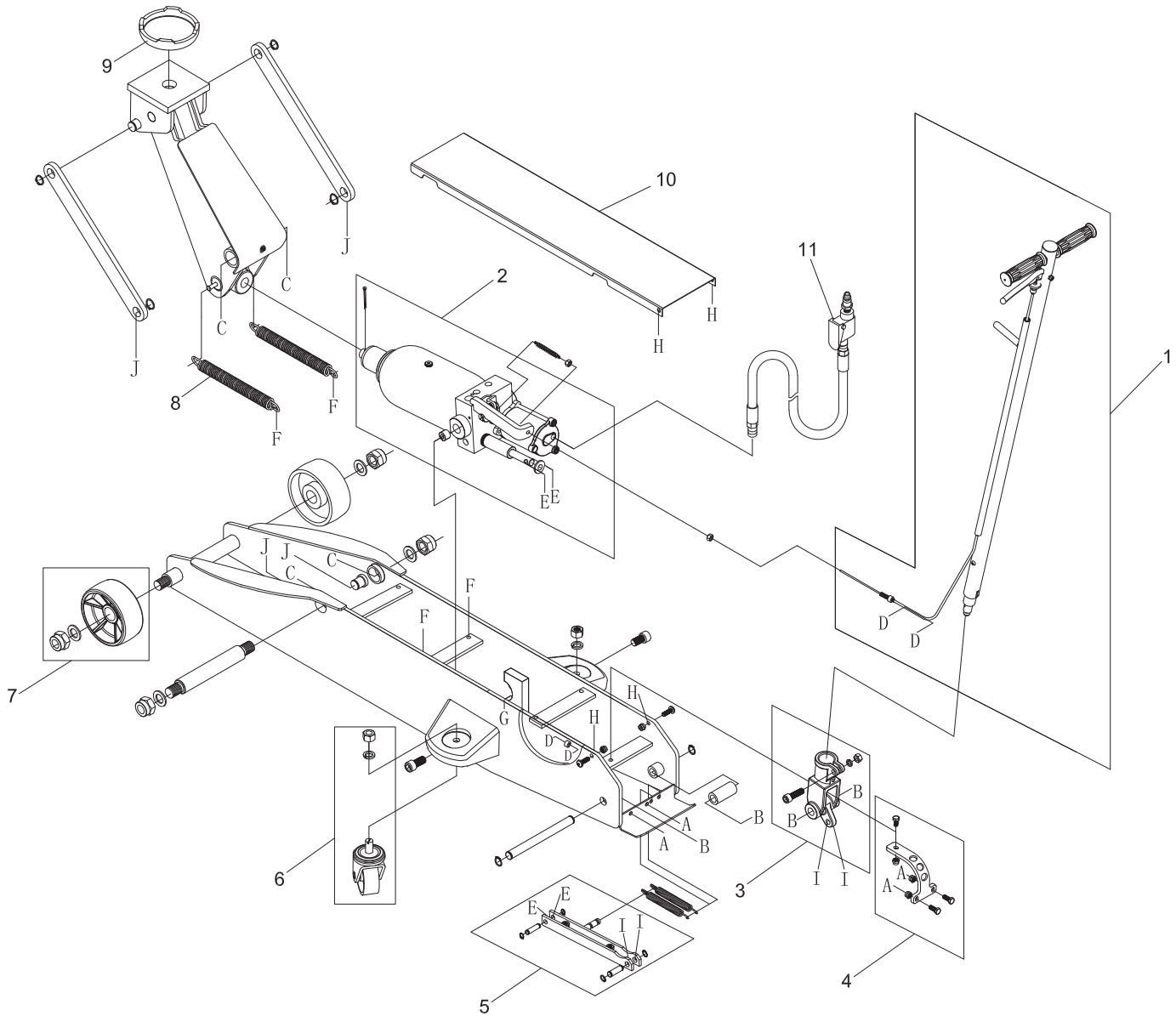
## TROUBLESHOOTING

Repair procedures must be performed in a dirt-free environment by qualified personnel who are familiar with this equipment.

SYMPTOM	POSSIBLE CAUSE	SOLUTION
Jack does not lift	1. Release valve is open.	1. Close release valve.
	2. Low/no oil in reservoir.	2. Fill with oil and bleed system.
	3. Air-locked system.	3. Bleed system.
	4. Load is above capacity of jack.	4. Use correct equipment.
	5. Delivery valve and/or bypass valve not working correctly.	5. Clean to remove dirt or foreign matter.
	6. Packing worn out or defective.	6. Install seal kit
Jack lifts only partially	1. Too much or not enough oil.	1. Check Oil level
Jack advances slowly	1. Pump not working correctly.	1. Install seal kit, or replace power unit.
Jack lifts load, but doesn't hold	1. Cylinder packing is leaking.	1. Install seal kit
	2. Valve not working correctly (suction, delivery, release, or bypass).	2. Inspect valves. Clean and repair seat surfaces.
	3. Air-locked system.	3. Bleed system.
Jack leaks oil	1. Worn or damaged seals.	1. Install seal kit.
Jack will not retract	1. Release valve is closed.	1. Open or clean release valve.

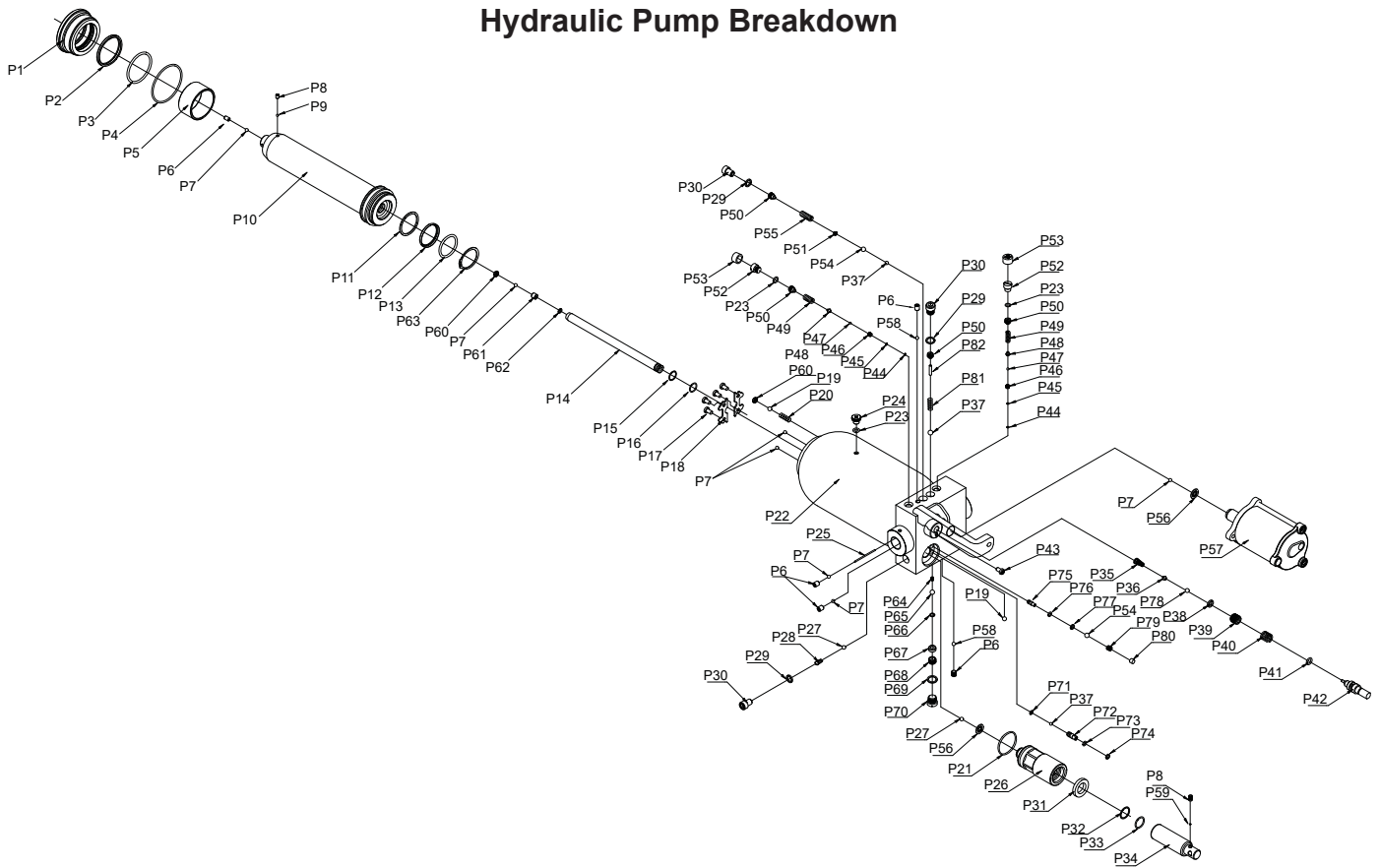
## REPLACEMENT PARTS

Not all components of this product are replacement items, but are illustrated as a convenient reference for position in the assembly sequence. When ordering parts, give model number, part number and description. Call your distributor for current pricing:



ITEM#	ORDERING PART#	PART DESCRIPTION	QTY
1	PRT7396B-01	HANDLE ASSEMBLY	1
2	PRT7396B-02	PUMP ASSEMBLY	1
3	PRT7391B-03	HANDLE FORK AND HARDWARE	1
4	PRT7391B-04	LOCKING PLATE AND HARDWARE	1
5	PRT7391B-05	PUMP LINKAGE AND HARDWARE	1
6	PRT7391B-06	CASTER ASSEMBLY AND HARDWARE	2
7	PRT7391B-07	FRONT WHEEL AND HARDWARE	2
8	PRT7391B-08	RAM RETRACTION SPRING	2
9	PRT7391B-09	SADDLE	1
10	PRT7391B-10	COVER PLATE	1
11	PRT7396B-11	AIR HOSE AND VALVE ASSEMBLY	1
N/S	PRT7391B-SK	SEAL KIT	1

## Hydraulic Pump Breakdown



ITEM#	ORDERING PART#	DESCRIPTION	QTY
P1	-	LIMIT RING	1
P2	PRT7396B-SK	DUST RING	1
P3	PRT7396B-SK	O-RING	1
P4	PRT7396B-SK	O-RING	1
P5	-	LIMIT RING	1
P6	-	SCREW	5
P7	-	STEEL BALL	7
P8	-	SCREW	2
P9	-	STEEL BALL	1
P10	-	PISTON ROD	1
P11	PRT7396B-SK	NYLON RING	1
P12	PRT7396B-SK	WASHER	1
P13	PRT7396B-SK	O-RING	1
P14	-	SMALL PISTON ROD	1
P15	PRT7396B-SK	PTFE WASHER	1
P16	PRT7396B-SK	O-RING	1
P17	-	SCREW	4
P18	-	LIMIT PLATE	2
P19	-	STEEL BALL	2
P20	-	SPRING	1
P21	PRT7396B-SK	O-RING	1
P22	-	PUMP	1
P23	PRT7396B-SK	O-RING	3
P24	PRT7396B-SK	OIL FILLER SCREW	1
P25	-	PIN	1
P26	-	PUMP CORE 1	1
P27	-	STEEL BALL	2
P28	-	SPRING	1

ITEM#	ORDERING PART#	DESCRIPTION	QTY
P29	PRT7396B-SK	WASHER	3
P30	-	SCREW	3
P31	PRT7396B-SK	U-RING	1
P32	PRT7396B-SK	PTFE WASHER	1
P33	PRT7396B-SK	O-RING	1
P34	-	PUMP CORE	1
P35	-	SPRING	1
P36	-	STEEL BALL SEAT	1
P37	-	STEEL BALL	3
P38	PRT7396B-SK	COPPER WASHER	1
P39	-	VALVE SEAT	1
P40	-	SPRING	1
P41	PRT7396B-SK	O-RING	1
P42	-	RELEASE VALVE CORE	1
P43	-	SCREW	1
P44	PRT7396B-SK	COPPER WASHER	2
P45	PRT7396B-SK	WASHER	2
P46	-	SCREW	2
P47	-	STEEL BALL	2
P48	-	STEEL BALL SEAT	2
P49	-	SPRING	2
P50	-	SCREW	4
P51	-	STEEL BALL SEAT	1
P52	-	SCREW	2
P53	-	DUST CAP	2
P54	-	STEEL BALL	2
P55	-	SPRING	1

ITEM#	ORDERING PART#	DESCRIPTION	QTY
P56	PRT7396B-SK	COPPER WASHER	2
P57	-	AIR MOTOR	1
P58	-	STEEL BALL	2
P59	-	STEEL BALL	1
P60	-	SCREW	2
P61	-	VALVE SEAT	1
P62	PRT7396B-SK	NYLON WASHER	1
P63	PRT7396B-SK	RETAINING RING	1
P64	-	SCREW	1
P65	-	STEEL BALL	1
P66	PRT7396B-SK	COPPER WASHER	1
P67	PRT7396B-SK	WASHER	1
P68	-	SCREW	1
P69	-	NYLON WASHER	1
P70	-	SCREW	1
P71	PRT7396B-SK	WASHER	1
P72	-	VALVE SEAT	1
P73	PRT7396B-SK	O-RING	1
P74	PRT7396B-SK	PTFE WASHER	1
P75	-	PUSH ROD	1
P76	PRT7396B-SK	O-RING	1
P77	PRT7396B-SK	NYLON WASHER	1
P78	-	STEEL BALL	1
P79	-	SPRING	1
P80	-	LIMIT ROD	1
P81	-	SPRING	1
P82	-	ROD	1



**THIS WARRANTY AND CONFIRMED RECEIPT(S) SHOULD BE RETAINED BY THE CUSTOMER AT ALL TIMES**

PURCHASED FROM: \_\_\_\_\_

DATE PURCHASED: \_\_\_\_\_

INVOICE/RECEIPT NUMBER: \_\_\_\_\_

Your ATD-7396B is warranted for a period of 12 months from the original purchase date.

For a period of one (1) year from your purchase date, ATD Tools, Inc. will repair or replace (at its option) without charge, your ATD product if it was purchased new and the product has failed due to a defect in material or workmanship which you experienced during normal use of the product. This limited warranty is your exclusive remedy.

To access the benefits of this warranty, contact your supplier, or point of sale directly. You may be advised to return the product under warranty, freight prepaid, to your supplier for warranty determination.

If this ATD product is altered, abused, misused, modified, or undergoes service by an unauthorized technician, your warranty will be void. We are not responsible for damage to ornamental designs you place on this ATD product and such ornamentation should not cover any warnings or instructions or they may void the warranty. This warranty does not cover scratches, superficial dents, and other abrasions to the paint finish that occur under normal use. It also does not cover normal wear items such as but not limited to brushes, batteries, drill bits, drill chucks, pads or blades.

Subject to the law in your state:

- (1) Your sole and exclusive remedy is repair or replacement of the defective product as described above.
- (2) ATD is not liable for any incidental damages, including but not limited to, lost profits and unforeseeable consequences.
- (3) The repair and replacement of this product under the express limited warranty described above is your exclusive remedy and is provided in lieu of all other warranties, express or implied. All other warranties, including implied warranties and warranties of merchantability or fitness for a particular purpose are disclaimed and, if disclaimer is prohibited, these warranties are limited to one year from your date of purchase of this product.

Some states' laws do not allow limited durations on certain implied warranties and some states' laws do not allow limitations on incidental or consequential damages. You should consult the law in your state to determine how your rights may vary.

[Affix receipt or invoice here for safe keeping]