



ATD-7356 20/40-Ton 2-Stage Truck Jack Owner's Manual



Features:

- Air and hydraulic performance for heavy-duty trucking, agricultural and fleet applications
- Two-stage telescopic jack will lift 40 tons with the first, and 20 tons with the second stage cylinder
- Provides quick and effortless lifting
- Quick lift without load
- Self-retracting
- Polished chrome plated ram for long service life
- Large rubber wheels for greater maneuverability
- 47" T-handle assists in positioning jack under vehicle
- (3) adapters included

Specifications:

- Capacity (Ton): 20/40
- Minimum Height: 5.90"
- Maximum Height: 11.60"
- Stages: 9" / 11.60"
- Adapters: .4", 1.375", 2.5"
- Air Pressure: 100-145 psi
- Jack Size: 21.5" x 11.5"
- Handle Length: 47.25"

NOTE: BEFORE USING THIS JACK, PLEASE READ THIS MANUAL, UNDERSTAND ITS OPERATING PROCEDURES, SAFETY WARNINGS AND MAINTENANCE OF THIS JACK

Carefully inspect all components for shipping damage. If shipping damage is found, notify carrier at once. The carrier is responsible for any damage resulting from shipment.

SAFETY



To avoid personal injury or property damage, please follow all safety precautions. We cannot be responsible for injury or damage resulting from unsafe and incorrect products use or system operation, or lack of maintenance.

WARNING indicates a potential danger that requires correct action to avoid personal injury.

IMPORTANT indicates correct action to prevent damage or equipment failure.

WARNING

- The hydraulic equipment operator must be qualified and familiar with correct training and work experience of hydraulic equipment. Lack of knowledge in any of these areas can lead to equipment damage or personal injury.
 - Read, understand, and follow all instructions before operating this jack.
 - Inspect the jack before each use. Do not use jack if damaged, altered, modified, leaking hydraulic fluid or with missing or loose components.
 - To avoid personal injury, never modify or weld hydraulic equipment.
 - Never lift more than the rated capacity of the jack, overloading causes equipment failure and possible personal injury.
 - The jack is a load lifting device, not a load holding device. Once the load has been positioned, it must be supported mechanically. Never work under, or around a load solely supported by hydraulic means.
 - Never put unbalanced or off-center loads on the jack saddle. Do not use saddle adapters or saddle extenders between the stock lifting saddle and the load. Incorrect loading can result in equipment failure.
 - Do not move or dolly the vehicle while on the jack.
 - Always wear safety glasses and/or other protective equipment that meet or exceed ANSI Z87.1 and OSHA standards.
 - Use the jack **ONLY** on hard, level surfaces capable of sustaining the load.
-

IMPORTANT

- Keep the hydraulic jack clean at all times.
- When the hydraulic jack is not in use, release the valve and disconnect the air hose.
- Use hydraulic equipment in normal operating temperatures. Do not use equipment in temperatures of 65°C (150°F) or higher. Overheating will soften seals and weaken hose material, resulting in oil leaking or other equipment failure.

INSPECTION

Prior to each use, visually inspect for leaking hydraulic oil, damaged, loose or missing parts. If jack is worn or damaged remove from service and contact your nearest service center for repair.

SETUP

1. Remove the jack and handle from the package.
2. Unscrew the wheels from the jack, and assemble the handle fork between the wheels and jack body with bolts and washers.
3. Connect the red air hose in the handle to the hose coupler with red hose end, and the blue one to the coupler with blue end.
4. Open the ball valve (Part #23) by turning the knob counter-clockwise.

OPERATION

1. Verify the control level is in the neutral position.
2. Install an air filter/lubricator in the shop air line, because water in the air line will damage the jack. Connect shop air supply to the jack. Recommended air pressure is 100-145 psi (7-10 bar).
3. Move the control lever to UP to raise the saddle to the contact point, then move the control level to neutral position.
4. Check the placement of the jack. The load must be centered on the jack saddle. Avoid jack wheel obstructions such as gravel, tools, or uneven expansion joints.
5. Move the control lever to UP to finish lifting the vehicle.
6. Immediately place approved support stands under the vehicle's lifting points (recommended by the vehicle manufacturer). **SLOWLY** and **CAREFULLY** lower the vehicle onto the support stands by moving the control lever to the DOWN position.

BLEEDING AIR FROM THE JACK

Air can accumulate within a hydraulic system during shipment or after prolonged use. This entrapped air causes the jack to respond slowly or feel “spongy”. To remove the air:

1. Move the control lever to DOWN position, and hold it there for a few seconds.
2. Move the control lever to UP position to complete the load-free lifting cycle.
3. Move the control lever to DOWN position to retract the jack pistons. The pistons should react in a smooth motion. If not, repeat steps 1-3.

MAINTENANCE

IMPORTANT: The greatest single cause of failure in hydraulic units is dirt. Keep the service jack clean and well lubricated to prevent foreign matter from entering the system. If the jack has been exposed to rain, snow, sand, or grit, it must be cleaned before it is used.

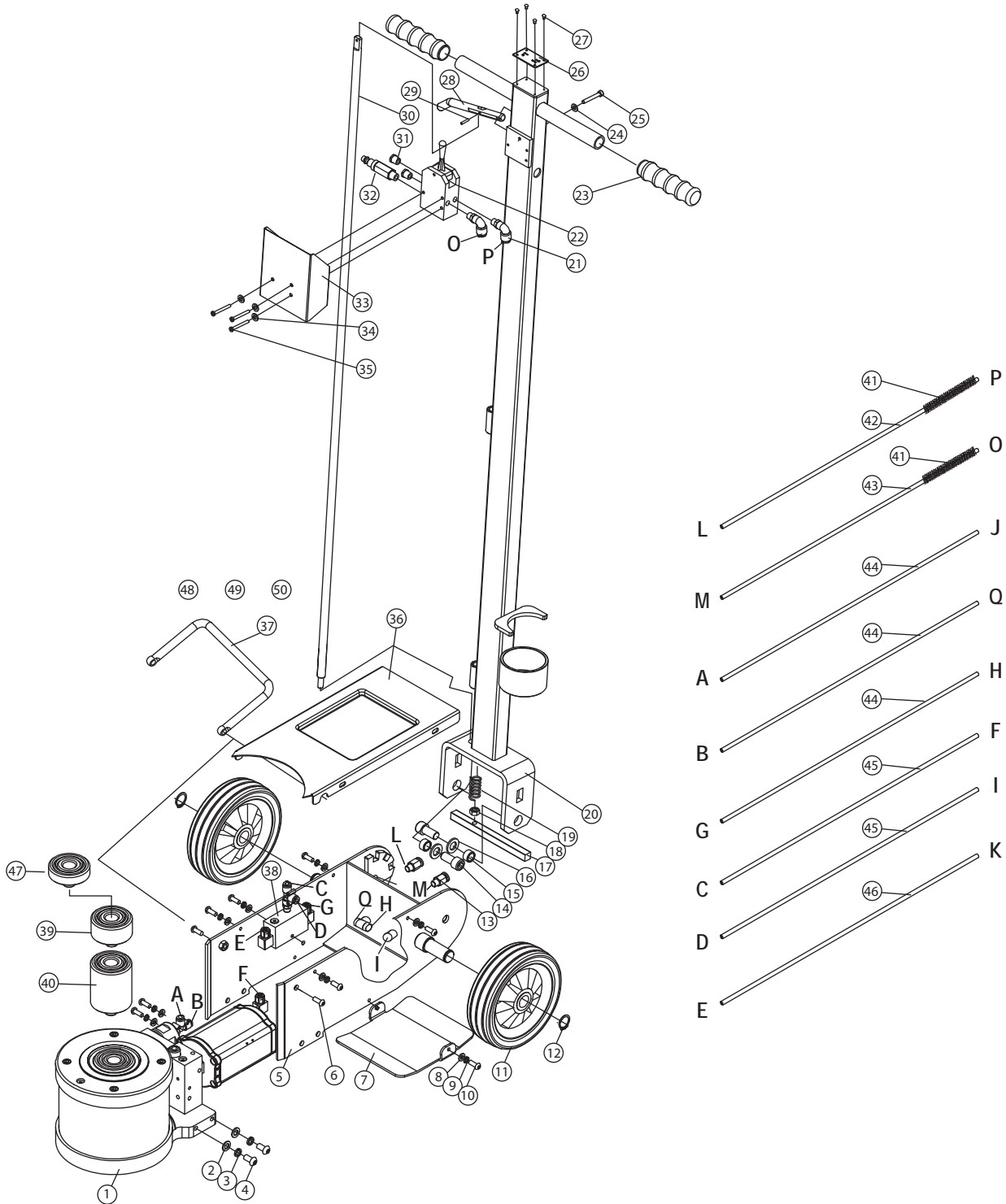
1. Store the jack with pistons completely retracted, in a well-protected area where it will not be exposed to corrosive vapors, abrasive dust, or any other harmful elements.
2. Use only replacement parts that are approved by the manufacturer. Disconnect the air supply before performing any maintenance operation.
3. Regularly lubricate the moving parts in the wheels, arm, and handle using a high quality grease.
4. Inspect the jack before each use. Take corrective action if any of the following problems are found:
 - a. Cracked, damaged housing
 - b. Excessive wear, bending, other damage
 - c. Leaking hydraulic fluid
 - d. Scored, damaged piston rod
 - e. Loose hardware
 - f. Modified equipment
5. Keep warning labels and instructional decals clean and readable. Use a mild soap solution to wash external surfaces of the jack.

TROUBLE SHOOTING

Trouble	Cause	Solution
Jack does not lift	1. Control valve in wrong position.	1. Move control valve to UP position.
	2. Low/no oil in reservoir.	2. Fill with oil and bleed system.
	3. Load is above capacity of jack.	3. Use correct equipment.
	4. Delivery valve and/or bypass valve not working correctly.	4. Clean to remove dirt or foreign matter. Replace oil.
	5. Seals worn out or defective.	5. 1. Replace hydraulic unit
Jack lifts only partially.	1. Too much or not enough oil.	1. Check oil level.
Jack advances slowly	1. Pump not working correctly	1. Replace hydraulic unit
	2. Leaking seals.	2. Replace hydraulic unit
	3. Air pressure of pump not working normally.	3. Check the pump pressure in the rated range (7 to 10 bars)
Jack lifts load, but doesn't hold	1. Cylinder packing is leaking.	1. Replace hydraulic unit
	2. Valve not working correctly (suction, delivery, release, bypass).	2. Inspect valves. Clean and repair seat surfaces.
Jack leaks oil	1. Worn or damaged seals.	1. Replace hydraulic unit
Jack will not retract	1. Control valve in wrong position	1. Move control valve to DOWN position.
Jack retracts slowly	1. Cylinder damaged internally	1. Send jack to hydraulic service center.
	2. Air pressure of pump not working normally.	2. Check the pump pressure in the rated range (7 to 10 bars).

REPLACEMENT PARTS

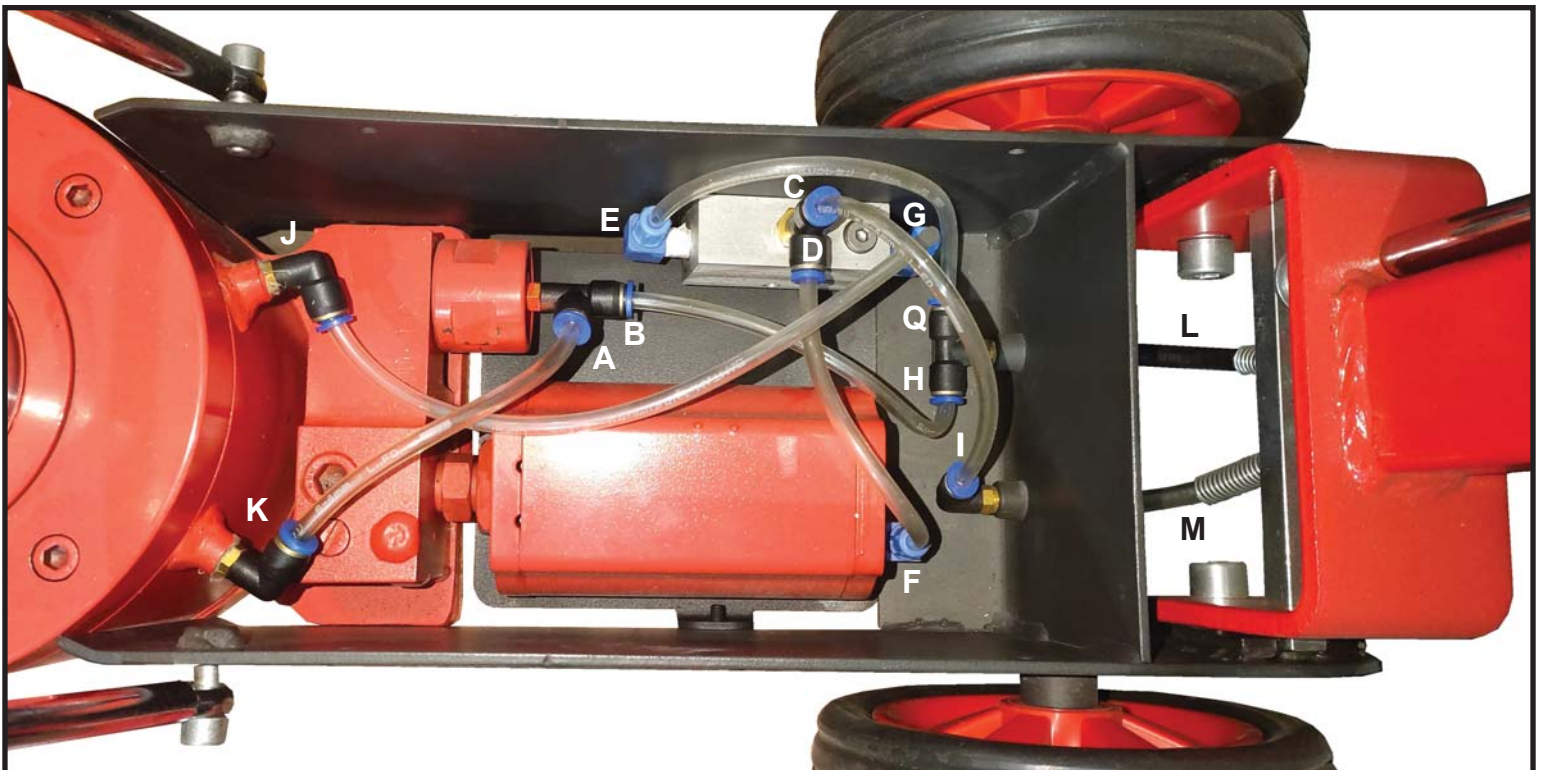
Not all components of this product are replacement items, but are illustrated as a convenient reference for position in the assembly sequence. When ordering parts, give model number, part number and description. Call your distributor for current pricing:



ITEM#	ORDERING PART#	PART DESCRIPTION	QTY
1	PRT7356-01	POWER UNIT ASSEMBLY	1
2	PRT7356-02	WASHER, M8	4
3	PRT7356-03-43	WASHER, M8	4
4	PRT7356-04	M8X16 SCREW	4
5	PRT7356-05	FRAME ASSEMBLY	1
6	PRT7356-06	SCREW	2
7	PRT7356-07	BED	1
8	PRT7356-08	WASHER, M6	7
9	PRT7356-09	WASHER, M6	7
10	PRT7356-10	M6X16 SCREW	7
11	PRT7356-11-12	WHEEL	2
12	PRT7356-11-12	WASHER, M20	2
13	PRT7356-13	FITTING	2
14	PRT7356-14	SCREW, M12x20	2
15	PRT7356-15	BUSHING	2
16	PRT7356-16	POSITIONING PIN	2
17	PRT7356-03-43	WASHER, M8	1
18	PRT7356-03-43	PRESS SPRING	1
19	PRT7356-03-43	HANDLE ASSEMBLY	1
20	PRT7356-03-43	90° ANGLE FITTING	2
21	PRT7356-03-43	CONTROL VALVE	1
22	PRT7356-03-43	SLEEVE	2
23	PRT7356-03-43	WASHER, 5MM	1

ITEM#	ORDERING PART#	PART DESCRIPTION	QTY
25	PRT7356-03-43	SCREW, M5x35	1
26	PRT7356-03-43	ESCUTCHEON	1
27	PRT7356-03-43	RIVET, 2x5	1
28	PRT7356-03-43	HANDLE	1
29	PRT7356-29	PIN, 5x12	1
30	PRT7356-03-43	HANDLE ADJUSTMENT ROD	1
31	PRT7356-03-43	MUFFLER	2
32	PRT7356-32	INLET CONNECTION	1
33	PRT7356-03-43	COVER	1
34	PRT7356-03-43	WASHER, 4MM	3
35	PRT7356-03-43	M4X35 SCREW	3
36	PRT7356-36	COVER PLATE	1
37	PRT7356-37	CARRY HANDLE	1
38	PRT7356-38	AIR VALVE ASSEMBLY	1
39	PRT7356-39	SADDLE A	1
40	PRT7356-40	SADDLE B	1
41	PRT7356-41	SPRING	2
42	PRT7356-42	AIR PIPE B 1300 (INCLUDED IN HANDLE ASSY)	1
43	PRT7356-43	AIR PIPE A 1350 (INCLUDED IN HANDLE ASSY)	1
44	PRT7356-44	AIR PIPE 210	3
45	PRT7356-45	AIR PIPE 250	1
46	PRT7356-46	AIR PIPE 150	1
47	PRT7356-47	SADDLE C	1

AIR HOSE ROUTING





THIS WARRANTY AND CONFIRMED RECEIPT(S) SHOULD BE RETAINED BY THE CUSTOMER AT ALL TIMES

PURCHASED FROM: _____

DATE PURCHASED: _____

INVOICE/RECEIPT NUMBER: _____

Your ATD-7356 is warranted for a period of 12 months from the original purchase date.

For a period of one (1) year from your purchase date, ATD Tools, Inc. will repair or replace (at its option) without charge, your ATD product if it was purchased new and the product has failed due to a defect in material or workmanship which you experienced during normal use of the product. This limited warranty is your exclusive remedy.

To access the benefits of this warranty, contact your supplier, or point of sale directly. You may be advised to return the product under warranty, freight prepaid, to your supplier for warranty determination.

If this ATD product is altered, abused, misused, modified, or undergoes service by an unauthorized technician, your warranty will be void. We are not responsible for damage to ornamental designs you place on this ATD product and such ornamentation should not cover any warnings or instructions or they may void the warranty. This warranty does not cover scratches, superficial dents, and other abrasions to the paint finish that occur under normal use. It also does not cover normal wear items such as but not limited to brushes, batteries, drill bits, drill chucks, pads or blades.

Subject to the law in your state:

- (1) Your sole and exclusive remedy is repair or replacement of the defective product as described above.
- (2) ATD is not liable for any incidental damages, including but not limited to, lost profits and unforeseeable consequences.
- (3) The repair and replacement of this product under the express limited warranty described above is your exclusive remedy and is provided in lieu of all other warranties, express or implied. All other warranties, including implied warranties and warranties of merchantability or fitness for a particular purpose are disclaimed and, if disclaimer is prohibited, these warranties are limited to one year from your date of purchase of this product.

Some states' laws do not allow limited durations on certain implied warranties and some states' laws do not allow limitations on incidental or consequential damages. You should consult the law in your state to determine how your rights may vary.

[Affix receipt or invoice here for safe keeping]