



# ATD-7350A 10-Ton Air Jack/Support Stand Owner's Manual



## Features:

- Ideal for heavy-duty lifting applications
- Completely air operated for fast and easy operation
- Doubles as a support stand
- Extension tube and detent pins provide several hold positions at multiple lifting heights
- Removeable T-handle and 10 ft. air hose for easy positioning and safety
- Meets or exceeds ASME/PASE 2014 standards

## Specifications:

- Capacity (Ton): 10
- Minimum Height: 17-1/2"
- Maximum Height: 51-1/8"
- Power Raise: 11-1/2"
- Base Diameter: 13-3/8"
- Rated Air Pressure Capacity: 200 psi
- Weight: 199.1 lbs. GW / 173.8 lbs. NW



*This is the safety alert symbol. It is used to alert you to potential personal injury hazards. Obey all safety messages that follow this symbol to avoid possible injury or death.*

## **WARNING**

- Study, understand and follow all instructions before operating this device.
- If the owner and/or operator are not fluent in English, the product warnings and instructions should be read and discussed with the operators' native language by the purchaser/owner or his designee. Make sure that the operator comprehends its contents.
- Do not exceed rated capacity.
- Use only on hard, level surfaces.
- Do not move or dolly loads with this device.
- Lift only on areas of the vehicle as specified by the vehicle manufacturer.
- No alterations shall be made to this product.
- Failure to heed these warnings may result in personal injury and/or property damage.

## **SAFETY AND GENERAL INFORMATION**

**Save these instructions.** For your safety *read, understand, and follow* the information provided with and on this jack. The owner and operator of this equipment should have an understanding of this jack and safe operating procedures before attempting to use. The owner and operator should be aware that use and repair of this product may require special skills and knowledge. Instructions and safety information should be conveyed in the operator's native language before use of this jack is authorized. If any doubt exists as to the safe and proper use of this jack, remove from service immediately.

**Inspect before each use.** Do not use if broken, bent, cracked, or damaged parts (including labels) are noted. Any jack that appears damaged in any way, operates abnormally or is missing parts, shall be removed from service immediately and the manufacturer notified. If you suspect that the jack was subjected to a shock load (a load dropped suddenly, unexpectedly upon it), immediately discontinue use until the jack has been checked by a factory authorized service center (contact distributor or manufacturer for list of Authorized Service Centers). It is recommended that an annual inspection be done by qualified personnel. Replace worn or damaged parts with factory authorized replacement Parts only. Labels and owner's manuals are available from manufacturer.

## **PRODUCT DESCRIPTION**

The ATD Tools 10-Ton Air Jack/Support Stand is designed to lift and support rated capacity loads. **Intended use:** To lift one wheel or one axle of a vehicle for the purpose of service and/or repair of vehicle components. Use this jack in pairs when lifting an entire end of a vehicle. Check with vehicle owner's manual for proper lift points. Use one pair per vehicle.

**WARNING:** *Rated capacity of this device is a reference to the working load this stand is capable of sustaining. Rated capacity is not increased when jacks are used in multiples.*

**WARNING:** *Do not use for any purpose other than those uses outlined in this manual. **DO NOT** use jack around corrosive materials such as chlorides - commonly used by road crews to melt snow and ice. Water and slush from vehicles exposed to chlorides may enter jack cylinder, severely and permanently damaging interior of cylinder and causing air leaks which adversely affect lifting performance.*

## **SPECIFICATIONS**

Model	Capacity	Starting Height	Max. Lift Height	Rated Capacity Air Pressure
ATD-7350A	10 Ton	17-1/2" to 40"	51-1/8"	200 psi

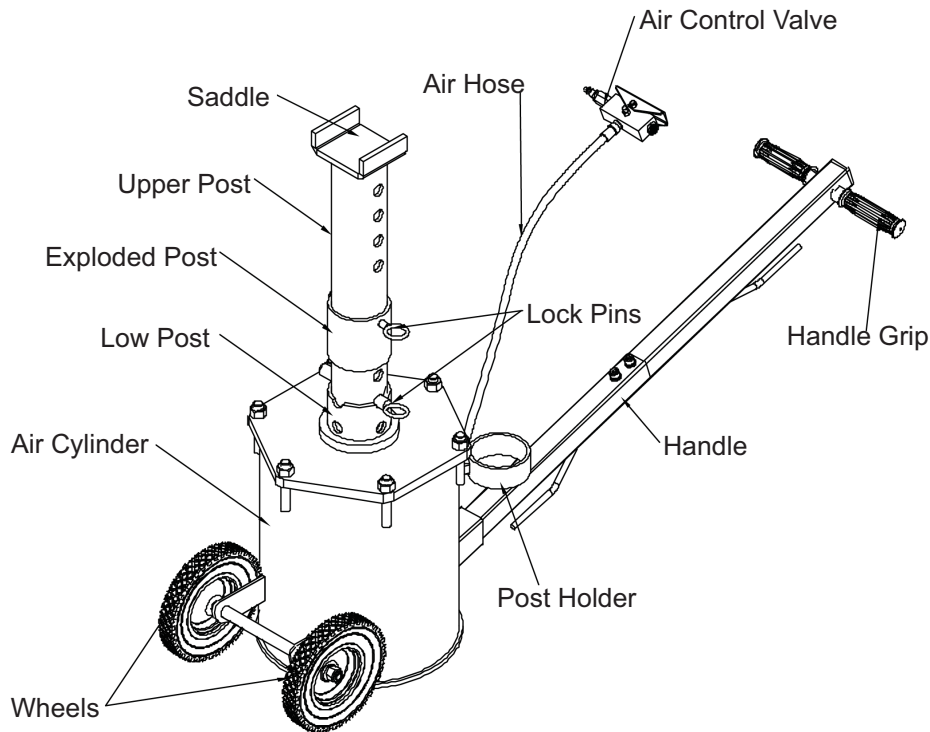


Figure 1 - Air Jack/Support Stand components

## PREPARATION

### Before Use:

1. Verify that the product and application are compatible, if in doubt call your supplier for assistance.
2. Before use, read the operator's manual completely and familiarize yourself thoroughly with the product and its components, and recognize the potential hazards associated with its use. Know your jack and how it operates before attempting to use.

### Assemble Handle:

1. Assemble #21 handle A and #22 Handle B with the parts #18 #19 and #20.
2. Attach handle to the handle bracket on cylinder with screw #23, lock washer #28 and washer #29.
3. Refer to parts drawing on page 6 for component location.

### Prepare Air System:

**⚠ CAUTION:** Air source must not exceed 200 psi maximum.

1. Connect a union fitting (sold separately) to the air supply inlet (ref. Fig. 2).
2. Attach 1/4" NPT coupler (sold separately) to union fitting if desired.
3. Frequent, but not excessive lubrication is required for best performance. Too much oil will collect inside jack and be expelled during exhaust cycle. An automatic inline oiler is recommended, but oil may be added manually before operation or after approximately 1 hour of continuous use. Pour 1 teaspoon of good quality air tool lubricant into air supply inlet of control valve.
4. Dirt and water may accumulate inside jack during use. An inline filter/dryer is recommended.
5. Air Jack/Support Stand is now ready for use.

**⚠ WARNING:** Never use more than one extension with this unit. Using more than one extension causes the load to be lifted beyond the maximum designed safety lifting height, which could cause loss of load.

### Check the Jack:

1. Examine the jack for broken or damaged parts. Roll the jack to ensure that it rolls freely and smoothly.
2. Raise and lower the unloaded saddle throughout the lift range to ensure proper operation before placing any load on the product.
3. Replace worn or damaged components with factory replacement parts only. (See Replacement Parts Section). Lubricate as instructed in Maintenance Section.

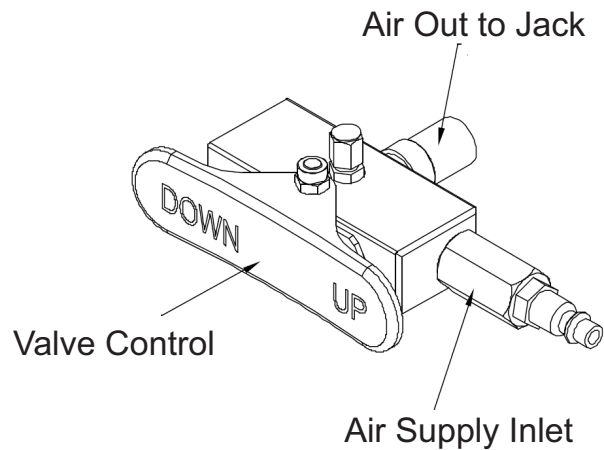


Figure 2 - Air Valve

## OPERATION

### Lifting:

**⚠ WARNING:** Only attachments and/or adapters supplied by the manufacturer shall be used.

**⚠ WARNING:** Do not connect two jacks to one control valve. Operating the jacks in this way can cause loss of control during raising and lower the vehicle.

1. Follow the vehicle manufacturer's recommended guidelines for lifting.
2. Position vehicle on hard level surface with parking brake selected. Chock wheels at opposite end. When lifting trailers, lower landing gear.

**⚠ WARNING:** Do not attempt to raise a partially filled tanker or transport containing an unrestrained load. A sudden load shift can occur causing dangerous tilting or toppling of the vehicle.

**NOTICE:** Actuation of the air control valve will raise and lower the post.

3. Position the unit under the lift point of the vehicle such that load will be centered on lifting saddle.
4. Extend post to desired height and insert locking pin through appropriate hole. If necessary, use post extension for additional height. Post extension slides inside post and is held in place with safety pin (ref. parts drawing).
5. Connect air compressor hose to control valve, then attach to air supply of 200 psi maximum. The unit is now ready to lift.
6. Press the air control valve lever marked "UP" to raise post until it contacts vehicle lift point. Ensure lift point is secure and centered on lift post saddle.
7. Press and hold air control valve until desired height has been achieved, insert the other lock pin through the hole in the ram post such that the lock pin will fully engage both sides of the head plate when lowered.
8. Slowly release the air pressure and make sure the lock pin engages fully into both sides of the low post slot.
9. Ensure the vehicle is level and stable, then fully discharge air pressure.
10. Before working around the lifted vehicle, ensure the vehicle is level and stable between the jacks.

**⚠ WARNING:** After lifting, never work on, under or around a load until the post is properly pinned and the air is exhausted. If the air is not exhausted and the jack is not properly pinned, the jack may rise or drop suddenly when a heavy object is removed from or placed on the vehicle.

**⚠ WARNING:** Do not repair, disassemble or maintain the jack until all air is exhausted from the jack.

## Lowering:

**⚠ WARNING:** Check that all tools and personnel are clear before lowering load. Maintain control of speed at which load descends at all times.

1. Press the "UP" air control valve lever to raise post locking pin away from cap plate.
2. Ensure the vehicle is still stable, then remove lift post locking pin.
3. Press the "DOWN" air control valve lever to exhaust air pressure. Vehicle will gradually lower.
4. Discharge the air pressure from the jack fully once the vehicle is on the ground.
5. Ensure saddle is fully lowered, remove jack from under the vehicle and store properly.

## TROUBLESHOOTING

Symptom	Possible Causes	Corrective Action
Air Jack will not lift load	<ul style="list-style-type: none"><li>• Inadequate air supply</li><li>• Overload condition</li><li>• Air line leaks</li></ul>	<ul style="list-style-type: none"><li>• Ensure adequate air supply</li><li>• Use larger capacity jack</li><li>• Locate and seal leaks</li></ul>
Air Jack will not hold load	<ul style="list-style-type: none"><li>• Locking pin not engaged</li></ul>	<ul style="list-style-type: none"><li>• Engage locking pin</li></ul>
Air Jack does not lift smoothly	<ul style="list-style-type: none"><li>• Cylinder requires lubrication</li></ul>	<ul style="list-style-type: none"><li>• Apply #630-AAA Lubriplate to cylinder wall (see MAINTENANCE)</li></ul>

## MAINTENANCE

The Air Jack/Support Stand is best operated with an in-line oiler. If using the jack without an oiler, complete the following steps before each use, or every hour is used continuously:

1. Disconnect the jack from the air hose.
2. Apply a few drops of good quality pneumatic tool oil through the air line.

Inspections should be made before each use of jack, checking for abnormal conditions. Regular inspections should be made weekly for daily use and monthly for intermittent use.

1. Inspect air hose for leaks or kinks. Replace if necessary.
2. Air control valve should operate freely. Wheels should rotate freely.
3. The post should extend and retract smoothly throughout its full range. If jack does not lift smoothly, remove bolts around cylinder cover, remove cover and lift piston weld assembly to the piston stops. Tilt the assembly to clear the piston stops. Clean and lubricate using #630-AAA-Lubriplate.
4. A periodic coating of light lubricating oil to all rotating and sliding portions of the jack will help to prevent rust and assure that the wheels move freely.
5. Lower the saddle to its lowest position when not in use.
6. When jack is not in use, tip it forward until it rests on the wheels and use extra support to hold the jack as shown in Figure 3. This allows trapped water to drain from inside the cylinder.

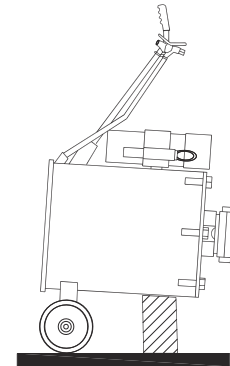


Figure 3

# REPLACEMENT PARTS

Not all components of the jack are replacement items, but are illustrated as a convenient reference of location and position in the assembly sequence. When ordering parts, give model number, part number and part description. Contact your distributor for current pricing.

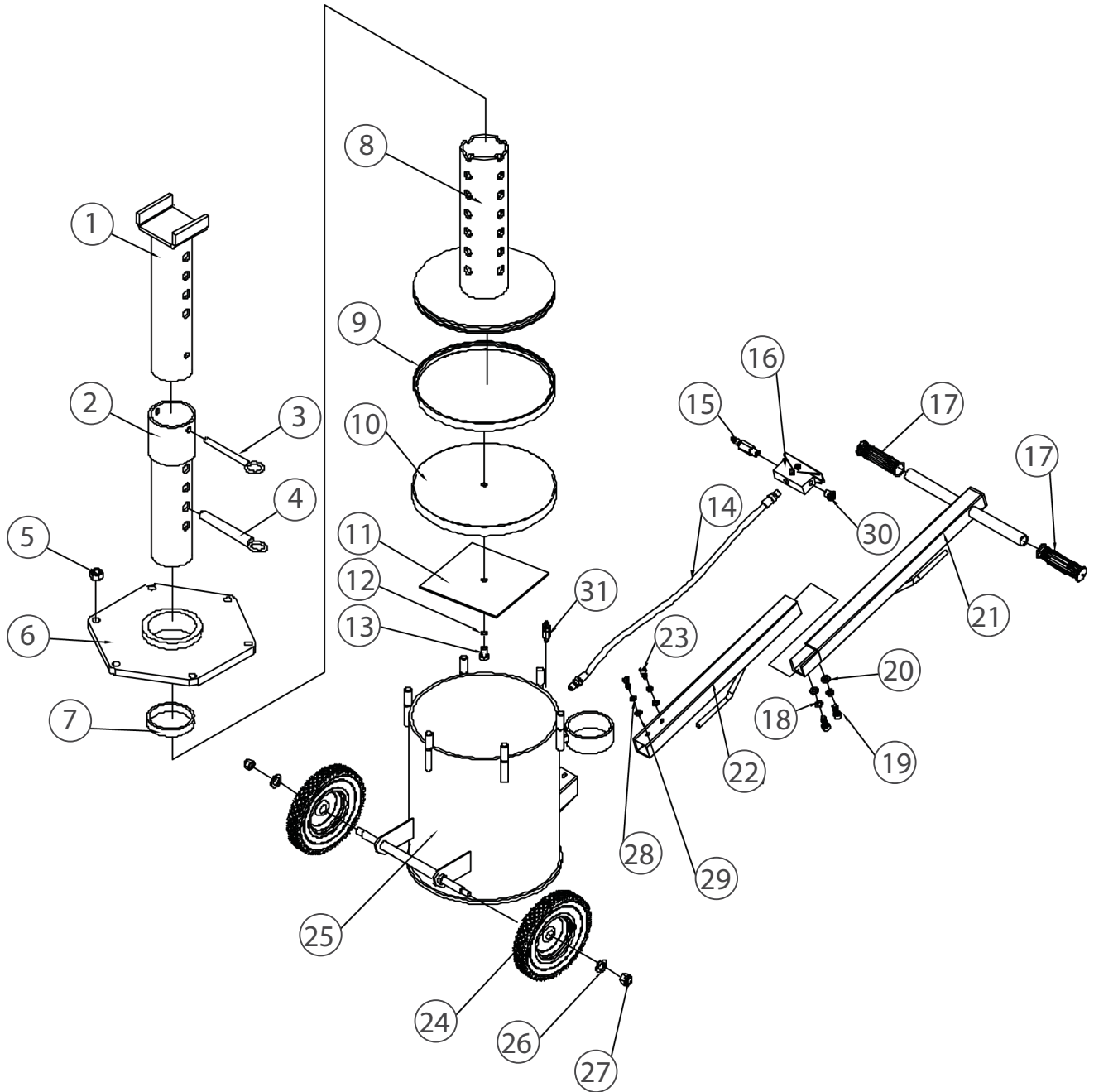


Figure 4 - Parts Illustration for model ATD-7350A

<b>ITEM#</b>	<b>ORDERING PART#</b>	<b>DESCRIPTION</b>	<b>QTY</b>
01	PRT7350A-01	SADDLE	1
02	PRT7350A-02	EXTENSION TUBE	1
03	PRT7350A-03	LOCK PIN	1
04	PRT7350A-04	LOCK PIN	2
05	PRT7350A-05	NUT	6
06	PRT7350A-06	COVER PLATE	1
07	PRT7350A-07	SUPPORT RING	1
08	PRT7350A-08	PISTON	1
09	PRT7350A-SK	SEAL RING	1
10	PRT7350A-SK	SEAL RING	1
11	PRT7350A-11	PLATE	1
12	PRT7350A-SK	O-RING	1
13	PRT7350A-13	BOLT	1
14	PRT7350A-14	AIR HOSE	1
15	PRT7350A-15	AIR HOSE FITTING	1
16	PRT7350A-16	AIR VALVE	1
17	PRT7350A-17	HANDLE GRIP	2
18	PRT7350A-18	LOCK WASHER	2
19	PRT7350A-19	SCREW	2
20	PRT7350A-20	FLAT WASHER	2
21	PRT7350A-21	UPPER HANDLE	1
22	PRT7350A-22	LOWER HANDLE	1
23	PRT7350A-23	BOLT	2
24	PRT7350A-24	PIN	2
25	PRT7350A-25	CYLINDER	1
26	PRT7350A-26	WHEEL	2
27	PRT7350A-27	FLAT WASHER	2
28	PRT7350A-28	NUT	2
29	PRT7350A-29	FLAT WASHER	2
30	PRT7350A-30	SILENCER	1
31	PRT7350A-31	SAFETY VALVE	1



**THIS WARRANTY AND CONFIRMED RECEIPT(S) SHOULD BE RETAINED BY THE CUSTOMER AT ALL TIMES**

PURCHASED FROM: \_\_\_\_\_

DATE PURCHASED: \_\_\_\_\_

INVOICE/RECEIPT NUMBER: \_\_\_\_\_

Your ATD-7350A is warranted for a period of 12 months from the original purchase date.

For a period of one (1) year from your purchase date, ATD Tools Inc. will repair or replace (at its option) without charge, your ATD product if it was purchased new and the product has failed due to a defect in material or workmanship which you experienced during normal use of the product. This limited warranty is your exclusive remedy.

To access the benefits of this warranty, contact your supplier, or point of sale directly. You may be advised to return the product under warranty, freight prepaid, to your supplier for warranty determination.

If this ATD product is altered, abused, misused, modified, or undergoes service by an unauthorized technician, your warranty will be void. We are not responsible for damage to ornamental designs you place on this ATD product and such ornamentation should not cover any warnings or instructions or they may void the warranty. This warranty does not cover scratches, superficial dents, and other abrasions to the paint finish that occur under normal use. It also does not cover normal wear items such as but not limited to brushes, batteries, drill bits, drill chucks, pads or blades.

Subject to the law in your state:

- (1) Your sole and exclusive remedy is repair or replacement of the defective product as described above.
- (2) ATD is not liable for any incidental damages, including but not limited to, lost profits and unforeseeable consequences.
- (3) The repair and replacement of this product under the express limited warranty described above is your exclusive remedy and is provided in lieu of all other warranties, express or implied. All other warranties, including implied warranties and warranties of merchantability or fitness for a particular purpose are disclaimed and, if disclaimer is prohibited, these warranties are limited to one year from your date of purchase of this product.

Some states' laws do not allow limited durations on certain implied warranties and some states' laws do not allow limitations on incidental or consequential damages. You should consult the law in your state to determine how your rights may vary.

[Affix receipt or invoice here for safe keeping]