



ATD-7237 Heavy-Duty Truck/Tractor Tire Wheel Dolly Owner's Manual



Features:

- Heavy-duty lift arms with ball bearing conveyor rollers allow easy wheel rotation for bolt pattern hole alignment
- Foot pedal provides adjustable height for unobstructed access to hub area
- Side-to-side lift arm adjustment eliminates the trial and error method of alignment
- Rear mounted ball bearing casters provide easy maneuverability
- Locking casters prevent the dolly from moving
- Meets or exceeds ASME/PASE 2019 requirements

Specifications:

- Capacity: 3,300 lbs.
- Min. Height: 0"
- Max. Height: 27.56"
- Minimum Wheel Diameter: 39.37"
- Maximum Wheel Diameter: 86.61"
- Maximum Wheel Width: 31.49"
- Weight: 275.6 lbs.

DANGER indicates when your action or lack of action may cause serious injury or even death.

WARNING indicates a potential danger that requires correct action to avoid personal injury.

IMPORTANT indicates correct action to prevent damage or equipment failure.

Save these instructions. For your safety, *read, understand and follow* the information contained within. The owner and operator should have an understanding of this product and safe operating procedures before attempting to use this product. Instructions and safety information should be conveyed in the operator's native language before use of this product is authorized. Make certain that the operator thoroughly understands the inherent dangers associated with the use and misuse of the product. If any doubt exists as to the safe and proper use of this product as outlined in this factory authorized manual, remove it from service.

Inspect before each use. Do not use if there are broken, bent, cracked or otherwise damaged parts (including labels). If the dolly operates abnormally, discontinue use until inspected by a service center. Owners and operators of this equipment shall be aware that the use of this equipment may require special training and knowledge. It is recommended that an annual inspection be done by qualified personnel and that any missing or damaged decals, warning / safety labels or signs be replaced with factory authorized replacements only. Any dolly that appears to be damaged in structure should be removed from service and destroyed immediately.

PRODUCT DESCRIPTION

The ATD-7237 Heavy-Duty Truck/Tractor Tire Wheel Dolly is designed for effortless, fast and safe removal, handling and fitting of agricultural, industrial and commercial wheels. The lifting action is achieved using a two stage hydraulic pump mounted inside the frame. The wheel to be handled is lifted on two tables of rollers, one mounted on each leg. The hydraulic pump draws the legs together under the wheel so that the wheel is lifted by the rollers and a safety lock applied. The wheel is balanced securely using the integral wheel support.

SAFETY

To avoid personal injury or property damage, please follow all safety precautions. The manufacturer cannot be responsible for injury or damage resulting from unsafe and incorrect products use or system operation, or lack of maintenance.

DANGER

- Danger from unsecured load. The operator must ensure that wheels to be carried by the machine are correctly loaded and supported in accordance with the operating instructions.
- To avoid personal injury, do not make any modifications to the Heavy-Duty Truck/Tractor Tire Wheel Dolly
- Always use the locking mechanism which locks the lifting rollers in position before operating the loaded Heavy-Duty Truck/Tractor Tire Wheel Dolly
- Potential slip/fall hazard. Never stand or ride on the Heavy-Duty Truck/Tractor Tire Wheel Dolly.

WARNING

- The operator should be experienced and in good health to avoid danger to himself and others.
- Never use the Heavy-Duty Truck/Tractor Tire Wheel Dolly for wheels of larger diameter, wider or heavier than those listed in the technical specifications on the cover of this manual.
- Refer to figure 1 on page 2. The support arm (#4) and clamp support arm (#1) are only to be used to balance the wheel, NOT to carry a load.
- The Heavy-Duty Truck/Tractor Tire Wheel Dolly must only be used on horizontal workshop floors that are swept clean of any debris. **DO NOT** use this unit on a sloping surface.
- Never drive this unit over edges, rough surfaces, or corners etc. when there is a load on it as the whole unit can overturn.
- It is important for safety that the unit is secured by the locking pin (#9) on the nearest hole before operating the unit. If this lock is not used, the Heavy-Duty Truck/Tractor Tire Wheel Dolly could come apart while carrying the load and the wheel could tip out.
- Always stand and operate the unit from behind the support arm (#4).
- **DO NOT** operate or move the wheel from in front of the clamp support arm (#1).
- When refilling the oil reservoir, the conveyor rollers must be pumped fully apart before the oil reservoir plug (#10) is removed otherwise there is a risk of excess pressure in the reservoir which can cause oil to squirt out when the refill screw is loosened.
- Use only approved hydraulic oil (ISO VG13) or equivalent.
- For hydraulic technical help or repair service, please contact a service center in your area. Manufacturer has no obligations under any warranty with respect to products that have been repaired by unauthorized personnel, modified, or damaged through misuse, abuse, accident, neglect, or mishandling.

IMPORTANT

- The operator must be in good health with the physical ability to carry out all operations required.
- The operator must understand how this Heavy-Duty Truck/Tractor Tire Wheel Dolly works, be responsible when operating the machine and aware of potential danger.
- The operator must have read this manual and fully understands the warning symbols on the Heavy-Duty Truck/Tractor Tire Wheel Dolly.
- Keep the Heavy-Duty Truck/Tractor Tire Wheel Dolly clean all the times.
- When the Heavy-Duty Truck/Tractor Tire Wheel Dolly is not in use, fully release the pressure.

OPERATING INSTRUCTIONS

USING THE HEAVY-DUTY TRUCK/TRACTOR TIRE WHEEL DOLLY TO REMOVE A WHEEL

Position the vehicle on a suitable horizontal floor, applying the brake. Jack up the axle of the wheel to be changed, with a suitable trolley jack so that it is clear of the floor. Secure with jack stands.

1. Unlock the pin (#9), then press the control pedal (#7) to the "A" position. Pump apart the Heavy-Duty Truck/Tractor Tire Wheel Dolly conveyor rollers with the pump lever (#6) to move the roller table (#5) in to correct position.
2. Adjust the wheel support arm (#4) so that the clamp support arm (#1) is positioned over the wheel to be handled.
3. Push the Heavy-Duty Truck/Tractor Tire Wheel Dolly unit under the wheel so that the roller tables are positioned on either side of the wheel and that the wheel sits up against the vertical wheel support arm (#4).
4. Lower clamp support arm (#1) behind the wheel and adjust until the wheel is vertical and can be moved approximately 2" sideways. This will allow the wheel to be rotated in the Heavy-Duty Truck/Tractor Tire Wheel Dolly when re-locating wheel studs. Lock the clamp support arm in position by tightening lock arm (#2 and #3).

WARNING! THE WHEEL SUPPORT ARM (NO.4) AND CLAMP SUPPORT ARM (NO.1) ARE ONLY USED TO BALANCE THE WHEEL, NOT TO CARRY A LOAD.

5. Press the control pedal (#7) to the "B" position. Lift the wheel by pumping the lever (#6). When the wheel is positioned on the unit the Heavy-Duty Truck/Tractor Tire Wheel Dolly must be secured in the lifting position with the lock pin (#9).

IMPORTANT: Ensure that lock pin (#9) is secured through the nearest location hole on the inner member. This prevents unintentional lowering of the wheel while it is being handled.

6. With the wheel nuts removed, the wheel can now be safely carried away on the Heavy-Duty Truck/Tractor Tire Wheel Dolly.
7. Put pump lever (#6) into socket (#11) to use as a handle (#12), use the handles to move the Heavy-Duty Truck/Tractor Tire Wheel Dolly.

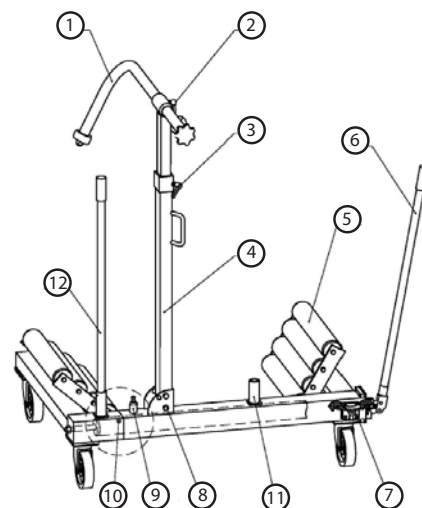


Figure 1

UNLOADING THE DUAL WHEEL DOLLY

When the wheel is located on the wheel studs and secured with wheel nuts or the wheel has been moved to a place for storage, then the wheel can be released.

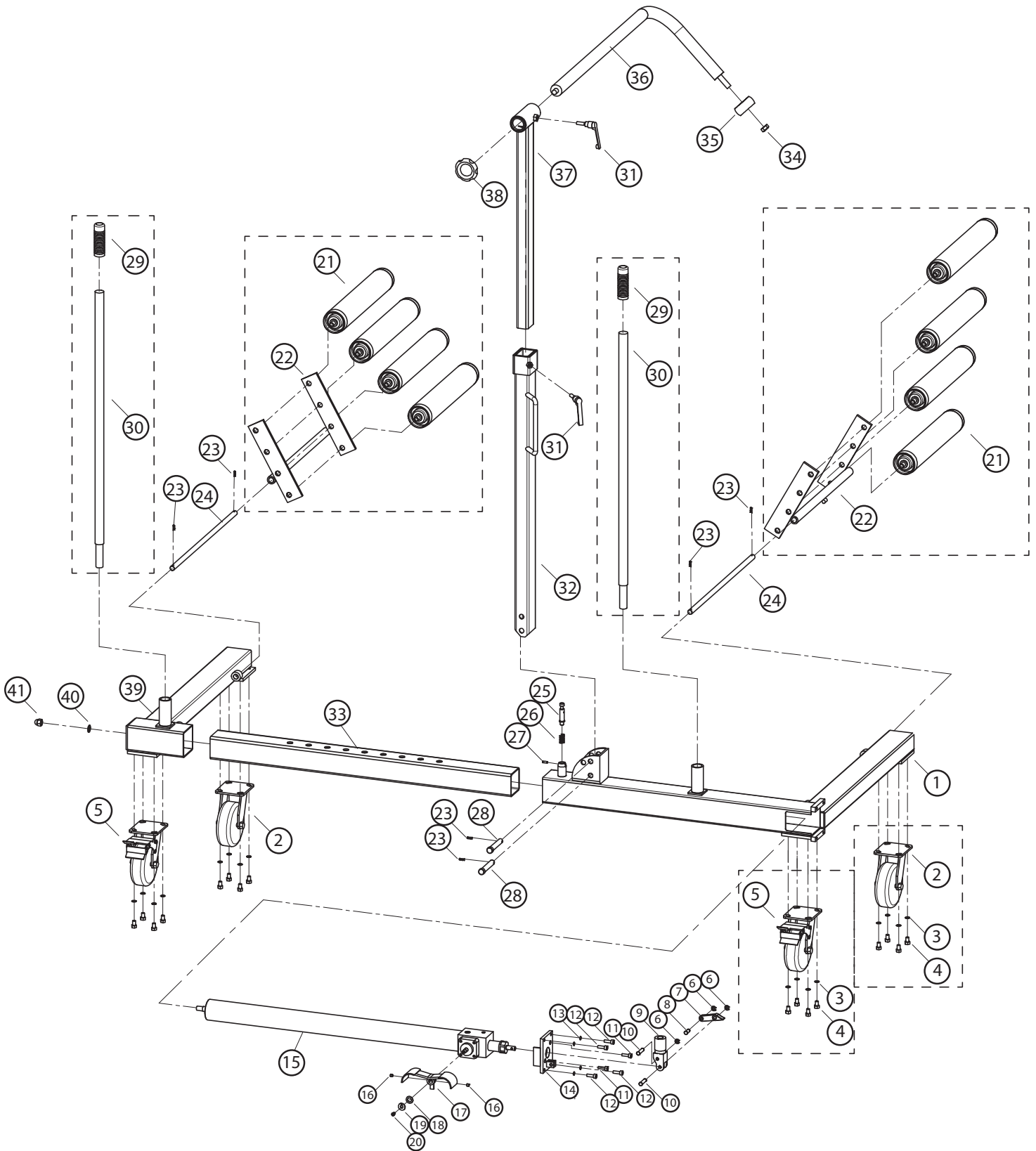
1. Lift and release the locking pin (#9).
2. Press the control pedal (#7) to the "A" position. Operate the pump lever (#6).
3. Loosen clamp support arm (#1) by releasing lock arm (#2 and #3).
4. Adjust the support arm (#4) so that it does not catch on the top of the wheel, then move the Heavy-Duty Truck/Tractor Tire Wheel Dolly.

REFILLING THE HYDRAULIC OIL

For best results, change fluid every 8 working hours. When refilling the hydraulic oil reservoir, pump the Heavy-Duty Truck/Tractor Tire Wheel Dolly until the lifting rollers are to their widest possible. Then remove the oil reservoir plug (#10) and fill the oil (ISO VG13) into the reservoir.

REPLACEMENT PARTS

Not all components of this product are replacement items, but are illustrated as a convenient reference for position in the assembly sequence. When ordering parts, give model number, part number and description. Call your distributor for current pricing:



| ITEM# | ORDERING PART# | DESCRIPTION | QTY |
|-------|----------------|--|-----|
| 1 | PRT7237-01 | RIGHT FRAME | 1 |
| 2 | PRT7237-02 | NON-LOCKING CASTER ASSEMBLY (PAIR) (2, 3, 4) | 2 |
| 3 | PRT7237-HK | Φ10 WASHER | 16 |
| 4 | PRT7237-HK | M10X15 BOLT | 16 |
| 5 | PRT7237-05 | LOCKING CASTER ASSEMBLY (PAIR) (5, 3, 4) | 2 |
| 6 | PRT7237-HK | Φ8 SPLIT WASHER | 3 |
| 7 | PRT7237-07 | LINKAGE | 1 |
| 8 | PRT7237-HK | PIN | 1 |
| 9 | PRT7237-09 | HANDLE SOCKET | 1 |
| 10 | PRT7237-HK | LINK PIN | 2 |
| 11 | PRT7237-HK | M12X25 BOLT | 2 |
| 12 | PRT7237-HK | M8X25 BOLT | 4 |
| 13 | PRT7237-HK | Φ8 WASHER | 4 |
| 14 | PRT7237-14 | RIGHT SIDE PLATE | 1 |
| 15 | PRT7237-15 | HYDRAULIC PUMP | 1 |
| 16 | PRT7237-HK | M8X8 SCREW | 2 |
| 17 | PRT7237-17 | PEDAL PARTS | 1 |
| 18 | PRT7237-HK | Φ6 WASHER | 1 |
| 19 | PRT7237-HK | Φ6 SPRING WASHER | 1 |
| 20 | PRT7237-HK | M6X15 SCREW | 1 |
| 21 | PRT7237-21 | ROLLER | 8 |

| ITEM# | ORDERING PART# | DESCRIPTION | QTY |
|-------|----------------|--------------------------|-----|
| 22 | PRT7237-21-22 | ROLLER ASSEMBLY (21, 22) | 2 |
| 23 | PRT7237-HK | PIN | 6 |
| 24 | PRT7237-24 | ROLLER ROD | 2 |
| 25 | PRT7237-25 | SHAFT | 1 |
| 26 | PRT7237-HK | SPRING | 1 |
| 27 | PRT7237-HK | Φ5X20 PIN | 1 |
| 28 | PRT7237-28 | FIXED PIN | 2 |
| 29 | PRT7237-29-30 | HANDLE ASSEMBLY (29, 30) | 2 |
| 30 | PRT7237-29-30 | HANDLE ASSEMBLY (29, 30) | 2 |
| 31 | PRT7237-31 | ADJUSTABLE HANDLE | 2 |
| 32 | PRT7237-32 | SUPPORT ARM | 1 |
| 33 | PRT7237-33 | EXTENSION TUBE | 1 |
| 34 | PRT7237-HK | M16 LOCKNUT | 1 |
| 35 | PRT7237-35 | NYLON WHEEL | 1 |
| 36 | PRT7237-36 | CLAMP SUPPORT ARM | 1 |
| 37 | PRT7237-37 | LOCK ARM | 1 |
| 38 | PRT7237-38 | ROTARY KNOB | 1 |
| 39 | PRT7237-39 | LEFT FRAME | 1 |
| 40 | PRT7237-HK | Φ14 WASHER | 1 |
| 41 | PRT7237-HK | M14 NUT | 1 |

*HARDWARE KIT INCLUDES: 3, 4, 6, 8, 10, 11, 12, 13, 16, 18, 19, 20, 23, 26, 27, 34, 40 & 41



THIS WARRANTY AND CONFIRMED RECEIPT(S) SHOULD BE RETAINED BY THE CUSTOMER AT ALL TIMES

PURCHASED FROM: _____

DATE PURCHASED: _____

INVOICE/RECEIPT NUMBER: _____

Your ATD-7237 is warranted for a period of 12 months from the original purchase date.

For a period of one (1) year from your purchase date, ATD Tools, Inc. will repair or replace (at its option) without charge, your ATD product if it was purchased new and the product has failed due to a defect in material or workmanship which you experienced during normal use of the product. This limited warranty is your exclusive remedy.

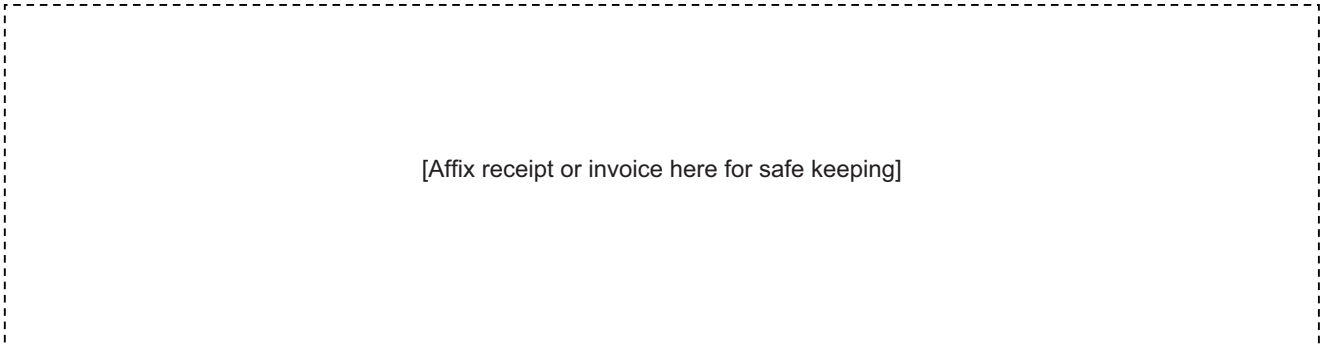
To access the benefits of this warranty, contact your supplier, or point of sale directly. You may be advised to return the product under warranty, freight prepaid, to your supplier for warranty determination.

If this ATD product is altered, abused, misused, modified, or undergoes service by an unauthorized technician, your warranty will be void. We are not responsible for damage to ornamental designs you place on this ATD product and such ornamentation should not cover any warnings or instructions or they may void the warranty. This warranty does not cover scratches, superficial dents, and other abrasions to the paint finish that occur under normal use. It also does not cover normal wear items such as but not limited to brushes, batteries, drill bits, drill chucks, pads or blades.

Subject to the law in your state:

- (1) Your sole and exclusive remedy is repair or replacement of the defective product as described above.
- (2) ATD is not liable for any incidental damages, including but not limited to, lost profits and unforeseeable consequences.
- (3) The repair and replacement of this product under the express limited warranty described above is your exclusive remedy and is provided in lieu of all other warranties, express or implied. All other warranties, including implied warranties and warranties of merchantability or fitness for a particular purpose are disclaimed and, if disclaimer is prohibited, these warranties are limited to one year from your date of purchase of this product.

Some states' laws do not allow limited durations on certain implied warranties and some states' laws do not allow limitations on incidental or consequential damages. You should consult the law in your state to determine how your rights may vary.



[Affix receipt or invoice here for safe keeping]