



## ATD-70450 ATD-70451 31" 4-Drawer Deluxe Service Cart Owner's Manual



### Features:

- Threaded insert fasteners reduce assembly time by 50%
- Central locking system allows access to drawers when lid is in the closed position
- Quick release gas struts allow the lid to easily fold behind cart
- 110V 4-outlet power strip with 2 USB ports
- Internal prybar and screwdriver racks
- (4) Bumpers prevent dents and damage
- Full extension roller bearing slides
- Deluxe drawer liners and bottom tray liner included
- (4) 265 lbs. capacity 5" x 2" swivel casters, (2) locking
- Casters are fully assembled at factory
- Welded reinforced bottom channel support
- Cushion grip push handle

### Dimensions:

	WIDTH	DEPTH	HEIGHT	CAPACITY
Overall:	31"	20.4"	40.2"	500 lbs.
Top Compartment:	29.6"	18.8"	5.9"	100 lbs.
(2) Small Drawer:	11.6"	20.5"	2.8"	40 lbs. each
(1) Middle Drawer:	25.4"	17.2"	2.8"	100 lbs.
(1) Big Drawer:	25.4"	17.2"	6"	100 lbs.
(1) Bottom Tray:	30"	19.2"	3"	120 lbs.

## READ AND UNDERSTAND THIS MANUAL BEFORE USING THIS PRODUCT

Do not open more than 1 drawer at 1 time as the cart can become unstable and turn over causing property damage and/or personal injury. Heed the warnings on all labels.

### ASSEMBLY INSTRUCTIONS

This fast assembly cart is built in sections to allow for quicker assembly.  
A T40 star socket or wrench (not included) is necessary to tighten the fasteners.

- 1) Place a blanket or other soft covering on the floor or dry flat surface in preparation for assembly.
- 2) Open the cart lid and then lay the cart on its back on the blanket. (See figure 1).

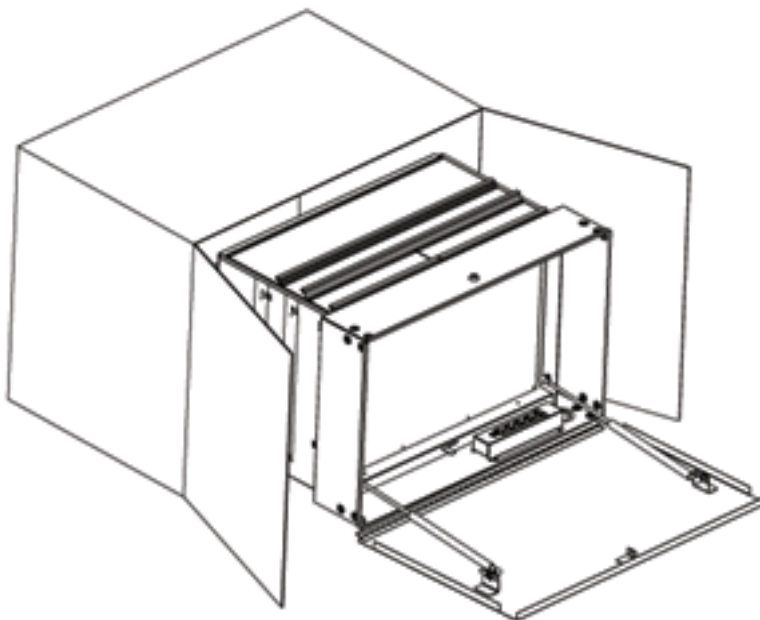


Figure 1

- 3) Attach the prybar holder to the front and rear cart leg/bumper assemblies. Make sure the wide side of the pry bar holder is placed against the legs. Repeat the same operation to assemble the other pair of legs and pry bar holder. (See figure 2).

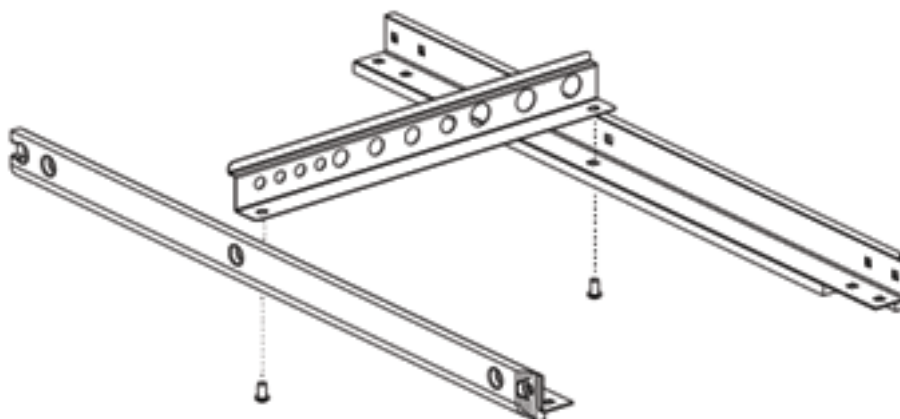


Figure 2

- 4) Attach the leg/bumper assembly to each side of the cart, aligning the cutout section of the plastic bumper so the bolts fit the top of the cart. Leave bolts loose to allow for attachment of the tray in the next step. (See figure 3).

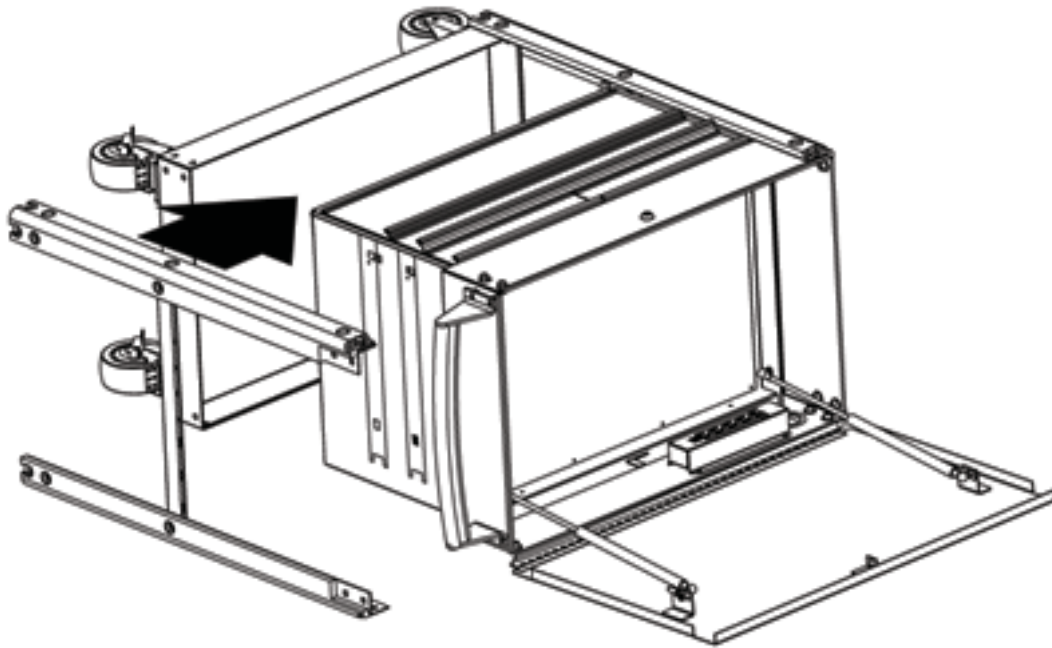


Figure 3

- 5) Attach the leg/bumper assembly to the bottom tray. (See figure 4).

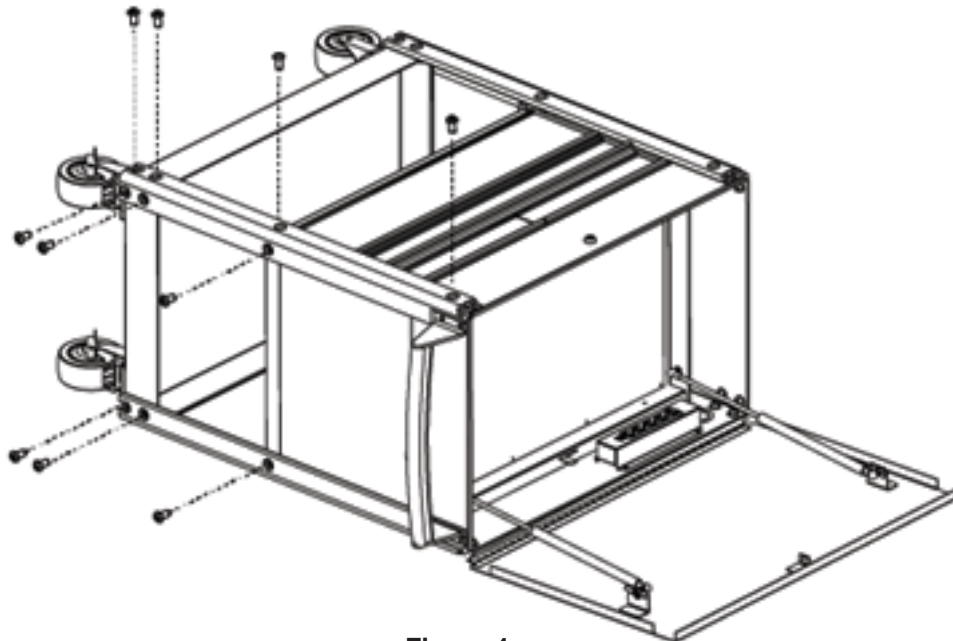
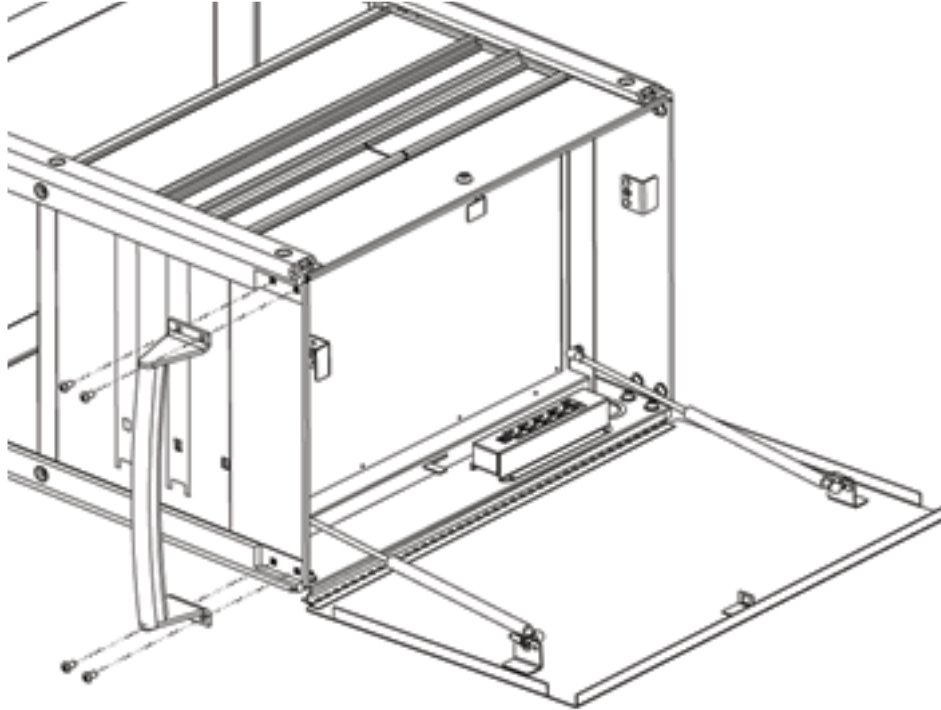


Figure 4

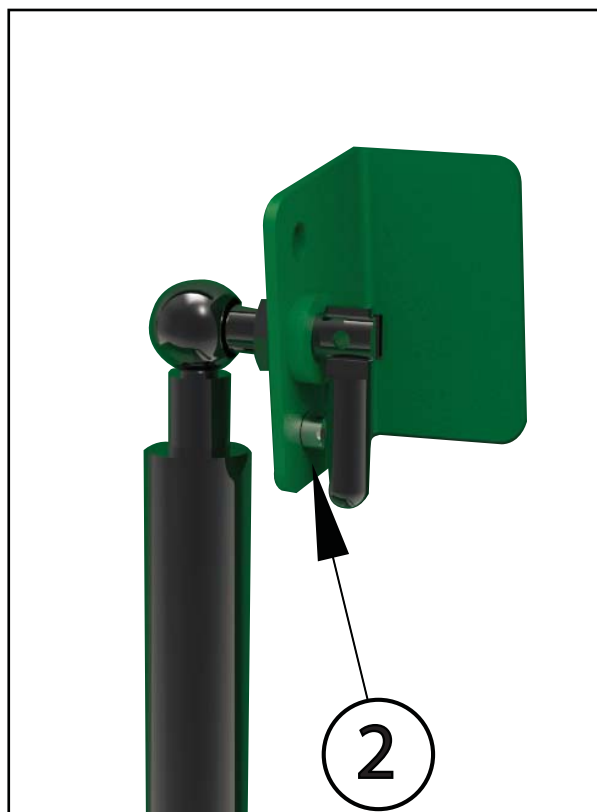
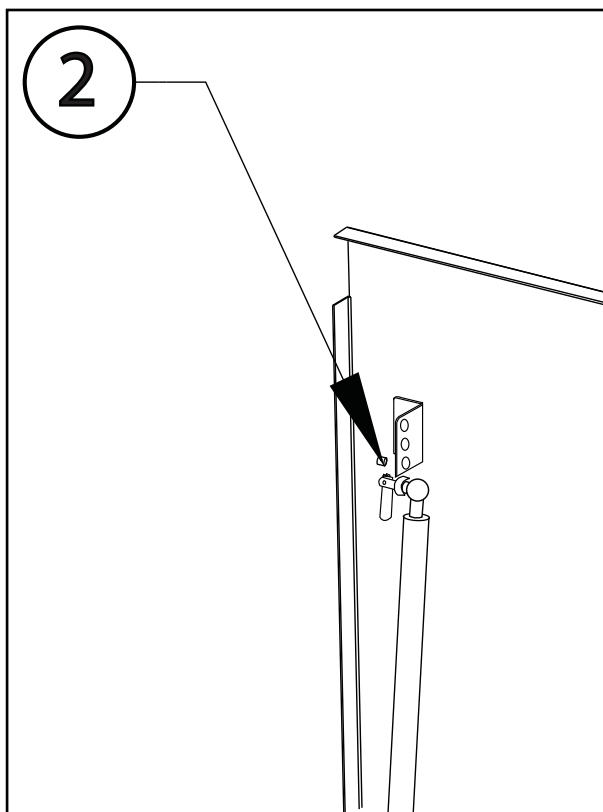
- 6) Once all bolts have been inserted and are aligned, fully tighten all bolts.
- 7) Attach the push handle – it can be mounted on either side of the cart. (See figure 5). Note that in the hardware package, 4 of the bolts are slightly longer. Use these 4 bolts to attach the handle. The other 4 shorter bolts are inserted into the other side of the cart to fill the handle mounting holes on that side.



**Figure 5**

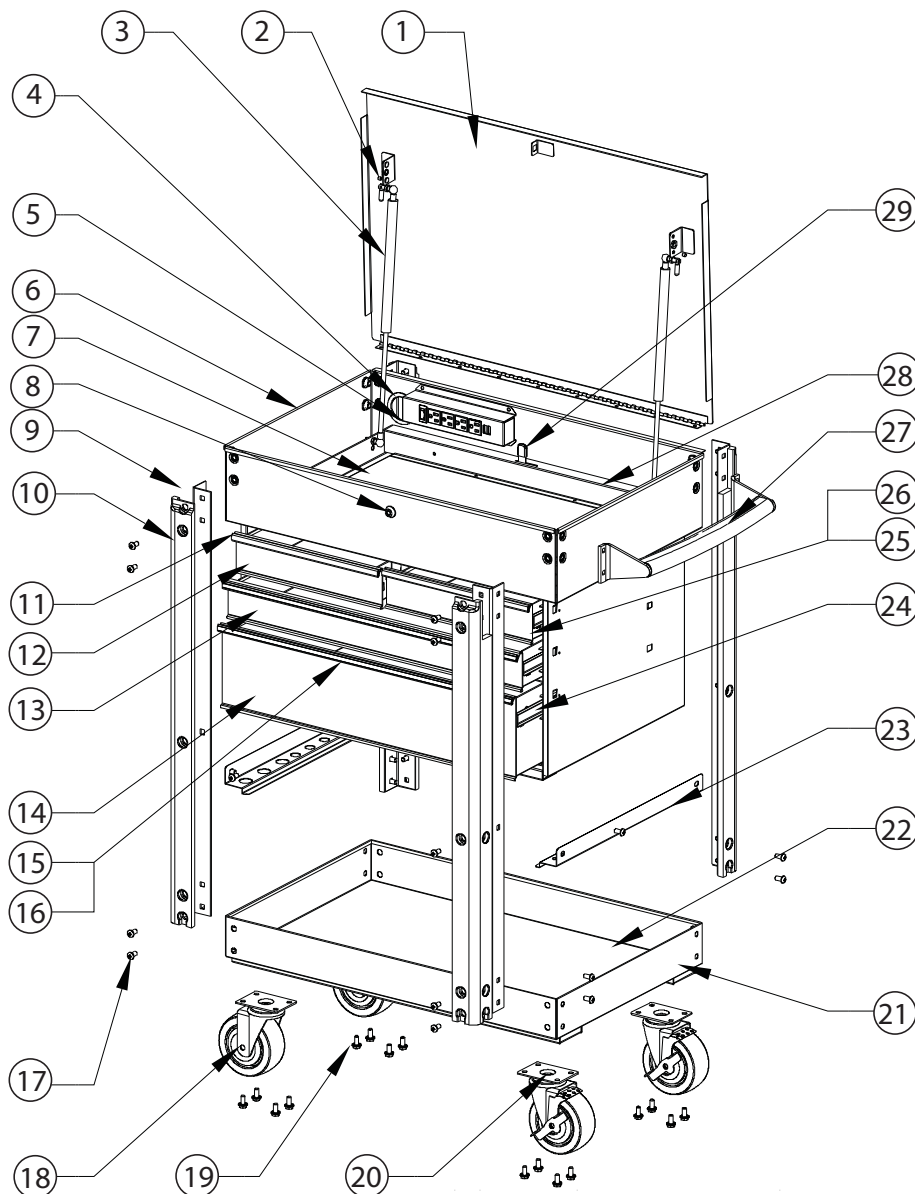
- 8) Using 2 people, stand the cart up. Recheck all bolts to make sure that they are fully tightened.
- 9) Your ATD service cart is now ready for use.

**NOTE:** This cart has a quick disconnect feature on the gas struts. If you want to fold the lid down over the back, you can flip the "bayonette" on the end of the strut and then pop out the end of the strut. The magnet (#2) is there to keep the bayonette in place while in use.



## REPLACEMENT PARTS

Not all components of the cart are replacement items, but are illustrated as a convenient reference for position in the assembly sequence. When ordering parts, give model number, part number and description. Call your distributor for current pricing:



ITEM#	ORDERING PART#	PART DESCRIPTION	QTY
1	PRT70450-01	TOP LID - GREEN*	1
1	PRT70451-01	TOP LID - BLACK*	1
2	PRT70450-02	MAGNETIC STRUT LATCH	2
3	PRT70450-03	QUICK RELEASE GAS STRUTS	2
4	PRT70450-04	RUBBER GROMMET	1
5	PRT70450-05	POWER STRIP - GREEN*	1
5	PRT70451-05	POWER STRIP - BLACK*	1
6	PRT70450-06	BODY - GREEN*	1
6	PRT70451-06	BODY - BLACK*	1
7	PRT70450-07	TOP BIN LINER	1
8	PRT70450-08	LOCK W/2 KEYS	1
9	PRT70450-09	LEG	4
10	PRT70450-10	BUMPER	4
11	PRT70450-11	SHORT DRAWER PULL	2
12	PRT70450-12	LEFT SMALL DRAWER - GREEN*	1
12	PRT70451-12	LEFT SMALL DRAWER - BLACK*	1
13	PRT70450-13	SMALL LONG DRAWER - GREEN*	1
13	PRT70451-13	SMALL LONG DRAWER - BLACK*	1
14	PRT70450-14	LARGE LONG DRAWER - GREEN*	1

ITEM#	ORDERING PART#	PART DESCRIPTION	QTY
14	PRT70451-14	LARGE LONG DRAWER - BLACK*	1
15	PRT70450-15	LONG DRAWER PULL	2
16	PRT70450-16	LONG DRAWER LINER	2
17	PRT70450-HK	INNER HEX SCREW	36
18	PRT70450-18	5" SWIVEL CASTER	2
19	PRT70450-HK	OUTER HEXAGON FLANGE BOLT	16
20	PRT70450-20	5" LOCKING SWIVEL CASTER	2
21	PRT70450-21	BOTTOM SHELF - GREEN*	1
21	PRT70450-22	BOTTOM SHELF - BLACK*	1
22	PRT70450-22	BOTTOM SHELF LINER	1
23	PRT70450-23	TOOL HOLDER - GREEN*	2
23	PRT70451-23	TOOL HOLDER - BLACK*	2
24	PRT70450-24	DRAWER SLIDE (SET)	4
25	PRT70450-25	RIGHT SMALL DRAWER - GREEN*	1
25	PRT70451-25	RIGHT SMALL DRAWER - BLACK*	1
26	PRT70450-26	SMALL DRAWER LINER	2
27	PRT70450-27	PUSH HANDLE	1
28	PRT70450-28	LOCK COVER	1
29	PRT70450-29	CENTRAL LOCKING SYSTEM	1

\* Please note when special ordering sheet metal parts, the part number WILL indicate the color



THIS WARRANTY AND CONFIRMED RECEIPT(S) SHOULD BE RETAINED BY THE CUSTOMER AT ALL TIMES

PURCHASED FROM: \_\_\_\_\_

DATE PURCHASED: \_\_\_\_\_

INVOICE/RECEIPT NUMBER: \_\_\_\_\_

Your ATD-70450 or ATD-70451 is warranted for a period of 12 months from the original purchase date.

For a period of one (1) year from your purchase date, ATD Tools, Inc. will repair or replace (at its option) without charge, your ATD product if it was purchased new and the product has failed due to a defect in material or workmanship which you experienced during normal use of the product. This limited warranty is your exclusive remedy.

To access the benefits of this warranty, contact your supplier, or point of sale directly. You may be advised to return the product under warranty, freight prepaid, to your supplier for warranty determination.

If this ATD product is altered, abused, misused, modified, or undergoes service by an unauthorized technician, your warranty will be void. We are not responsible for damage to ornamental designs you place on this ATD product and such ornamentation should not cover any warnings or instructions or they may void the warranty. This warranty does not cover scratches, superficial dents, and other abrasions to the paint finish that occur under normal use. It also does not cover normal wear items such as but not limited to brushes, batteries, drill bits, drill chucks, pads or blades.

Subject to the law in your state:

- (1) Your sole and exclusive remedy is repair or replacement of the defective product as described above.
- (2) ATD is not liable for any incidental damages, including but not limited to, lost profits and unforeseeable consequences.
- (3) The repair and replacement of this product under the express limited warranty described above is your exclusive remedy and is provided in lieu of all other warranties, express or implied. All other warranties, including implied warranties and warranties of merchantability or fitness for a particular purpose are disclaimed and, if disclaimer is prohibited, these warranties are limited to one year from your date of purchase of this product.

Some states' laws do not allow limited durations on certain implied warranties and some states' laws do not allow limitations on incidental or consequential damages. You should consult the law in your state to determine how your rights may vary.

[Affix receipt or invoice here for safe keeping]