



# ATD-5855 PNEUMATIC RIVET NUT SETTING KIT Owner's Manual



#### Features:

- Includes (8) mandrels/nosepieces in the following sizes: M4, M5, M6, M8, M10, 1/4", 5/16", 3/8"
- Instantly set rivet nuts with the pull of the trigger
- Quickly un-thread set rivet nuts by operating free spinning rear wheel
- 2,680 lbs. of instant air-hydraulic pulling force
- Max Capacity: M10 (3/8") steel and aluminum rivet nuts, M6 (1/4") stainless rivet nut

#### Specifications:

- Tool Stroke: 6.5mm
- Air Consumption: 3 CFM
- Max. Capacity:
  - M10 (3/8") steel and aluminum rivet nuts
  - M6 (1/4") stainless rivet nut
- Air Inlet: 1/4" NPT

## **WARNING**

Study, understand and follow all instructions provided with this product. Read these instructions carefully before installing, operating, servicing or repairing this tool. Keep these instructions in a safe accessible place.

## **INTENDED USE OF THE TOOL**

This tool intended to be used to set M4-M10 and 5/16-3/8" aluminum and steel rivet nuts and stainless steel rivet nuts up to 1/4" (M6). Operate only at the require air pressure necessary. Do not over-set rivet nuts. Do not use these tools outside of the designed intent. Never modify the tools for any other purpose or use.

## **WARNING**

**Caution:** To help prevent personal injury:

- Use of this product can expose you to chemicals such as phthalates which are known to the State of California to cause cancer, and birth defects or other reproductive harm. For more information go to [www.P65Warnings.ca.gov/product](http://www.P65Warnings.ca.gov/product).
- Always wear ANSI approved safety equipment, safety glasses and clothing when using this product.
- Study, understand, and follow all instructions provided with this product. Failure to read and follow all warnings and operating instructions may result in damages and serious injury or death.
- Always wear ANSI approved goggles when using this product. (Users and Bystanders).
- Never use this tool for any application other than for which it was designed.
- Only use accessories designed for this tool.
- Never alter or modify this tool in any way.
- Improper operation and/or maintenance of the tool, modification of the tool or use of the tool with accessories not designed for it could result in serious injury or death.
- Always select the correct accessories of the correct size and design for the job that you are attempting to perform.
- Always work in a clean, safe, well-lit, organized and adequately equipped area.
- Do not begin repairs without assurance that vehicle is in secure position and will not move during repair.

## **Before Use**

When unpacking, check the parts diagram and part number listing to make sure all parts are included. If any parts are missing or damaged, please call your distributor.

## **PRODUCT INFORMATION**

- Includes 8 mandrels / nosepieces in the following sizes: M4, M5, M6, M8, M10, 1/4", 5/16", 3/8"
- Instantly set rivet nuts with the pull of the trigger. Up to 3/8" (M10) in aluminum & steel
- Quickly un-thread set rivet nuts by operating free spinning rear wheel
- 2680lbs of instant air-hydraulic pulling force

## **SPECIFICATIONS**

Traction Power: 2680 lbs. (1219 kgs)

Tool Stroke: 6.5 mm

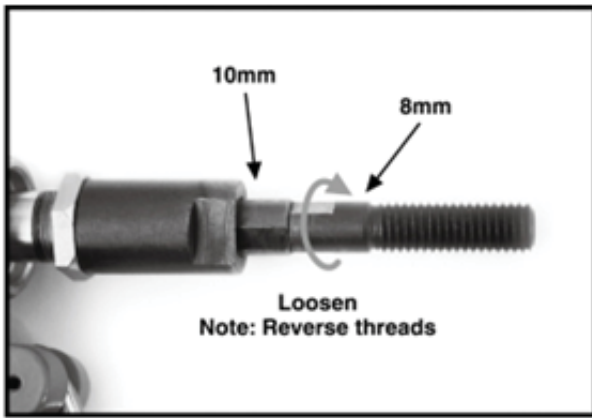
Air Consumption: 3 CFM

Work Capacity: up to 3/8" (M10) in aluminum & steel nuts, up to 1/4" (M6) in stainless nuts

Air Inlet: 1/4" NPT

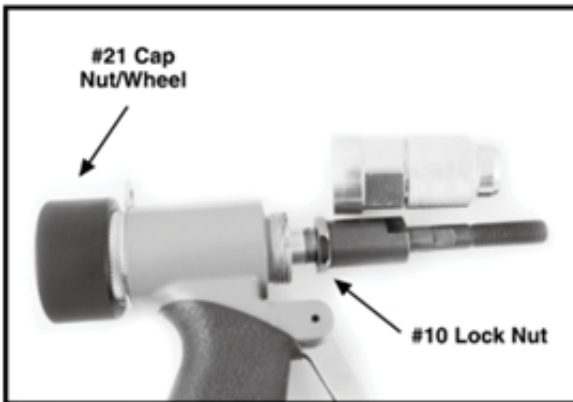
Weight: 3.59 lbs. (1.63 kgs)

## DISASSEMBLY



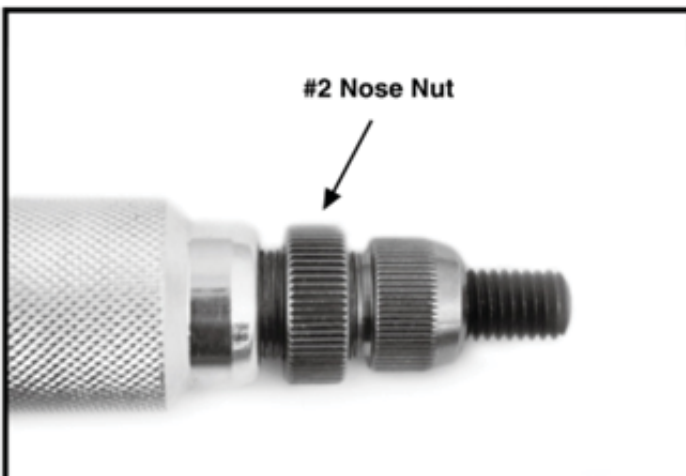
Use the provided wrenches or a 10mm and 8mm wrench to loosen the mandrel from the tool by turning it clock-wise due to the reverse threads.

## ADJUSTMENT



Adjustment of the stroke may be necessary at times based on the users application, however make sure the #10 Lock Nut is adjusted enough forward (and not too far back) so that the #4 connector housing relieves enough spring pressure when installed to allow the #21 Cap Nut/Wheel to freely spin. If the rear spinning wheel does not spin freely, adjust the #10 lock nut and #7 Spindle Guide until it does move freely with the #4 housing installed.

## NOSE NUT



Install the #2 Nose Nut on each new nosepiece to be used. Adjust to lock the nosepiece in place closer or further away as needed. The further away from the tool the nosepiece is locked into place, the more the stroke will be applied to the rivet nut and/or the less the rivet nut can be threaded onto the mandrel.

**NOTE: DO NOT OVER SET RIVET NUTS, ONLY ADJUST NOSEPIECES FORWARD AND INCREASE AIR PRESSURE AT REGULATOR AS NEEDED. OVER SETTING RIVET NUTS CAN CAUSE DAMAGE TO YOUR WORKPIECE AND/OR THIS TOOL.**

## **MAINTENANCE**

### **LUBRICATION:**

- Before connection of the hose, apply 4 to 5 drops of a good quality air tool oil at the air inlet.
- After 3 to 4 hours of operation, oiling may be necessary again.

### **TOOL CONDITION:**

- Regularly check whether all connection parts are fastened securely.
- Follow this procedure daily before beginning work.

### **STORAGE:**

Avoid storing the tool in a location subject to high humidity. If the tool is left unused, the residual moisture inside the tool can cause rust. Before storing and after operation, oil the tool at the air inlet with a good quality air tool oil and run it for a short period.

### **DISPOSAL:**

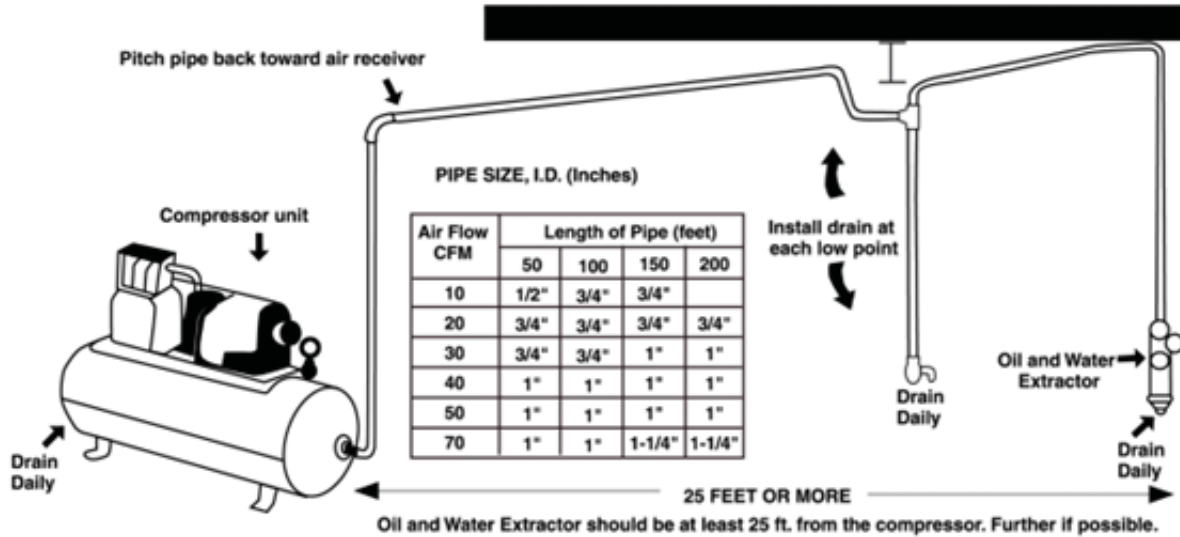
Follow your local guidelines for waste disposal.

### **WARNINGS:**

- The tool should not be used in potentially explosive atmospheres.
- Disconnect the air hose before changing or adjusting any inserted tools.
- Before using tool, please confirm all couplings and plugs are fixed securely. An air hose that is under pressure may lash out when disconnected and could lead to serious injuries.
- Prevent loose clothes, long hair or any other personal accessories from coming close to moving parts to reduce the risk of being caught, trapped or drawn into the rotating spindle.
- Excessive high air pressure that exceeds the maximum pressure may cause injuries to user.
- Exposure to strong vibration for extended time may cause harm to operator.
- Be aware of the rotation direction before starting the tool to reduce hazardous situations due to unexpected rotation direction.
- **WATCH YOUR STEP.** Leaving excess hose unattended near working area or walk path could result in injury or death.
- Wearing eye/face protection could reduce the danger to person from high speed splinters being emitted from the tool or work surface.
- Wearing correct breathing protection will help avoid inhaling dust or debris from work process that can be harmful to your health.
- High sound levels can cause permanent hearing loss. Use hearing protection while operating tool.
- Due to the material being processed, there may be a risk of explosion or fire. Be aware of work surface dangers prior to beginning work.
- There is a risk of being cut due to high speed rotation. Do not touch high speed rotating disc.
- This power tool is not insulated. If contact is made with an electric current, injury may occur.
- Dust created by sanding, sawing, grinding, drilling and other related activities may expose the user to dust and/or microscopic particles that may contain chemicals known to the State of California to cause cancer, birth defects or other reproductive harm.

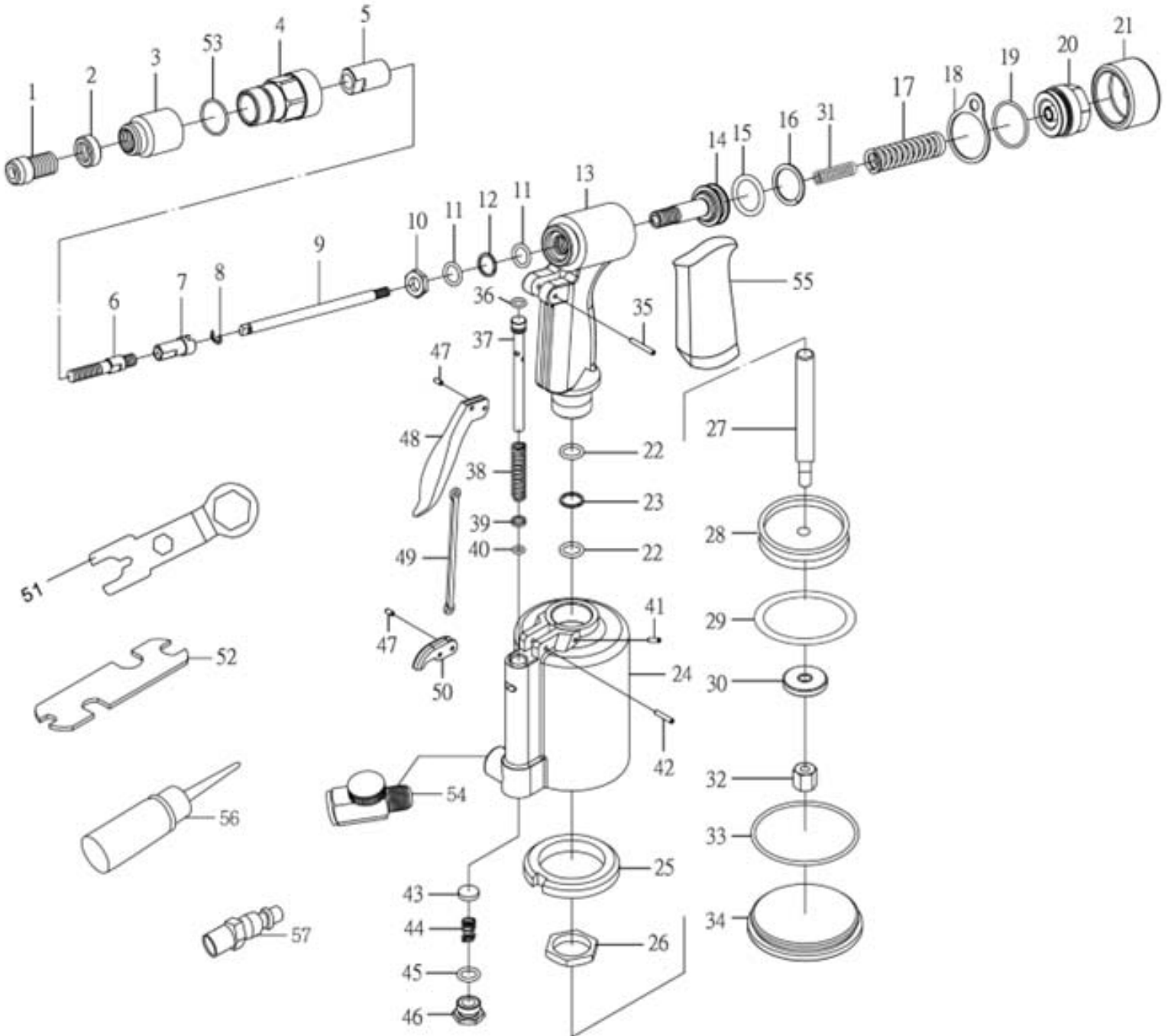
- The oil and water extractor should not be mounted on or near the air compressor.
- The temperature of air is greatly increased during compression. As the air cools down to room temperature, in the air line, on its way to the Air Power Tool, the moisture contained in it condenses. Thus, for maximum effectiveness, the oil and water extractor should be mounted at some point in the air supply system where the temperature of the compressed air in the line is likely to be lowest. Air lines must be properly drained daily. Each low point in an air line acts as a water trap. Such points should be fitted with an easily accessible drain. See diagram below. Pitch all air lines back towards the compressor so that condensed moisture will flow back into the air receiver where it can be drained off. **Drain daily.**

## SUGGESTED AIR LINE CONNECTION



## REPLACEMENT PARTS

Not all components of this product are replacement items, but are illustrated as a convenient reference for position in the assembly sequence. When ordering parts, give model number, part number and description. Call your distributor for current pricing:



ITEM#	ORDERING PART#	PART DESCRIPTION	QTY
1-1	PRT5855-01-1	NOSEPIECE, M4	1
1-2	PRT5855-01-2	NOSEPIECE, M5	1
1-3	PRT5855-01-3	NOSEPIECE, M6	1
1-4	PRT5855-01-4	NOSEPIECE, M8	1
1-5	PRT5855-01-5	NOSEPIECE, M10	1
1-6	PRT5855-01-6	NOSEPIECE, 1/4	1
1-7	PRT5855-01-7	NOSEPIECE, 5/16	1
1-8	PRT5855-01-8	NOSEPIECE, 3/8	1
2	PRT5855-02	NOSE NUT	1
3	PRT5855-03	STROKE ADAPTOR COVER	1
4	PRT5855-04	CONNECTOR HOUSING	1
5	PRT5855-05	JAW CASE, REAR	1
6-1	PRT5855-06-1	SCREW MANDREL (M4)	1
6-2	PRT5855-06-2	SCREW MANDREL (M5)	1
6-3	PRT5855-06-3	SCREW MANDREL (M6)	1
6-4	PRT5855-06-4	SCREW MANDREL (M8)	1
6-5	PRT5855-06-5	SCREW MANDREL (M10)	1
6-6	PRT5855-06-6	SCREW MANDREL (1/4)	1
6-7	PRT5855-06-7	SCREW MANDREL (5/16)	1
6-8	PRT5855-06-8	SCREW MANDREL (3/8)	1
7	PRT5855-07	SPINDLE GUIDE	1
8	PRT5855-08	E-RING	1
9	PRT5855-09	RETURN TUBE	1
10	PRT5855-10	LOCK NUT	1
11	PRT5855-RK	O RING (x2)	2
12	PRT5855-RK	BACKUP RING	1
13	PRT5855-13	FRAME	1
14	PRT5855-14	PISTON	1
15	PRT5855-RK	O RING	1
16	PRT5855-RK	BACKUP RING	1
17	PRT5855-RK	PISTON RING	1
18	PRT5855-18	HANGING CLIP	1
19	PRT5855-RK	O RING	1
20	PRT5855-20	FRAME CAP	1
21	PRT5855-21	SAFETY CAP NUT	1
22	PRT5855-RK	O RING (x2)	2

ITEM#	ORDERING PART#	PART DESCRIPTION	QTY
23	PRT5855-RK	BACKUP RING	1
24	PRT5855-24	CYLINDER	1
25	PRT5855-25	RUBBER CUSHION	1
26	PRT5855-26	LOCK NUT, FRAME	1
27	PRT5855-27	STEM, AIR PISTON	1
28	PRT5855-28	PLATE, LARGE	1
29	PRT5855-RK	PISTON RING	1
30	PRT5855-RK	WASHER	1
31	PRT5855-RK	SPRING	1
32	PRT5855-32	LOCK NUT, PISTON	1
33	PRT5855-RK	O RING	1
34	PRT5855-34	CAP, CYLINDER	1
35	PRT5855-35	SPRING PIN	1
36	PRT5855-RK	SPRING PIN	1
37	PRT5855-37	PUSHER, VALVE	1
38	PRT5855-RK	SPRING, VALVE	1
39	PRT5855-RK	COLLAR, VALVE	1
40	PRT5855-RK	O RING	1
41	PRT5855-41	SPRING PIN	1
42	PRT5855-42	SPRING PIN	1
43	PRT5855-43	VALVE	1
44	PRT5855-44	SPRING, VALVE	1
45	PRT5855-RK	O RING	1
46	PRT5855-46	CAP, VALVE	1
47	PRT5855-47	SPRING PIN	2
48	PRT5855-48	TRIGGER	1
49	PRT5855-49	TRIGGER ROD	1
50	PRT5855-50	TRIGGER LEVER	1
51	PRT5855-51	SPANNER	1
52	PRT5855-52	SPANNER	1
53	PRT5855-RK	O RING	1
54	PRT5855-54	BRASS REGULATOR	1
55	PRT5855-55	RUBBER SLEEVE	1
56	PRT5855-56	OIL POT	1
57	PRT5855-57	NIPPLE	1

**PRT5855-RK REPAIR KIT INCLUDES: 11 (x2), 12, 15, 16, 17, 19, 22 (x2), 23, 29, 30, 31, 33, 36, 38, 39, 40, 45, & 53**



**WARRANTY**  
**1 YEAR LIMITED WARRANTY**

**THIS WARRANTY AND CONFIRMED RECEIPT(S) SHOULD BE RETAINED BY THE CUSTOMER AT ALL TIMES**

PURCHASED FROM: \_\_\_\_\_

DATE PURCHASED: \_\_\_\_\_

INVOICE/RECEIPT NUMBER: \_\_\_\_\_

Your ATD-5855 is warranted for a period of 12 months from the original purchase date.

For a period of one (1) year from your purchase date, ATD Tools, Inc. will repair or replace (at its option) without charge, your ATD product if it was purchased new and the product has failed due to a defect in material or workmanship which you experienced during normal use of the product. This limited warranty is your exclusive remedy.

To access the benefits of this warranty, contact your supplier, or point of sale directly. You may be advised to return the product under warranty, freight prepaid, to your supplier for warranty determination.

If this ATD product is altered, abused, misused, modified, or undergoes service by an unauthorized technician, your warranty will be void. We are not responsible for damage to ornamental designs you place on this ATD product and such ornamentation should not cover any warnings or instructions or they may void the warranty. This warranty does not cover scratches, superficial dents, and other abrasions to the paint finish that occur under normal use. It also does not cover normal wear items such as but not limited to brushes, batteries, drill bits, drill chucks, pads or blades.

Subject to the law in your state:

- (1) Your sole and exclusive remedy is repair or replacement of the defective product as described above.
- (2) ATD is not liable for any incidental damages, including but not limited to, lost profits and unforeseeable consequences.
- (3) The repair and replacement of this product under the express limited warranty described above is your exclusive remedy and is provided in lieu of all other warranties, express or implied. All other warranties, including implied warranties and warranties of merchantability or fitness for a particular purpose are disclaimed and, if disclaimer is prohibited, these warranties are limited to one year from your date of purchase of this product.

Some states' laws do not allow limited durations on certain implied warranties and some states' laws do not allow limitations on incidental or consequential damages. You should consult the law in your state to determine how your rights may vary.

[Affix receipt or invoice here for safe keeping]