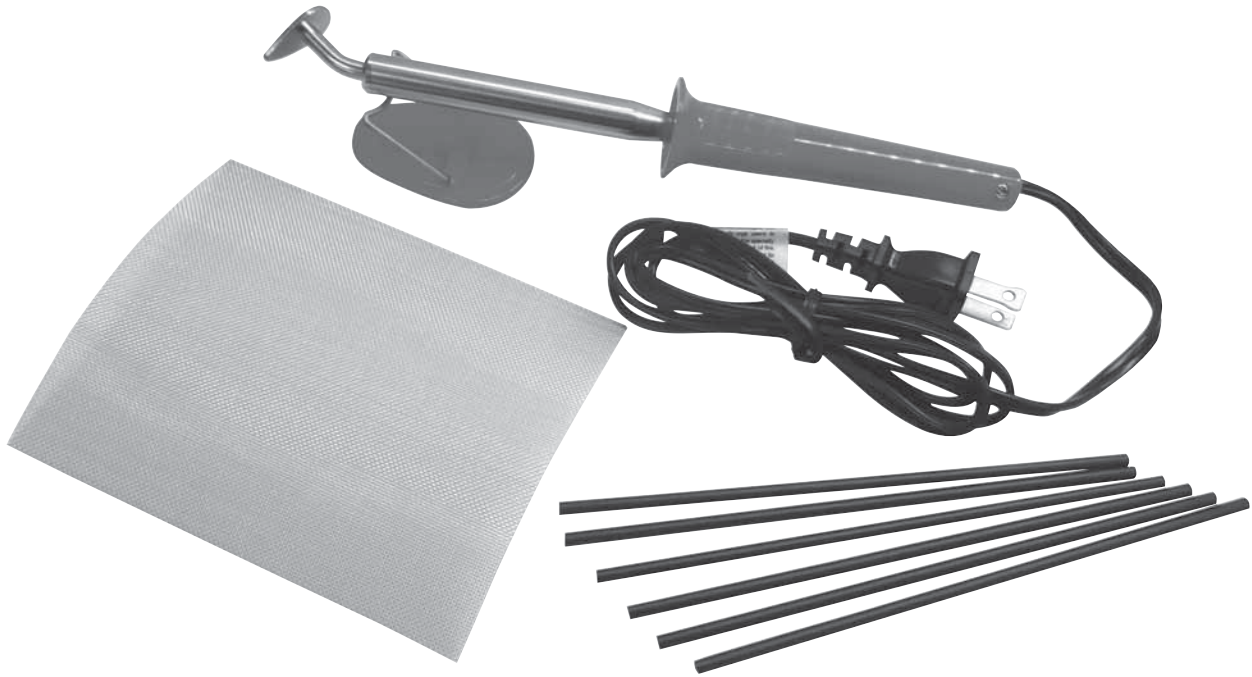




ATD-3760 Plastic Welding Kit Owner's Manual



Features:

- Used to repair cracked or broken plastic body panels and bumpers
- 110/120V AC, 50/60 Hz

Includes:

- Plastic Welding Iron
- Stainless Steel Mesh (5)
- Plastic Welding Rods for
 - Polypropylene (6)
 - Polyethylene (6)
 - Polystyrene (6)
 - Acrylonitrile butadiene styrene (ABS) (6)
- Plastic Welding Iron Stand



Made in Taiwan to ATD Tools, Inc. Specifications
Visit us at www.atdtools.com

ATD3760_rev_0217

SAFETY & HANDLING PRECAUTIONS

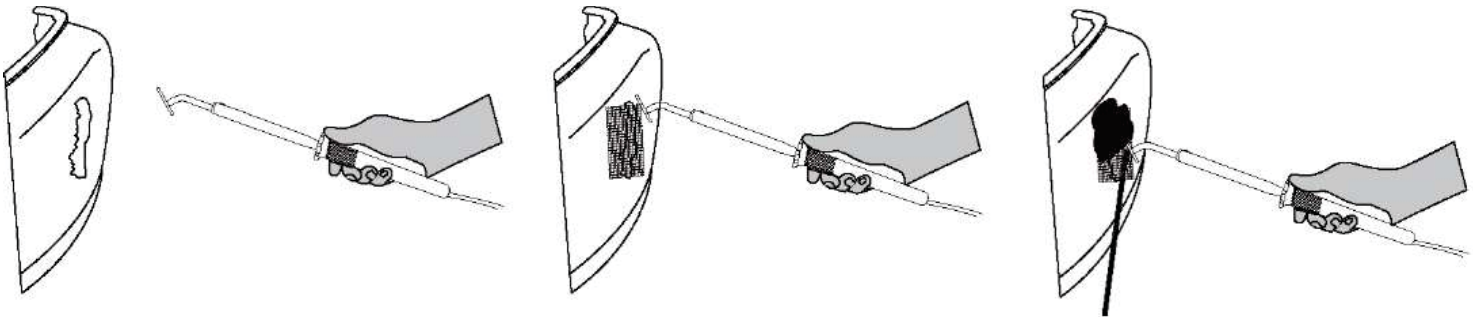
Once the welding iron is plugged in and the switch is turned on, the temperature will reach 660° - 930° F (348° to 498° C) Mishandling may cause, but is not limited to burns, blindness and/or fire.

WARNING

- Wear safety glasses and heat resistant gloves while using this welding iron.
- Keep long hair and clothing from coming into contact with the hot welding iron.
- Do not immerse this welding iron in water.
- Do not use in damp or wet locations.
- When repair is completed, turn the power off and make sure the welding iron is cool before moving or storing it.
- Repairing plastics creates high temperatures. Please be aware of potential burning from hot plastics as well.
- This product was designed for plastic repair. Do not use this product for any other use.
- This Plastic Welding Kit should be used with the original plastic welding rods and stainless steel mesh only. Use of any other products could yield unfavorable results.
- Never disassemble, there are no user serviceable parts inside.
- Unplug this unit after each use.
- When unplugging your welding iron, hold and pull the plug itself, do not unplug by pulling on the cord.

OPERATION

- Plug welding iron into 110/120V AC outlet.
- Welding Iron will take about 5 minutes to reach operating temperature. Place the iron on it's stand on a flat surface while it heats up to prevent any accidental burning. Do NOT touch any part of the iron besides the handle or cord.
- Cut the stainless steel mesh to the proper size and shape required by your specific job.
- Melt the steel mesh into the area being repaired until the parent material can be seen penetrating the mesh.
- Melt the plastic filler rod into the surface of the mesh and into the edges of the repair. To cover the repair, build up the repair to the required depth.
- Allow the repaired area to cool completely. Where required, the repaired area can now be sanded for finishing.



PARTS LIST

- ATD-3760 Plastic Welding Kit
- ATD-3761 Stainless Steel Mesh
- ATD-3762 Plastic Welding Rod - PP (Polypropylene)
- ATD-3763 Plastic Welding Rod - PE (Polyethylene)
- ATD-3764 Plastic Welding Rod - PS (Polystyrene)
- ATD-3765 Plastic Welding Rod - ABS (Acrylonitrile butadiene styrene)



WARRANTY

1 YEAR LIMITED WARRANTY

THIS WARRANTY AND CONFIRMED RECEIPT(S) SHOULD BE RETAINED BY THE CUSTOMER AT ALL TIMES

PURCHASED FROM: _____

DATE PURCHASED: _____

INVOICE/RECEIPT NUMBER: _____

Your ATD-3760 is warranted for a period of 12 months from the original purchase date.

For a period of one (1) year from your purchase date, ATD Tools Inc. will repair or replace (at its option) without charge, your ATD product if it was purchased new and the product has failed due to a defect in material or workmanship which you experienced during normal use of the product. This limited warranty is your exclusive remedy.

To access the benefits of this warranty, contact your supplier, or point of sale directly. You may be advised to return the product under warranty, freight prepaid, to your supplier for warranty determination.

If this ATD product is altered, abused, misused, modified, or undergoes service by an unauthorized technician, your warranty will be void. We are not responsible for damage to ornamental designs you place on this ATD product and such ornamentation should not cover any warnings or instructions or they may void the warranty. This warranty does not cover scratches, superficial dents, and other abrasions to the paint finish that occur under normal use. It also does not cover normal wear items such as but not limited to brushes, batteries, drill bits, drill chucks, pads or blades.

Subject to the law in your state:

- (1) Your sole and exclusive remedy is repair or replacement of the defective product as described above.
- (2) ATD is not liable for any incidental damages, including but not limited to, lost profits and unforeseeable consequences.
- (3) The repair and replacement of this product under the express limited warranty described above is your exclusive remedy and is provided in lieu of all other warranties, express or implied. All other warranties, including implied warranties and warranties of merchantability or fitness for a particular purpose are disclaimed and, if disclaimer is prohibited, these warranties are limited to one year from your date of purchase of this product.

Some states' laws do not allow limited durations on certain implied warranties and some states' laws do not allow limitations on incidental or consequential damages. You should consult the law in your state to determine how your rights may vary.

[Affix receipt or invoice here for safe keeping]