



ATD-3736 Dual Temperature Heat Gun Kit Owner's Manual



Features:

- Great for stripping paint, removing decals and stripes, shrinking wire wrap, etc.
- (2) Heat settings: 700° F and 925° F
- Wattage: 1000W (low setting) 1500W (high setting)
- Three-position rocker switch: high/off/low
- UL & cUL listed

Set Includes:

- Dual temperature Heat Gun
- Reduction nozzle
- Reflector nozzle
- Large deflector nozzle
- Small deflector nozzle
- Molded plastic storage case

CAREFULLY READ THROUGH THIS ENTIRE MANUAL BEFORE USING THIS HEAT GUN.

If you use this unit properly and only for what it is intended for, you will enjoy years of safe, reliable service.

Table of Contents:

Section	Page(s)
Technical Data -----	1
Jobs for your ATD-3736 Heat Gun -----	1
Cautions -----	2
Specific Safety Rules for this Heat Gun -----	3
Electrical Information -----	4-5
Heat Gun Assembly and Nomenclature -----	6-7
Operating Instructions -----	7-9
Maintenance -----	10
Replacement Parts -----	11
Warranty -----	12

Technical Data:

- **Power Requirements:** 120 V AC, 60HZ, 8/12.5A
- **Wattage:** 1000W Low / 1500W High
- **Heat Setting Temperatures:** High 923° F (495° C), Low 707° F (375° C)
- **Cord:** 6' (186cm), 2-prong, polarized plug
- **Net Weight:** 1 lbs. (0.73kg)

Jobs for your ATD-3736 Heat Gun:

1. Remove paint and varnish
2. Remove adhesive stickers and trim
3. Loosen rusted or overtightened nuts, bolts and screws
4. Thaw frozen metal pipes, door locks and padlocks. **DO NOT** attempt to thaw plastic pipes
5. Highlight the natural wood grain of wooden surfaces before staining
6. Quickly dry paints and varnish. This is especially useful when color matching is required by adding several coats of paint or varnish.
7. Soften old putty before removal
8. Dry out wet, damaged wood prior to filling with compound
9. Shrink PVC shrink wrap sheeting for package protection
10. Wax and de-wax skis
11. Shrink heat shrink tubing for electrical connections
12. Aid in application of vinyl decals that need to be bent around a surface
13. Bending plastic and metal
14. Soldering electronic components by providing controlled heat to melt solder
15. Weld or fuse plastic parts together by softening the material at the joint
16. DIY/craft projects such as embossing, molding plastics, or shaping materials like foam
17. Remove wrinkles from fabrics by gently applying heat and smoothing them out
18. Heating and sealing seams on roofing membranes or for softening asphalt shingles during installation or repair

Cautions:

WARNING: TO AVOID MISTAKES THAT COULD CAUSE SERIOUS INJURY, DO NOT PLUG THE HEAT GUN IN UNTIL THE FOLLOWING STEPS HAVE BEEN READ AND UNDERSTOOD.



CAUTION:

1. **READ** and become familiar with this entire instruction manual. **LEARN** the tool's applications, limitations and possible hazards.
2. **AVOID DANGEROUS CONDITIONS. DO NOT** use power tools in wet or damp areas or expose them to rain. Keep work areas well-lit.
3. **DO NOT** use power tools in the presence of flammable liquids or gasses.
4. **ALWAYS** keep your work area clean, uncluttered and well-lit. **DO NOT** work on floor surfaces that are slippery.
5. **KEEP BYSTANDERS AT A SAFE DISTANCE** from the work area, especially when the tool is operating. **NEVER** allow children near the tool.
6. **DO NOT FORCE THE TOOL** to do a job for which it was not designed.
7. **DRESS FOR SAFETY. DO NOT** wear loose clothing, gloves, neckties or jewelry (rings, watches) when operating the tool, they can get caught and drive you into moving parts. **ALWAYS** wear non-slip footwear and tie back long hair.
8. **WEAR A DUST RESPIRATOR DURING OPERATION.**
9. **ALWAYS** remove power cord from the electrical outlet when making adjustments, changing parts or cleaning or working on the tool.
10. **AVOID ACCIDENTAL START-UPS.** Make sure power switch is in the OFF position before plugging in the power cord.
11. **REMOVE ADJUSTING TOOLS.** Always make sure all tools are removed from the Heat Gun before turning it on.
12. **NEVER LEAVE A RUNNING TOOL UNATTENDED.** Turn the power switch to OFF.
13. **DO NOT OVERREACH.** Keep proper footing and balance at all times. Wear oil-resistant, rubber soled footwear. Keep floor clean and free of debris.
14. **MAINTAIN TOOLS PROPERLY.** Always keep tools clean and in good working order. Follow instructions for lubricating and changing accessories.
15. **CHECK FOR DAMAGED PARTS.** Check for alignment of moving parts, jamming, breakage, or any other conditions that may affect the tool's operation. Any part that is damaged should be properly repaired or replaced before use.
16. **MAKE WORKSHOP CHILDPROOF.** Use padlocks, master switches and always remove starter keys.
17. **DO NOT** operate tool if you are under the influence of any drugs, alcohol or medication that could affect your ability to use the tool properly.
18. Take extreme care when stripping paint. The peelings, residue and vapors of paint may contain lead, which is poisonous. To reduce your exposure to these chemicals, work in a well-ventilated area, and work with approved safety equipment such as dust masks or respirators.

SPECIFIC SAFETY RULES FOR THIS HEAT GUN

SAVE THESE SAFETY INSTRUCTIONS



ALWAYS WEAR EYE PROTECTION

A Heat Gun can throw foreign objects into your eyes, which could cause permanent eye damage.

ALWAYS wear safety goggles (not glasses) as ordinary eyeglasses have only impact resistant lenses.
EYEGASSES ARE NOT SAFETY GOGGLES.

1. **WEAR GLOVES AND EYE PROTECTION.** The Heat Gun nozzle becomes extremely hot during use.
2. **NEVER** use Heat Gun as a hair dryer.
3. **NEVER** direct the hot airflow towards people or animals.
4. **NEVER** use the Heat Gun near flammable materials or gases.
5. **NEVER** obstruct the hot airflow by blocking or covering the air outlet.
6. **NEVER** touch the nozzle to any surface when operating the Heat Gun or immediately after using the Heat Gun. Wait until the nozzle has cooled.
7. **ALWAYS** keep Heat Gun handle dry, clean and free from oil and grease.
8. **DO NOT** force the Heat Gun to perform any task that it's not designed to do.
9. **ALWAYS** place the Heat Gun in an upright position or hang from its hanger.
10. **NEVER** use the Heat Gun in wet environments or areas of high humidity, such as a bathroom or steam room.
11. **NEVER** insert anything inside the nozzle of the Heat Gun.
12. **ALWAYS** store the Heat Gun in a safe place, out of reach of children.
13. **KNOW THE WORK AREA.** Areas behind ceilings, floors and soffits can contain highly flammable material. **ALWAYS** check these areas before applying heat.
14. **GUARD AGAINST ELECTRIC SHOCK** by preventing contact with grounded surfaces such as pipes, radiators, or grounded appliances.
15. **SECURE** small or irregular shaped objects in a vice when applying heat.

ELECTRICAL INFORMATION

WARNING: TO AVOID ELECTRICAL HAZARDS, FIRE HAZARDS OR DAMAGE TO THE TOOL, USE PROPER CIRCUIT PROTECTION. YOUR HEAT GUN IS WIRED AT THE FACTORY FOR 120 VAC OPERATION. CONNECT TO A 120 V, 5A CIRCUIT AND USE A 15A TIME DELAY FUSE CIRCUIT BREAKER. TO AVOID SHOCK OR FIRE, IF POWER CORD IS WORN, CUT OR DAMAGED IN ANY WAY, HAVE IT REPLACED IMMEDIATELY.

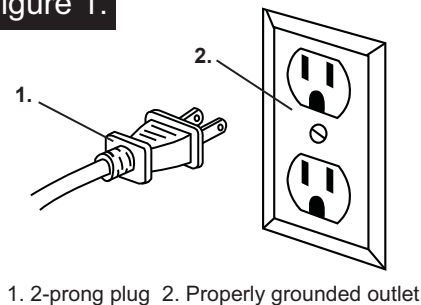
DOUBLE INSULATED

This Heat Gun has a plug that looks like the one shown in figure 1.

The Heat Gun is double insulated to provide a double thickness of insulation between you and the tool's electrical system. All exposed metal parts are isolated from the internal metal motor components with protective insulation.



Figure 1.



WARNING: TO AVOID INJURY WHEN SERVICING THE HEAT GUN USE ONLY IDENTICAL REPLACEMENT PARTS

WARNING: DOUBLE INSULATION DOES NOT TAKE THE PLACE OF NORMAL SAFETY PRECAUTIONS WHEN OPERATING THIS HEAT GUN.


WARNING: TO AVOID ELECTROCUTION:

1. Use only identical replacement parts when servicing a tool with double insulation. Servicing should be performed by a qualified technician.
2. Do not use power tools in wet or damp areas or expose them to rain. This Heat Gun is intended for indoor use only. If you need to use the Heat Gun on a piece outdoors, ensure proper ventilation and proper weather conditions. Take necessary precautions to avoid any potential risks such as fire or overheating.

GROUNDING INSTRUCTIONS: In the event of a malfunction or breakdown, grounding provides the path of least resistance for electrical current and reduces the risk of polarized shock. This Heat Gun is equipped with an electrical cord that has a polarized plug. This plug **MUST** be plugged into a matching outlet that is properly installed and grounded in accordance with ALL local codes and ordinances.

DO NOT MODIFY THE PLUG PROVIDED. If it will not fit the outlet, have the proper outlet installed by a qualified electrician.

ELECTRICAL INFORMATION (CONTINUED)

 **CAUTION:** IN ALL CASES, MAKE CERTAIN THE RECEPTACLE IN QUESTION IS PROPERLY GROUNDED. IF YOU ARE NOT SURE IF IT IS, HAVE A CERTIFIED ELECTRICIAN CHECK THE RECEPTACLE.

WARNING: THIS HEAT GUN IS FOR INDOOR USE ONLY. DO NOT EXPOSE TO RAIN OR USE IN DAMP LOCATIONS.

GUIDELINES FOR USING EXTENSION CORDS

USE THE PROPER EXTENSION CORD. Make sure your extension cord is in good condition. When using an extension cord, be sure to use one heavy enough to carry the current your product will draw. An undersized cord will cause overheating. The table below shows the correct size to use depending in cord length and nameplate ampere rating. If in doubt, use the heavier gauge. The smaller the number, the heavier the cord.

MINIMUM GAUGE FOR EXTENSION CORDS (AWG) WHEN USING 120 V ONLY

AMPERE RATING		TOTAL LENGTH OF CORD IN FEET (METERS)			
MORE THAN	NOT MORE THAN	25' (7.6m)	50' (15m)	100' (30.4m)	150' (45.7m)
0	6	18	16	16	14
6	10	18	16	14	12
10	12	16	16	14	12
12	16	14	12	NOT RECOMMENDED	

Inspect the cord: Before each use, check the cord for any signs of damage such as fraying, cuts, or exposed wires. Do not use a damaged cord, as it can pose a safety hazard.

Proper placement: Do not run extension cords under rugs or furniture, as this can cause them to overheat and create a fire hazard. Avoid placing cords in high traffic areas where they can be tripped over.

Avoid overloading: Do not plug too many devices into a single extension cord or outlet. Overloading can cause the cord to overheat and potentially start a fire. Follow the manufacturer's guidelines for maximum wattage and current ratings.

Unplug when not in use: When you are finished using the extension cord, unplug it from the outlet. Leaving cords plugged in unnecessarily can increase the risk of overheating and electrical fires.

Do not modify: Do not alter or modify extension cords in any way, as this can compromise their safety. Avoid using adapters or "cheater plugs" to connect multiple cords together.

Keep away from water: Do not use extension cords in wet or damp conditions, as this can increase the risk of electric shock. If you need to use a cord outdoors, make sure it is specifically rated for outdoor use.

WARNING: ALTHOUGH THIS TOOL IS DOUBLE INSULATED, THE EXTENSION CORD AND RECEPTACLE MUST STILL BE GROUNDED WHILE IN USE TO PROTECT THE OPERATOR FROM ELECTRICAL SHOCK.

HEAT GUN ASSEMBLY AND NOMENCLATURE

THIS HEAT GUN COMES ASSEMBLED FOR IMMEDIATE USE.

Remove the Heat Gun from the carton, separate from packing material and examine carefully before use.

If any part of the Heat Gun is missing or broken, **DO NOT** plug the unit in or attempt to use it in any manner until the damaged part is repaired or replaced.

Your ATD-3736 Heat Gun is for softening and removing paint/varnish, floor/wall tiles, thawing frozen pipes (not plastic), frozen door locks, padlocks, stripping paint from windows, softening old putty and more.



1. Cool Air Intake
2. Hanger
3. LOW/OFF/HIGH trigger switch
4. Heat Guard
5. Nozzle

WARNING: TO AVOID INJURY, ALWAYS TURN OFF THE SWITCH AND DISCONNECT THE POWER CORD FROM THE OUTLET BEFORE INSTALLING OR CHANGING ANY HEAT GUN ACCESSORIES.

LOW/OFF/HIGH trigger switch

The trigger switch (3) allows for LOW (-) or HIGH (=) working temperature settings. Depending on the amount of heat required for an operation, choose the LOW (-) setting, which is roughly 707°F or the HIGH (=) setting, which is roughly 923°F.

Always allow a minute or so for it to reach its full operating temperature.

When not using the Heat Gun, position the trigger to the OFF (0) position.



HEAT GUN ASSEMBLY AND NOMENCLATURE (CONTINUED)

OUTLET NOZZLES




There are four different outlet nozzles, as pictured above, supplied with your ATD-3736 Heat Gun to provide different results for different jobs. Choose the outlet nozzle that works best for your particular task.

 **CAUTION:** NEVER CHANGE THE OUTLET NOZZLE IMMEDIATELY AFTER USING THE HEAT GUN. LET THE OUTLET NOZZLE COOL BEFORE ATTEMPTING REMOVAL

OPERATING INSTRUCTIONS

NOTE: This Heat Gun is designed to remove oil and latex based paints and varnish. It will not remove stains or primer coats that have impregnated the surface of the wood.

 **CAUTION:** LEAD BASED PAINT FUMES ARE VERY HARMFUL. ALWAYS PROVIDE ADEQUATE VENTILATION WHILE WORKING INDOORS.

WARNING: EXTREME CARE MUST BE TAKEN WHEN STRIPPING PAINT. THE PAINT PEELINGS, RESIDUE AND VAPORS MAY CONTAIN LEAD, WHICH IS POISONOUS. ANY PRE 1977 PAINT MAY CONTAIN LEAD AND PAINT APPLIED TO HOMES PRIOR TO 1950 IS LIKELY TO CONTAIN LEAD. ONCE APPLIED ON SURFACES, HAND-TO-MOUTH CONTACT CAN RESULT IN THE INGESTION OF LEAD. EXPOSURE TO LEAD, EVEN AT LOW LEVELS CAN CAUSE IRREVERSIBLE BRAIN AND NERVOUS SYSTEM DAMAGE; YOUNG AND UNBORN CHILDREN ARE PARTICULARLY VULNERABLE.

Before beginning any paint removal process, you should determine whether the paint you are removing contains lead. This can be done at your local health department, or by a professional who uses a paint analyzer to check the lead content. Lead-based paint should only be removed by a professional.

DO NOT remove lead based paint using a Heat Gun.

OPERATING INSTRUCTIONS (CONTINUED)

Persons removing paint should follow these guidelines:

1. **MOVE THE WORK PIECE OUTDOORS.** If this isn't possible, keep the work area well ventilated. Open the windows and put an exhaust fan in the window. Make sure the fan is moving the air from the inside to the outside.
2. **REMOVE OR COVER** carpet, rugs, furniture, clothing, cooking utensils and air ducts.
3. **PLACE DROP CLOTHS IN THE WORK AREA** to catch paint chips or peelings. Wear protective clothing such as extra, long sleeve work shirts, overalls and hats.
4. **WORK IN ONE ROOM AT A TIME.** Furnishings should be removed or placed in the center of the room, covered. Work areas should be sealed off from the rest of the dwelling by sealing doorways with drop cloths.
5. **CHILDREN, PREGNANT OR POTENTIALLY PREGNANT WOMEN AND NURSING MOTHERS SHOULD NOT BE PRESENT** in the work area until all the work is finished and cleanup is complete.
6. **WEAR A DUST RESPIRATOR** or a dual filter (dust and fume) respirator that has been approved by OSHA. Make sure the mask fits properly; beards and facial hair may keep masks from sealing properly. Change filters often. **DISPOSABLE MASKS ARE NOT ADEQUATE.**
7. **USE CAUTION WHEN OPERATING THE HEAT GUN.** Keep the gun moving. Excessive heat will generate fumes that can be inhaled by the operator.
8. **KEEP FOOD AND DRINK OUT OF THE WORK AREA.** Wash hands, arms, face and mouth before eating and drinking. Do not smoke or chew gum or tobacco while in the work area.
9. **CLEAN UP** all removed paint and dust by wet mopping the floors. Use a wet cloth to clean all walls, sills and any other surface where paint or dust has settled. **DO NOT SWEEP, DUST OR VACUUM.** Use a high phosphate detergent or trisodium phosphate (TSP) to wash and mop areas.
10. **AT THE END OF EACH WORK SESSION,** put the paint chips and debris in a double plastic bag. Seal the bag with tape or twist ties, and dispose of properly.
11. **REMOVE PROTECTIVE CLOTHING AND WORK SHOES IN THE WORK AREA** to prevent carrying dust into the rest of the dwelling. Wash work clothes separately. Wipe shoes off with a wet rag, wash the rag with the work clothes. Wash hair and body thoroughly with soap and water.

OPERATING INSTRUCTIONS (CONTINUED)

PAINT AND VARNISH REMOVAL

Paint and varnish removal requires some practice. Always test your results on a small section of paint before moving to larger areas.

Turn on the Heat Gun and allow it to reach full power. Hold the nozzle 3 to 4" (7.6 to 10.2cm) from the paint to be removed. After a short time, the paint will soften and begin to blister. **DO NOT** overheat the paint; this will cause burning and make it more difficult to remove. When stripping paint overhead, **ALWAYS** use eye protection, and wear clothing that will protect your skin.

Using scrapers, begin scraping the paint off of the wood, working from top to bottom. Scrape with smooth, even strokes, warming the surface in front of the Heat Gun by moving the Heat Gun slightly from side to side. If paint is warmed properly, even thick layers can be removed in a single pass. Paint should come off in a strip equal to the width of your scraper blade.

Clean the edge of the scraper blade often to keep it clean and sharp, and to prevent paint buildup on the blade. Scrape the paint as soon as it softens as it will quickly harden again.

Cover all surfaces that are not to be heated with non-flammable material. **NEVER** concentrate the Heat Gun's heat on a window panel other than glass. For glass windows, be sure to heat the whole surface evenly, before directing at your work piece, to avoid breakage.

MAINTENANCE

WARNING: TO AVOID INJURY, ALWAYS TURN OFF THE SWITCH AND DISCONNECT THE POWER CORD FROM THE OUTLET BEFORE MAINTAINING THE HEAT GUN.

GENERAL MAINTENANCE

Keep your Heat Gun clean and in good repair for maximum performance and longevity. Before each use inspect your Heat Gun, switch and cord for damage. Check for damaged, missing or worn parts. Check for loose screws, misalignment or binding moving parts, or any other conditions that may affect the operation of your Heat Gun's operation. If abnormal vibration or noise occurs, turn off and unplug the Heat Gun immediately and have the problem corrected before further use. **DO NOT** use the tool until it is properly repaired or replaced.

CLEANING

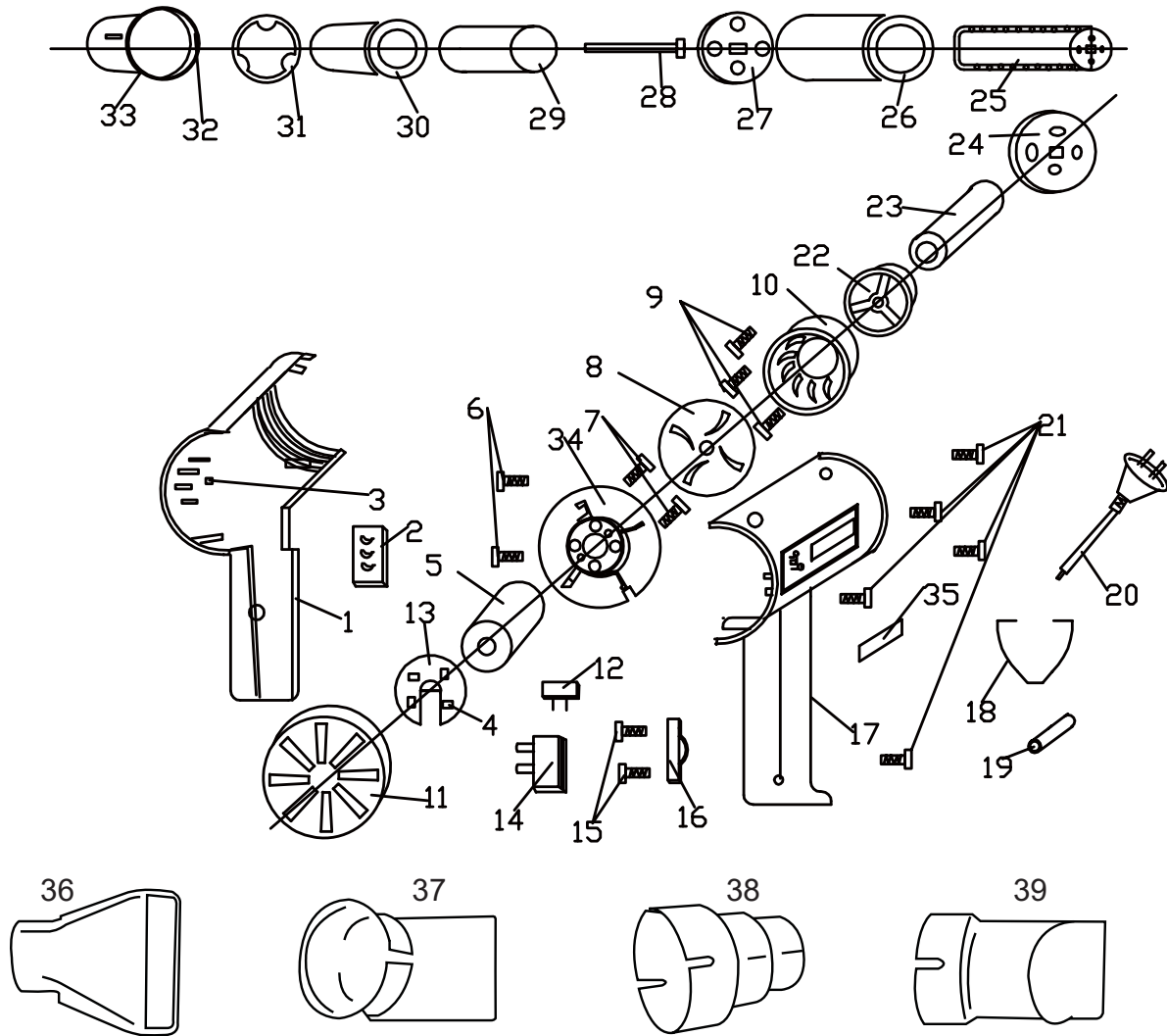
Frequently blow dust out of the motor area using an air compressor or vacuum. Keep the Heat Gun clean and free of oil and grease. Use only a mild soap and damp cloth to clean your Heat Gun. Certain cleaning agents and solvents are harmful to plastic and insulated parts. **DO NOT** use gasoline, turpentine, lacquer thinner, paint thinner or chlorinated cleaning solvents, including household cleaners containing ammonia.

WARNING: TO AVOID FIRE OR TOXIC REACTION, DO NOT USE GASOLINE, NAPHTHA, ACETONE LACQUER THINNER OR SIMILARLY HIGHLY VOLATILE SOLVENTS TO CLEAN YOUR HEAT GUN.

WARNING: TO AVOID INJURY, ELECTRIC SHOCK, OR DAMAGE TO YOUR HEAT GUN, NEVER IMMERSE YOUR HEAT GUN IN LIQUID, OR ALLOW LIQUID TO FLOW INSIDE OF IT.

REPLACEMENT PARTS

Not all components of this product are replacement items, but are illustrated as a convenient reference for position in the assembly sequence. When ordering parts, give model number, part number and description. Call your distributor for current pricing:



ITEM#	ORDERING PART#	PART DESCRIPTION
1	PRT3736-01	LEFT HOUSING
2	PRT3735-19	SWITCH
3	PRT3736-03	SHOCK PROOF PAD
4	PRT3736-04	PCB ASSY
5	PRT3736-05	MOTOR RS 365SH
6	PRT3736-06-33	SCREW SET
7	PRT3736-06-33	SCREW SET
8	PRT3736-08	FAN
9	PRT3736-06-33	SCREW SET
10	PRT3736-10	WIND HOOD
11	PRT3736-11	REGULATOR
12	PRT3736-04	PCB ASSY
13	PRT3736-04	PCB ASSY
14	PRT3736-14	WIRE CONDUCTOR
15	PRT3736-06-33	SCREW SET
16	PRT3736-16	WIRE STRAIN PLATE
17	PRT3736-17	RIGHT HOUSING
18	PRT3736-18	RING
19	PRT3736-19	SHEATH
20	PRT3736-20	POWER CORD

ITEM#	ORDERING PART#	PART DESCRIPTION
21	PRT3736-06-33	SCREW SET
22	PRT3736-22	FIX SLEEVE
23	PRT3736-23	CERAMIC TUBE
24	PRT3736-24	COVER
25	PRT3735-04	HEATING ELEMENT
26	PRT3736-26	CERAMIC TUBE
27	PRT3736-27	WASHER
28	PRT3736-28	CONNECTOR PIECE
29	PRT3736-29	MICA PAPER
30	PRT3736-30-31	WIND TUBE ASSY
31	PRT3736-30-31	WIND TUBE ASSY
32	PRT3736-32	WIND TUBE SHEATH
33	PRT3736-06-33	SCREW SET
34	PRT3736-34	MOTOR SUPPORT
35	PRT3736-35	BRAND
36	PRT3736-36	FLATTEN DISCHARGE OUTLET
37	PRT3736-37	45 DEGREE DISCHARGE
38	PRT3736-38	DIAMETER REDUCER OUTLET
39	PRT3736-39	ECCENTRIC DISCHARGE
n/s	PRT3736-CASE	BLOW MOLDED CASE



WARRANTY

1 YEAR LIMITED WARRANTY

THIS WARRANTY AND CONFIRMED RECEIPT(S) SHOULD BE RETAINED BY THE CUSTOMER AT ALL TIMES

PURCHASED FROM: _____

DATE PURCHASED: _____

INVOICE/RECEIPT NUMBER: _____

Your ATD-3736 is warranted for a period of 12 months from the original purchase date.

For a period of one (1) year from your purchase date, ATD Tools Inc. will repair or replace (at its option) without charge, your ATD product if it was purchased new and the product has failed due to a defect in material or workmanship which you experienced during normal use of the product. This limited warranty is your exclusive remedy.

To access the benefits of this warranty, contact your supplier, or point of sale directly. You may be advised to return the product under warranty, freight prepaid, to your supplier for warranty determination.

If this ATD product is altered, abused, misused, modified, or undergoes service by an unauthorized technician, your warranty will be void. We are not responsible for damage to ornamental designs you place on this ATD product and such ornamentation should not cover any warnings or instructions or they may void the warranty. This warranty does not cover scratches, superficial dents, and other abrasions to the paint finish that occur under normal use. It also does not cover normal wear items such as but not limited to brushes, batteries, drill bits, drill chucks, pads or blades.

Subject to the law in your state:

- (1) Your sole and exclusive remedy is repair or replacement of the defective product as described above.
- (2) ATD is not liable for any incidental damages, including but not limited to, lost profits and unforeseeable consequences.
- (3) The repair and replacement of this product under the express limited warranty described above is your exclusive remedy and is provided in lieu of all other warranties, express or implied. All other warranties, including implied warranties and warranties of merchantability or fitness for a particular purpose are disclaimed and, if disclaimer is prohibited, these warranties are limited to one year from your date of purchase of this product.

Some states' laws do not allow limited durations on certain implied warranties and some states' laws do not allow limitations on incidental or consequential damages. You should consult the law in your state to determine how your rights may vary.

[Affix receipt or invoice here for safe keeping]