



ATD-31170 1/4" x 50' Retractable Dual Hose Welding Reel Owner's Manual



Features:

- Heavy gauge steel reel assembly
- Twin 1/4" x 50 ft. color coded grade R oxygen/acetylene hoses
- Solid brass fittings and connections with double O-ring seals for leak-free operation
- Heavy-duty spring driven, automatic rewind
- 8-position ratchet mechanism locks reel at desired hose length
- 5-position adjustable roller outlet arm and slotted mounting bolt holes allow easy reel mounting to ceilings, wall, floors, workbenches, vehicles, etc.
- Includes heavy-duty hose reel, twin color-coded welding hose and adjustable ball stop

Specifications:

- Hose: Twin 1/4" x 50 ft. color coded grade R welding hose
- Lead Hose: 40"
- Maximum Pressure: 200 psi

Save This Manual

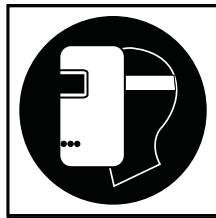
You will need the manual for the safety warnings and precautions, assembly instructions, operating and maintenance procedures, parts lists and diagram. Keep your invoice with this manual in a safe, dry place for future reference.

General Safety Warning and Precautions

WARNING: When using this reel, basic safety precautions should always be followed to reduce the risk of personal injury and damage to equipment.

Read all instructions before using this tool

1. Keep work area clean. Cluttered areas invite injuries.
2. Observe work area conditions. Do not use machines or power tools in damp or wet locations. Don't expose to rain. Keep work area well lighted. Do not use electric power tools in the presence of flammable gases or liquids.
3. Keep children away. Children must never be allowed in the work area. Do not let them handle machines, tools, extension cords or air hoses.
4. Store idle equipment. When not in use, tools must be stored in a dry location to inhibit rust. Always lock up tools and keep out of reach of children.
5. Welding produces arcs that can cause **BURNS** or **BLINDNESS**. Welding produces **FUMES** and **GASSES**. Dress properly and use eye, ear, and breathing protection. Always wear ANSI approved impact safety goggles. Wear a welding helmet featuring at least a number 10 shade lens rating. Wear an ANSI approved respirator when welding. Wear leather leggings and fire resistant shoes or boots while welding. Wear dry, insulating gloves and protective clothing. Wear an approved head covering to protect the head and neck. Use aprons, cape, sleeves, shoulder covers, and bibs designed and approved for welding procedures. When welding in confined spaces or overhead, wear flame resistant ear plugs or ear muffs.



7. Use the right tool for the job. Do not attempt to force a small tool or attachment to do the work of a larger industrial tool. There are certain applications for which this tool was designed. It will do the job better and more safely at the rate for which is intended. Do not modify this tool and do not use this tool for a purpose for which it is not intended. Only use this tool with oxygen and acetylene.
8. Do not overreach. Keep proper footing and balance at all times. Do not reach over or across running machines or hoses.
9. Maintain tools with care. Keep tools clean for better and safer performance. Follow instructions for lubricating and changing accessories. Inspect tool cords and air hoses periodically and, if damaged, have them repaired by an authorized technician. The hoses must be kept clean, dry, and free from oil and grease at all times.
10. Stay alert. Watch what you are doing, use common sense. Do not operate any tool when you are tired.
11. Check for damaged parts. Before using any tool, any part that appears damaged should be carefully checked to determine that it will operate properly and perform its intended function. Check for gas leaks; alignment and binding of moving parts; any broken parts or mounting fixtures; and any other condition that may affect proper operation. Any part that is damaged should be properly repaired or replaced by a qualified technician.
12. Replacement parts and accessories. When servicing, use only identical replacement parts. Parts should be properly repaired or replaced by a qualified technician. Use of any other parts will void the warranty. Only use accessories intended for use with this hose reel.

13. Do not operate tool if under the influence of alcohol or drugs. Read warning labels if taking prescription medicine to determine if your judgment or reflexes are impaired while taking drugs. If there is any doubt, do not operate the Hose Reel.
14. Maintenance and Repair. This Hose Reel has gas-tight parts and a powerful spring. Unskilled repair may make the reel hazardous or result in an accident causing severe injury or death. For your safety, maintenance and repairs should be performed regularly only by a qualified technician.
15. Industrial applications must follow OSHA guidelines.
16. **WARNING:** The warnings, cautions, and instructions discussed in this instruction manual cannot cover all possible conditions and situations that may occur. It must be understood by the operator that common sense and caution are factors which cannot be built into this product, but must be supplied by the operator.

Hose Reel Specific Safety Warnings

1. Read all of the instructions and safety warnings provided with your welding tanks, cutting torch, and given by the acetylene/oxygen distributor prior to operation. Also, read all of the instructions and safety precautions as outlined in the manufacturer's manual for the material you will weld or cut.

2. Risk of Fire and/or Explosion

Warning! Leaking Acetylene and Oxygen are extremely hazardous and may result in explosion and fire resulting in SERIOUS INJURY and DEATH.

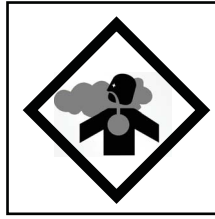
- Turn off gas supply when not in use.
- Working pressure on the acetylene regulator should NEVER be set above 15 psi.
- Always use reverse flow check valves on the torch and regulator. This greatly reduces the possibility of mixing gases in the regulator or hose.
- Don't direct the gas flame near the Hose, Hose Reel, or Tanks.
- Use regulators for both oxygen and acetylene. Connect oxygen and acetylene intake hoses correctly, following the manufacturer's safety guidelines. Make sure the incoming pressure does not exceed the maximum operating pressure of 200 psi.
- Locate the Hose Reel in a well ventilated area.



- Check for leakage periodically. If any leakage is found, immediately shut down and purge the system. Have the equipment repaired or replaced by an authorized service technician.
- When installing or replacing O-ring seals, only use silicon as a lubricant. Do not allow any grease or oil on or in the connections or hoses. These materials ignite and easily burn in the presence of oxygen.
- Secure cylinders to a car, wall, or post to prevent them from falling. All cylinders should be stored in an upright position. Never strike or drop a cylinder. Do not use dented cylinders. Cylinder caps should be used when moving or storing a cylinder.



- Avoid overexposure to fumes and gasses. Work in a ventilated area and do not breathe fumes. Use mechanical ventilation systems to improve air quality. Always use an approved respirator.



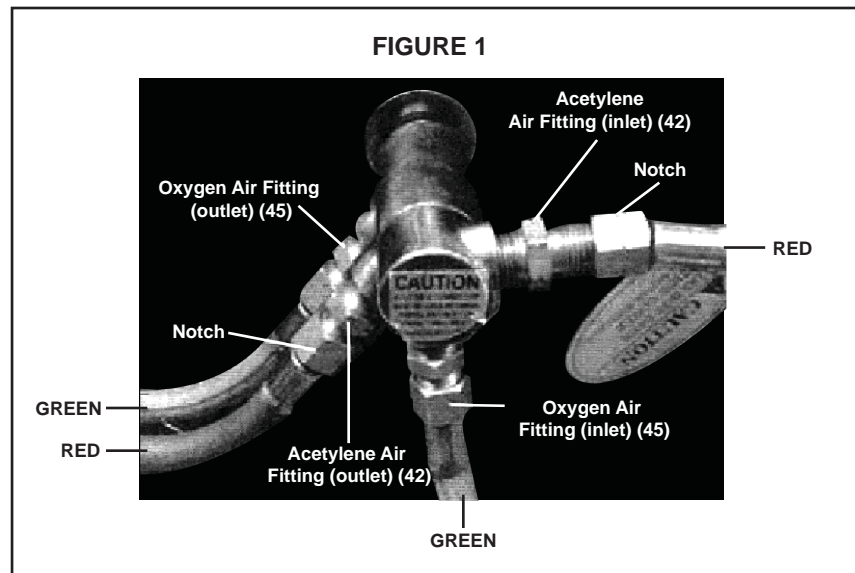
- When working with cylinders, always “crack” the cylinder valves by standing to one side and quickly opening and closing the valve, allowing gas to escape, clearing the valve of any foreign material. **If oil or grease is found, discontinue using the cylinder and immediately contact your supplier.**
- When attaching **GREEN** oxygen regulators (not included) to the oxygen cylinder, or **RED** acetylene regulators (not included) to the acetylene cylinder, make sure they are tightened in the correct directions (normally, clockwise for oxygen and counter-clockwise for acetylene)

Unpacking

When unpacking, check to make sure you have all the parts listed on the following page.

Warning: When connecting, make sure you connect RED acetylene hoses with notches (left-handed threads), to the connections with notches (left-handed threads). Connect the GREEN oxygen hoses without notches to the connections without notches. See **FIGURE 1**

BE SURE TO USE TEFLON (PTFE) TAPE ON ALL FITTINGS. THIS TAPE IS SUPPLIED WITH THE UNIT. FAILURE TO USE THIS TAPE WILL RESULT IN GAS LEAKS AND POTENTIAL EXPLOSIONS, FIRES, AND HEALTH PROBLEMS INCLUDING DEATH.



Installation

See **FIGURE 2** and the Assembly Drawing on the last page.

Note: For ceiling mounting, mount the Hose Reel high enough above the floor to avoid contact with people and equipment.

- Before attaching the Base(#1) to a wall or ceiling, make sure the mounting surface is capable of supporting the weight of the Hose Reel and hose, and can withstand the stress of pulling and retracting the hose.
- The Support Plate (#2) may be adjusted so that the Hoses (#47) leave the Reels on either side.

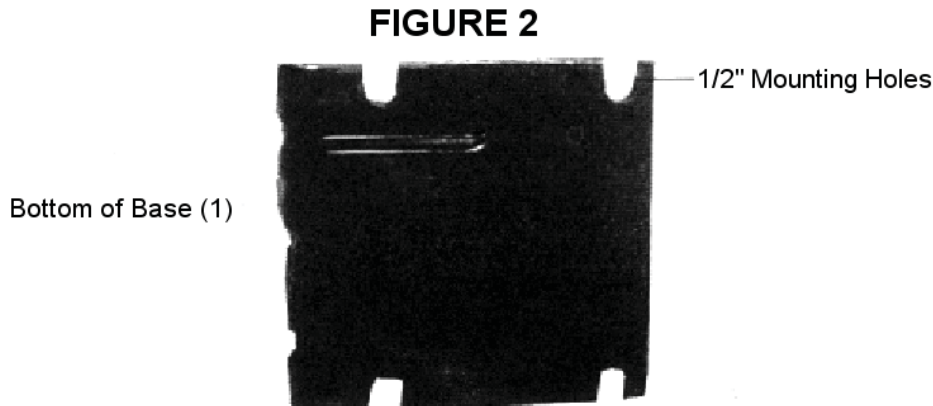
To change its position:

- Pull out some hose and let the reel latch (click and stop).
- Remove the Bolts (#12) that hold the Support Plate (#2) in place.
- Rotate the Support Plate (#2) into the correct position. Replace the Bolts (#12) and tighten.

Warning: Before attempting to drill into walls or ceilings, make sure no electrical wires or plumbing are in the way or behind the surface you are drilling into.

Make sure the mounting surface is solid. If going through sheet rock, it must have studs for the bolts to penetrate. Draw a rectangular template with ½" holes on center with a length of 6-1/4" and a width of 7-1/8". Before drilling match your template with the holes on the Base (#1). Pre-drill the holes. Secure the Base (#1) to the mounting surface with four ½" lag bolts (not included). Refer to **FIGURE 2**.

FIGURE 2.



When mounting on a wall, position these open holes
on the lower side (closest to the ground)

Operating the Hose Reel

1. Slowly pull out the Dual-Hose (#47). You will hear a clicking noise.
2. To latch or lock the Dual-Hose in place, pull it out at least 2 clicks, and then slowly allow it to retract to the previous click.
3. To unlatch or unlock the Dual-Hose, slowly pull the Dual-Hose until the clicking noise stops completely, then allow it to slowly and completely retract into the Hose Reel.

- **NEVER retract the Dual-Hose while the gas is on or the torch is lit.**
- **NEVER allow the Dual-Hose to retract quickly and without restraining the recoil speed.**
- **NEVER let go of the end of the Dual-Hose when it is rewinding.**

Maintenance

Warning - Always shut off and disconnect the gas tanks and regulators, and purge all gases from the system before attempting any maintenance.

Note: Always wear ANSI approved safety goggles during maintenance and make sure the Hose Reel is not connected to the acetylene tank and/or oxygen tanks.

Adjusting Spring Tension

1. Pull out 6 feet of Hose (#47) and allow the Drum (#27, #28) to latch.
2. Remove the Bumper Blocks (#48) by taking out the Screws (#49) and Nuts (#50).
3. Feed the Dual-Hose back through the Support Plate (#2).
4. To increase Hose tension, wrap the pulled Hose one time around the Drum (#27, #28). To decrease tension, unwrap the Hose one wrap from the Drum (#27, #28).
5. Reinsert the Dual-Hose through the Support Plate (#2) and reinstall the Bumper Blocks (#48) by replacing the Screw (#49) and Nuts (#50).
6. Check the tension by pulling out the Dual-Hose and releasing it.
7. If necessary, reposition the Bumper Blocks (#48) by taking out the Screws (#49) and Nuts (#50), changing their position and replacing the Screws (#49) and Nuts (#50).

Hose Replacement

See the Assembly Drawing on the last page.

Warning: Replace the Dual-Hose only with hoses intended for oxygen and acetylene welding:

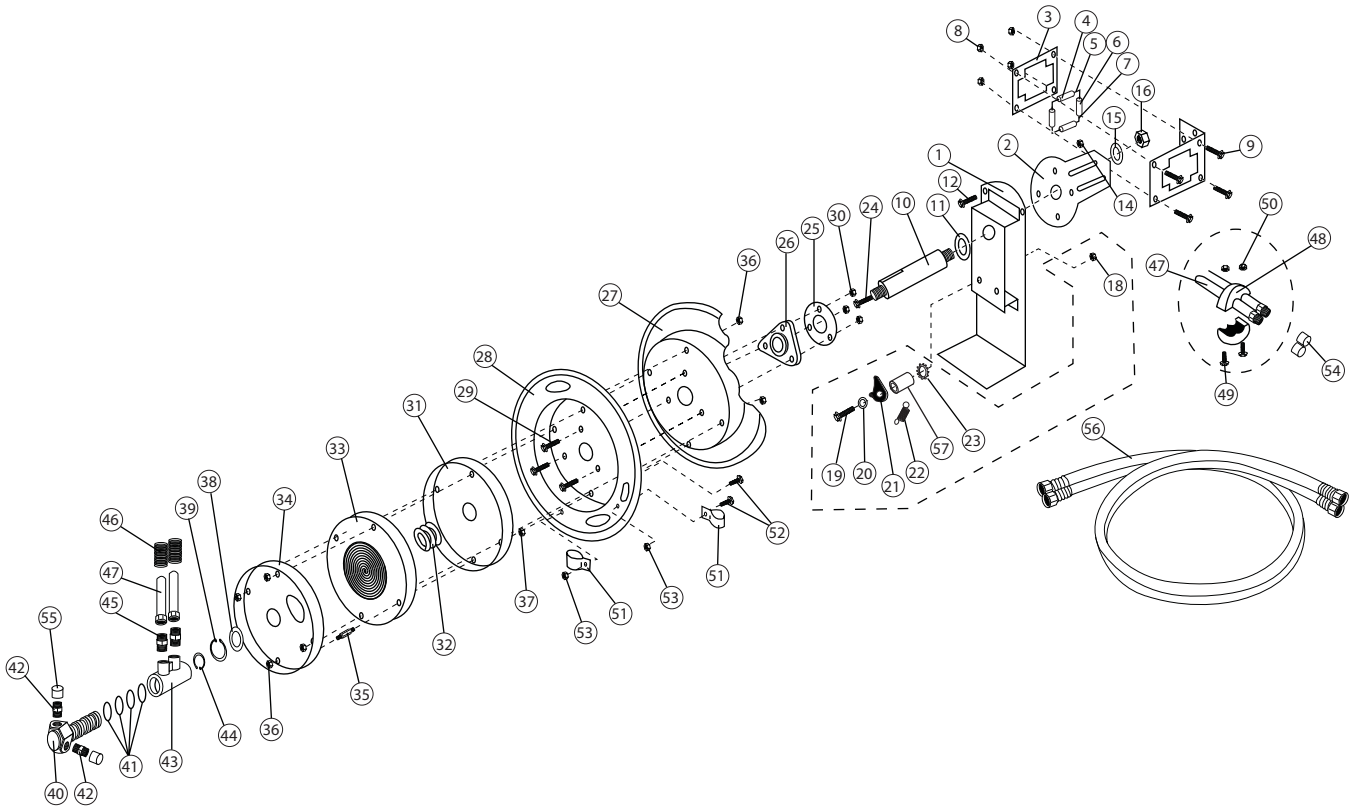
BE SURE TO USE TEFLON (PTFE) TAPE ON ALL FITTINGS. THIS TAPE IS SUPPLIED WITH THE UNIT. FAILURE TO USE THIS TAPE WILL RESULT IN GAS LEAKS AND POTENTIAL EXPLOSIONS, FIRES, AND HEALTH PROBLEMS UP TO AND INCLUDING DEATH.

1. Remove the Support Plate (#2) by removing the Bolts (#12).
2. Pull the Dual-Hose (#47) out to the final latched position. Make sure it is securely locked and cannot rotate back.
3. Remove the Clamp (#51) that attaches the Dual-Hose to the Drum (#28). Detach the Dual-Hose from the outlets (See **FIGURE 1**). Remove both Hose Protection Springs (#46).
4. Remove the old hose and remove the Bumper Blocks (#48), as explained above.
5. Feed the new hose through the guide on the Support Plate (#2) and the cut out on the Drum (#27, #28) flange. Replace the Hose Protection Springs (#46) and connect the hose to the outlets. Make sure to apply thread sealant or tape (not included) to the outlet threads. Reinstall the Clamp (#51) and Bumper Blocks (#48).
6. **Carefully and slowly**, release the Drum by **gently** pulling then releasing the locking ratchet. Then, **slowly** allow the Dual-Hose to retract onto the reel.

Note: If the Spring Canister needs repair or replacement, take the unit to an authorized service technician.



ATD-31170



ITEM#	ORDERING PART#	PART DESCRIPTION
1	PRT31170-01	BASE
2	PRT31170-02	SUPPORT PLATE
3	PRT31170-03-07	GUIDE BRACKET ASSY
4	PRT31170-03-07	GUIDE BRACKET ASSY
5	PRT31170-03-07	GUIDE BRACKET ASSY
6	PRT31170-03-07	GUIDE BRACKET ASSY
7	PRT31170-03-07	GUIDE BRACKET ASSY
8	PRT31170-08	NUT
9	PRT31170-09	SCREW
10	PRT31170-10	SHAFT
11	PRT31170-11	WASHER
12	PRT31170-12	BOLT
14	PRT31170-14	NUT
15	PRT31170-15	RETAINER
16	PRT31170-16	NUT
18	PRT31170-18-57	LOCKING ARM ASSEMBLY
19	PRT31170-18-57	LOCKING ARM ASSEMBLY
20	PRT31170-18-57	LOCKING ARM ASSEMBLY
21	PRT31170-18-57	LOCKING ARM ASSEMBLY
22	PRT31170-18-57	LOCKING ARM ASSEMBLY
23	PRT31170-18-57	LOCKING ARM ASSEMBLY
24	PRT31170-24	SCREW
25	PRT31170-25	LOCKING RING
26	PRT31170-26	ASSY.HUB BEARING
27	PRT31170-27	DRUM
28	PRT31170-28	DRUM
29	PRT31170-29	BOLT
30	PRT31170-30	NUT

ITEM#	ORDERING PART#	PART DESCRIPTION
31	PRT31170-31	SPRING DRUM
32	PRT31170-32	SPRING CORE
33	PRT31170-33	SPRING
34	PRT31170-34	SPRING DRUM
35	PRT31170-35	BOLT
36	PRT31170-36	NUT
37	PRT31170-37	NUT
38	PRT31170-38	WASHER
39	PRT31170-39	RETAINER
40	PRT31170-40-45	SWIVEL SPOOL ASSY
41	PRT31170-40-45	SWIVEL SPOOL ASSY
42	PRT31170-40-45	SWIVEL SPOOL ASSY
43	PRT31170-40-45	SWIVEL SPOOL ASSY
44	PRT31170-40-45	SWIVEL SPOOL ASSY
45	PRT31170-40-45	AIR FITTING (LH)
46	PRT31170-46	HOSE PROTECTION SPRING
47	PRT31170-47	DUAL-HOSE
48	PRT31170-48	HOSE STOP
49	PRT31170-49	SCREW
50	PRT31170-50	NUT
51	PRT31170-51	CLAMP
52	PRT31170-52	SCREW
53	PRT31170-53	NUT
54	PRT31170-56	COVER
55	PRT31170-56	COVER
56	PRT31170-56	LEAD HOSE W/COVERS 54 & 55
57	PRT31170-18-57	LOCKING ARM ASSEMBLY



WARRANTY

1 YEAR LIMITED WARRANTY

THIS WARRANTY AND CONFIRMED RECEIPT(S) SHOULD BE RETAINED BY THE CUSTOMER AT ALL TIMES

PURCHASED FROM: _____

DATE PURCHASED: _____

INVOICE/RECEIPT NUMBER: _____

Your ATD-31170 is warranted for a period of 12 months from the original purchase date.

For a period of one (1) year from your purchase date, ATD Tools Inc. will repair or replace (at its option) without charge, your ATD product if it was purchased new and the product has failed due to a defect in material or workmanship which you experienced during normal use of the product. This limited warranty is your exclusive remedy.

To access the benefits of this warranty, contact your supplier, or point of sale directly. You may be advised to return the product under warranty, freight prepaid, to your supplier for warranty determination.

If this ATD product is altered, abused, misused, modified, or undergoes service by an unauthorized technician, your warranty will be void. We are not responsible for damage to ornamental designs you place on this ATD product and such ornamentation should not cover any warnings or instructions or they may void the warranty. This warranty does not cover scratches, superficial dents, and other abrasions to the paint finish that occur under normal use. It also does not cover normal wear items such as but not limited to brushes, batteries, drill bits, drill chucks, pads or blades.

Subject to the law in your state:

- (1) Your sole and exclusive remedy is repair or replacement of the defective product as described above.
- (2) ATD is not liable for any incidental damages, including but not limited to, lost profits and unforeseeable consequences.
- (3) The repair and replacement of this product under the express limited warranty described above is your exclusive remedy and is provided in lieu of all other warranties, express or implied. All other warranties, including implied warranties and warranties of merchantability or fitness for a particular purpose are disclaimed and, if disclaimer is prohibited, these warranties are limited to one year from your date of purchase of this product.

Some states' laws do not allow limited durations on certain implied warranties and some states' laws do not allow limitations on incidental or consequential damages. You should consult the law in your state to determine how your rights may vary.

[Affix receipt or invoice here for safe keeping]