



# ATD-30321

## 20" Tilting Pedestal Drum Fan

### Owner's Manual



#### Features:

- Three speed energy efficient motor
- Balanced aluminum 5-blade design provides even airflow and quiet operation
- Durable ball bearing motor
- Automatic shut-off feature prevents overheating
- Durable black powder coating finish
- Adjustable fan height
- Rotary switch
- 5 ft. grounded cord

#### Specifications:

- 120V/60Hz/150W
- 1/5 Hp Motor
- Up to 6,250 CFM
- cETL listed
- One-Year Limited Warranty

## **Intended Use:**

This product is intended for indoor residential, office, industrial, or other commercial applications. Use only with electrical wiring that is in good working order and that meets applicable codes and ordinances. If you have any questions whether your wiring is adequate, consult a qualified electrician.

While using your fan, you should follow the IMPORTANT INSTRUCTIONS listed below. As part of those instructions, we have used the word "WARNING" to indicate the level of hazard: WARNING indicates a hazard which, if not avoided, could result in injury or death.

## **IMPORTANT INSTRUCTIONS**

As with all electrical appliances, basic safety precautions should always be followed to reduce the risk of electric shock, fire, or injury to persons, including the following precautions:

- Read all the instructions before using this fan.
- Use this fan only as described in this manual. Any other use not recommended by the manufacturer may cause electrical shock, fire or injury to persons.
- Do not operate the fan with a damaged power cord or after the fan malfunctions or has been dropped in any manner.
- Use of extreme caution is necessary when any fan is used by or near children, disabled persons or pets and whenever the fan is left operating unattended.
- Do not place the fan on an unlevel, uneven or any surface which might allow fan to tip or fall.
- For proper operation, fan should be placed on a smooth, non-combustible, level surface.
- Always unplug fan when not in use, when moving from place to place, when assembling or disassembling parts, and before cleaning.
- The use of attachments, not recommended or sold by the manufacturer, may cause hazards.
- Do not use outdoors.
- Do not use fan in window. Rain may cause electrical hazard (for non-window models).
- Do not operate the fan with blade guards or any safety device removed.
- Avoid the use of extension cords due to risk of fire. If an extension cord must be used, the cord must be minimum 14 AWG and rated not less than 1875 watts.
- Do not run power cord under carpeting. Do not cover cord with throw rugs, runners or the like. Arrange cord away from traffic area where it will not be tripped over.
- Do not insert or allow any object to enter any openings on the fan. Doing so may cause electric shock and/or fire hazard. Avoid contact with moving parts.
- Children should be supervised to ensure they do not play with the appliance.

## **READ & SAVE THESE INSTRUCTIONS**

### **WARNING: Shock Hazard**

Use your fan only in dry environments. This fan is not intended for use in a bathroom, laundry area, or similar locations, or near sinks, washing machines, swimming pools or other sources of water. Never locate fan where it may fall into a bathtub or other water receptacle. Do not use in damp environments such as flooded basements.

### **WARNING: Hot Surfaces**

Do not touch fan motor when in use. This motor is hot when in use, to avoid burns, do not let bare skin touch hot surfaces.

### **WARNING: Fire Hazard**

Fans have arcing or sparking parts inside. Do not use near combustible materials or flammable gases or sources of heat. DO NOT USE in areas where gasoline, paint or flammable materials are used or stored. To prevent a possible fire, do not block air intakes or exhaust in any manner.

Do not insert or allow foreign objects to enter any ventilation or exhaust opening as this may cause an electric shock, fire, or damage the fan.

### **WARNING: Electrical Shock Hazard**

Do not use with damaged cord or plug. Use with adequate electrical system that is up to code.

**CAUTION:** to prevent electric shock, this product has a three prong grounded plug that must be inserted into a matching properly grounded outlet to reduce the risk of electrical shock. Do not attempt to defeat this safety feature.

**WARNING:** to reduce the risk of fire or electric shock, do not use this product with any solid-state speed control device.

Do not operate any fan with a damaged cord or plug or after fan malfunctions, has been dropped or damaged in any manner.

Do not operate fan with a broken blade, safety cage or any visual imperfections. Disconnect power before servicing. For repairs covered under warranty, see warranty statement.

Do not run power cord under carpeting. Do not cover cord with throw rugs, runners or the like. Arrange cord away from traffic area where it will not be tripped over. Avoid the use of extension cords due to risk of fire. If an extension cord must be used, the cord must be minimum 14 AWG and rated not less than 1875 watts. Do not use an extension cord unless the plug can be completely inserted into its receptacle. Unplug the fan when not in use. Do not operate fan with its ventilation obstructed.

**CAUTION:** This fan is equipped with an automatic reset limit control. If fan overheats for any reason this limit control will open and will stop the fan

**CAUTION:** Read and follow all instructions before operating fan. Do not use fan if any part is damaged or missing.

**WARNING:**

1. To reduce the risk of fire or electric shock, do not use this fan with any solid state speed control device.
2. This appliance has a ground plug which is intended to fit in an outlet only one way. If this does not fit outlet contact a qualified electrician. Do not attempt to bypass this procedure.
3. This product is for indoor use only.
4. Unplug from electrical supply source before cleaning.
5. If the power cord is damaged, contact your local service center or a qualified electrician to install an appropriate replacement cord to prevent any injury or damage.
6. Children should be supervised to ensure that they do not play with the appliance

**Rules for Safe Operation:**

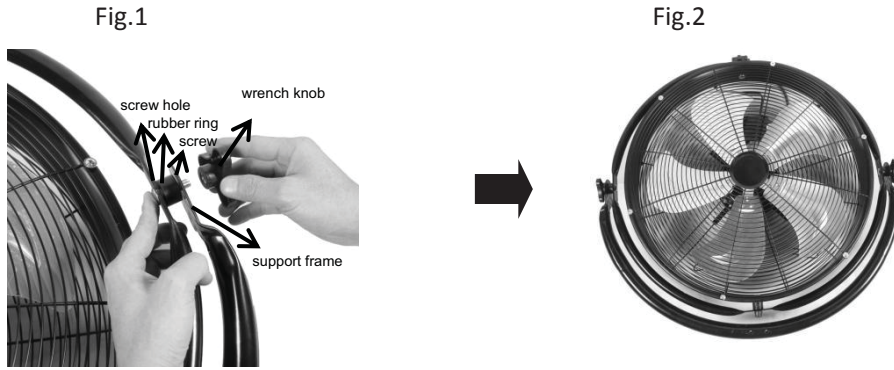
1. Never insert fingers, pencils, or any other object through the guard when fan is running.
2. Disconnect the fan when moving from one location to another.
3. Disconnect the fan when removing grilles for cleaning.
4. Be sure fan is on a stable surface when operating to avoid overturning.
5. Do not use fan in window. Rain may create electrical hazard.
6. The fan is for commercial use only.
7. Do not leave the fan running unattended.

**Operating Instructions:**

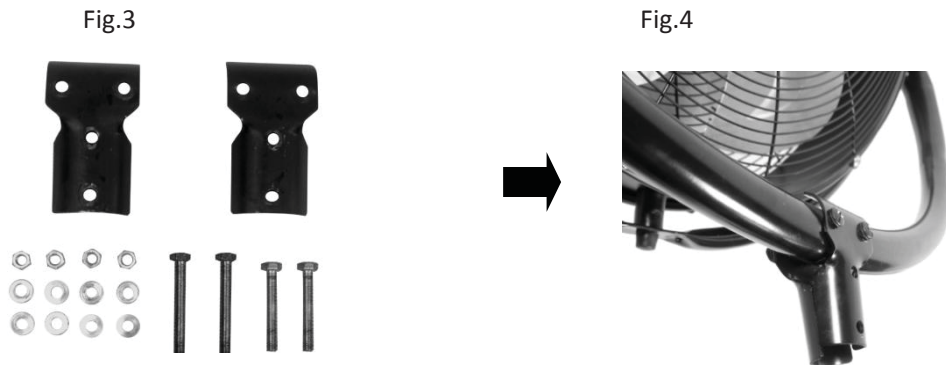
1. Adjust the desired speed by rotating the switch:  
**0 - Stop, 1 -Low, 2 -Medium, 3 -High.**
2. Adjust the tilt angle by rotating the guard. Loosen the knobs before rotating and tighten after rotation is set.

### Assembly Instructions:

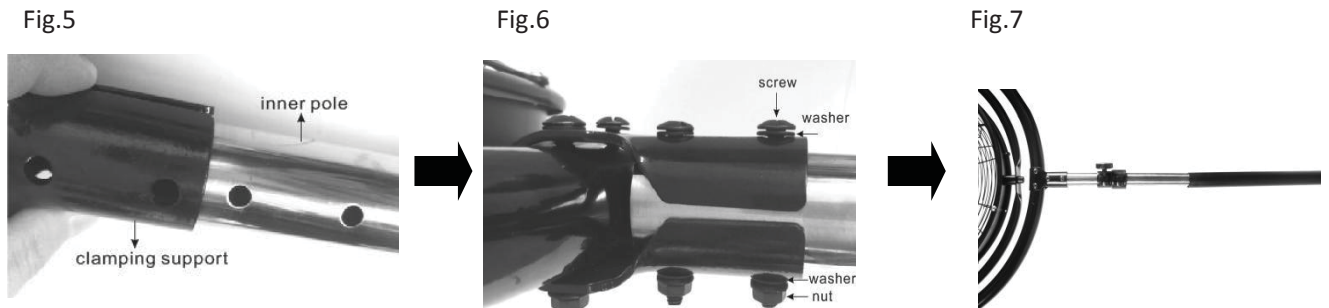
1. On both sides of the fan head align the screw hole with the screw, rubber ring, and the hole on the support frame, then insert the wrench knob to tighten them up. (fig.1,2.)



2. Align the holes on the bottom of the U-shaped bracket with clamping support, then insert the screw with washer, tighten up with washer and nut. (fig.3,4)



3. Insert the end of the inner pole with screw holes into the clamping support. Insert the short screw through the holes on the clamping support and inner pole with washers. Tighten up with the washer and nut. (fig.5,6) Shown complete in fig. 7.

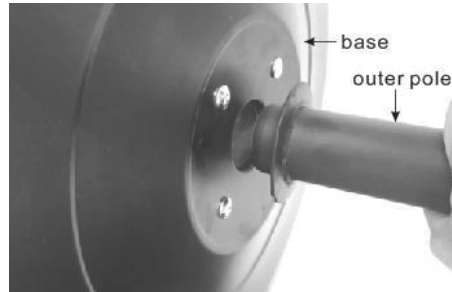


- Loosen the L-shaped bolt and big washer on the outer pole, insert the end of the outer pole into the base hole.(see fig. 8, 9)

Fig.8



Fig.9



- Align the hole on the base with the one on the weight. Then insert the L-shaped bolt through the holes with the big washer. (see fig.10,11)

Fig.10

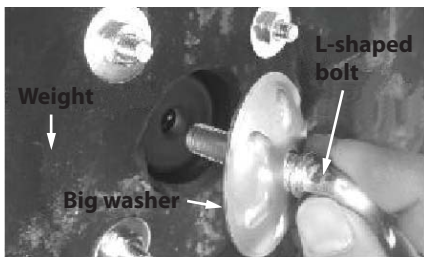
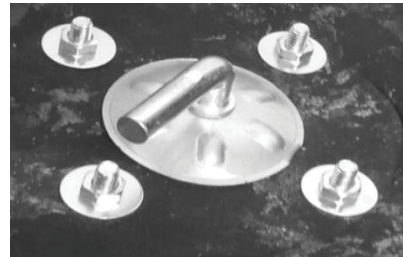


Fig.11



- Inert the decorative cap through the outer pole.
- Inert the inner pole into the outer pole and tighten up the screw on the plastic holder. (see fig.12, 13)  
**IMPORTANT: THERE IS A SPRING COIL INSIDE THE OUTER HOLE. DO NOT TAKE IT OUT DURING ASSEMBLY.**
- Loosen the screw knob on the inner pole and adjust the fan to the height you want, then tighten the screw knob. (see fig.14)

Fig.12

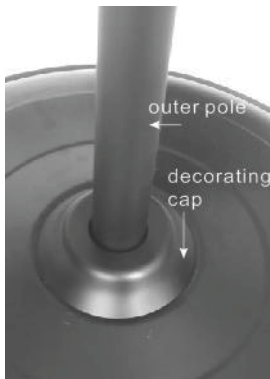


Fig.13

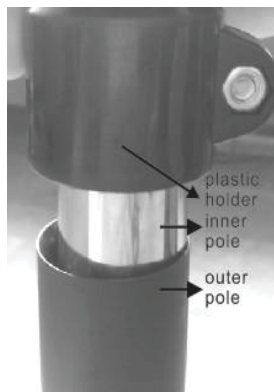


Fig.14



## Care and Maintenance

**Cleaning:** CAUTION-Before cleaning the fan be sure to disconnect power cord from the plug. Clean the grille surface with a clean damp cloth. Do not use harsh chemical or abrasive cleaners. DO NOT IMMERSE THE FAN OR ANY WIRES IN WATER. Replace front grille before fan use. Allow fan to dry completely before use. Periodic grille cleaning with a vacuum will prevent dust build up. The motor is sealed and does not require any interior maintenance, cleaning or lubrication.

**Maintenance:** The Internal motor bearings are permanently lubricated at the factory and do not require any additional lubrication.

**Repair:** DO NOT OPERATE THE FAN WITHOUT THE GRILLE IN PLACE. DO NOT USE THE FAN IF IT HAS MALFUNCTIONED OR BECOME DAMAGED IN ANY WAY.

**Storage:** Keep original carton for storage of the fan. Coil and tie the power cord to avoid damage during storage.

### Fuse Replacement:

1. Grasp plug and remove from the receptacle or other outlet device. Do not unplug by pulling on cord.
2. Open fuse cover by sliding open fuse access cover on top of attachment plug towards blades. See Fig. 15.
3. Remove fuse carefully. Use a small tool to pry the end of the fuse from holder cavity. Be careful not to break glass window. See Fig. 16.
4. Replace fuse. WARNING: Risk of fire. Replace fuse only with identical 2.5 or 5.0 Amp, 125 Volt fuse (3.6mm x 10mm). Be sure fuse is properly seated within its cavity.
5. Close fuse cover by sliding it back to its original closed position. See Fig. 17.



Fig. 15



Fig. 16

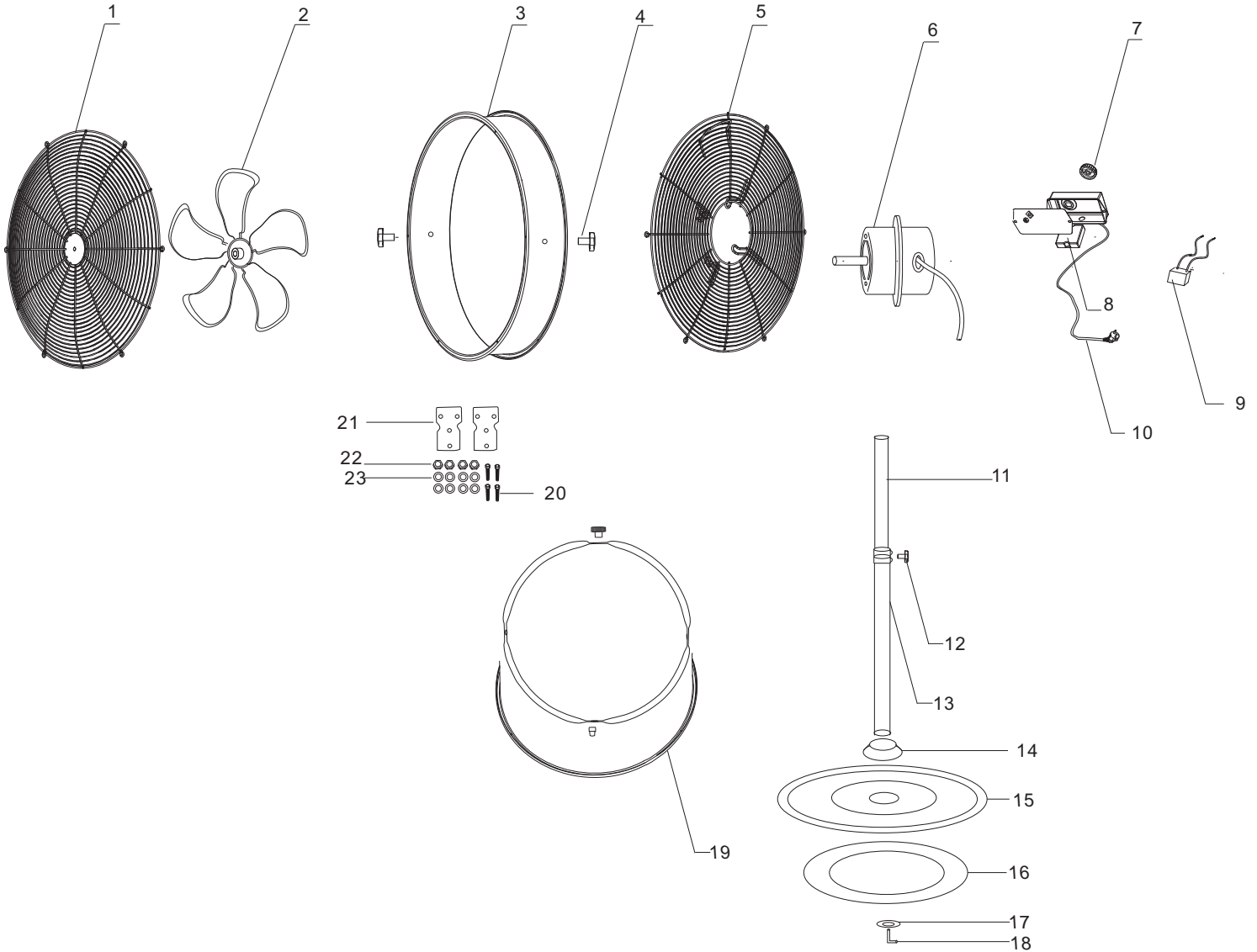


Fig. 17

Tips: Do not overexert when replacing the fuse or damage may occur. If it is hard to close the access cover, make sure the fuse is fully inserted.

## REPLACEMENT PARTS

Not all components of this product are replacement items, but are illustrated as a convenient reference for position in the assembly sequence. When ordering parts, give model number, part number and description. Call your distributor for current pricing:



ITEM#	ORDERING PART#	PART DESCRIPTION
1	PRT30321-01	FRONT GUARD
2	PRT30321-02	BLADE
3	PRT30321-03	FAN SHROUD
4	PRT30321-04	WRENCH KNOB
5	PRT30321-05	REAR GUARD
6	PRT30321-06	MOTOR
7	PRT30321-07-08	SWITCH KNOB
8	PRT30321-07-08	SWITCH
9	PRT30321-09	CAPACITOR
10	PRT30321-10	POWER CORD
11	PRT30321-11	INNER POLE
12	PRT30321-12	SCREW KNOB

ITEM#	ORDERING PART#	PART DESCRIPTION
13	PRT30321-13	OUTER POLE
14	PRT30321-14	DECORATING CAP
15	PRT30321-15	BASE
16	PRT30321-16	WEIGHT
17	PRT30321-17	BIG WASHER
18	PRT30321-18	L-SHAPED ADJUSTMENT SCREW
19	PRT30321-19	U-SHAPED BRACKET
20	PRT30321-20	SCREW
21	PRT30321-21	CLAMPING SUPPORT
22	PRT30321-22	NUT
23	PRT30321-23	WASHER





**THIS WARRANTY AND CONFIRMED RECEIPT(S) SHOULD BE RETAINED BY THE CUSTOMER AT ALL TIMES**

PURCHASED FROM: \_\_\_\_\_

DATE PURCHASED: \_\_\_\_\_

INVOICE/RECEIPT NUMBER: \_\_\_\_\_

Your ATD-30321 is warranted for a period of 12 months from the original purchase date.

For a period of one (1) year from your purchase date, ATD Tools, Inc. will repair or replace (at its option) without charge, your ATD product if it was purchased new and the product has failed due to a defect in material or workmanship which you experienced during normal use of the product. This limited warranty is your exclusive remedy.

To access the benefits of this warranty, contact your supplier, or point of sale directly. You may be advised to return the product under warranty, freight prepaid, to your supplier for warranty determination.

If this ATD product is altered, abused, misused, modified, or undergoes service by an unauthorized technician, your warranty will be void. We are not responsible for damage to ornamental designs you place on this ATD product and such ornamentation should not cover any warnings or instructions or they may void the warranty. This warranty does not cover scratches, superficial dents, and other abrasions to the paint finish that occur under normal use. It also does not cover normal wear items such as but not limited to brushes, batteries, drill bits, drill chucks, pads or blades.

Subject to the law in your state:

- (1) Your sole and exclusive remedy is repair or replacement of the defective product as described above.
- (2) ATD is not liable for any incidental damages, including but not limited to, lost profits and unforeseeable consequences.
- (3) The repair and replacement of this product under the express limited warranty described above is your exclusive remedy and is provided in lieu of all other warranties, express or implied. All other warranties, including implied warranties and warranties of merchantability or fitness for a particular purpose are disclaimed and, if disclaimer is prohibited, these warranties are limited to one year from your date of purchase of this product.

Some states' laws do not allow limited durations on certain implied warranties and some states' laws do not allow limitations on incidental or consequential damages. You should consult the law in your state to determine how your rights may vary.

[Affix receipt or invoice here for safe keeping]