



ATD-15218 Grease Control Valve Owner's Manual



Features:

- Premium quality grease control valve for use with air operated grease pumps
- Capable of dispensing grease at pressures up to 7,500 psi
- Provides continuous grease flow with trigger fully pressed
- Steel construction for durability and longevity
- Ergonomically designed pistol handle
- Comes complete with 6" steel extension and heavy-duty coupler

SAFETY INFORMATION

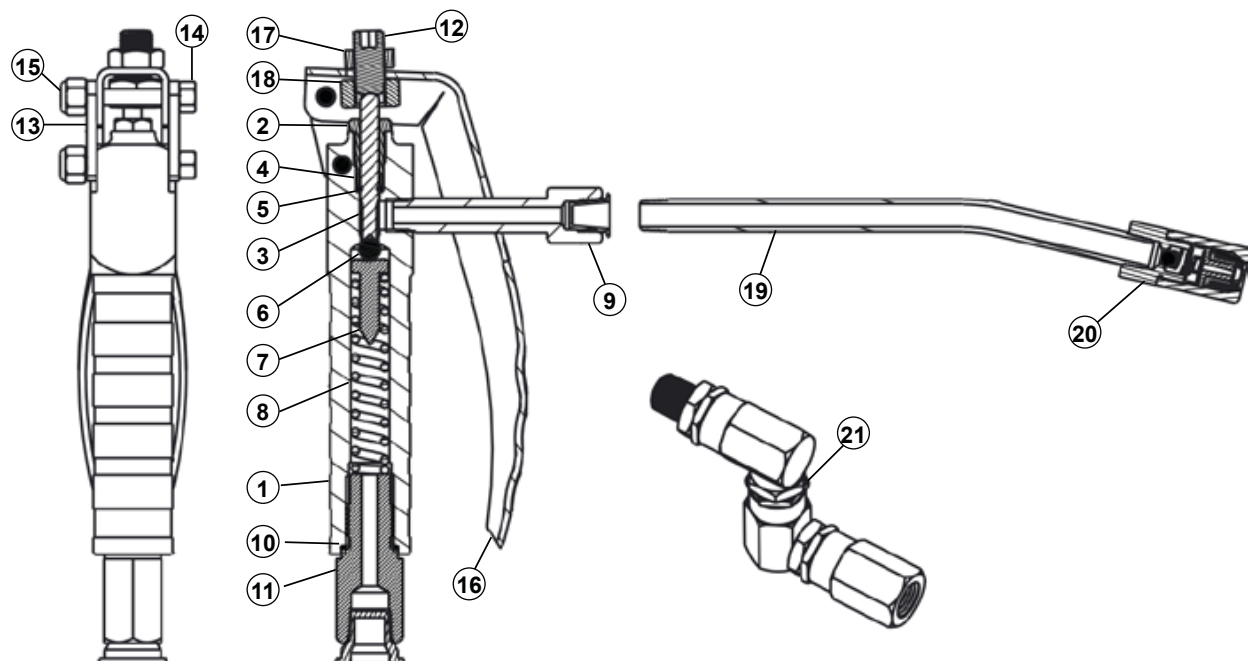
- Follow all of your workshop health & safety rules, regulations and conditions when using the Grease Control Valve
- Use genuine parts only. Unauthorized parts may be dangerous and will void the warranty.
- Wear approved safety gloves and eye and ear protection.
- Keep the Control Valve clean and in good working order for best and safest performance.
- When not in use, disconnect from air supply and store in a safe, dry, childproof location.

WARNINGS:

- **DO NOT** use the Control Valve for a task it is not designed to perform.
- **DO NOT** carry the Control Valve by the hose.
- **DO NOT** use the Control Valve if damaged or thought to be faulty. Contact your local service center.
- Grease is delivered at high pressure. **DO NOT** point the grease outlet at yourself or others.
- **NEVER** exceed the stated maximum working pressure of the pump or of the lowest rated component in your system.
- **NEVER** modify any part of this equipment.
- **NEVER** use combustible gas with this equipment.
- **NEVER** attempt repairs while the system is under pressure.
- **NEVER** attempt to disassemble the equipment while the system is under pressure.
- **ALWAYS** tighten fluid connections before using this equipment.
- **ALWAYS** read/follow the fluid manufacturer's recommendations regarding fluid compatibility.
- **ALWAYS** read/follow the fluid manufacturer's recommendations regarding the use of protective clothing and equipment.
- **ALWAYS** use an air line filter/moisture eliminator at the air inlet for the pump.
- **ALWAYS** use air line lubricator.
- **REGULARLY** check all equipment and repair/replace worn or damaged parts immediately.

FAILURE TO HEED THESE WARNINGS INCLUDING OVER PRESSURIZING, ALTERING PARTS, USE OF INCOMPATIBLE FLUIDS, MISUSE, OR USE OF DAMAGED/WORN PARTS MAY RESULT IN EQUIPMENT DAMAGE, PROPERTY DAMAGE, FIRE, EXPLOSION AND/OR SERIOUS PERSONAL INJURY.

Grease Control Valve
EXPLODED VIEW



REF NO.	PARTS DESCRIPTION	QUANTITY
1	Valve Body	1
2	Rod Guide	1
3	Piston	1
4	Teflon Washer	1
5	O-Ring	1
6	Steel Ball	1
7	Ball Retainer	1
8	Straight Spring	1
9	Valve Outlet	1
10	Brass Washer	1
11	Valve Inlet	1

REF NO.	PARTS DESCRIPTION	QUANTITY
12	Grub Screw	1
13	Side Clip	2
14	Rivet	2
15	Nyloc Nut	2
16	Handle	1
17	Lock Nut	1
18	High Nut	1
19	Extension (Rigid)	1
20	Coupler	1
21	Z- Swivel	1

REPLACEMENT PARTS

Not all components of this product are replacement items, but are illustrated as a convenient reference for position in the assembly sequence. When ordering parts, give model number, part number and description. Call your distributor for current pricing:



ITEM#	ORDERING PART#	PART DESCRIPTION	QTY
1	PRT15218-01	GREASE CONTROL VALVE REPAIR KIT (KIT/APG-04)	1
2	PRT15218-02	GREASE COUPLER (HC/12/4/N)	1
3	PRT15218-03	GREASE BEND PIPE (6") (GBP/6/N)	1
4	ATD-5253	Z-SWIVEL (HFC/1-4F/1-4M/N)	1



THIS WARRANTY AND CONFIRMED RECEIPT(S) SHOULD BE RETAINED BY THE CUSTOMER AT ALL TIMES

PURCHASED FROM: _____

DATE PURCHASED: _____

INVOICE/RECEIPT NUMBER: _____

Your ATD-15218 is warranted for a period of 12 months from the original purchase date.

For a period of one (1) year from your purchase date, ATD Tools, Inc. will repair or replace (at its option) without charge, your ATD product if it was purchased new and the product has failed due to a defect in material or workmanship which you experienced during normal use of the product. This limited warranty is your exclusive remedy.

To access the benefits of this warranty, contact your supplier, or point of sale directly. You may be advised to return the product under warranty, freight prepaid, to your supplier for warranty determination.

If this ATD product is altered, abused, misused, modified, or undergoes service by an unauthorized technician, your warranty will be void. We are not responsible for damage to ornamental designs you place on this ATD product and such ornamentation should not cover any warnings or instructions or they may void the warranty. This warranty does not cover scratches, superficial dents, and other abrasions to the paint finish that occur under normal use. It also does not cover normal wear items such as but not limited to brushes, batteries, drill bits, drill chucks, pads or blades.

Subject to the law in your state:

- (1) Your sole and exclusive remedy is repair or replacement of the defective product as described above.
- (2) ATD is not liable for any incidental damages, including but not limited to, lost profits and unforeseeable consequences.
- (3) The repair and replacement of this product under the express limited warranty described above is your exclusive remedy and is provided in lieu of all other warranties, express or implied. All other warranties, including implied warranties and warranties of merchantability or fitness for a particular purpose are disclaimed and, if disclaimer is prohibited, these warranties are limited to one year from your date of purchase of this product.

Some states' laws do not allow limited durations on certain implied warranties and some states' laws do not allow limitations on incidental or consequential damages. You should consult the law in your state to determine how your rights may vary.

[Affix receipt or invoice here for safe keeping]