



ATD-80118

18 LED Cordless Worklight

Owner's Manual



Features and Specifications:

- 18 Super Bright LEDs
- Chrome plated reflector with focused lens
- 3.7V 650mAH Li-Ion battery, with auto shut off function and overcharge protection can prolong the battery life
- Low voltage indicator on the light
- Anti-roll bumper and tough impact resistance design
- Ergonomic Grip Handle
- UL listed charger

Operating instructions

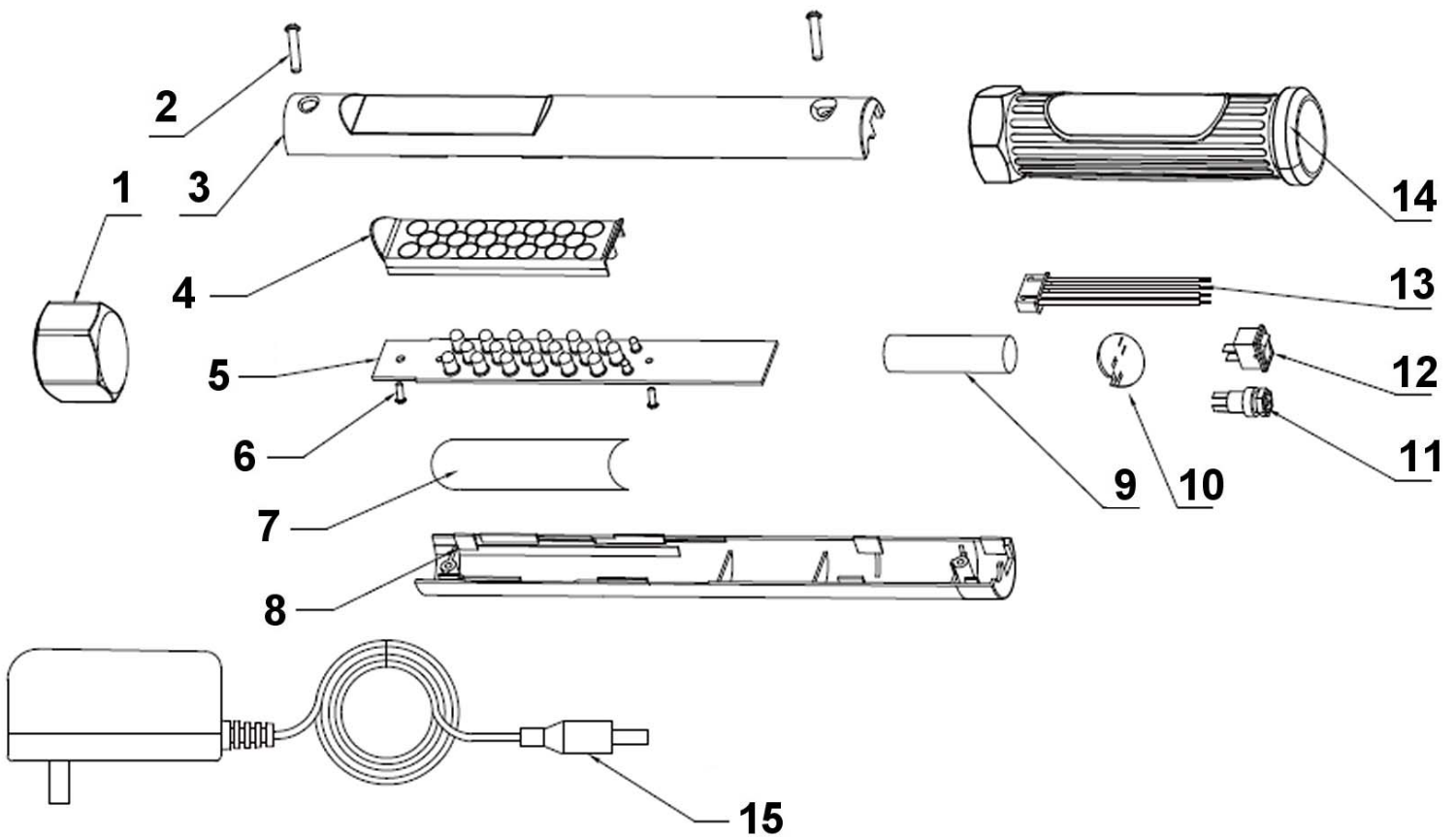
- To use, plug the unit into any 110-120 VAC power source, such as a wall receptacle. Let the unit fully charge until the green indicator on the charger turns on before use.
- Charge this light every month if not in constant use, and after each use if it is used often to insure longevity.
- Press the on/off switch (I) to turn unit on, press the other side of switch (O) to turn it off.

Cautions

- For indoor use only - don't use in or around, tubs, showers, sinks, pools, hot tubs, or in a wet environment
- Use only the recommended voltage and frequency requirements
- Do not use if the cords or clear lens are damaged
- Keep out of reach of children
- Do not operate light with wet hands.
- Keep lamp away from hot objects.



ATD-80118



ITEM#	ORDERING PART#	PART DESCRIPTION
1	PRT80118-01	TOP COVER
2	PRT80118-02	SCREW 1
3	PRT80118-03	CLEAR TUBE (FRONT)
4	PRT80118-04	REFLECTOR
5	PRT80118-05	LED PCB
6	PRT80118-06	SCREW 2
7	PRT80118-07	INSIDE LABEL
8	PRT80118-08	CLEAR TUBE (REAR)
9	PRT80118-09	LI-ION BATTERY
10	PRT80118-10	PCB (FOR SWITCH)
11	PRT80118-11	CHARGING CONNECTOR
12	PRT80118-12	SWITCH
13	PRT80118-13	ASSEMBLY WIRE
14	PRT80118-14	HANDLE
15	PRT80118-15	CHARGER