



ATD-80376

500 Lumen COB Rechargeable Work Light With Charging Station Owner's Manual



Features

- Front COB LED with (2) brightness settings - 500 lumens (high), 250 lumens (low)
- (1) SMD LED top light provides an additional flashlight function – 50 lumens
- Constant current design provides consistent light output
- Removable swivel hooks with magnets allow hands free use
- Rubberized handle provides a non-slip grip
- Tough impact resistant ergonomic housing
- Battery level indicator
- Strong magnets and keyhole slots on docking station provide multiple mounting options
- IP54 rated for dust and water resistance
- Lithium-ion rechargeable battery for longer life and consistent power
- Automatic shut-off and overcharge protection for optimal battery life

Specifications:

- Front COB LED with (2) brightness settings - 500 lumens (high), 250 lumens (low)
- (1) SMD LED top light provides an additional flashlight function – 50 lumens



Figure 1

Operating instructions

- To charge, plug the AC adapter into the charging station and into any 110-120V AC power source, such as a wall receptacle. Slide the light into the charging station, face out. Let the light fully charge until the 4 LCD segments on the front of the light are illuminated. (See figure 1).
- Press the switch once for top LED, twice for front bulb low power, three times for front bulb high power and four times for off.
- Charge the light after each use if it is used often to ensure longevity. Charge light every month if it is not in constant use.

Cautions

- Use only the recommended voltage and frequency requirements.
- Keep out of reach of children.
- Do not operate light with wet hands.
- Keep lamp away from hot objects.

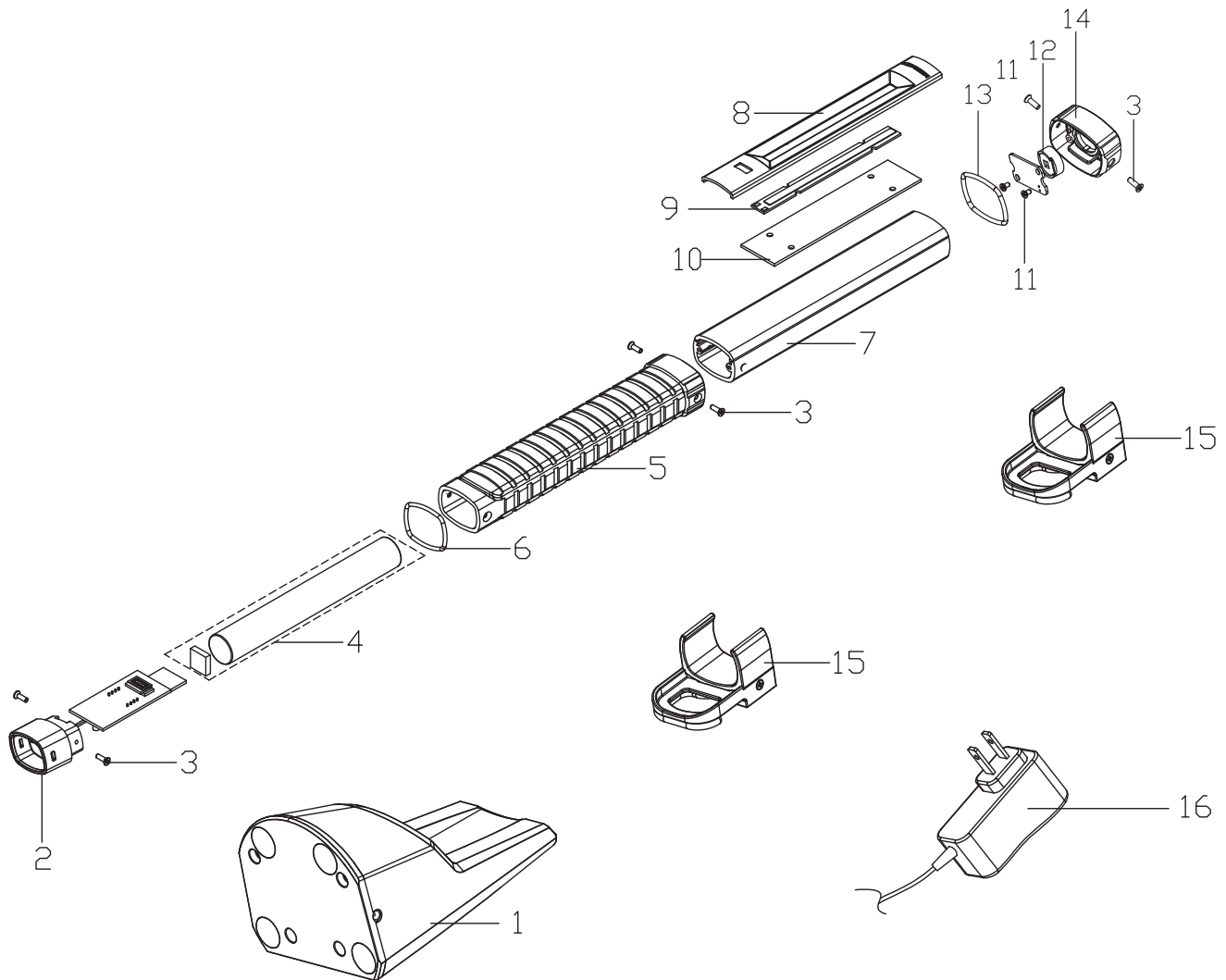


WARNING



WARNING: This product contains chemicals, including lead, known to the State of California to cause cancer, birth defects or other reproductive harm. **Wash hands after handling.**

SABER®
ATD-80376



ITEM#	ORDERING PART#	PART DESCRIPTION
1	PRT80376-01	CHARGING STATION
2	PRT80376-02	BOTTOM FIXED BLOCK WITH PCBA
3	PRT80373-04	SCREW A
4	PRT80375-04	LI-ION BATTERY
5	PRT80375-05	HANDLE
6	PRT80376-06	O-RING
7	PRT80373-07-14	TOP BLOCK AND PC TUBE ASSY
8	PRT80376-06	REFLECTOR

ITEM#	ORDERING PART#	PART DESCRIPTION
9	PRT80375-09	LED
10	PRT80375-10	HEAT SINK
11	PRT80373-11	SCREW B
12	PRT80373-12	LED COVER
13	PRT80373-07-14	TOP BLOCK AND PC TUBE ASSY
14	PRT80373-07-14	TOP BLOCK AND PC TUBE ASSY
15	PRT80373-15	HOOK ASSEMBLY
16	PRT80373-16	AC ADAPTOR, 5V 2A