



ATD-80369

FOLDING MINI THIN LIGHT

Owner's Manual



Features

- Ultra-thin design pivots to allow inspection in the tightest work areas.
 - 5 SMD LED's provide 120 Lumens.
 - 1 SMD LED top light offers an additional flashlight function - 30 Lumens.
 - Strong magnetic base sticks to steel surfaces.
 - 360° folding light wand pivots to direct light to the work area and allows the light to fold flat and be used like a flashlight.
 - Built in belt clip.
 - Folding metal hook on the bottom of light.
 - Includes versatile 3-in-1 charging system.
 - Automatic shut-off and overcharging protection for optimal battery life.
 - Tough, impact resistant ergonomic housing.
 - 3.7V, 700mAh Li-Ion rechargeable battery for long life and consistent power.
 - Run time: up to 3-hours continuous.
- Length: 8"

Operating instructions

- To use, plug the unit into any 110-120V AC Power source, 12V DC power source or 5V DC USB port. Let the unit fully charge until red indicator near the USB charging port turns green before use.
- To turn on and off, press the switch on the handle of the light: Top, Front, Off.
- Charge the light after each use if it is used often to ensure longevity. Charge light every month if not in constant use.

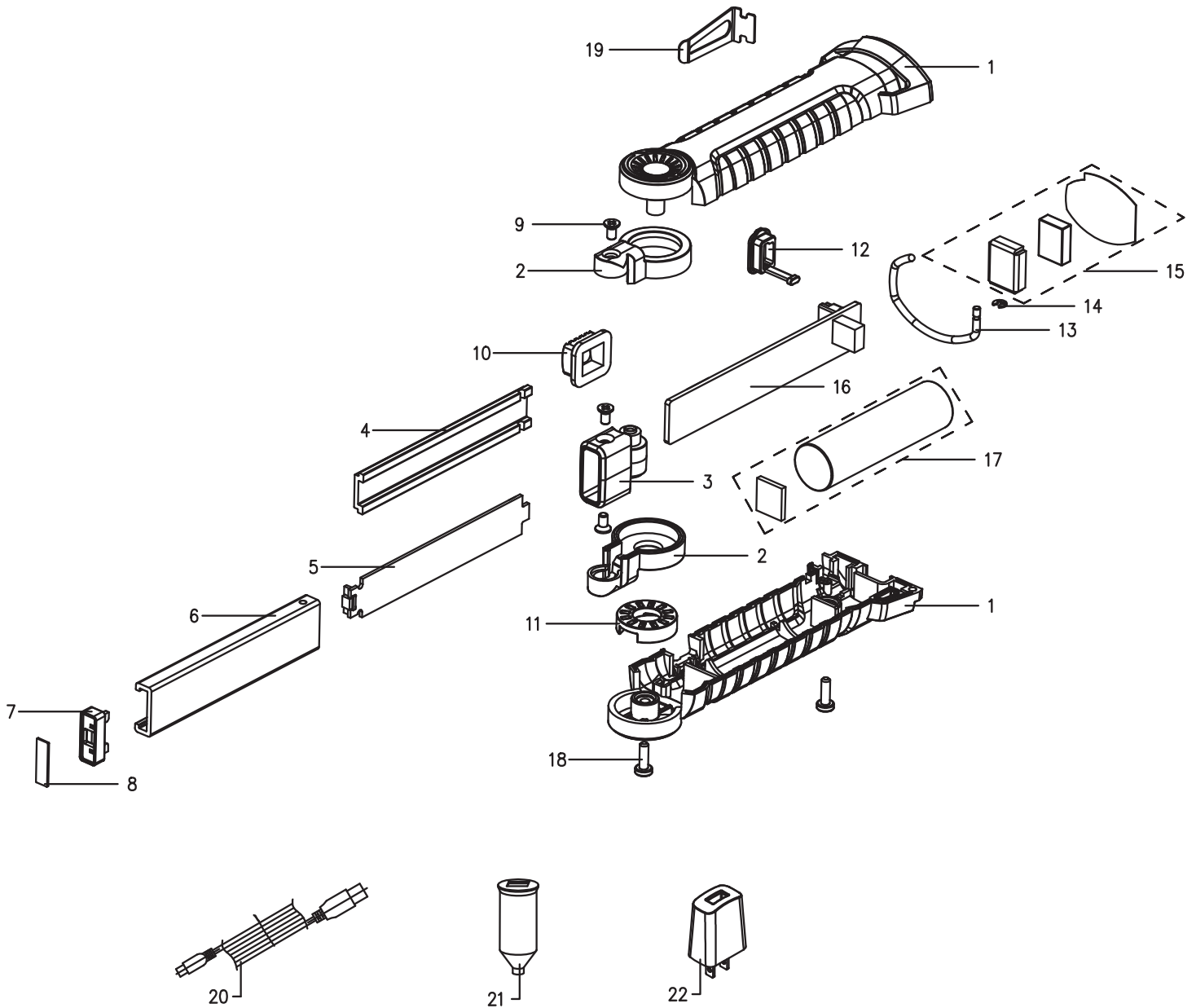
Cautions

- DO NOT USE in or around tubs, showers, sinks, pools, hot tubs, or in a wet environment.
- Use only the recommended voltage and frequency requirements.
- Keep out of reach of children.
- Do not operate light with wet hands.
- Keep light away from hot objects.

⚠ WARNING ⚠

WARNING: This product contains chemicals, including lead, known to the State of California to cause cancer, birth defects or other reproductive harm. Wash hands after handling.

ATD-80369



| ITEM# | ORDERING PART# | PART DESCRIPTION |
|-------|----------------|------------------------|
| 1 | PRT80369-01 | HANDLE SET ASSY |
| 2 | PRT80369-02 | LIGHT FIXED BLOCK ASSY |
| 3 | PRT80369-03 | CONNECTION PART |
| 4 | PRT80369-04 | LAMP COVER |
| 5 | PRT80369-05 | PCB BOARD |
| 6 | PRT80369-06 | LIGHT BASE |
| 7 | PRT80349-06 | TOP COVER |
| 8 | PRT80349-07 | TOP LABEL |
| 9 | PRT80349-14 | SCREW A 2.5*5 |
| 10 | PRT80349-12 | SWITCH |
| 11 | PRT80349-08 | GEAR TOOTH |

| ITEM# | ORDERING PART# | PART DESCRIPTION |
|-------|----------------|---------------------|
| 12 | PRT80395-16 | USB COVER |
| 13 | PRT80369-13 | HOOK |
| 14 | PRT80369-14 | HOOK FIXED PART |
| 15 | PRT80369-15 | MAGNET ASSY |
| 16 | PRT80369-16 | CONTROL BOARD |
| 17 | PRT80318-10 | LI-ION BATTERY |
| 18 | PRT80349-15 | SCREW B 2.5*10 |
| 19 | PRT80369-19 | CLIP |
| 20 | PRT80304-27 | USB CONNECTION LINE |
| 21 | PRT80304-31 | CAR ADAPTOR |
| 22 | PRT80304-22 | AC ADAPTOR |