



ATD-80345

Rechargeable LED Thin Work Light Owner's Manual



Features

- Ultra - thin design allows inspection in the tightest work areas
- 5W COB LED bulb delivers a wider and brighter lighting area
- (1) SMD LED bulb top light offers an additional flashlight function
- Light head pivots 180 degrees to direct light to the work area
- Super strong magnetic base sticks to steel surfaces
- Tough, impact resistant ergonomic housing
- Constant current design provides consistent light output
- Lithium-ion rechargeable battery for longer life and consistent power
- Automatic shut-off and overcharge protection for optimal battery life
- Versatile 3-in-1 charging system

Specifications

- Brightness: 500 lumens high / 250 lumens low
- Top Light: 30 lumens
- Working Time: 2-hours high / 4-hours low
- Battery: 3.7V, 2600mAh lithium-ion battery
- Length: 13.11"
- Weight: 0.56 lbs.

Operating instructions

- Before use, plug the unit into any 110-120V AC power source, 12V DC power source or 5V DC USB port and let unit fully charge until the green indicator turns on.
- Charge this light every month if not in constant use, and after each use if it is used often, to ensure longevity.
- Press the switch at the back of the handle to turn on. Once for top light, twice for front bulb low power, three times for front bulb high power, four times to turn off.

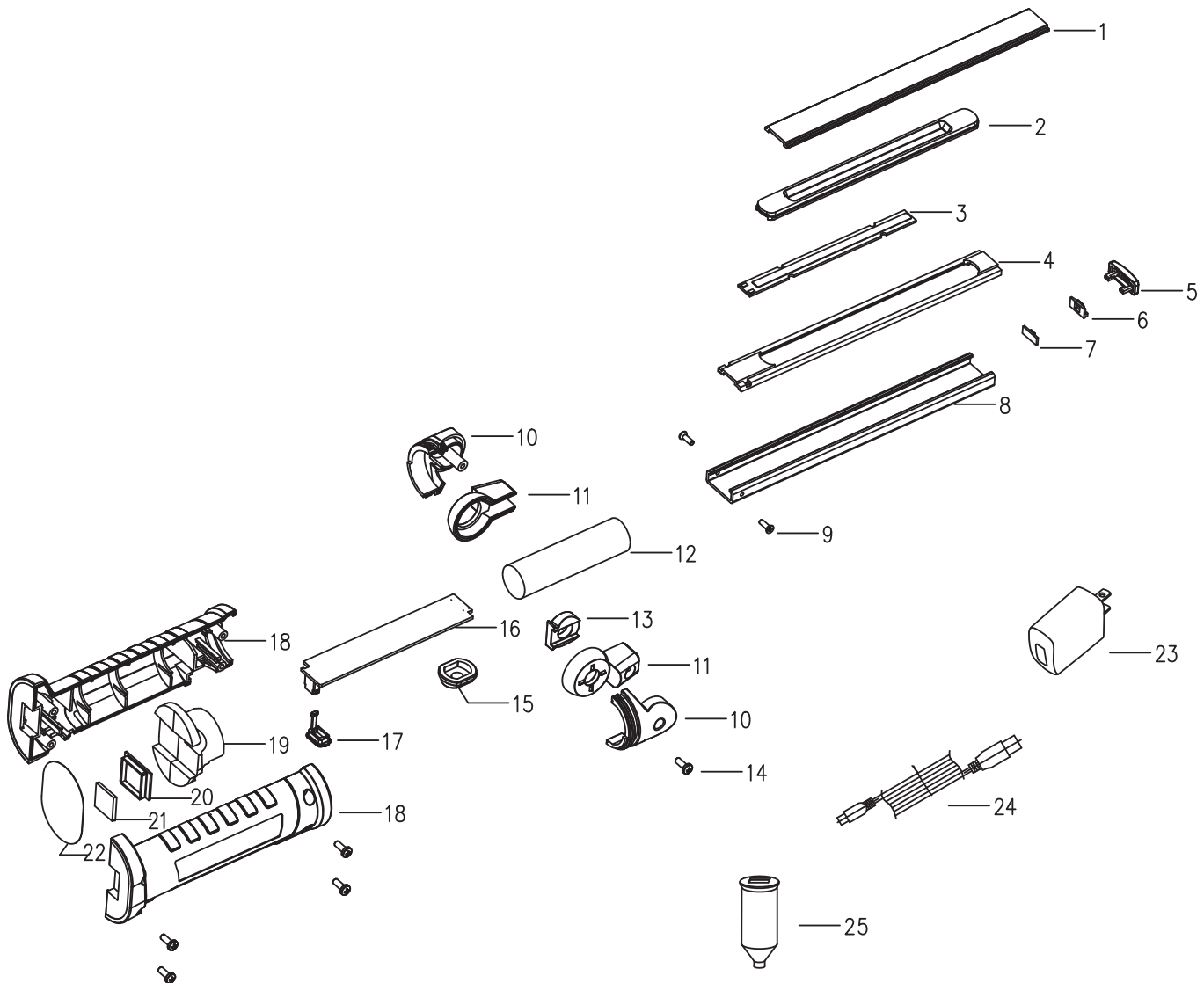
Cautions

- For indoor use only - do NOT use in or around tubs, showers, sinks, pools, hot tubs or in a wet environment.
- Use only the recommended voltage and frequency requirements.
- Keep out of reach of children.
- Do not operate light with wet hands.
- Keep lamp away from hot objects.

⚠ WARNING ⚠

WARNING!: THIS PRODUCT CONTAINS CHEMICALS, INCLUDING LEAD, KNOWN TO THE STATE OF CALIFORNIA TO CAUSE CANCER, BIRTH DEFECTS OR OTHER REPRODUCTIVE HARM. **WASH HANDS AFTER HANDLING.**

ATD-80345



ITEM#	ORDERING PART#	PART DESCRIPTION
1	PRT80345-01	PC COVER
2	PRT80345-02	REFLECTOR A
3	PRT80345-03	COB LED
4	PRT80345-04	REFLECTOR B
5	PRT80345-05	TOP COVER A
6	PRT80345-06	TOP COVER B
7	PRT80345-07	TOP PCB WITH LED
8	PRT80345-08	LIGHT BASE
9	PRT80345-09	SCREW A
10	PRT80345-10	RIGHT AND LEFT JOINT
11	PRT80345-11	RIGHT AND LEFT FIXED BLOCK
12	PRT80345-12	LI-ION BATTERY
13	PRT80345-13	GEAR TEETH AND SPRING

ITEM#	ORDERING PART#	PART DESCRIPTION
14	PRT80345-14	SCREW B
15	PRT80345-15	SWITCH COVER
16	PRT80345-16	PCBA
17	PRT80345-17	USB COVER
18	PRT80345-18	RIGHT AND LEFT HANDLE
19	PRT80345-19	COUNTERWEIGHT
20	PRT80345-20	MAGNET BASE
21	PRT80345-21	SQUARE MAGNET
22	PRT80345-22	MAGNET LABEL
23	PRT80304-22	AC ADAPTER
24	PRT80304-27	USB CABLE
25	PRT80304-31	CAR ADAPTER