



## ATD-80165

Retractable Reel Installation and Operating Instructions

### Installation Instructions for Table or Bench Mount

- 1) Choose a dry location within 2 feet of a 120 volt electrical outlet
- 2) Mount bracket directly into table or Bench (figure A)
- 3) Insert reel into bracket, use care to line up the mounting holes (figure B)
- 4) Secure reel to bracket using the 8" pin (figure B)
- 5) Once pin is fully inserted, secure 8" pin with cotter pin (figure B)
- 6) Adjust ball stop so T-Tap or light head hangs at your desired length
- 7) Plug power cord into your 120 volt electrical outlet.

### Installation Instructions for Wall Mount

- 1) Choose a dry location within 2 feet of a 120 volt electrical outlet
- 2) Mount bracket directly into wall stud (figure A) leaving a minimum of 24" between the reel and the outside edge of the wall or door frame.  
**DO NOT MOUNT REEL TO DRYWALL OR ANY UNSUPPORTED WALL MATERIAL DIRECTLY**
- 3) Insert reel into bracket, use care to line up the mounting holes (figure B)
- 4) Secure reel to bracket using the 8" pin (figure B)
- 5) Once pin is fully inserted, secure 8" pin with cotter pin (figure B)
- 6) Adjust ball stop so T-Tap or light head hangs at your desired length
- 7) Plug power cord into your 120 volt electrical outlet.

### Installation Instructions for Ceiling Mount

- 1) Choose a dry location within 2 feet of a 120 volt electrical outlet
- 2) Mount bracket directly into ceiling joist, beam of a reinforced ceiling. (figure A)  
**DO NOT MOUNT REEL TO DRYWALL OR ANY UNSUPPORTED CEILING MATERIAL DIRECTLY**
- 3) Insert reel into bracket, use care to line up the mounting holes (figure B)
- 4) Secure reel to bracket using the 8" pin (figure B)
- 5) Once pin is fully inserted, secure 8" pin with cotter pin (figure B)
- 6) Adjust ball stop so T-Tap or light head hangs at your desired length
- 8) Plug power cord into your 120 volt electrical outlet.

(Figures A,B & C are for general reference only. Shown is the bench mount method.)



FigureA

FigureB

FigureC

### Operating instructions

- 1) Fully extend and lock cord in place before using.
  - 2) To lock, pull cord to desired length. **SLOWLY** let the cord retract back into the reel some, until you hear a clicking sound. Stop the cord from retracting when you hear the clicking sound. Cord should now be locked in place. If not, repeat previous instructions.
  - 3) To retract cord, pull cord out a few inches until you feel the reel pulling the cord from your hand. **DO NOT LET GO OF THE CORD WHILE IT IS RETRACTING.**
- Hold onto cord until it is completely wound into the reel. Failure to do so may result in personal injury and/or damage to the reel itself.
- 4) To lock multi-angle bracket into place, pull looped spring loaded pin out, set reel to desired angle and release looped spring pin to engage into one of the holes to lock it.

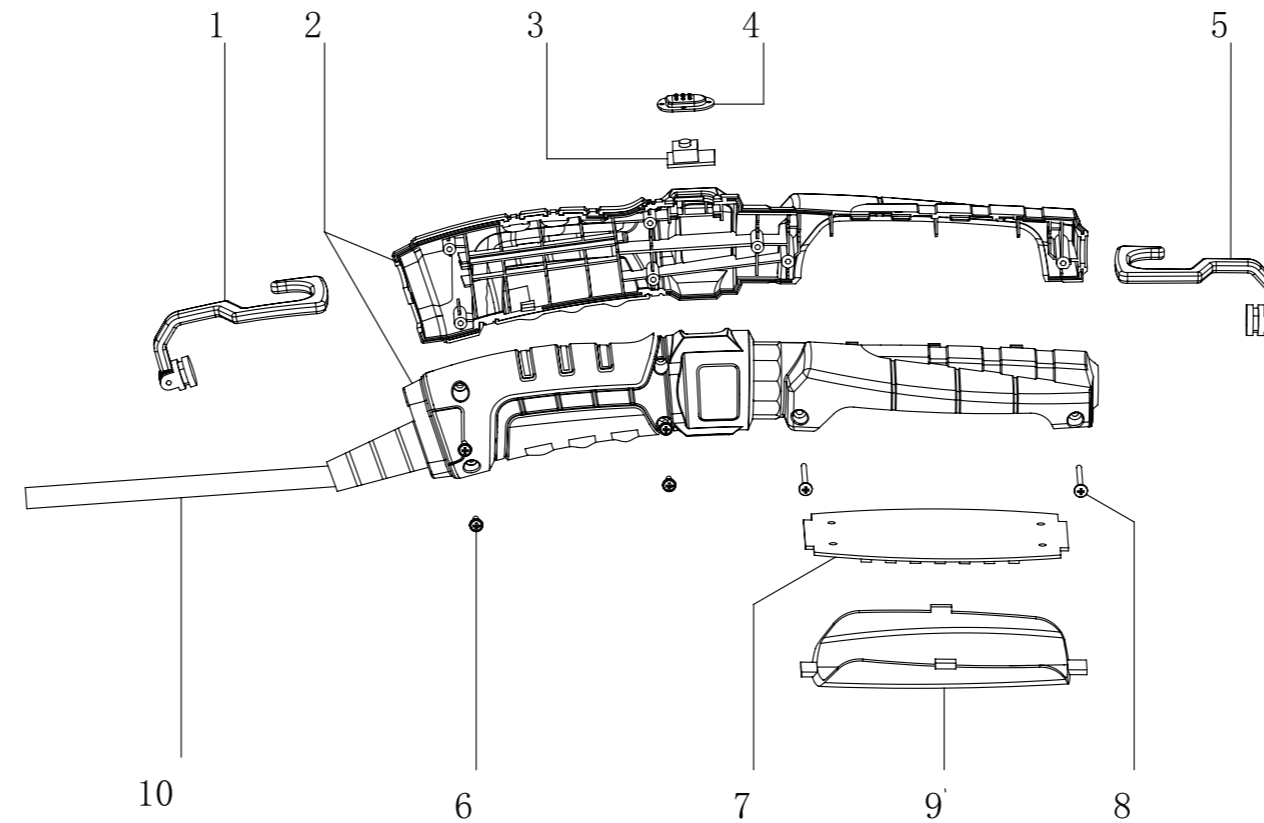
### Cautions

- **Do NOT overload circuit** - Check the amperage rating of the tool or appliance that you are using before connecting anything to the outlet(s) on this product to be sure that you are not overloading the circuit. The amperage rating of this reel can be found on the label on the reel itself. If the circuit breaker blows, unplug all devices and re-sett he circuit breaker. Double check the amperage rating of your device before plugging it back in.
- **Do NOT service this reel light while it is plugged in.** It may cause electrical shock
- **Opening reel may cause injury.** Unit has a tightly wound clock spring for retraction.

Made in China to ATD Tools, Inc. Specifications  
Visit us at [www.atdtools.com](http://www.atdtools.com)



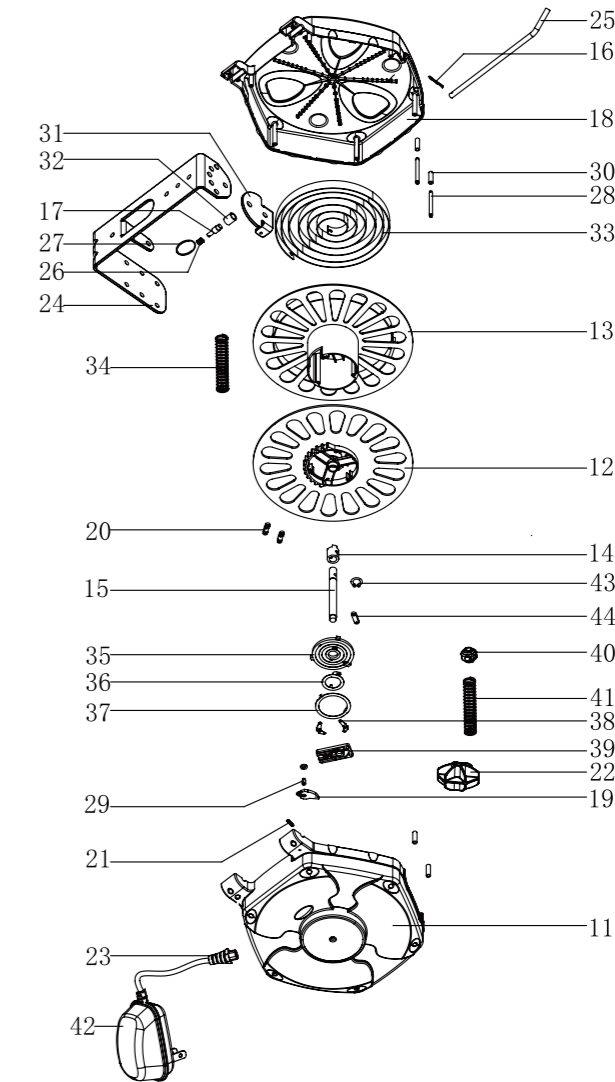
## ATD-80165 (Light)



	ORDERING PART#	
1	PRT80163-01	TOP HOOK
2	PRT80163-02	HANDLES(LEFT AND RIGHT)
3	PRT80163-03	BUTTON SWITCHES (WITH PCB)
4	PRT80163-04	BUTTON
5	PRT80163-05	END HOOK
6	PRT80163-06	SCREW1
7	PRT80163-07	PCBA
8	PRT80163-08	SCREW2
9	PRT80163-09	CLEAR LENS
10	PRT80165-10	ADAPTOR(WITH CORD)



## ATD-80165 (Reel)



ITEM#	ORDERING PART#	PART DESCRIPTION	ITEM#	ORDERING PART#	PART DESCRIPTION
11	PRT80165-11	HOUSING,UPPER	28	PRT80165-28	ROLLER
12	PRT80165-12	REEL COVER	29	PRT80165-29	RATCHET PAWL PIN
13	PRT80165-13	REEL SEAT	30	PRT80165-30	SLEEVE,ROLLER
14	PRT80165-14	BUSHING	31	PRT80165-31	BRACKET MOUNT
15	PRT80165-15	SHAFT	32	PRT80165-32	SLEEVE,PIN
16	PRT80165-16	COTTER PIN	33	PRT80165-33	RETRACTING SPRING
17	PRT80165-17	PIN	34	PRT80165-34	SPRING
18	PRT80165-18	HOUSING,LOWER	35	PRT80165-35	TERMINAL BOX,SQUARE
19	PRT80165-19	RATCHET PAWL	36	PRT80165-36	SMALL RING
20	PRT80165-20	FLANGE	37	PRT80165-37	LARGE RING
21	PRT80165-21	SPRING,SMALL	38	PRT80165-38	COPPER PIECES
22	PRT80165-22	STOP BALL	39	PRT80165-39	TERMINAL BOX,SQUARE
23	PRT80165-23	CORD SHEATH	40	PRT80165-40	HOOP
24	PRT80165-24	BRACKET	41	PRT80165-41	SPRING
25	PRT80165-25	PIN	42	PRT80165-42	ADAPTER
26	PRT80165-26	SPRING	43	PRT80165-43	CIRCLIP
27	PRT80165-27	SPRING	44	PRT80165-44	RIVET