



ATD-80163

64 - SMD LED Corded Work Light

Owner's Manual



Features and Specifications:

- 64 Super Bright SMD LEDs
- 18/2 SJTW 25ft cord remains flexible in cold weather and water resistant
- ABS handle with double injection, impact protection and ergonomic design provide comfortable usage
- Dual 360°swivel hooks for hanging versatility
- UL listed adaptor

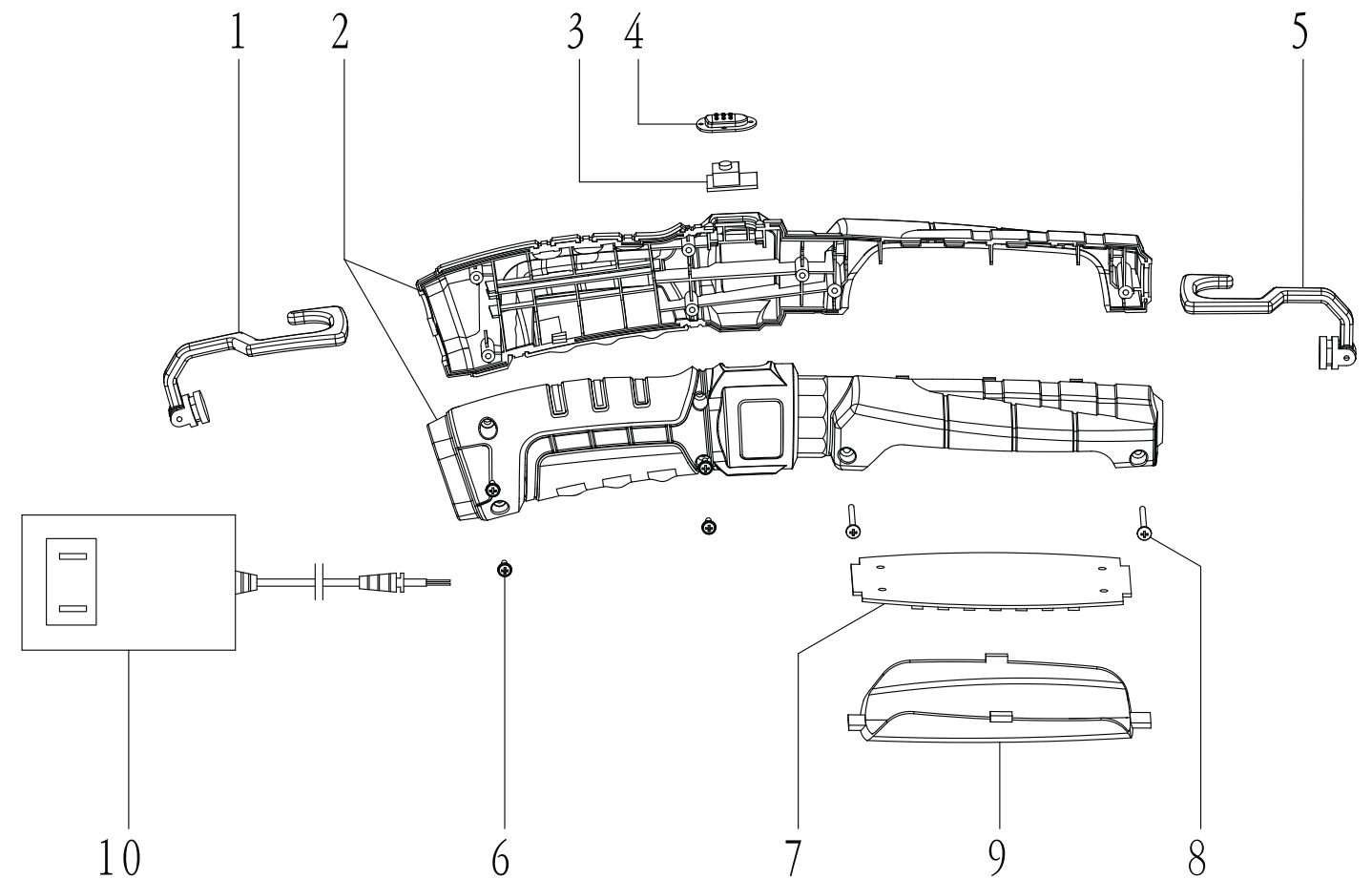
Operating instructions

- To use, plug the unit into any 110-120 VAC power source, such as a wall receptacle.
- Press the switch at the back of the handle to turn unit on, press the switch again to turn it off.

Cautions

- For indoor use only - don't use in or around, tubs, showers, sinks, pools, hot tubs, or in a wet environment
- Use only the recommended voltage and frequency requirements
- Do not use if the cords are damaged
- Keep out of reach of children
- Do not operate light with wet hands
- Keep lamp away from hot objects

Made in China to ATD Tools, Inc. Specifications
Visit us at www.atdtools.com



TEM#	ORDERING PART#	PART DESCRIPTION
1	PRT80163-01	TOP HOOK
2	PRT80163-02	HANDLES(LEFT AND RIGHT)
3	PRT80163-03	BUTTON SWITCHES (WITH PCB)
4	PRT80163-04	BUTTON
5	PRT80163-05	END HOOK
6	PRT80163-06	SCREW1
7	PRT80163-07	PCBA
8	PRT80163-08	SCREW2
9	PRT80163-09	CLEAR LENS
10	PRT80163-10	ADAPTOR(WITH CORD)