



## **ATD-80151**

52 LED Worklight w/25' 18/2 SJTW Cord

## **Owner's Manual**



### **Features and Specifications:**

- 52 Super Bright Premium White LEDs
- Reflector focuses light intensity on work area
- ABS handle with double injection, impact protection and ergonomic design provide comfortable usage
- 18/2 SJTOW 25' cord remains flexible in cold weather and water resistant
- Dual 360°swivel hooks for hanging versatility
- UL listed adaptor

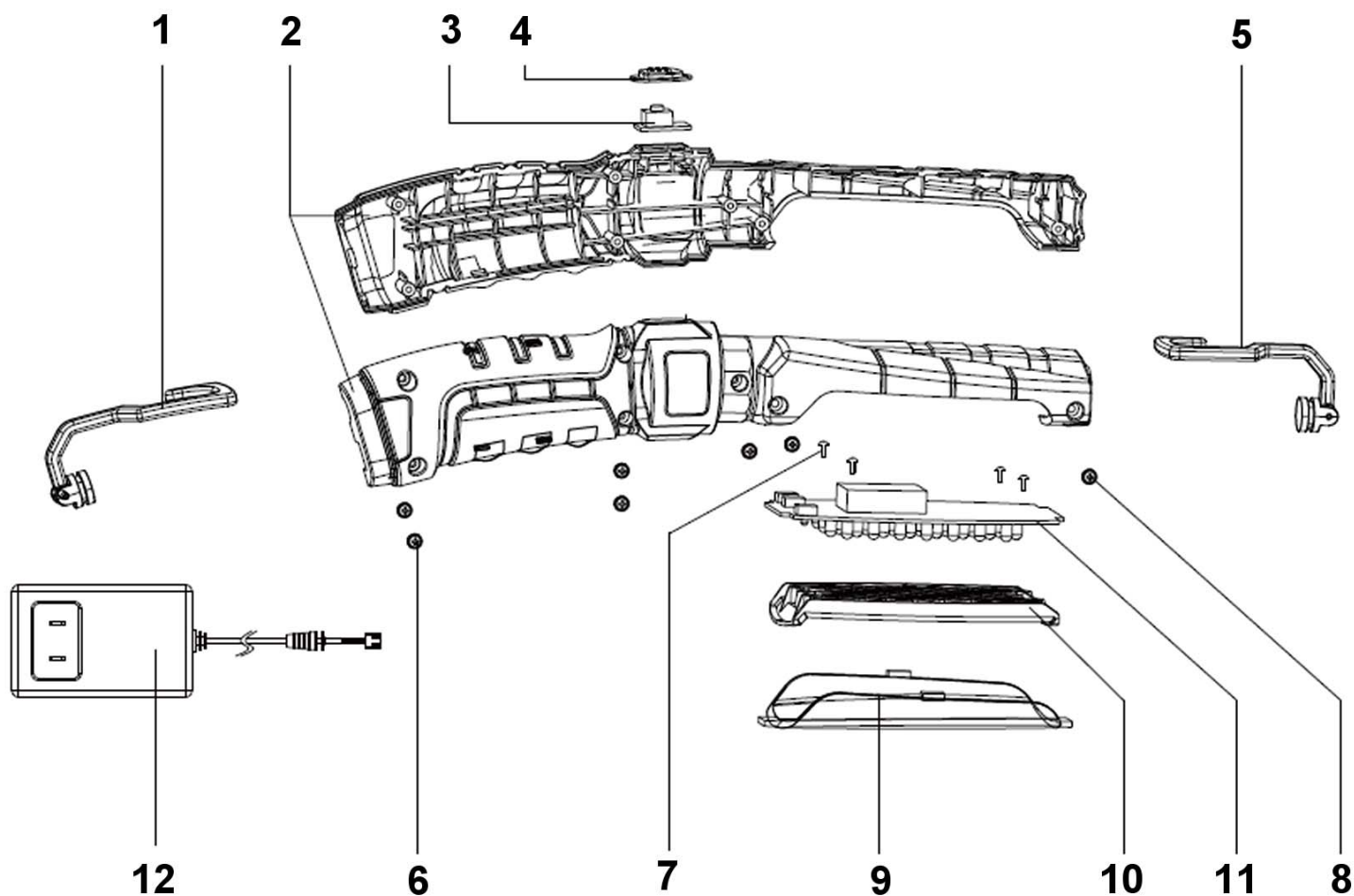
### **Operating instructions**

- To use, plug the unit into any 110-120 VAC power source, such as a wall receptacle.
- Press the switch at the back of the handle to turn unit on, press the switch again to turn it off.

### **Cautions**

- For indoor use only - don't use in or around, tubs, showers, sinks, pools, hot tubs, or in a wet environment
- Use only the recommended voltage and frequency requirements
- Do not use if the cords or clear lens are damaged
- Keep out of reach of children
- Do not operate light with wet hands.
- Keep lamp away from hot objects.





ITEM#	ORDERING PART#	PART DESCRIPTION
1	PRT80151-01	TOP HOOK
2	PRT80151-02	HANDLES (LEFT AND RIGHT)
3	PRT80151-03	BUTTON SWITCHES(WITH PCB)
4	PRT80151-04	BUTTON
5	PRT80151-05	END HOOK
6	PRT80151-06	SCREW 1
7	PRT80151-07	SCREW 2
8	PRT80151-08	SCREW 3
9	PRT80151-09	CLEAR LENS
10	PRT80151-10	REFLECTOR
11	PRT80151-11	PCBA
12	PRT80151-12	ADAPTOR (WITH CORD)