



ATD-80109 Instructions

1. Charging Instructions

Fully charge your ATD Saber Light® for 8-10 hours before use.

The battery is only 50% charged before shipping.

Be sure your ATD Saber Light® is turned off, and then plug the AC charging unit into the wall and into the bottom of your ATD Saber Light®. The green LED indicator at the top of the LED board will light up when the ATD Saber Light® is fully charged. After using your ATD Saber Light® for 2.2 hours, recharge it until the green LED indicator light comes on.

2. Operating Environment

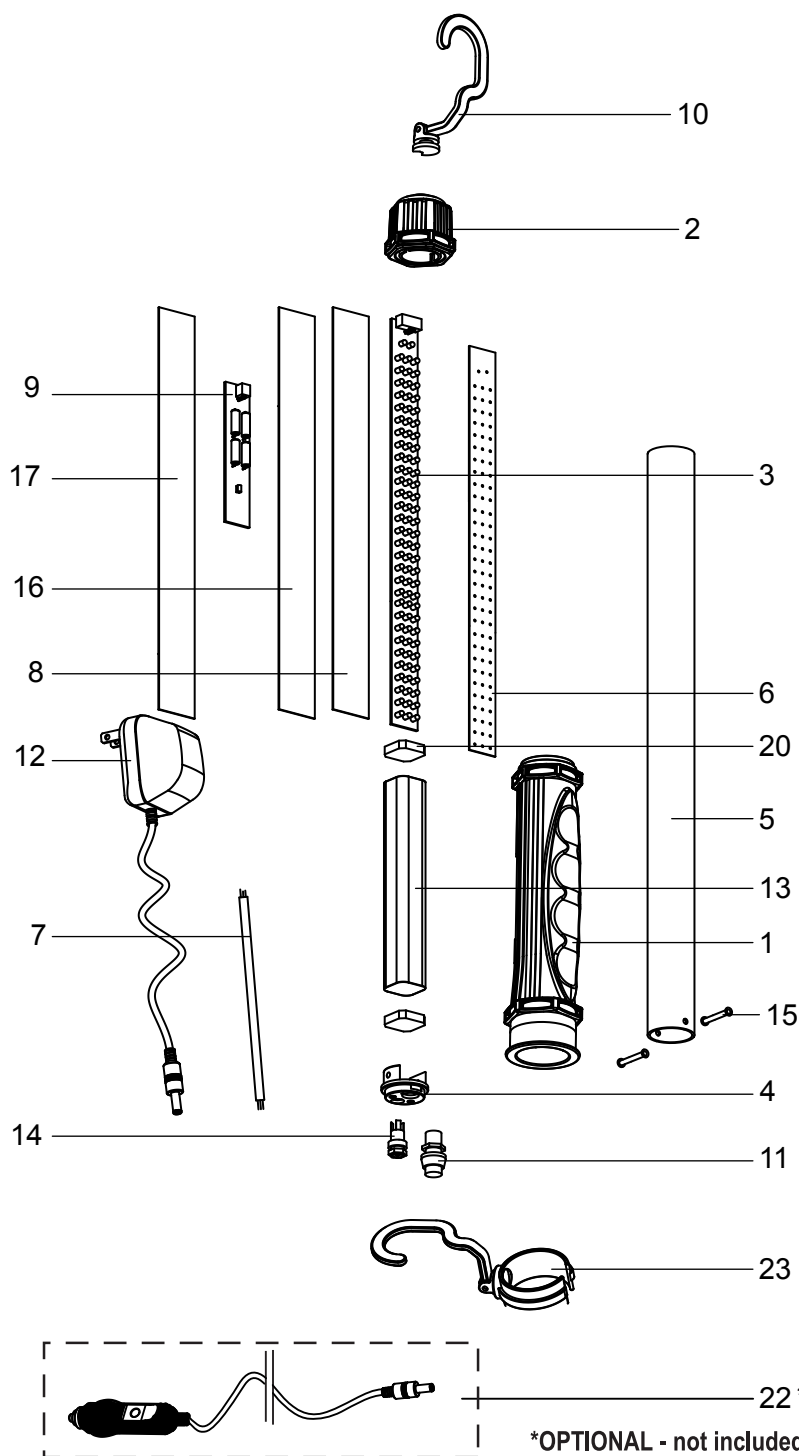
- The performance of your ATD Saber Light® will decline in temperatures exceeding 104°F (40°C) or in temperatures lower than -4°F (-20°C) due to the battery's natural inability to perform under these conditions.
- Keep your ATD Saber Light® away from heat sources.
- Keep your ATD Saber Light® away from acids and alkalines.
- Avoid bumping or dropping your ATD Saber Light®.

3. LED board replacement instructions

- When repairing your ATD Saber Light®, do not allow any metal to come in contact with the internal battery pack or the PC board and its components.
- Turn the ATD Saber Light® off.
- Remove end cap (2) from end of tube (3) using care not to crack the tube.
- Pull the LED PC board (8) from top of the tube (3).
- Disconnect the wiring connector from the LED PC board, and reconnect it to a new PC board (8).
- Carefully slide the PC board assembly (8) back into clear tube (3) and replace the end cap (2).

4. This unit is **NOT** waterproof, and is **NOT** intended to be used in showers, saunas, or any other potentially wet locations. Keep the ATD Saber Light® away from sinks, tubs, showers, etc. Retrieving **ANY** electrical appliance when they fall into the water can be fatal.
5. The ATD Saber Light® is to be used for general indoor lighting. It is **NOT** intended to be used in potentially hazardous locations such as near flammables or in explosive atmospheres.
6. Your ATD Saber Light® has a built in automatic discharge shut off feature that prevents the battery from becoming fully discharged, thus extending the battery life. After around 2.8 hours of use (after fully charging) the LED's will flash and then the light will shut off automatically to protect the battery.
7. Your ATD Saber Light® can be fully discharged, and used when plugged into the AC adapter for recharging. It will recharge while it is in use.

ATD-80109



OPTIONAL - not included

ORDERING PART#	ITEM#	PART DESCRIPTION
PRT80103-01	1	HANDLE GRIP
PRT80103-02	2	TOP CAP
PRT80109-03	3	LED PCB
PRT80100-04	4	BASE
PRT80109-05	5	CLEAR TUBE
PRT80109-06	6	REFLECTIVE PAPER
PRT80109-07	7	CONNECTION WIRE
PRT80106-08	8	INSULATION BOARD
PRT80109-09	9	PCB
PRT80103-10	10	HOOK

ORDERING PART#	ITEM#	PART DESCRIPTION
PRT80100-11	11	KNOB SWITCH
PRT80100-12	12	ADAPTER, 12V, 0.3A E149474
PRT80109-13	13	BATTERY PACK, 1.2 600mAh
PRT80100-14	14	FEMALE PLUG
PRT80100-15	15	RIVET, 3.2x9
PRT80106-16	16	INSULATING TAPE
PRT80109-17	17	LABEL
PRT80100-20	20	SHAKE-PROOF BLOCK
ATD80101	22	OPTIONAL DC CHARGING CORD
PRT80103-23	23	CLIP ON SWIVEL HOOK