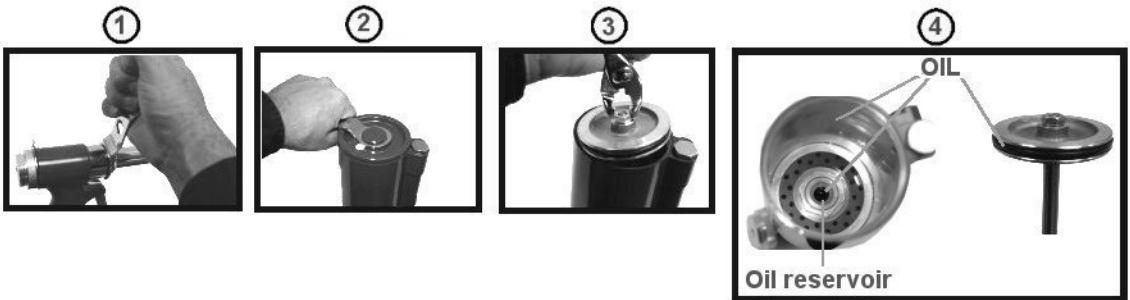


Maintenance and Oiling Of Your ATD Air Riveter

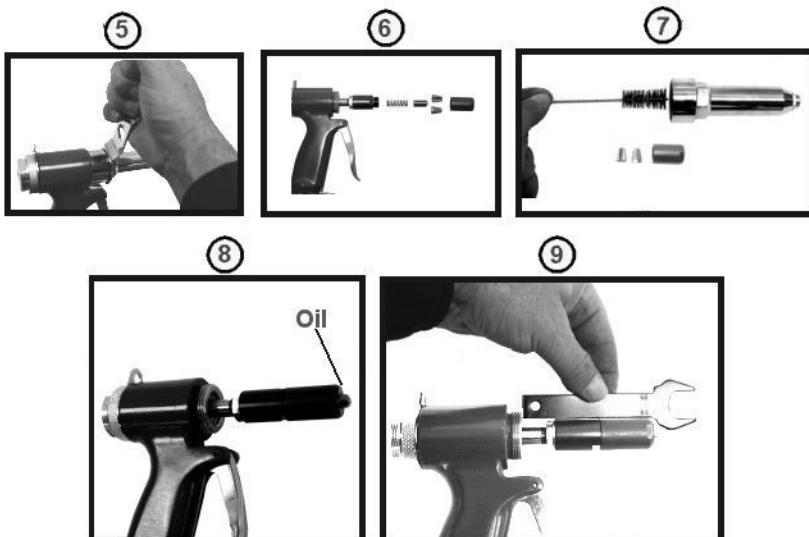
ATD-5840

1. Turn off and disconnect air supply
2. Use the spanner wrench to take apart the head (fig. 1)
3. Use the spanner wrench to open the bottom cover (fig. 2)
4. Use pliers to gently remove the cylinder piston (fig. 3)
5. Clean the inside of the body, the piston stem and piston
6. Coat inside of cylinder and piston ring and fill oil reservoir with air tool oil (fig. 4)
7. Put piston stem back into oil reservoir, tighten bottom cover
8. Use the spanner wrench to tighten the head on to the gun



Cleaning and Maintenance Of Air Riveter Head

1. Turn off and disconnect air supply
2. Use spanner wrench to take apart head (fig. 5)
3. Disassemble jaws, jaw case, jaw pusher & spring (fig. 6)
4. Clean all parts with small brush (not included) (fig. 7)
5. Oil end of jaw case and jaws (fig. 8)
6. Reassemble jaw assembly in reverse order
7. Check the length of jaw case assembly with spanner gauge

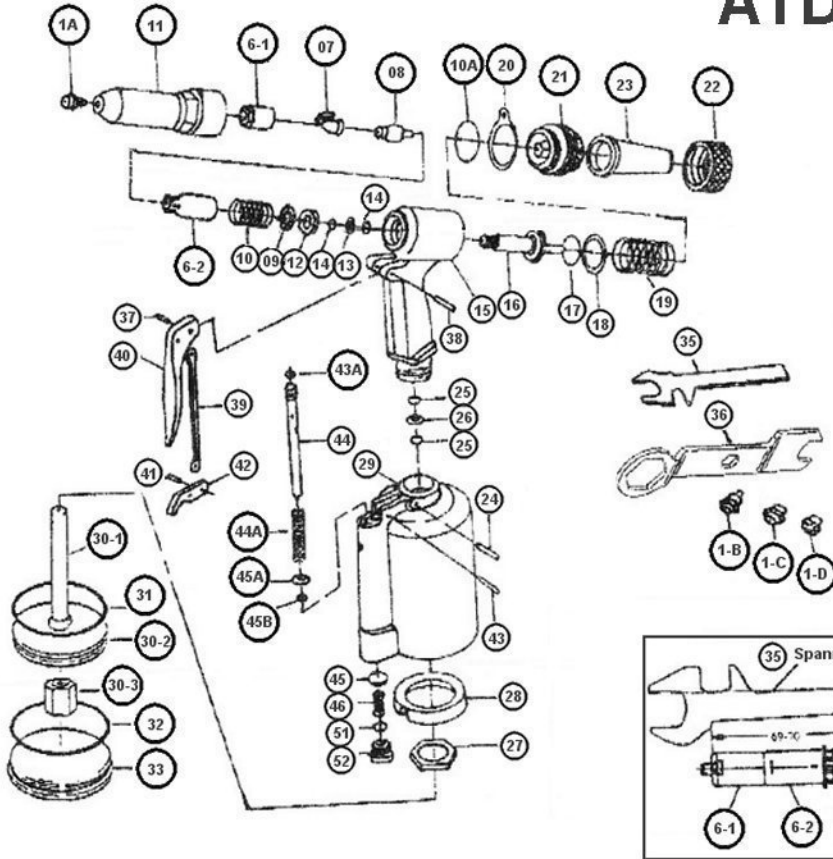


SPECIFICATIONS:

Capacity: 3/32", 1/8", 5/32", 3/16"
 Air Pressure: 60-90 PSI
 Average Air Consumption: 4 CFM
 Air Inlet: 1/4" NPT
 Hose Size: 3/8" I.D.
 Weight: 2.85 lbs.



ATD-5840



ORDERING PART#	ITEM#	PART DESCRIPTION
PRT5840-1	1A	3/16" NOSE
PRT5840-2	1B	5/32" NOSE
PRT5840-3	1C	1/8" NOSE
PRT5840-4	1D	3/32" NOSE
PRT5840-6-1	06-1	JAW CASE FRONT TART (3/32, 1/8, 5/32)
PRT5840-6-2	06-2	JAW CASE FRONT TART
PRT5840-7	07	JAW
PRT5840-8	08	JAW PUSHER
PRT5840-9	09	CASE WASHER RING
PRT5840-10	10	JAW PUSHER SPRING
PRT5840-10A	10A	FRAME CAP O-RING 27 x 2
PRT5840-11	11	FRAME HEAD
PRT5840-12	12	CASE LOCK NUT
PRT5840-13	13	BACK UP RING
PRT5840-14	14	BACK UP O-RING P12
PRT5840-15	15	FRAME
PRT5840-16	16	OIL PISTON
PRT5840-17	17	OIL PISTON O-RING P22A
PRT5840-18	18	BACK UP RING
PRT5840-19	19	RETURN SPRING
PRT5840-20	20	HANGING CLIP
PRT5840-21	21	FRAME CAP
PRT5840-22	22	FRAME CAP NUT
PRT5840-23	23	SAFETY CAP
PRT5840-24	24	SETTING SCREW PIN
PRT5840-25	25	BACK UP O-RING 12
PRT5840-26	26	BACK UP RING

ORDERING PART#	ITEM#	PART DESCRIPTION
PRT5840-27	27	FRAME LOCK NUT
PRT5840-28	28	RUBBER CUSHION
PRT5840-29	29	AIR CYLINDER
PRT5840-30-1	30-1	AIR PISTON STEM
PRT5840-30-2	30-2	AIR PISTON
PRT5840-30-3	30-3	AIR PISTON LOCK NUT
PRT5840-31	31	AIR PISTON O-RING
PRT5840-32	32	CYLINDER O-RING
PRT5840-33	33	CYLINDER CAP
PRT5840-35	35	SPANNER GAUGE
PRT5840-36	36	SPANNER
PRT5840-37	37	TRIGGER PIN
PRT5840-38	38	CONNECTOR
PRT5840-39	39	TRIGGER ROD
PRT5840-40	40	TRIGGER
PRT5840-41	41	CONNECTOR
PRT5840-42	42	TRIGGER LEVER
PRT5840-43	43	LEVER PIN
PRT5840-43A	43A	VALVE PUSHER O-RING P7
PRT5840-44	44	VALVE PUSHER
PRT5840-44A	44A	VALVE SPRING
PRT5840-45	45	VALVE
PRT5840-45A	45A	VALVE COLLAR
PRT5840-45B	45B	COLLAR O-RING P5
PRT5840-46	46	VALVE SPRING
PRT5840-51	51	VALVE CAP O-RING P11
PRT5840-52	52	VALVE CAP