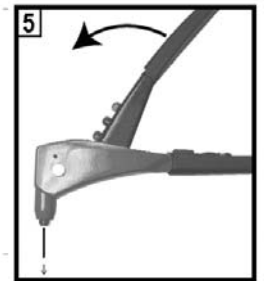
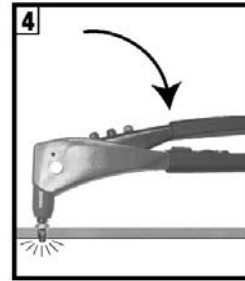
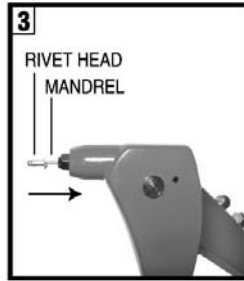
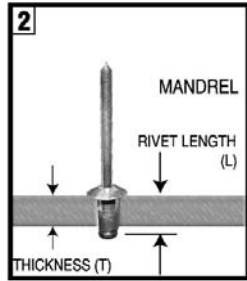
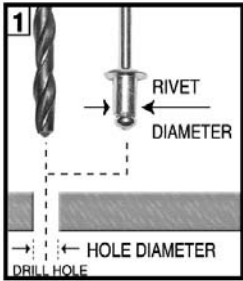




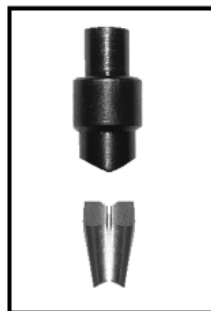
ATD-5834 Hand Riveter Instructions



1. Select appropriate rivet for application and drill same size hole through materials to be fastened.
2. Select rivet length (L) based on combined thickness (T) of materials to be fastened. It is suggested that $L-T > 0.16''$ (4.0mm)
3. Open tool handle fully and insert rivet mandrel all the way into the tool nosepiece, then insert rivet head into the prepared hole completely.
4. Squeeze tool handle until rivet mandrel breaks off. If more than one squeeze is required, open tool handle fully and squeeze again.
5. Open tool handle fully to eject rivet mandrel from tool.

HOW TO CHANGE JAWS

1. Close tool handle completely, keeping handle closed with tape or a chain.
2. Remove retaining screw with wrench then remove jaw pusher spring
3. Clean or replace jaws, oiling outside of jaws before reassemble
4. Reassembly is the reverse of above steps. Be sure that the beveled end of jaw pusher fits into bevel on the jaws.



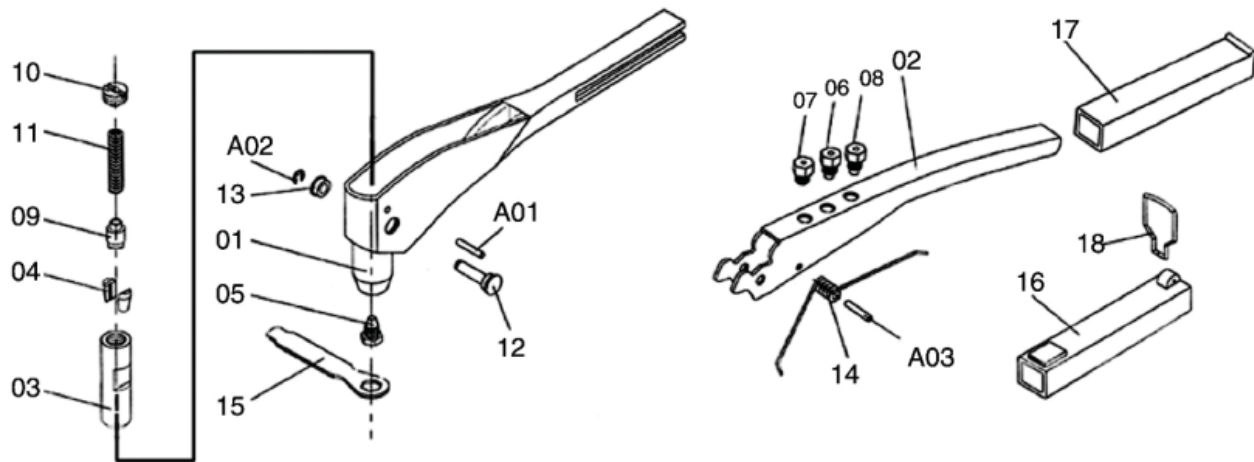
WARNING



Always wear ANSI approved safety goggles when using this product. Normal use of this product is likely to expose the user to dust and/or microscopic particles containing chemicals known to the State of California to cause cancer, birth defects or other reproductive harm. Wash hands after handling. Always wear appropriate safety equipment and clothing when using this product. Study, understand and follow all instructions provided with this product.

ATD®

ATD-5834



ITEM#	ORDERING PART#	PART DESCRIPTION
1	PRT5834-01	BODY
2	PRT5834-02	HANDLE
3	PRT5834-03	JAW CARRIER
4	PRT5834-04	JAW
5	PRT5834-05	NOSEPIECE -3/16"(4.8/5.0MM)
6	PRT5834-06	NOSEPIECE -5/32"(4.0MM)
7	PRT5834-07	NOSEPIECE -3/32"(2.28MM)
8	PRT5834-08	NOSEPIECE -1/8"(3.3MM)
9	PRT5834-09	PUSHER
10	PRT5834-10	SCREW
11	PRT5834-11	SPRING
12	PRT5834-12	CLIP PIN
13	PRT5834-13	CLIP BARREL
14	PRT5834-14	SPRING
15	PRT5834-15	WRENCH
16	PRT5834-16	PLASTIC GRIP
17	PRT5834-17	PLASTIC GRIP
18	PRT5834-18	POT HOOK
A01	PRT5834-A01	SPRING PIN
A02	PRT5834-A02	CLIP
A03	PRT5834-A03	SPRING PIN