



# Hydraulic Body Repair Kits

## Operating Instructions & Parts Manual

**Model Number**

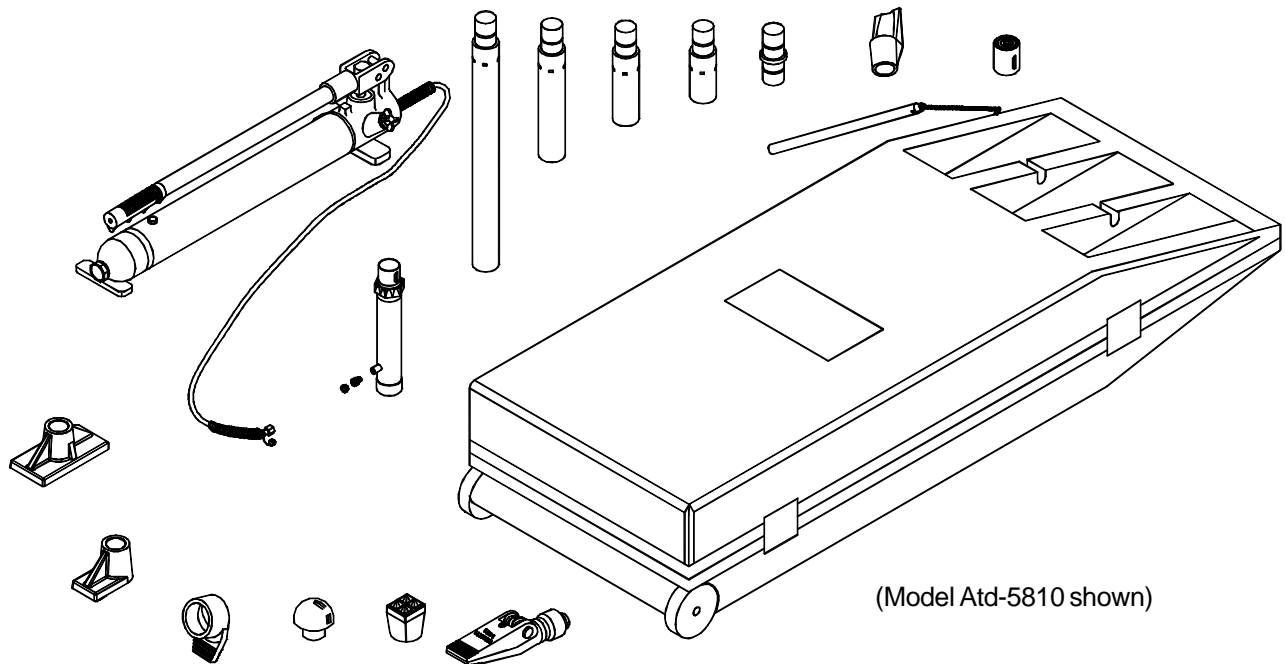
**Atd-5800**

**Atd-5810**

**Capacity**

**4 Ton**

**10 Ton**



Atd Tools Inc.  
114 I-70 Trade Center Drive, St. Peters, MO 63376

OIPM#5800-10-03  
Printed in China

**Save these instructions.** For your safety, read and understand the information contained within. The owner and operator shall have an understanding of this product and safe operating procedures before attempting to use this product. Instructions and Safety information shall be conveyed in the operators native language before use of this product is authorized. Make certain that the operator thoroughly understands the inherent dangers associated with the use and misuse of the product. If any doubt exists as to the safe and proper use of this product as outlined in this factory authorized manual, remove from service. **Inspect before each use.** Do not use if broken, bent, cracked or otherwise damaged parts are noted. If any component of this product has been or suspected to have been subjected to a shock load (a load dropped suddenly, unexpectedly upon it), discontinue use until checked out by an authorized factory service center. Owners and operators of this equipment shall be aware that the use and subsequent repair of this equipment may require special training and knowledge. It is recommended that an annual inspection be done by qualified personnel and that any missing or damaged parts, decals, warning / safety labels or signs be replaced with factory authorized replacement parts only. Any component of this Body Repair Kit that appears to be damaged in any way, is worn or operates abnormally shall be removed from service immediately until such time as it can be repaired/replaced. Labels and Owner's Manuals are available from manufacturer (see Replacement Parts, pages 5, 6).

### PRODUCT DESCRIPTION

The Atd Tools Hydraulic Body Repair Kits are designed to be used for pushing, spreading, and pressing of vehicle body panels as well as various component parts and assemblies. A variety of attachments are included. Atd-5800 pump is rated 8,000 PSI, Atd-5810 is rated 10,000 PSI. Rams are rated from 4 to 10 tons. **WARNING: when extension tubes and/or offset attachments are used, the rated capacity is always reduced by 50 % for each tube or offset attachment connected.** See Parts Section for identification of "offset" attachments.

### SPECIFICATIONS

Model	Capacity	Blow Mold Case		Number of Attachments	Operating Force
		Closed Height	Extended Height		
Atd-5800	4 Ton	11"	15 3/4"	14	~127.6 Lbs
Atd-5810	10 Ton	13 5/8"	19 3/4"	13	~134.2 Lbs

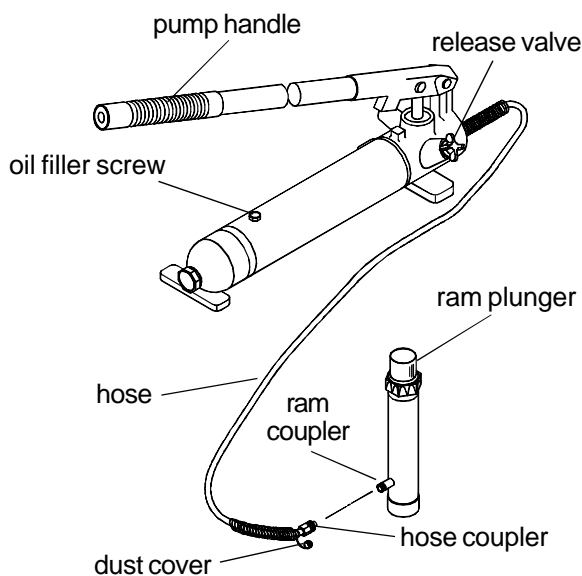


Figure 1 - Atd-5800 and Atd-5810 Nomenclature

### BEFORE USE

Use Fig. 1 as reference

1. Inspect before each use. Do not use if bent, broken, leaking or damaged components are noted.
2. Ensure that product and application are compatible.
3. Check to ensure that all parts of your kit are included (see illustration and parts list).
4. Carefully remove the dust caps and plugs from hose coupler and ram coupler.
5. Connect hose coupler to ram coupler, ensure that there are no fluid leaks.
6. Locate and open release valve. Close release valve clockwise and pump handle until ram is fully extended, then open release valve counter-clockwise until ram has fully retracted.
7. With ram fully retracted and release valve open, place pump in horizontal position. Locate and open oil filler screw (on reservoir body, near the back). This will release air trapped within the reservoir. Retighten the oil filler screw.

## GENERAL SAFETY INFORMATION

Read and understand all instructions and warnings provided with and on this product before use.

1. Ensure that attachments are fully engaged before applying load.
2. Ensure that load is centrally applied to attachment or ram saddle. Do not load off center.
3. Always monitor the force applied to workpiece by using a load cell and indicator or you may monitor pressure developed in the ram by using an inline pressure gauge, then calculate the applied force using the formula:  $F = P \times A$ , where  $F =$  lbs force,  $P =$  pressure in PSI, and  $A =$  effective ram area in  $\text{in}^2$ .  
Ram Area of Atd-5800 is: 1.00  $\text{in}^2$   
Ram Area of Atd-5810 is: 2.41  $\text{in}^2$
4. If bowing or bending of ram or any attachment occurs during use, "**STOP**", release pressure immediately and reconsider application. Application may not be compatible with product, a ram kit with a higher capacity may be needed.

## ⚠ WARNING

Read, understand, and follow **all** printed materials provided with and on this equipment before use. Do not overload beyond rated capacity. Use only on hard, level surfaces capable of sustaining the load. Do not open oil filler screw unless ram is fully retracted. Always wear safety glasses when using this equipment. Do not use as a vehicle lifting device or as a vehicle support. When extension tubes and/or offset attachments are used, the rated capacity is always reduced by 50% for each tube or attachment connected. **Any** attachment that is not loaded centrally, as through the centerline of the ram, is considered to be "offset". See Parts Section for identification of offset attachments. Failure to heed these warnings may result in personal injury/property damage.

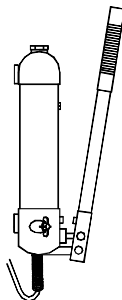
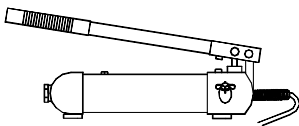


Figure 2 - Horizontal and Vertical position

## OPERATION

**Note:** Inspect before each use for evidence of fluid leaks, damaged hydraulic fittings, bent or broken attachments and missing parts.

1. Locate and close release valve by turning it clockwise until firmly closed. (Do not over tighten)
2. Operate by pumping handle. This will send fluid from the pump reservoir into the high pressure hose assembly and into the ram assembly.
3. Continue pumping until ram reaches desired position.

**Note:** Pump may be used in horizontal and vertical position as illustrated (See figure. 2).

### To Release Pressure on work piece:

**Slowly, carefully** turn the release valve counter-clockwise until ram retracts to desired position. **Never turn release valve more than 1/2 full turn.** The ram return system is spring loaded and the release valve system is metered, allowing controlled retraction of the ram.

## MAINTENANCE

**Important:** Use only a good grade hydraulic jack oil. Avoid mixing different types of fluid and Never use brake fluid, turbine oil, transmission fluid, motor oil or glycerin. Improper fluid can cause premature failure of the ram and the potential for sudden and immediate loss of load. We recommend Mobil DTE 13M or equivalent.

### Adding oil

1. With ram fully lowered, set pump unit in its normal, level position. Locate and remove oil filler screw (see Figure 1).
2. Fill until oil is within 3/8" of the oil filler screw hole opening, re-install oil filler screw.

### Changing oil

For best performance and increased system life, replace the complete fluid supply at least once per year.

1. With ram fully lowered, remove the oil filler screw from the pump reservoir as above.
2. Lay the pump on its side and drain the fluid into a suitable container.

**Note:** Dispose of hydraulic fluid in accordance with local regulations.

3. Set pump in its level upright position.
4. Fill with good quality jack oil to within 3/8" of the oil filler screw hole opening. Reinstall oil filler screw.

**Lubrication**

A coating of light lubricating oil to pivot points, axles and hinges will help to prevent rust and assure that pump assemblies move freely.

**Cleaning**

Periodically check the pump piston and ram for signs of rust or corrosion. Clean as needed and wipe with an oily cloth.

**Note:** Never use sandpaper or abrasive material on these surfaces !

**Storage**

When not in use, store with the pump piston and ram fully retracted.

**TROUBLESHOOTING**

Symptom	Possible Causes	Corrective Action
Ram will not extend	<ul style="list-style-type: none"> <li>• Release valve not tightly closed</li> <li>• Overload condition</li> </ul>	<ul style="list-style-type: none"> <li>• Ensure release valve tightly closed</li> <li>• Remedy overload condition</li> </ul>
Ram *bleeds off after extending	<ul style="list-style-type: none"> <li>• Release valve not tightly closed</li> <li>• Hydraulic unit malfunction</li> </ul>	<ul style="list-style-type: none"> <li>• Ensure release valve tightly closed</li> <li>• Replace Ram and / or Pump</li> </ul>
Ram will not lower after unloading	<ul style="list-style-type: none"> <li>• Reservoir overfilled</li> <li>• Ram damaged</li> </ul>	<ul style="list-style-type: none"> <li>• Drain fluid to proper level</li> <li>• Replace ram</li> </ul>
Poor performance	<ul style="list-style-type: none"> <li>• Fluid level low</li> <li>• Air trapped in system</li> </ul>	<ul style="list-style-type: none"> <li>• Ensure proper fluid level</li> <li>• With ram fully retracted, remove oil filler screw to let pressurized air escape, then reinstall oil filler screw</li> </ul>
Will not lift to full extension	<ul style="list-style-type: none"> <li>• Fluid level low</li> </ul>	<ul style="list-style-type: none"> <li>• Ensure proper fluid level</li> </ul>

\* "Bleeding off" means that ram begins to slowly retract rather than maintain position.

**ONE YEAR LIMITED WARRANTY**

For a period of one (1) year from date of purchase, **Atd Tools Inc.** will repair or replace, at its option, without charge, any of its products which fails due to a defect in material or workmanship, or which fails to conform to any implied warranty not excluded hereby.

Performance of any obligation under this warranty may be obtained by returning the warranted product, freight prepaid, to **Atd Tools Inc.** Warranty Service Department, 114 I-70 Trade Center Drive, St. Peters, MO 63376.

Except where such limitations and exclusions are specifically prohibited by applicable law, (1) the CONSUMER'S SOLE AND EXCLUSIVE REMEDY SHALL BE THE REPAIR OR REPLACEMENT OF DEFECTIVE PRODUCTS AS DESCRIBED ABOVE, and (2) **Atd Tools Inc.** SHALL NOT BE LIABLE FOR ANY CONSEQUENTIAL OR INCIDENTAL DAMAGE OR LOSS WHATSOEVER, and (3) THE DURATION OF ANY AND ALL EXPRESSED AND IMPLIED WARRANTIES, INCLUDING WITHOUT LIMITATION, ANY WARRANTIES OF MERCHANTABILITY AND FITNESS FOR A PARTICULAR PURPOSE, IS LIMITED TO A PERIOD OF ONE (1) YEAR FROM DATE OF PURCHASE.

Some states do not allow limitations on how long an implied warranty lasts, so the above limitation may not apply to you. Some states do not allow the exclusion or limitation of incidental or consequential damages, so the above limitation or exclusion may not apply to you. This warranty gives you specific legal rights, and you may also have other rights which vary from state to state.

**REPLACEMENT PARTS**

Available Parts: Please refer to the Parts drawing when ordering parts. Not all components of this kit are replacement items, but are illustrated as a convenient reference of location and position in the assembly sequence. When ordering parts, give Model number, serial number and description below. Call or write for current pricing:  
 Atd Tools Inc. 114 I-70 Trade Center Drive, St. Peters, MO 63376 Tel:(636)272-9050 Fax:(636)272-9044

Model No. Atd-5800

<u>Part No.</u>	<u>Description</u>	<u>Quantity</u>
1	extension tube (19-1/2")	1
2	extension tube (16-1/2")	1
3	extension tube (8-1/2")	1
4	extension tube (6-1/8")	1
5	extension tube (3")	1
6	male connector	1
7	wedge head (offset)	1
8	serrated saddle	1
9	flat base	1
10	plunger toe (offset)	1
11	ram toe (offset)	1
12	rubber head	1
13	combination head	1
14	hydraulic spreader (1000 lb. capacity)	1
15	dust cover - hose	1
16	dust cover - ram	1
17	hose coupler	1
18	ram coupler	1
19	ram	1
20	release valve knob	1
21	pump handle	1
22	hose	1
23	oil filler screw	1
24	pump assembly	1
25	blow mold case	1
-	label(s) (not shown)	2
-	manual (OIPM #5800-10-03)	1

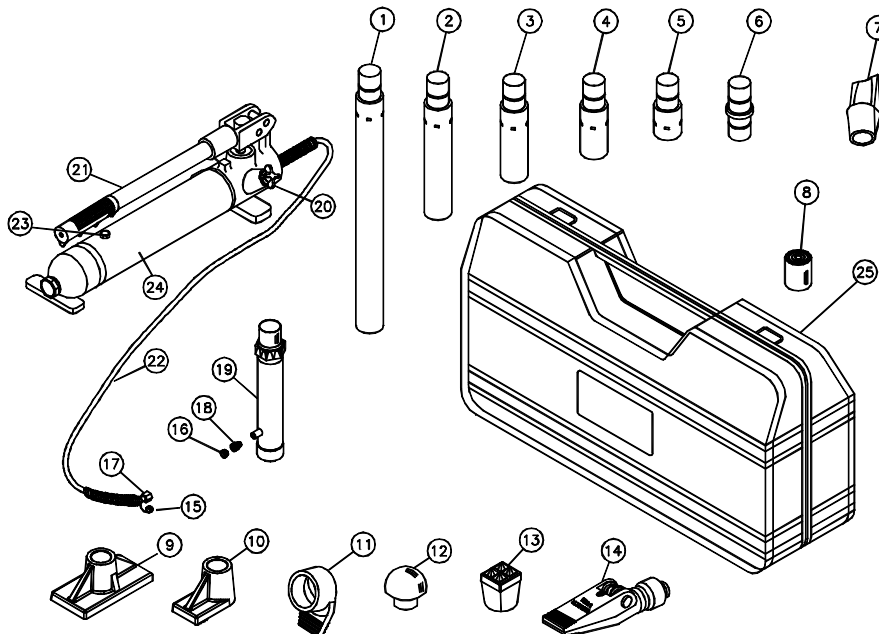


Figure 3 - Replacement Parts Illustration for Model Atd-5800

Model No. Atd-5810

<u>Part No.</u>	<u>Description</u>	<u>Quantity</u>
1	extension tube (27")	1
2	extension tube (18")	1
3	extension tube (10")	1
4	extension tube (4-1/8")	1
5	male connector	1
6	wedge head (offset)	1
7	serrated saddle	1
8	flat base	1
9	plunger toe (offset)	1
10	ram toe (offset)	1
11	rubber head	1
12	combination head	1
13	hydraulic spreader (1000 lb. capacity)	1
14	dust cover - hose	1
15	dust cover - ram	1
16	hose coupler	1
17	ram coupler	1
18	ram	1
19	release valve knob	1
20	pump handle	1
21	hose	1
22	oil filler screw	1
23	pump assembly	1
24	blow mold case	1
25	iron chain	1
26	retainer	1
-	label(s) (not shown)	2
-	manual (OIPM #5800-10-03)	1

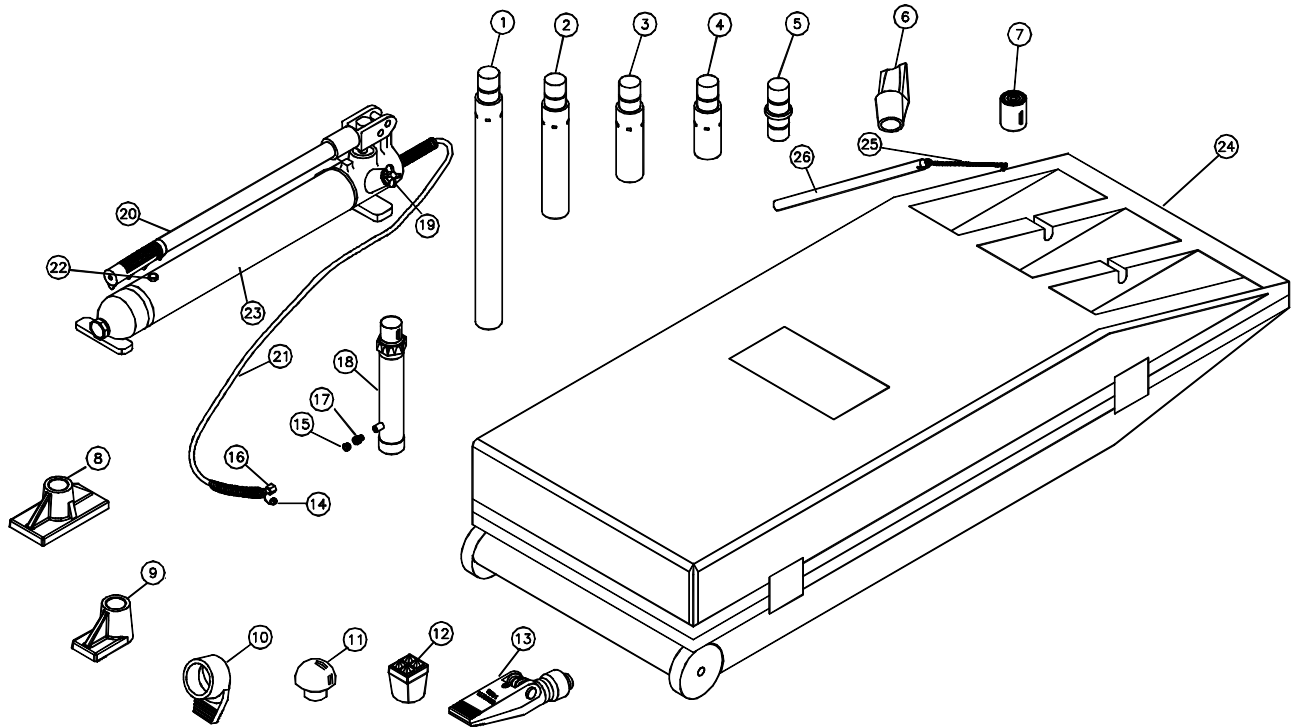


Figure 4 - Replacement Parts Illustration for Model Atd-5810

# Notes

---

---

---

---

---

---

---

---

---

---

---

---

---

---

---

---

---

---

---

---

---

---

---

---

---

---

---

---

---

---



