



ATD-55048 3-48V Digital Master Circuit Tester Kit



Product Description

Interchangeable probe circuit tester with an easy to read back lit LCD that displays voltage reading (3-48V range). Includes an assortment of probes, clips and slip on adapters. Circuit tester has a 12' long retractable ground lead.

- Two interchangeable probes
- Easy to read backlit LCD display, 3-48 volt range
- Fast, accurate diagnostics
- Blow molded case



California Prop 65 WARNING:

This product contains chemicals including lead, known to the state of California to cause cancer, birth defects, or other reproductive harm. **Wash hands after handling.**

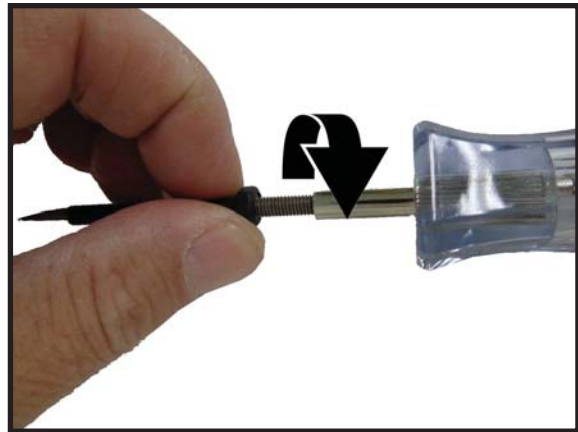
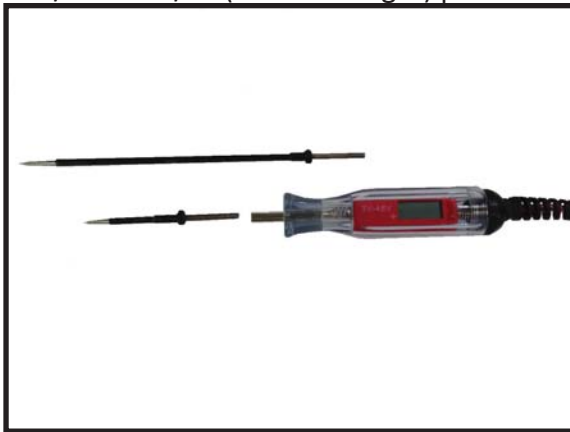
Safety Precautions

Caution: To help prevent personal injury

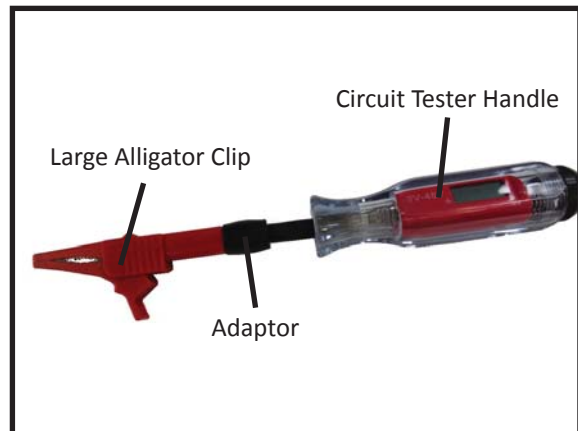
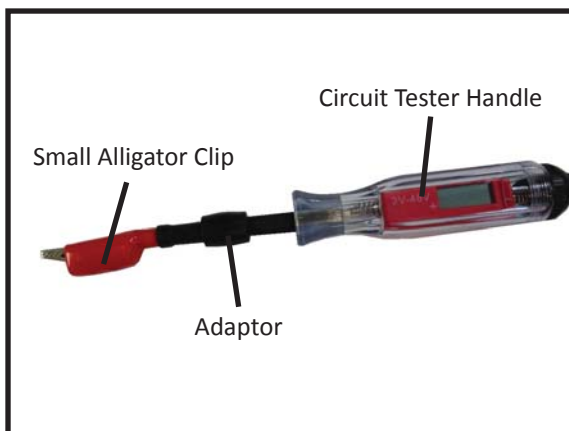
- Do not use the tool outside of the designed intent.
- Never modify the tool for any other purpose, or for its use.
- Always work in a clean, safe, well-lit, organized and adequately equipped area.
- Do not begin repairs without assurance that vehicle is in secure position, and will not move during repair.
- Keep away from children, as this tester contains sharp probes.
- This product contains chemicals, including lead, known to the state of California to cause cancer, and birth defects or other reproductive harm. Wash hands after handling.

OPERATION:

The 2-1/4" & 6-1/2" (useable length) probes screw on to the circuit tester handle as shown below.



The small and large alligator clips slide onto the adaptor, then into the circuit tester handle as shown below.



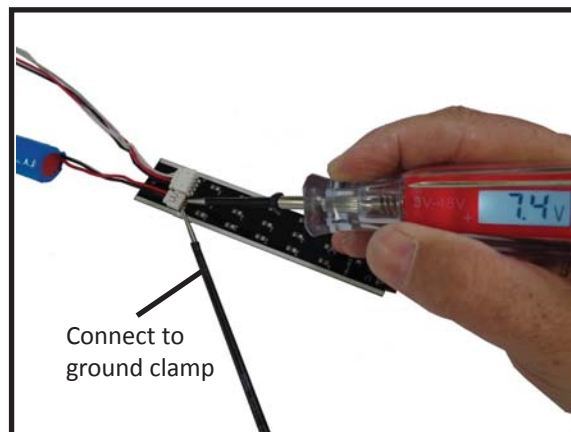
Ground the tester using the grounding clamp at the end of the circuit tester handle. Attach it securely to a metal bracket that has an electrical ground, or straight to the negative battery terminal, if it is accessible.

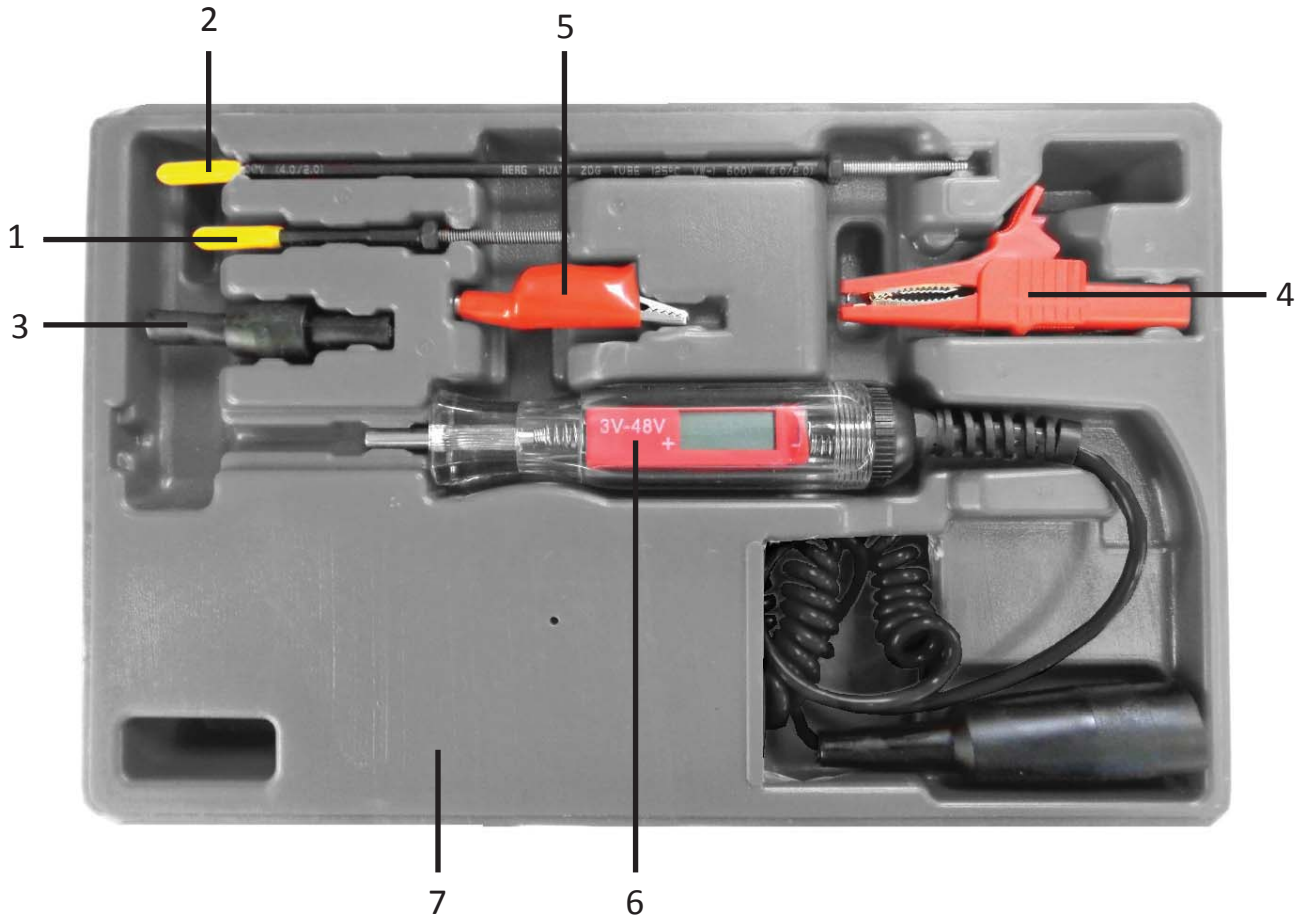


Using whichever combination of probes or clips, you are now ready to test your circuit. Touch your probe tip to the electrical point that is in question to get your voltage reading.



For smaller circuits where exacting precision is required, you can use one probe as a ground probe, connecting the ground to the end of the probe, while using the other probe as the positive lead.





ITEM#	ORDERING PART#	PART DESCRIPTION
1	PRT55048-01	INTERCHANGEABLE PROBE (2-1/4")
2	PRT55048-02	INTERCHANGEABLE PROBE (6-1/2")
3	PRT55048-03	ADAPTOR
4	PRT55048-04	CLIP
5	PRT55048-05	CLIP WITH SLEEVE
6	PRT55048-06	CIRCUIT TESTER
7	PRT55048-07	BLOW MOLDED CASE