



ATD-3718

Auto Darkening & Solar Power Welding Helmet

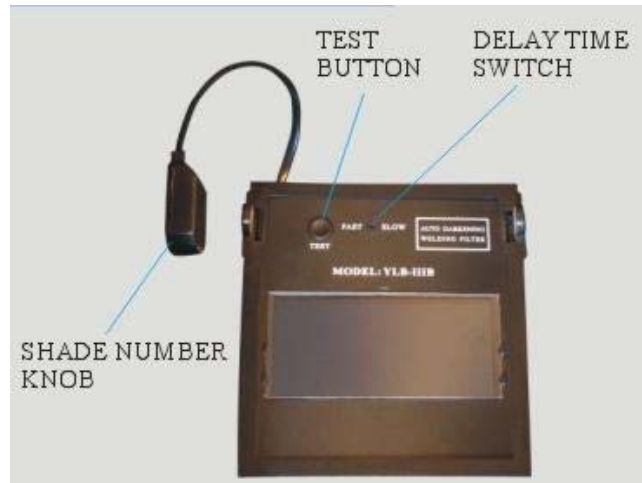


READ ALL INSTRUCTIONS BEFORE OPERATING

This unit involves a helmet and an auto-darkening welding lens. It protects your eyes and face from sparks, spatter and harmful radiation (UV&IR) under normal welding conditions. It is ready to use without the installation of batteries, as it is solar powered. But before using, you must read the following carefully.

Feature

- The auto-darkening welding lens will automatically darken to its selected shade number when the light from an arc is detected in 1/10000 second.
- The unit is powered by solar cell, the solar cell eliminated batteries and on/off switch.
- The shade number of the unit is adjustable from 9 to 13 according to your working conditions.
- Delay switch allows you to choose the time from dark to light. There are two modes in this unit, "FAST" and "SLOW".



Picture 1.Lens

Preparation:

This unit is ready to use without battery replacement and on/off switch. To prepare for use, perform the following steps:

- Step 1: Remove the protection film from both the inner and outer side of the cartridge.
- Step 2: Turn the shade number to the correct position.
- Step 3: Choose the correct delay time, "FAST" or "SLOW"
- Step 4: Adjust headband so that you feel comfortable and the viewing area is OK.
- Step 5: Push the "TEST" button once, the viewing area will be dark, or you can not use the helmet.
- Step 6: Now you can begin to work.

Maintenance

1. When the front plastic safety plate is damaged (cracked, scratched, soiled, or pitted), it must be replaced as soon as possible. The steps are as follows:

- Step 1: Use two fingers to push the top ear of the attachment inside and pull up the attachment, if it is too tight, you can loose one side first and then the other side.
- Step 2: Push the lens from the front plastic safety plate and the lens will be out from the square of the helmet.
- Step 3: Put a new plastic plate in the cassette square.

·Step 4: Put the lens back. First put the bottom edge of the attachment and lens together. Then put them down into the cassette square of the helmet, with the two holes of them onto the two knots of the cassette square. At the end, put the ear of the attachment directly down. You can hear a “click”, that is ok.



Picture 2. Pull out and install lens

2. Replace the back plastic protective plate when necessary.
3. Don't place the helmet near a heat source or a humid environment.
4. Don't use alcohol or other solvents to clean the lens. Don't immerse the lens in the water or other liquids.
5. Wipe your front protective plates and helmet by cloth dampened by mild soap and water solution. Allow to air dry. The lens may be cleaned with dry, soft cloth.
6. Use the original manufacture's spare parts to replace worn or damaged ones.

Troubleshooting

1. Slightly lighter shaded area at the edges and corners of the lens.
 - That is normal and there is no influence for your working. The reason for this is because the performance of Lens .
2. The lens doesn't darken or flickers.
 - The front plastic protective plate is soiled or damaged, change a new one.
 - Sensors are soiled, clean the surface of the sensors.
3. The switching time is too slow.
 - The operating temperature could be too low, don't use under the temperature -5°C (23°F).
4. The vision through the viewing window is poor.
 - The front or inner plastic protective plate is soiled or damaged, replace it.
 - The ambient light is not sufficient.
 - The shade number is set incorrectly, reset the shade number.

5. The welding helmet slips.

·The headband is not adjusted properly, or the directional pin is not insert into the adjustable limitation washer.

6. Push the "TEST" button, but the viewing window is still light.

·The lens must be out of work and you must stop using it.

NOTE: DO NOT USE THIS UNIT IF ANY OF THE ABOVE PROBLEMS CANNOT BE CORRECTED

Technical Data

·Viewing Area:100×60mm

·Shade Number:9-13 selectable when dark, fixed at 4 when light.

·Switching Time:1/10,000 second

·Delay Time:0.2s at "FAST", 0.5s at "SLOW"

·Protective Plate:133×114mm,front plate;108×63mm, back plate

·UV/IR Protection: Up to shade No.14(DIN) at all time

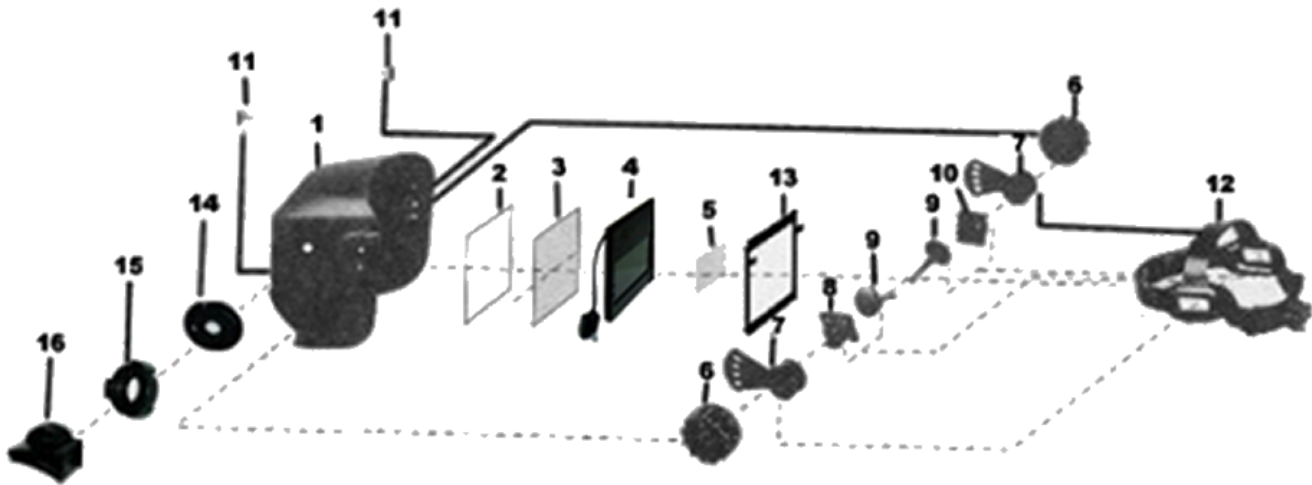
·Operation Temperature:-5°C to 55°C

·Storage Temperature: -20°C to 70°C

·Weight:620g

ATD[®]

ATD-3718



ITEM#	ORDERING PART#	PART DESCRIPTION
1	PRT3718-01	HELMET
2	PRT3718-02	RUBBER SQUARE RING WASHER
3	PRT3718-03	FRONT PLASTIC PROTECTIVE PLATE - 5.25" x 4.5"
4	PRT3718-04	LENS
5	PRT3718-05	INSIDE PLASTIC PROTECTIVE PLATE - 4.25" x 2.5"
6	PRT3718-06	BLOCK NUT
7	PRT3718-07	ADJUSTABLE LIMITATION WASHER
8	PRT3718-08	LIMITATION WASHER (R)
9	PRT3718-09	SCREW
10	PRT3718-10	LIMITATION WASHER (L)
11	PRT3718-11	DIRECTIONAL PIN SCREW
12	PRT3718-12	HEADBAND
13	PRT3718-13	ATTACHMENT
14	PRT3718-14	POSITION CIRCLE PLATE
15	PRT3718-15	NUT
16	PRT3718-16	SHADE ADJUST KNOB