



ATD-16812

WATERBORNE HVLP GRAVITY FEED SPRAY GUN INSTRUCTION MANUAL



Specifications

- Nozzle Size: 1.2mm
- Cup Size: .6 Liter
- Maximum Air Inlet Pressure: 2 bar (29 PSI)
- Average Air Consumption: 14 CFM@29 PSI
- Air Inlet Thread: ¼" NPSM
- Net Weight with Cup: 1.8lbs





General Safety Precautions

- During cleaning and flushing, solvents can be forcefully expelled from fluid and air passages. Some solvents can cause eye injury.
- Be sure all others in the area are wearing impact resistant eye and face protection.
- Even small projectiles can injure eyes and cause blindness.
- Air under pressure can cause severe injury. Always shut off air supply, drain hose of air pressure and disconnect tool from air supply when not in use, before changing accessories or when making repairs. Never direct air at yourself or anyone else. Whipping hoses can cause serious injury. Always check for damaged or loose hoses and fittings. Never use quick change couplings at tool. They add weight and could fail due to vibration. Instead, add a hose whip and connect coupling between air supply, and hose whip, or between hose whip and leader hose. Do not exceed maximum air pressure of 63 PSI.
- Always use tool a safe distance from other people in work area.
- Maintain tools with care Keep tools clean and oiled for best and safest performance. Follow instructions for lubricating and changing accessories. Wiping or cleaning rags and other flammable waste materials must be placed in a tightly closed metal container and disposed of later in the proper fashion.
- Don't over reach. Keep proper footing and balance at all times. Slipping, Tripping and Falling can be a major cause of serious injury or death. Be aware of excess hose left on the walking or work surface.
- Don't force tool. It will do the job better and safer at the rate for which it was designed.
- Don't abuse hoses or connectors. Never carry tool by the hose or yank it to disconnect from power supply. Keep hoses from heat, oil and sharp edges. Check hoses for weak or worn condition before each use, making certain that all connections are secure.
- High sound levels can cause permanent hearing loss. Protect yourself from noise. Noise levels vary with work surface. Wear ear protection.
- When possible, secure work with clamps or vise so both hands are free to operate tool.
- Repetitive work motions, awkward positions and expo sure to vibration can be harmful to hands and arms.
- Avoid inhaling dust or handling debris from work processes which can be harmful to your health.
- This tool is not intended for use in explosive atmospheres and is not insulated for contact with electric power sources.
- Solvent and coatings can be highly flammable or combustible especially when sprayed. Adequate exhaust must be provided to keep air free of accumulations of flammable vapors.
- Smoking must never be allowed in the spray area.
- Fire extinguishing equipment must be present in the spray area.
- Never spray near sources of ignition such as pilot lights, welders, etc.
- Halogenated hydrocarbon solvents – for example; methylene chloride, are not chemically compatible with the aluminum that might be used in many system components. The chemical reaction caused by these solvents reacting with aluminum can become violent and lead to an equipment explosion. Guns with stainless steel fluid passages may be used with these solvents. However, aluminum is widely used in other spray application equipment - such as material pumps, cups and regulators, valves, etc. Check all other equipment items before use and make sure they can also be used safely with these solvents. Read the label or data sheet for the material you intend to spray. If in doubt as to whether or not a coating or cleaning material is compatible, contact your material supplier.
- Sprayed materials may be harmful if inhaled, or if there is contact with the skin. Adequate exhaust must be provided to keep the air free of accumulations of toxic materials. Use a mask or respirator whenever there is a chance of inhaling sprayed materials. The mask must be compatible with the material being sprayed and its concentration.

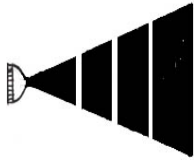


Symptom

Problem

Solution

FLUTTERING OR SPITTING



Dry or worn needle packing seat permitting air to seep into fluid passage.

Paint cup or joint cap leaking.

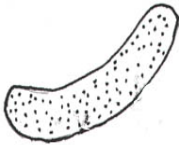
Packing fluid needle too loose.

Tighten, lubricate or change needle packing.

Tighten or repair them.

Tighten or repair them.

PATTERN IS ARCED



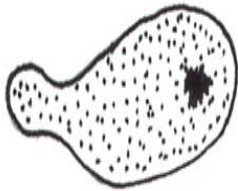
Dust or other foreign matter on air cap horn holes.

Uneven volume of fluid from air cap horn holes.

Remove obstructions from air cap horn holes.

Remove obstructions from air cap horn holes.

PATTERN IS NOT EVENLY SPREAD



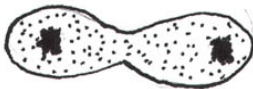
Material build up on the outside of fluid nozzle tip or center hole or the nozzle orifice is partially clogged.

Loose fluid nozzle.

Remove obstruction or clean gun. Never use a wire or other hard implement for cleaning.

Tighten fluid nozzle.

CENTER OF PATTERN TOO NARROW



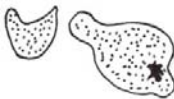
Atomization too high or air pressure to high.

Material (paint) too thin.

Reduce air pressure.

Regulate material viscosity.

PATTERN WIDTH NOT SHARP



Too low and atomization or air pressure.

Material (paint) too thick.

Increase air pressure.

Regulate material viscosity.

NO PAINT OUTPUT OR SPUTTERS ONLY A FEW DROPS RANDOMLY



Fluid passage clogged or dirty or air passages in gun are blocked up.

Fluid needle stroke too small.

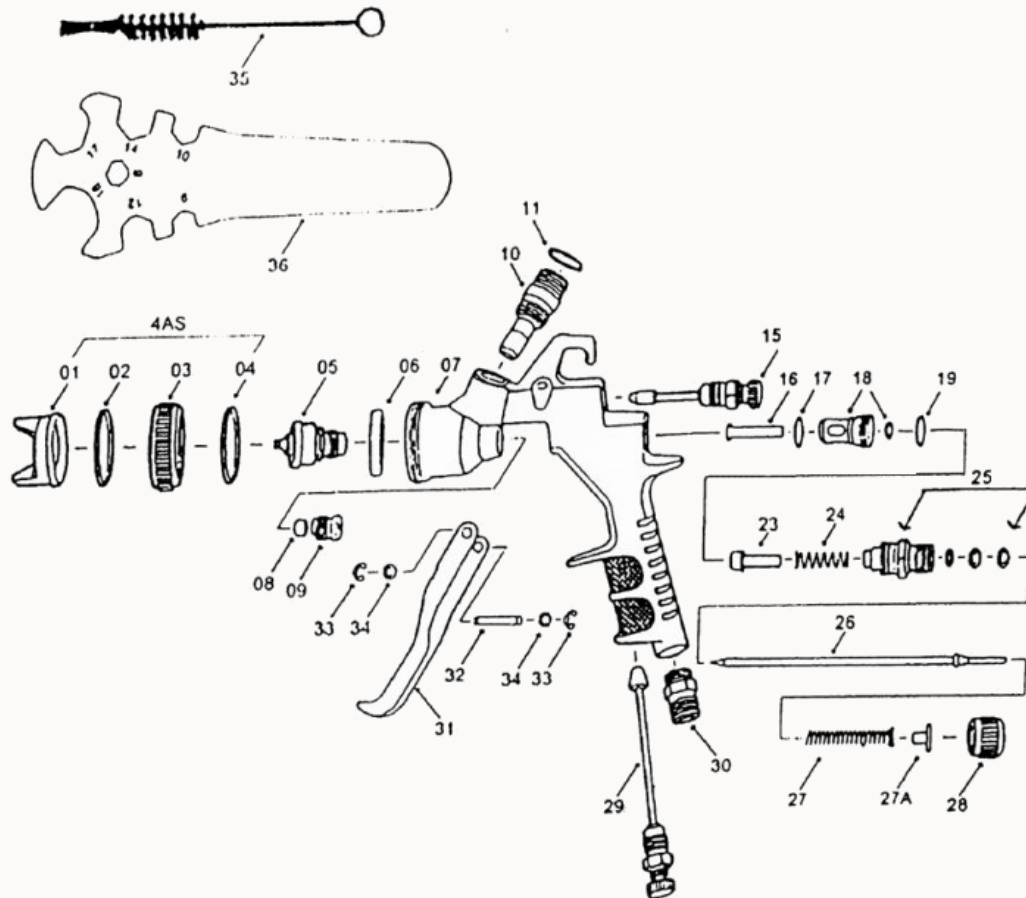
Fluid needle stroke too small.

Remove obstructions or clean gun.

Adjust fluid needle stroke

Adjust fluid needle stroke

ATD-16812



ITEM#	ORDERING PART#	PART DESCRIPTION
1	PRT16812-01	AIR CAP ASSY
2	PRT16812-01	AIR CAP ASSY
3	PRT16812-01	AIR CAP ASSY
4	PRT16812-01	AIR CAP ASSY
5	PRT16812-05	FLUID NOZZLE, 1.2 MM
6	PRT16812-06	ALUMINUM WASHER
7	PRT16812-07	GUN BODY
8	PRT16812-08	NEEDLE PACKING
9	PRT16812-09	NEEDLE PACKING NUT
10	PRT16812-10	FLUID NIPPLE
11	PRT16812-11	CUP WASHER
15	PRT16812-15	PATTERN ADJUSTMENT VALVE SET
16	PRT16812-16	AIR VALVE SHAFT
17	PRT16812-17	O-RING
18	PRT16812-18	BRASS AIR VALVE BODY
19	PRT16812-19	O-RING

ITEM#	ORDERING PART#	PART DESCRIPTION
23	PRT16812-23	AIR VALVE
24	PRT16812-24	SPRING FOR VALVE
25	PRT16812-25	FLUID NEEDLE GUIDE
26	PRT16812-26	FLUID NEEDLE SET
27	PRT16812-27	FLUID NEEDLE SPRING
27A	PRT16812-27A	SPRING WASHER
28	PRT16812-28	FLUID ADJUSTMENT KNOB
29	PRT16812-29	AIR ADJUSTMENT VALVE SET
30	PRT16812-30	AIR HOSE JOINT
31	PRT16812-31	TRIGGER
32	PRT16812-32	TRIGGER PIN
33	PRT16812-33	LOCKING RING
34	PRT16812-34	TRIGGER WASHER
35	PRT16812-35	BRUSH
36	PRT16812-36	SPANNER
N/S	PRT16812-RK	ALL SEALS AND SPRINGS